

A large spool of orange fiber optic cable is the central focus, mounted on a metal frame with a single wheel. It sits on a paved street. In the background, a town clock tower with a red dome and an American flag is visible among trees. Several cars are parked or driving on the street. In the foreground, orange and white traffic cones and a striped barrier are set up. A white rectangular box with the text "BROADBAND POLICY" is overlaid on the image.

# *BROADBAND POLICY*

# I-Net Update

## Dig Once Policy

*BROADBAND POLICY*

# I-Net Strategy

The Santa Cruz Fiber logo, featuring the words "SANTA CRUZ" in white, sans-serif, all-caps font above the word "FIBER" in a large, orange, stylized, all-caps font. The background is a dark blue map of Santa Cruz.

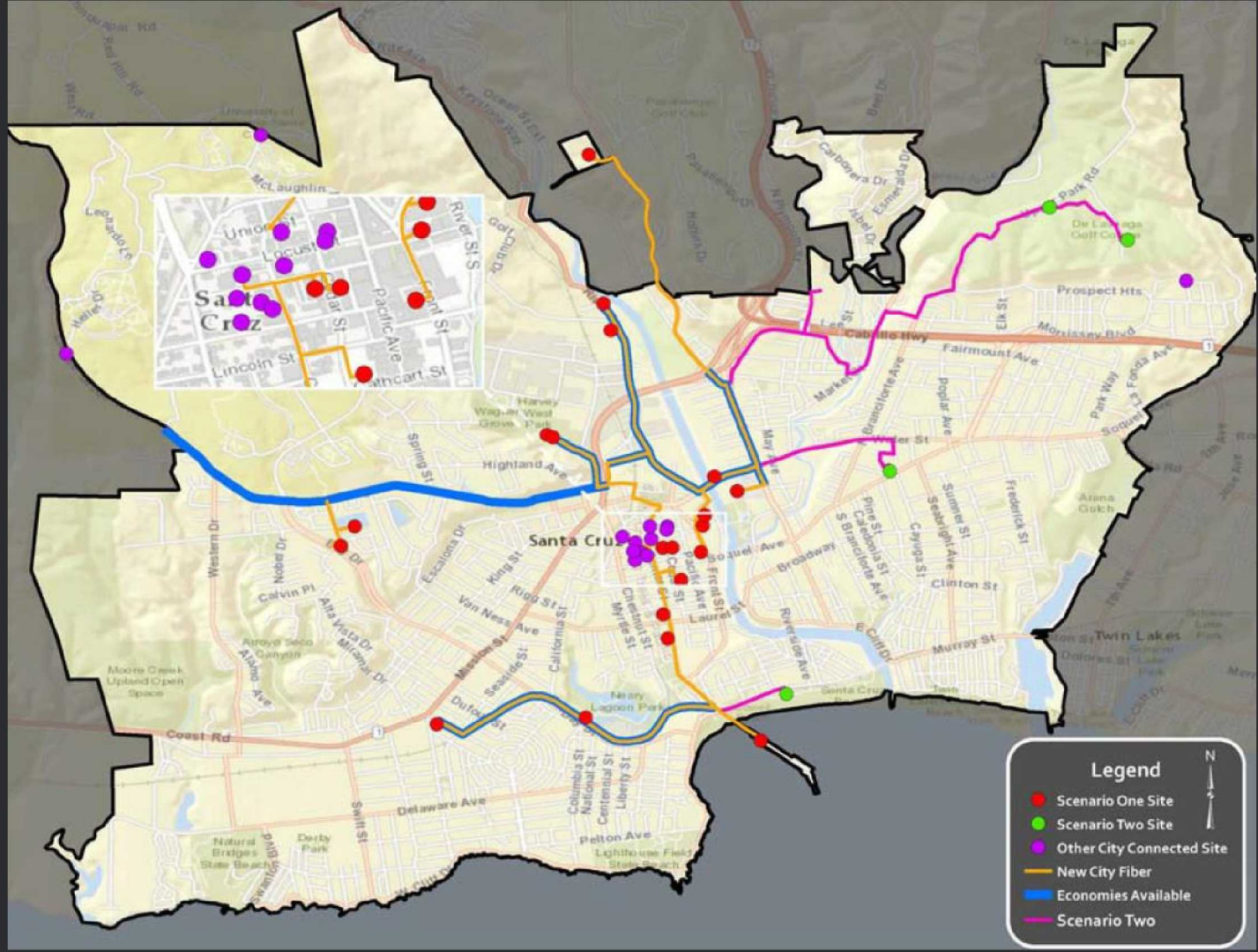
SANTA CRUZ  
**FIBER**

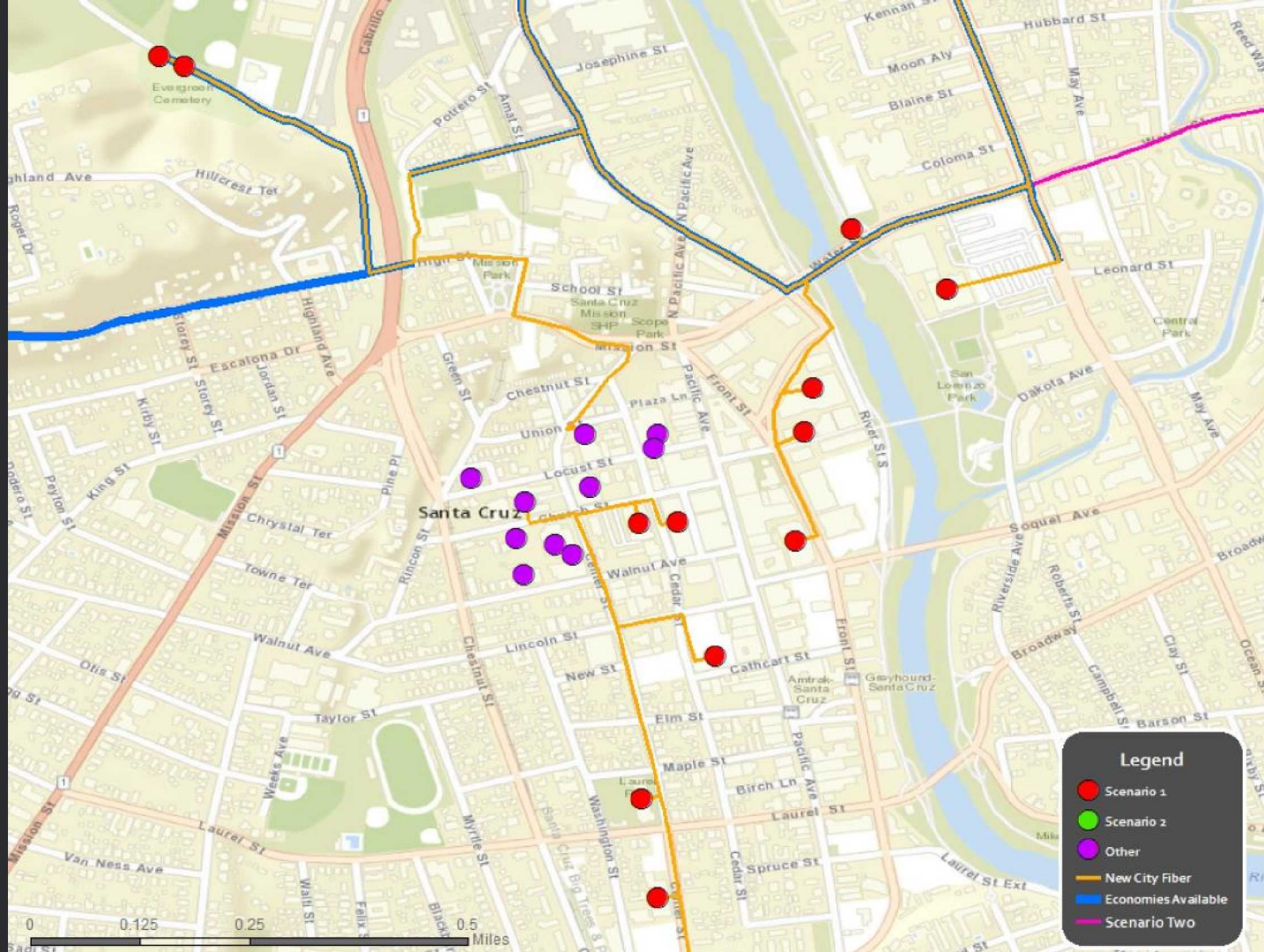
*BROADBAND POLICY*

# I-Net Strategy

- Better security, speed, and scalability
- Future-proof for speed upgrades
- Additional conduit and dark fiber available to lease
- Saves on long-term costs
- Attractive for future investment

*BROADBAND POLICY*





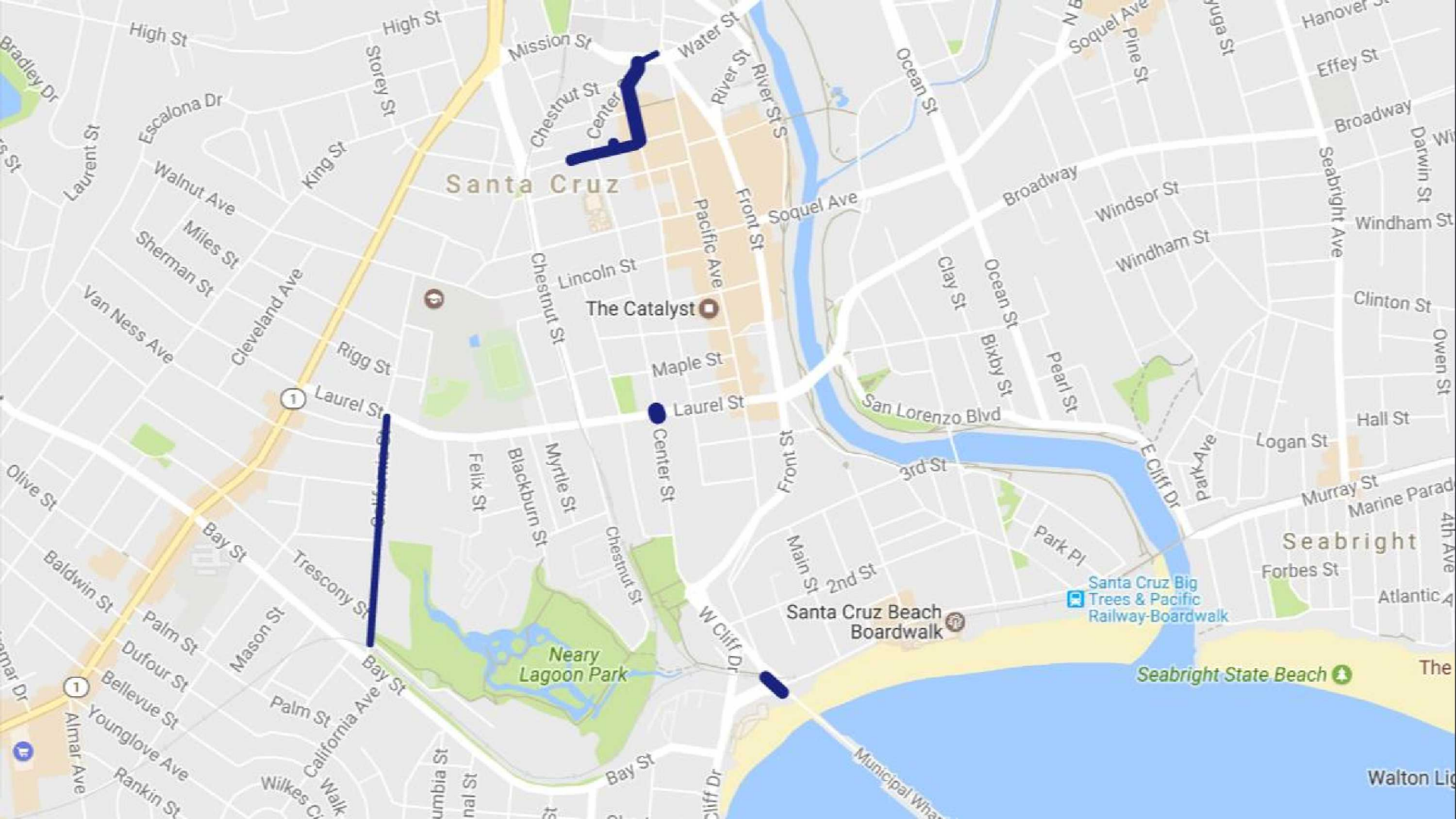
# I-Net Strategy

- 12.6 miles of fiber
- 27 City sites
- Estimated \$2.2 Million
- Cash flow positive by Year 3
- Under staff review and project transition underway

*BROADBAND POLICY*

A construction worker wearing a high-visibility orange and yellow safety vest and a white hard hat is seated on a large, dark-colored drilling rig. The rig is positioned on a concrete sidewalk, and a large, dark, cylindrical drill bit is visible extending from the machine into the ground. In the foreground, a large pile of excavated material, including dark soil and light-colored gravel, is visible. To the left of the pile, there is a large, dark, conical object, possibly a piece of equipment or a pile of debris. In the background, there are green bushes and a clear blue sky. A white truck is partially visible on the right side of the image. The text "DIG ONCE POLICY" is overlaid in the center of the image.

*DIG ONCE POLICY*



# Pavement Life Span Policy

- Works best with large-scale projects & ample time to notify
- Administrative approval
- Map and label conduit and equipment in the public right-of-way
- 4G/5G small cell installations still rely upon fiber optic pathways

*BROADBAND POLICY*

# Recommendations

- Motion to accept I-Net Strategy update
- Resolution to approve Trenching in City Rights of Way:  
Pavement Life Span Preservation City Council Policy 28.2

*BROADBAND POLICY*