

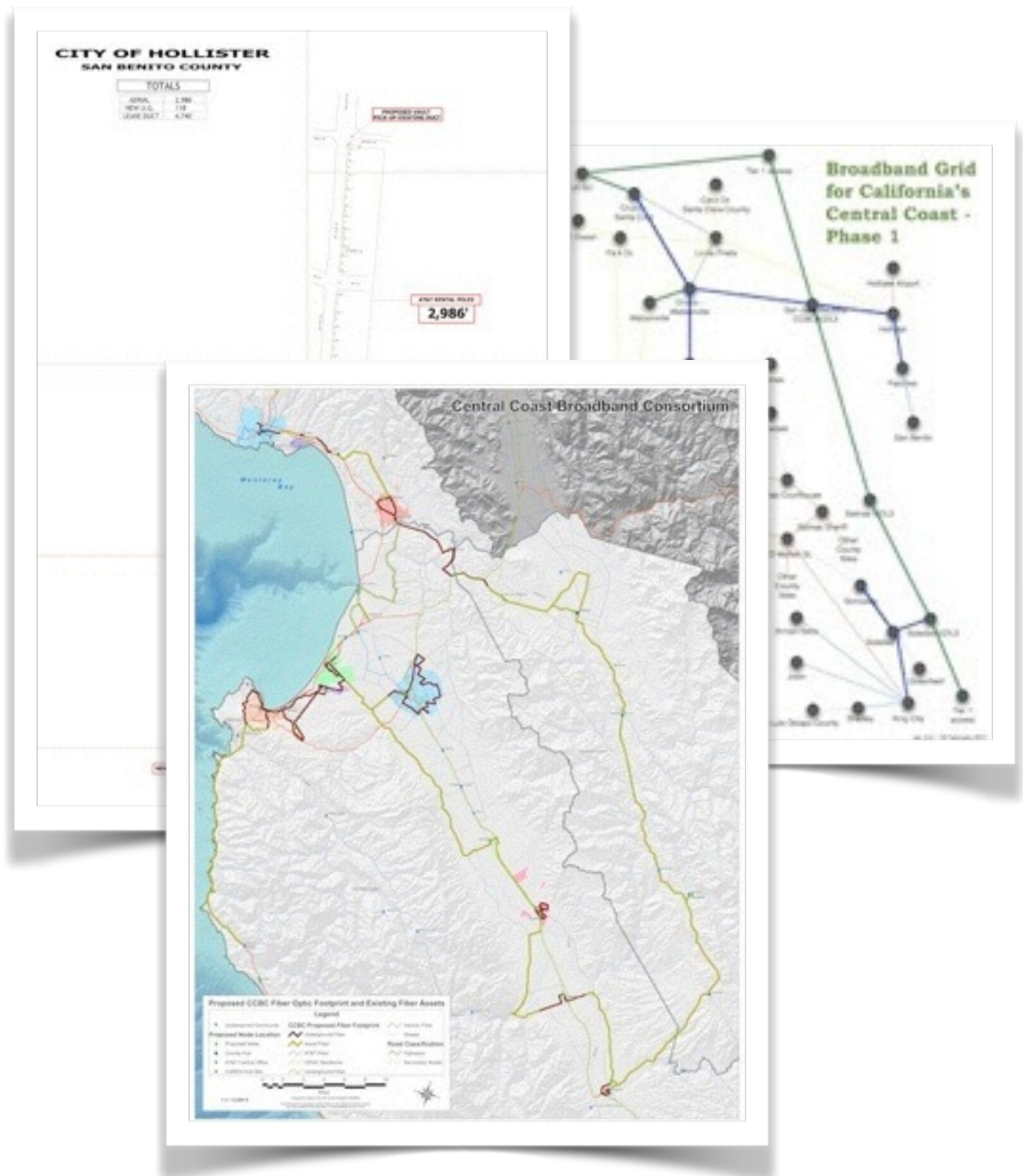


Central Coast
Broadband Consortium

City of Marina
Economic Development Commission

Central Coast Broadband Consortium 3 year project

- Priority is infrastructure and economic development.
- Funded by CPUC.
- Assist with grant applications.
- Broadband asset inventory.
- Model policy development.
- Continuing vision and roadmap for broadband development.



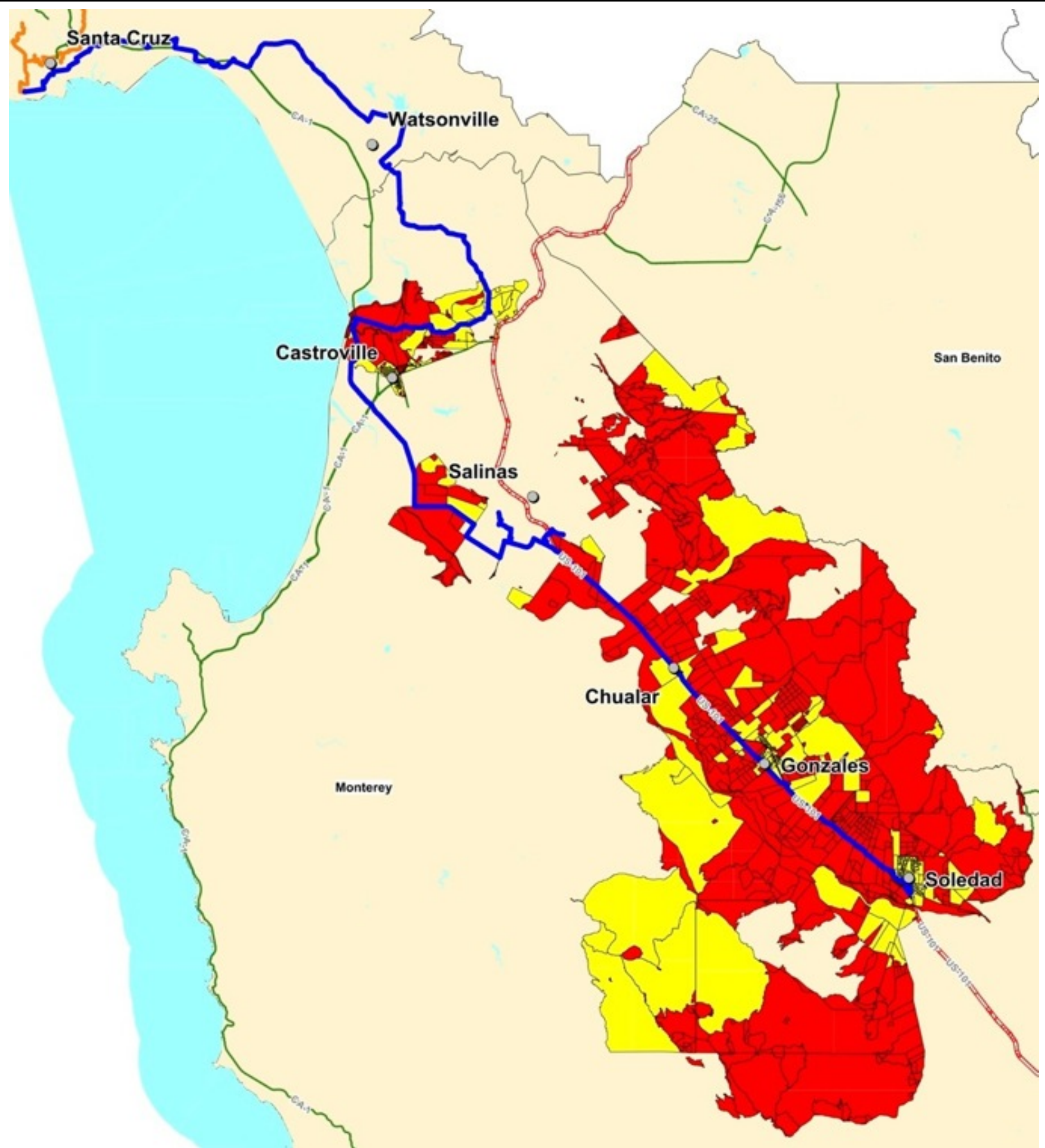
Santa Cruz County adopting broadband policy

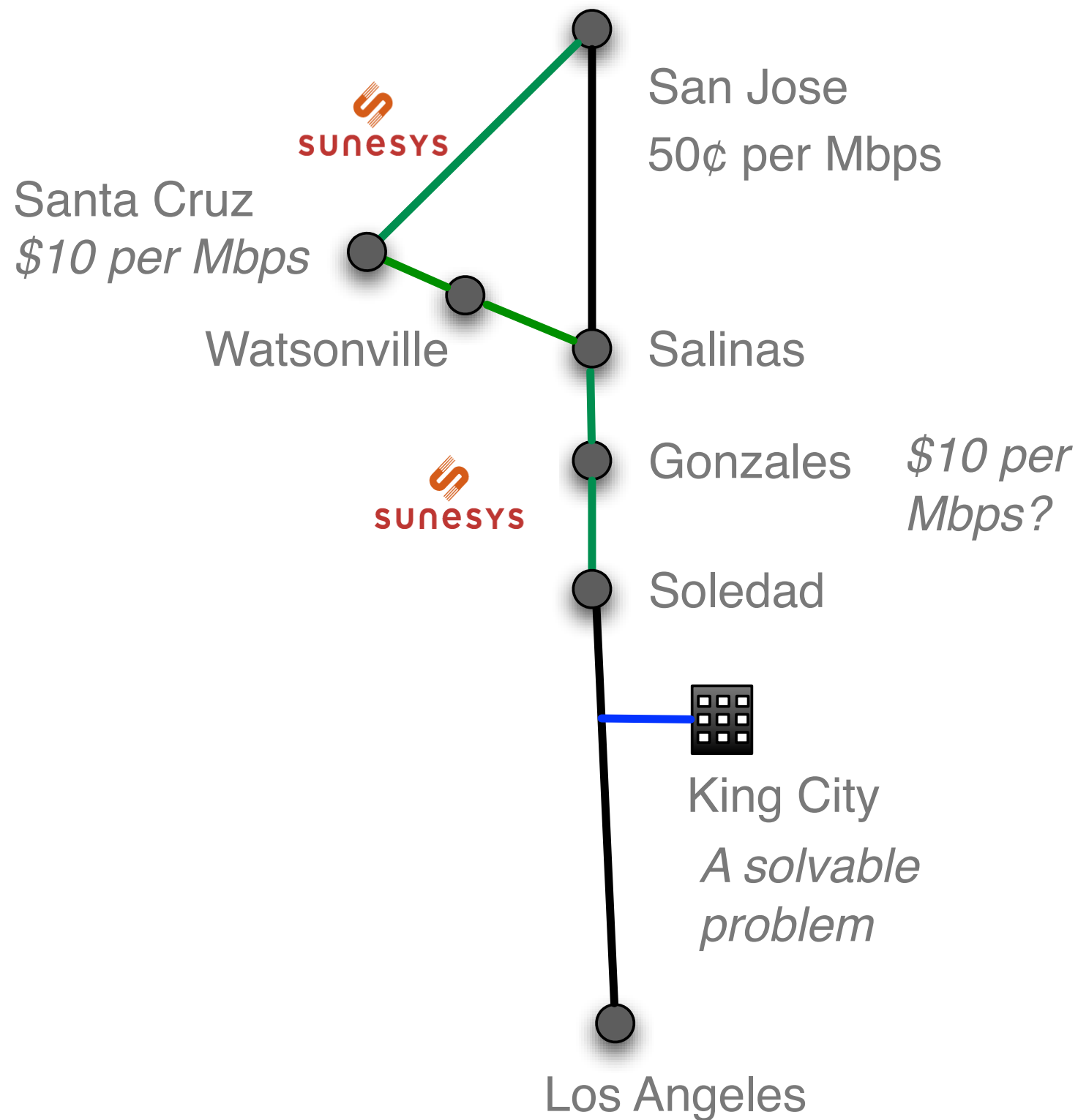
- Moving responsibility to Public Works.
- Broadband infrastructure subject only to encroachment process, like other utilities
- \$25,000 permits drop to \$200 via 2-week, over-the-counter process.
- “Dig once”, infrastructure standards, shadow conduit.
- Model policy bank & presentation provided



Sunesys-led middle mile project approved

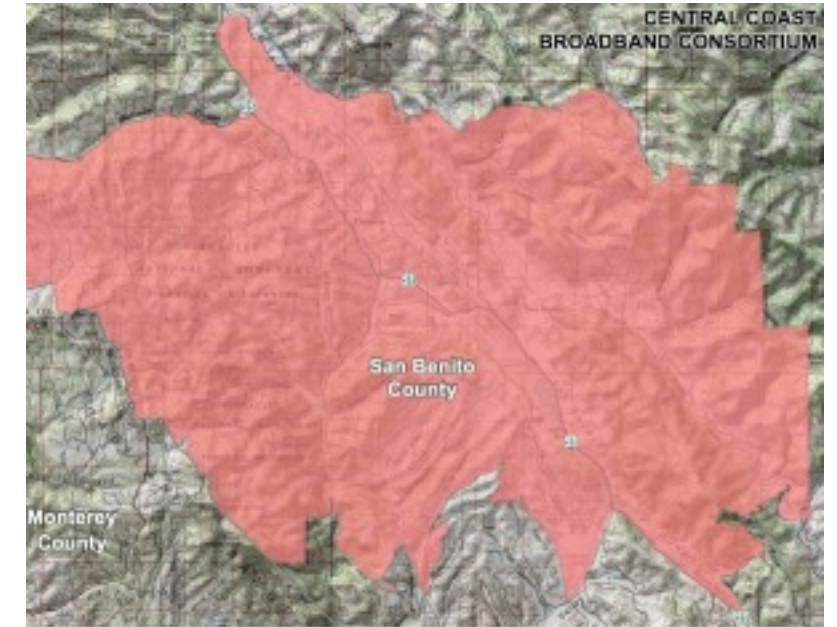
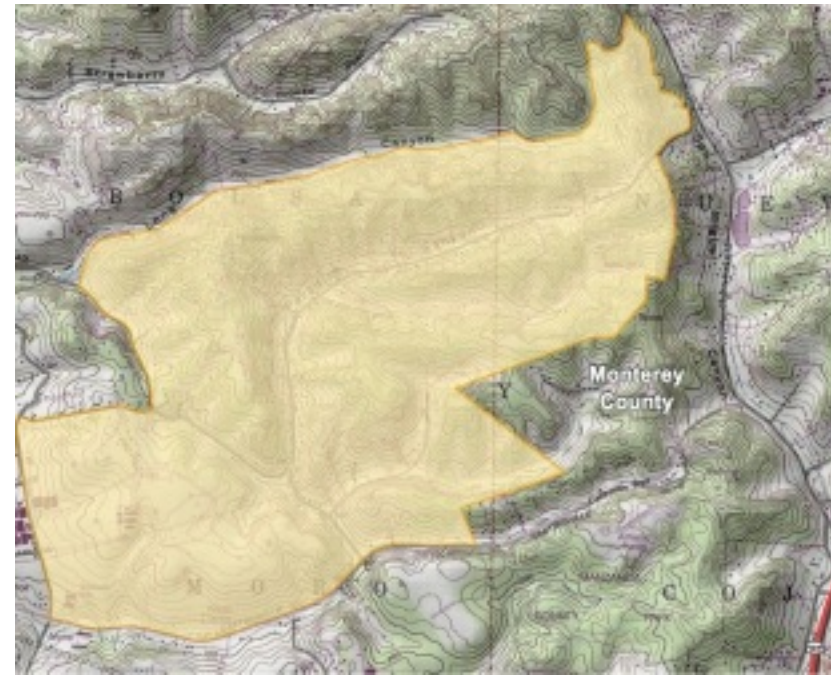
Industrial grade 91-
mile fiber route:
Santa Cruz -
Watsonville -
Castroville - Salinas -
Chualar - Gonzales -
Soledad
Funded by \$10.6
million CPUC grant





Accessible middle mile
fiber lowers costs

Otherwise, you could be paying
\$135 per megabit



Six last mile projects for
three counties

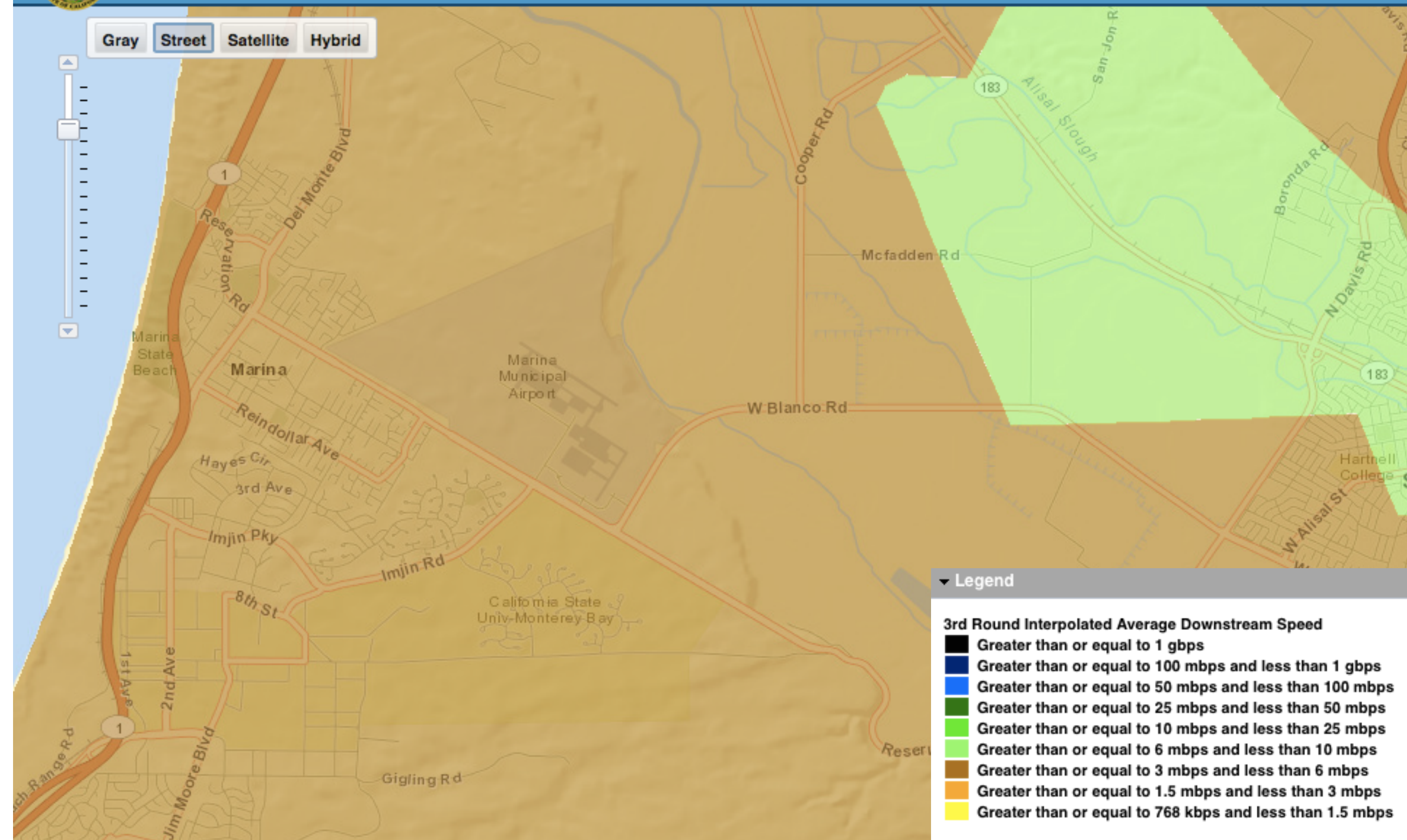
Redshift in Chualar, Surfnet in
Santa Cruz & Monterey,
Pinnacles Telephone in San
Benito, Etheric region-wide



California Broadband Availability

Data as of: 6/30/13

Gray Street Satellite Hybrid



Legend

3rd Round Interpolated Average Downstream Speed

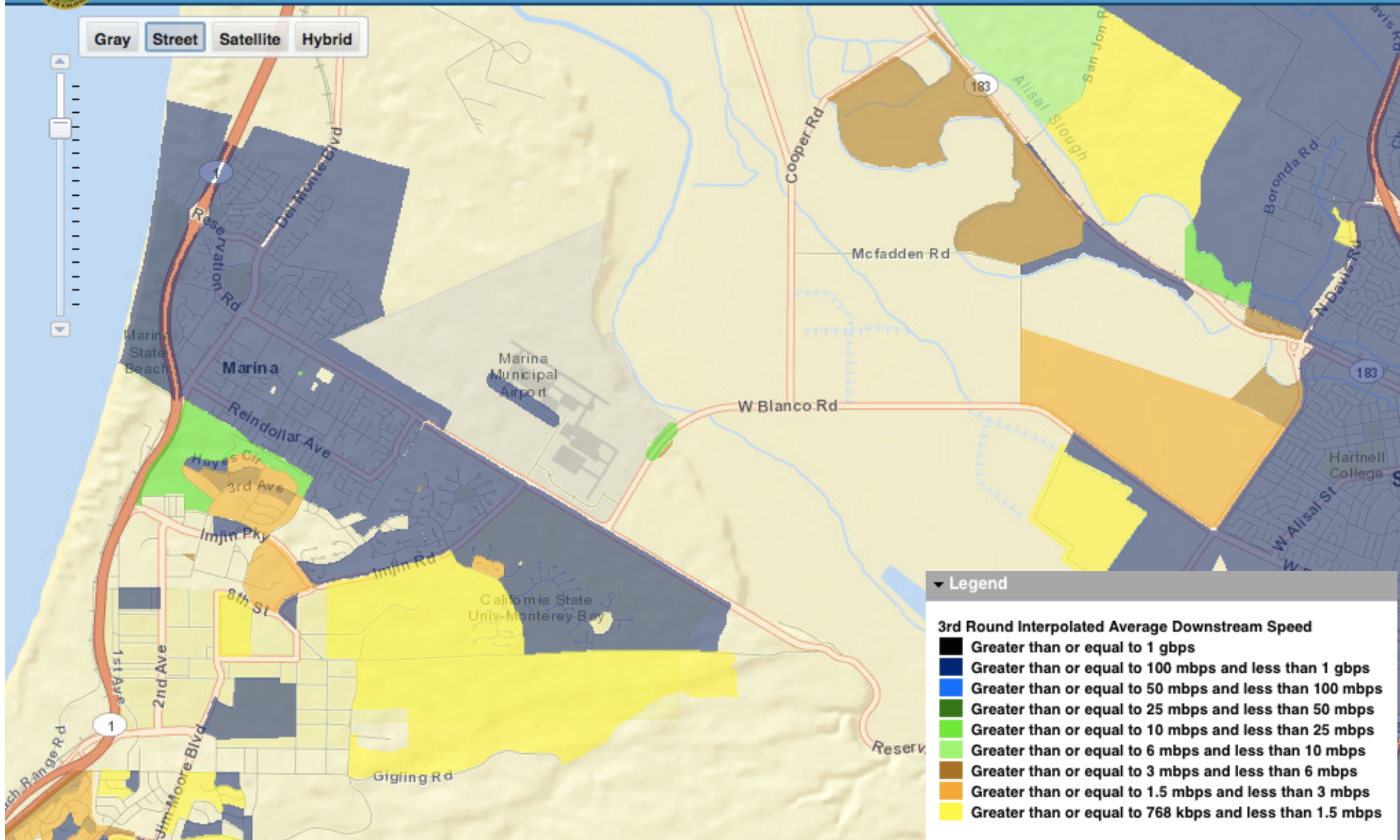
- Greater than or equal to 1 gbps
- Greater than or equal to 100 mbps and less than 1 gbps
- Greater than or equal to 50 mbps and less than 100 mbps
- Greater than or equal to 25 mbps and less than 50 mbps
- Greater than or equal to 10 mbps and less than 25 mbps
- Greater than or equal to 6 mbps and less than 10 mbps
- Greater than or equal to 3 mbps and less than 6 mbps
- Greater than or equal to 1.5 mbps and less than 3 mbps
- Greater than or equal to 768 kbps and less than 1.5 mbps



California Broadband Availability

Data as of: 6/30/13

Gray Street Satellite Hybrid

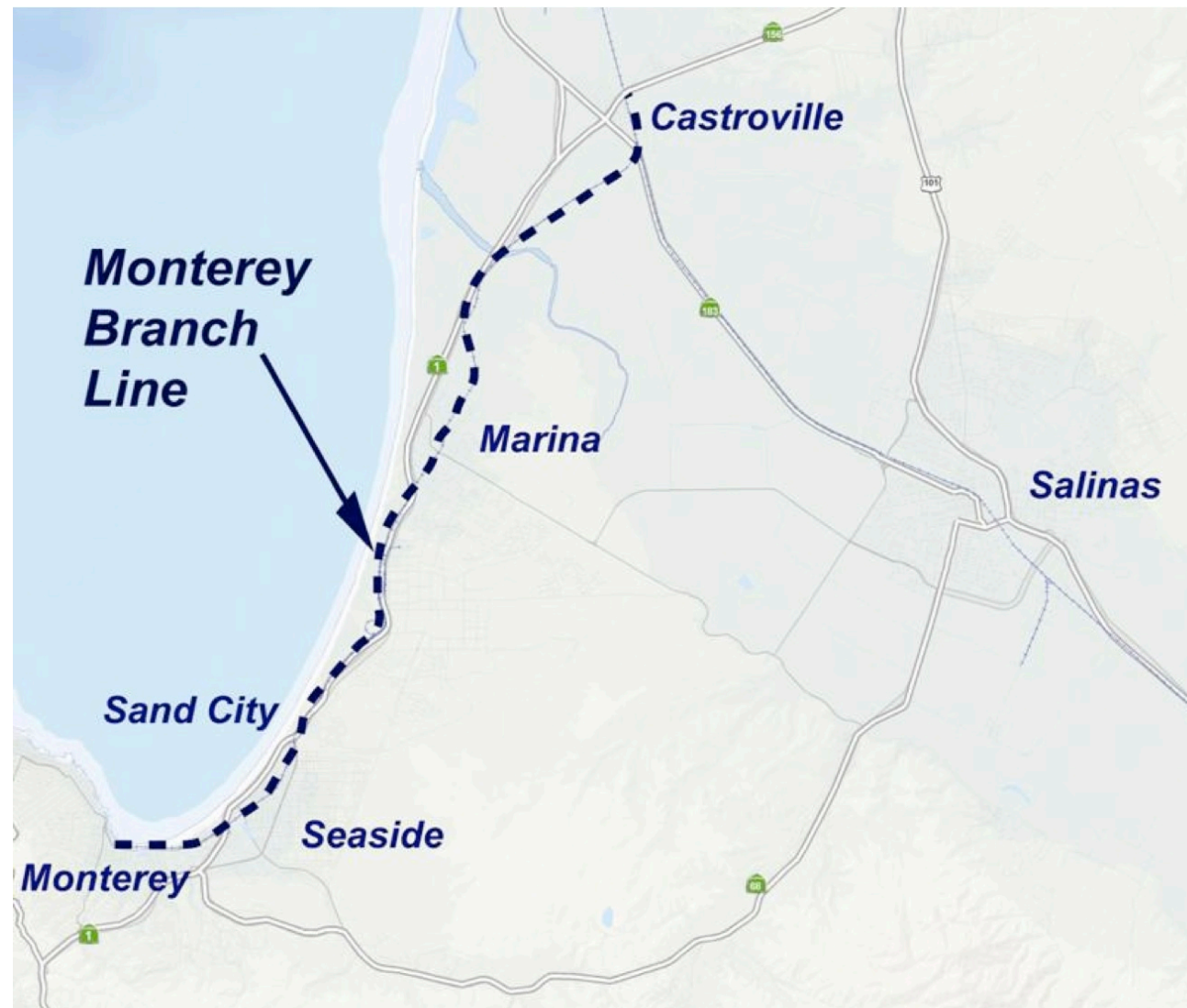


- New home construction frequently includes full fiber connections.
- Incumbent service providers can still control access.
- Loma Linda has policy for new and major remodel construction.
 - Physical connection to open city network.
 - Service from city optional
 - Structured inside wiring required
- AT&T is backing away from regulated copper service.



East Garrison has fiber
to the home

But service is limited to what
Comcast and AT&T offer



TAMC light rail project

Can install fiber/conduit
Problematic CASF grant funding

- Expressions of interest, including City of Marina, submitted in March.
 - Puts a marker down, no obligation, no particular advantage.
- Level of funding undetermined.
- Definition of “rural” unknown.
- Participation of a certified telephone company is required.
 - Cities and others may partner with eligible telcos
- Other broadband funding sources include CPUC, EDA, RUS



FCC funding rural
broadband experiments

Logical expressions of interest

Questions

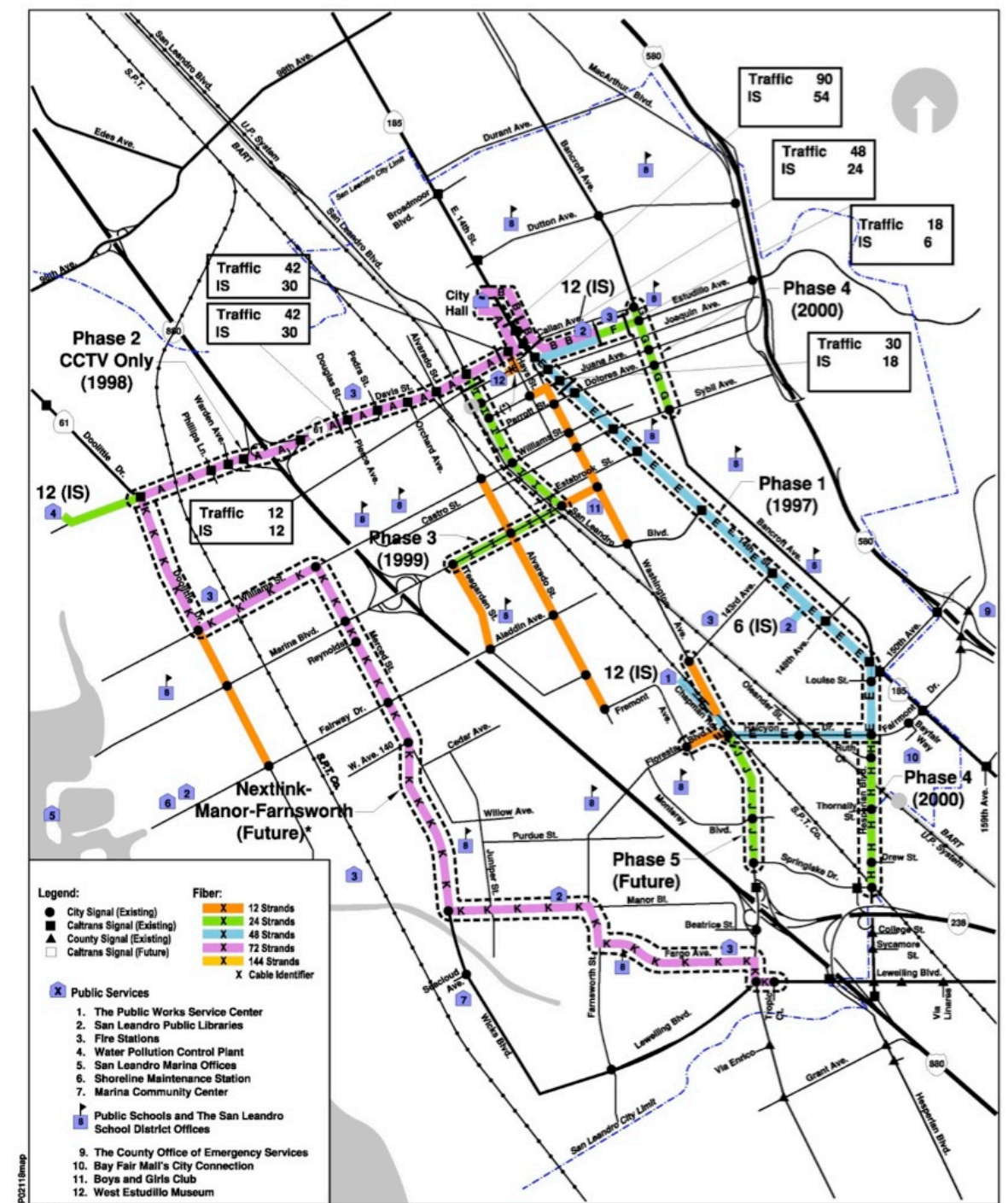
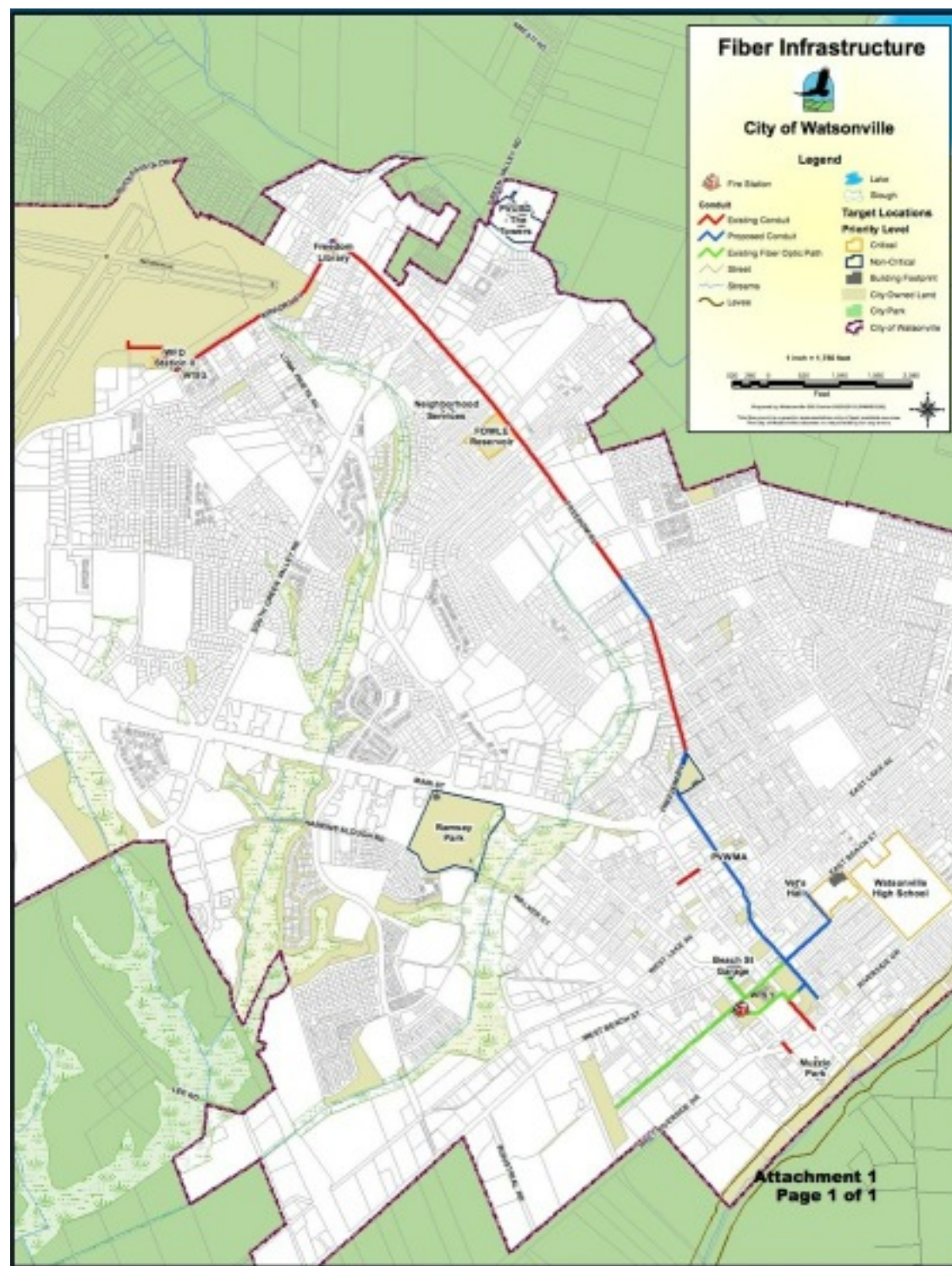


Central Coast
Broadband Consortium

Back-up Slides



Central Coast
Broadband Consortium



Mapping leads to muni
broadband projects

Watsonville replacing Charter
fiber

CCBC priority areas

Monterey County

1. Greenfield
2. King City
3. Gonzales

Regional Wild Cards

1. Soledad
2. Castroville
3. Chualar

Santa Cruz County

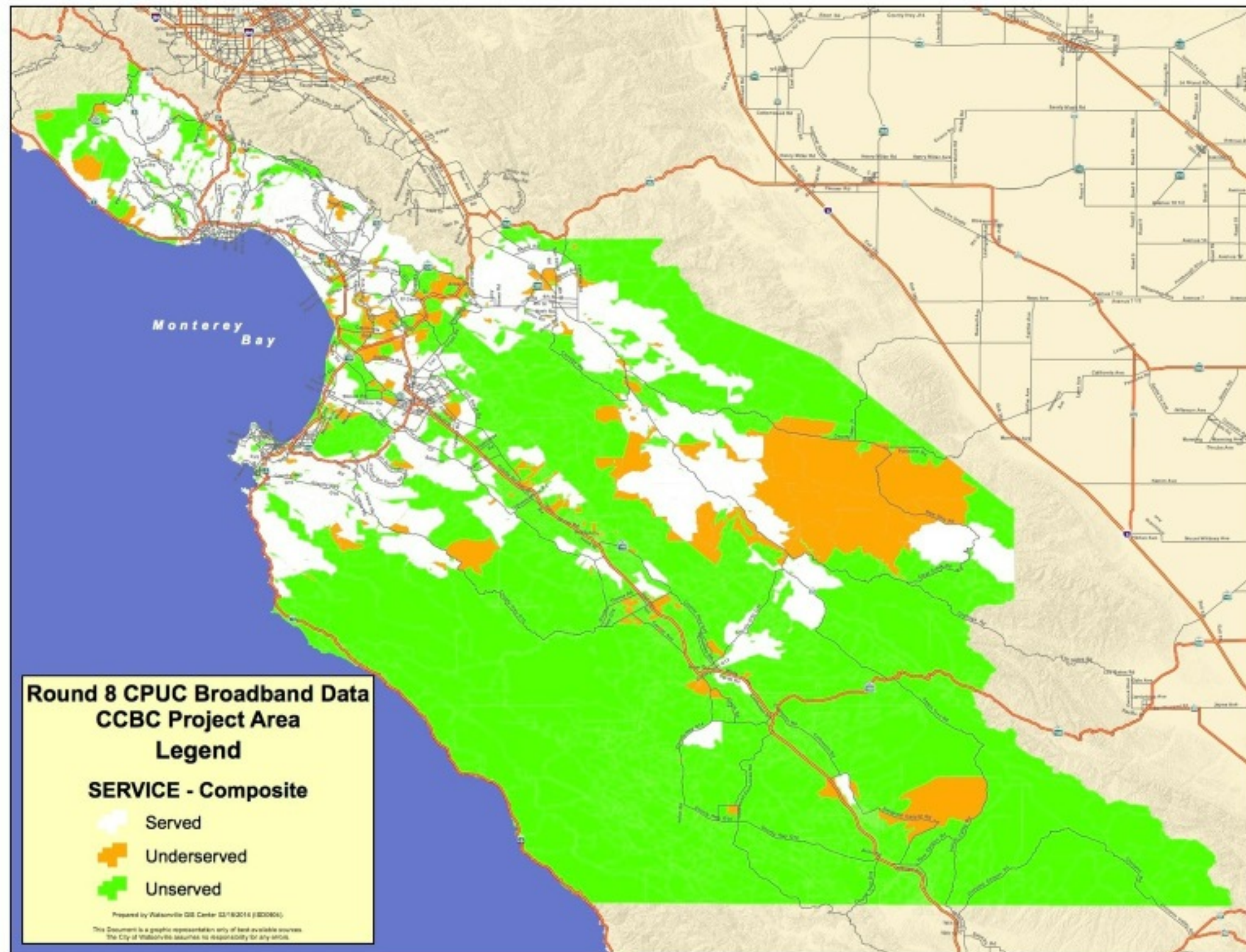
1. Pleasure Point/Twin Lakes
2. Soquel
3. Brookdale

San Benito County

1. Aromas area
2. Airport/Northeast area
3. Cienega Road area

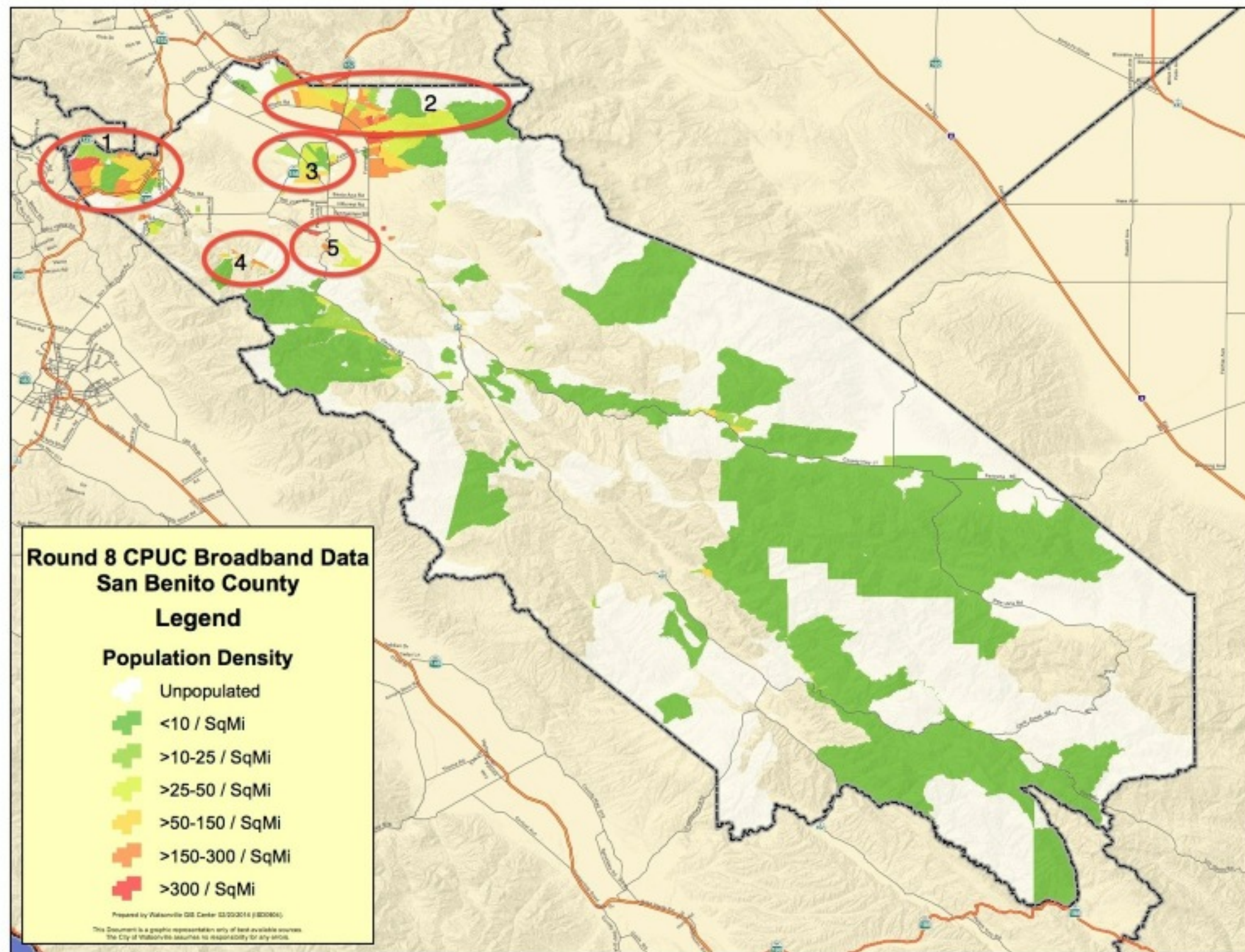
Methodology & results
presented to CPUC

Next step is CPUC
consolidation/standardisation of
consortia rankings



City/CBD analysis captured
Monterey, Santa Cruz

Unattached census blocks have
few people, poor business
potential



Cluster analysis identified
San Benito priority areas

Will run for Monterey, Santa Cruz
as a check

Analysis based on...

1. CASF eligibility

2. Social/economic impact and feasibility

- Number of people
- Eligible percentage of community
- Population density
- Anchor institutions
- Median income

CPUC and census data only

Lower household income ranked
higher