

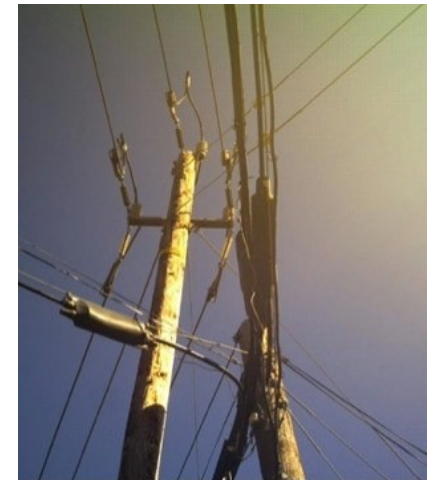
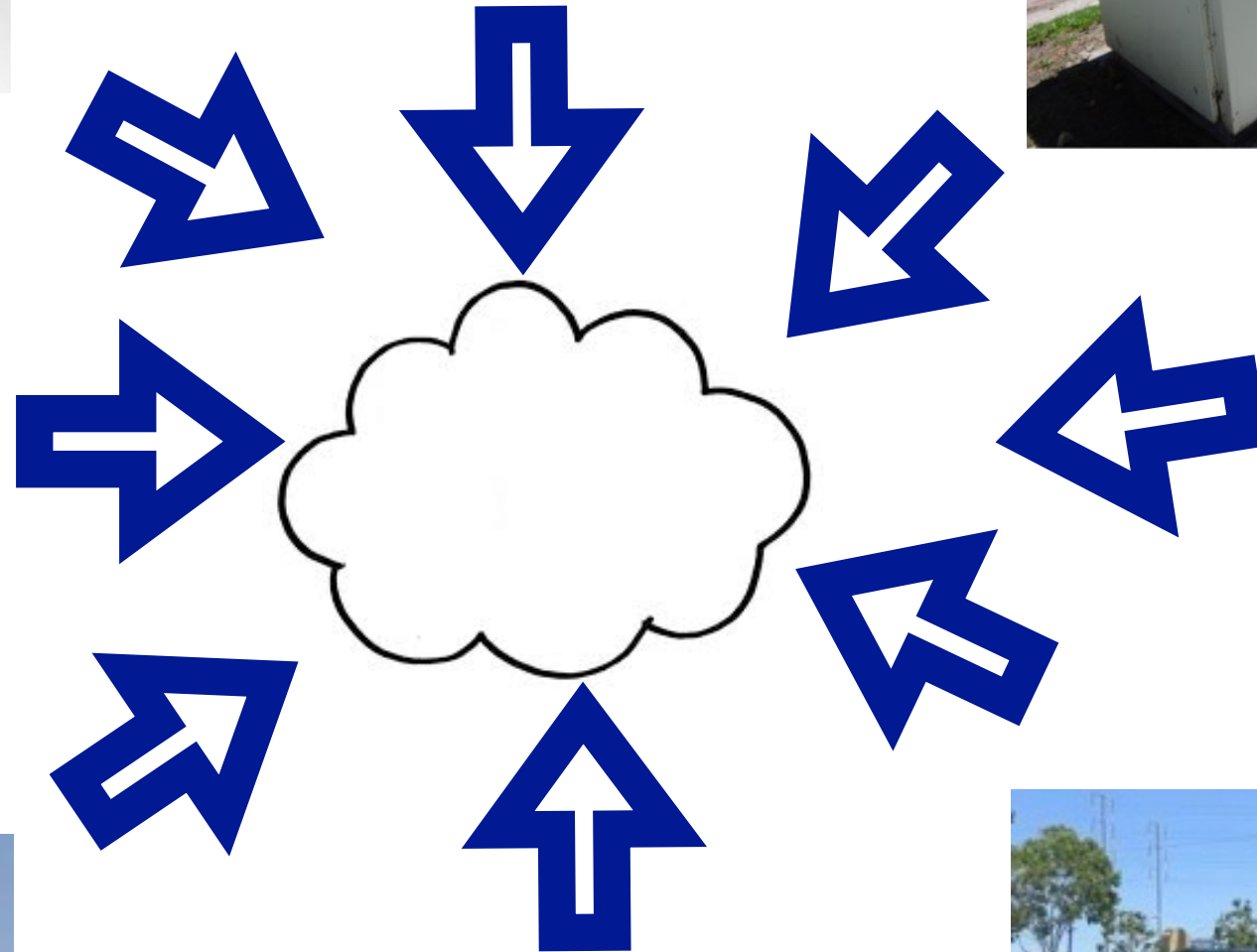
# Connected Cities: planning for fiber, broadband and WiFi

6 October 2015

American Planning Association California Chapter conference

---





Broadband is digging & rigging

It's not rocket science





Dig once, open trench, shadow conduit policies in Sonoma, Brentwood, Salinas



Gigabit muni residential fiber in Santa Cruz, Chattanooga; commercial fiber in San Leandro. Palo Alto, Santa Monica



Master permits, master leases, minimal process delays.



Maps unlock assets

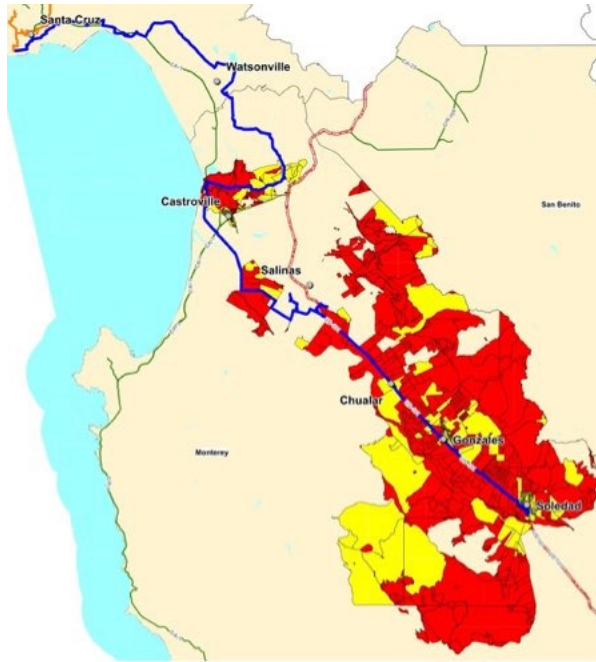


Conflict, spiffs and nimbys drive away investment

# Local policy & projects drive broadband infrastructure

Capital is scarce, policy barriers can stop projects cold





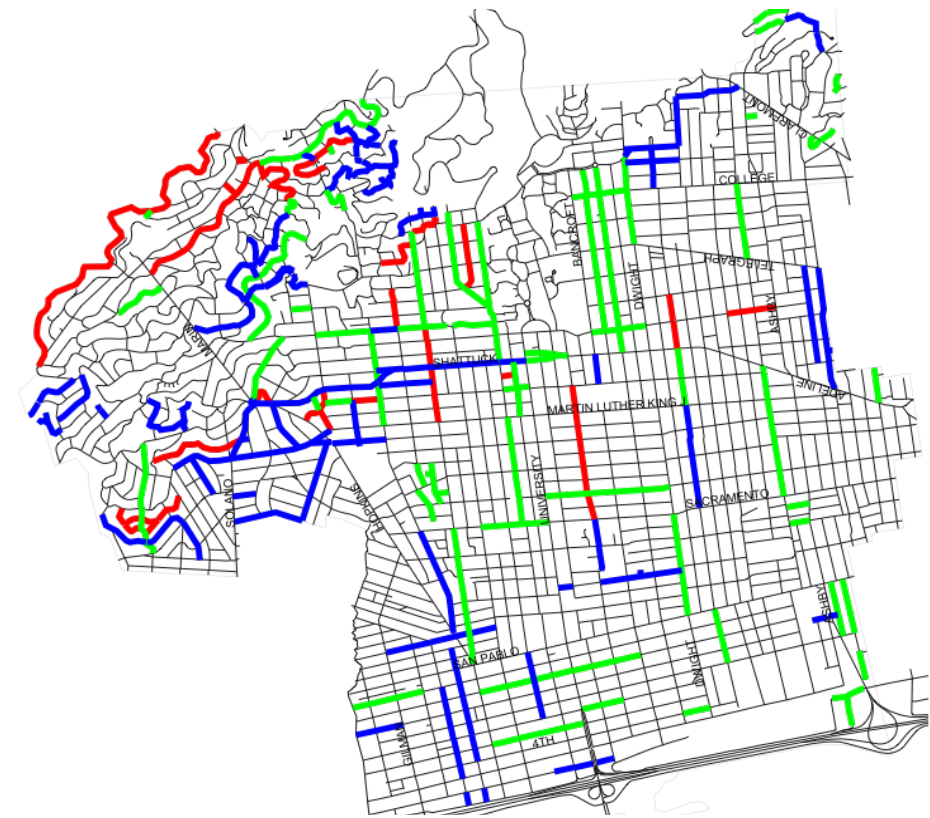
California Advanced Services Fund



Economic Development Administration



Operating subsidies: E-rate, telehealth, public safety, development fees, CAF, agency IT budgets



Transportation projects



U.S. Department of Agriculture

Funding projects requires creativity

Broadband-specific sources are rare and problematic



Contact:  
Steve Blum  
Tellus Venture Associates  
+1-831-582-0700  
[steveblum@tellusventure.com](mailto:steveblum@tellusventure.com)  
[www.tellusventure.com](http://www.tellusventure.com)