



Central Coast Broadband Consortium

Salinas Valley AgTech Infrastructure

17 November 2016

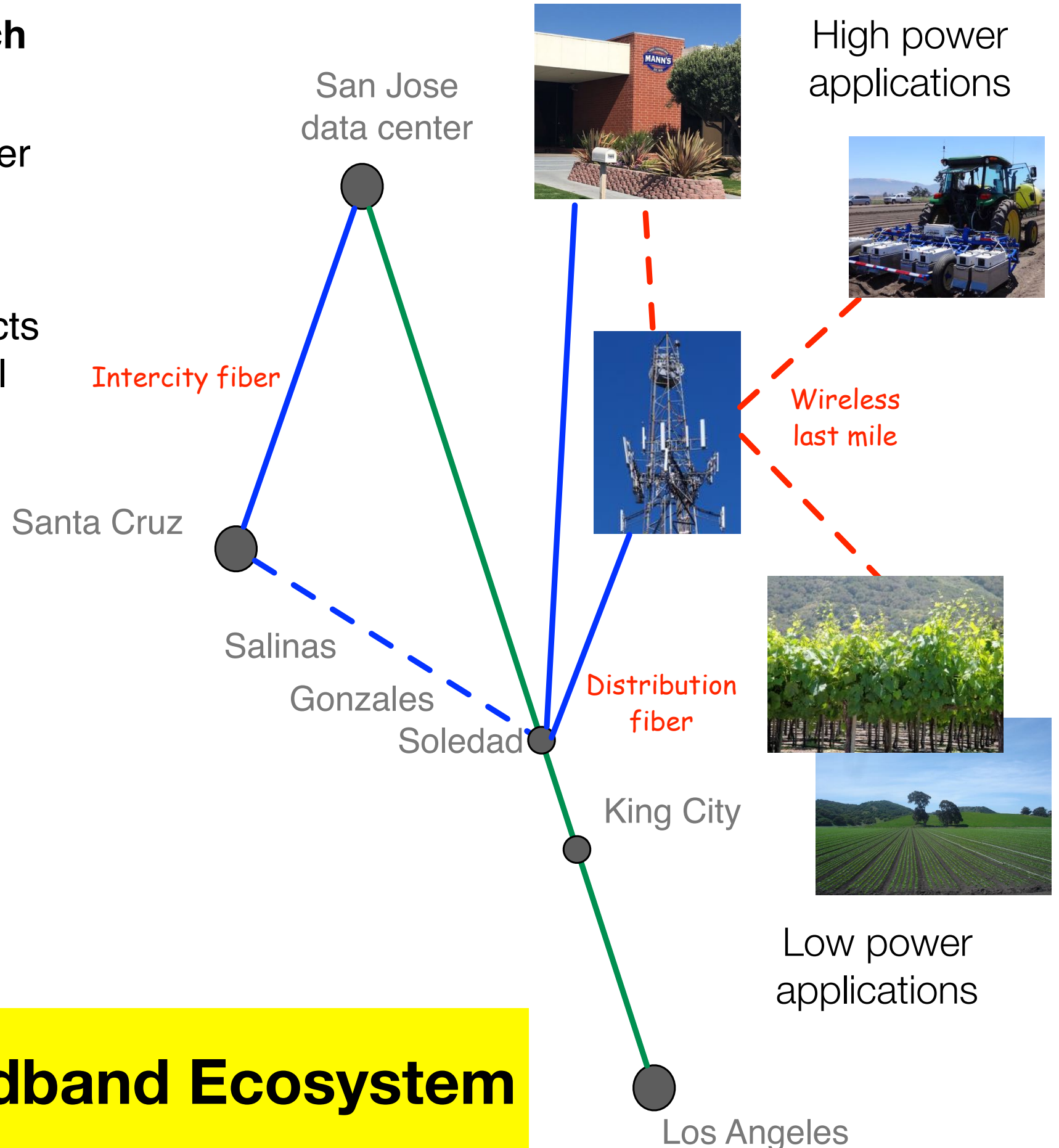


Tellus Venture
Associates

Steve Blum
President

Three links in the AgTech broadband chain

- Middle mile, intercity fiber connects to the core of the Internet.
- Distribution fiber connects major users to long haul nodes.
- Last mile wireless connects to people, vehicles and devices in the field.
- Two kinds of last mile wireless:
 - High power
 - Low power



AgTech Broadband Ecosystem

Salinas Valley middle mile connectivity growing

- Plenty of fiber along Union Pacific tracks, but difficult to access.
- Sunesys open access fiber from Santa Cruz to Soledad online in March.
- Next phase is Soledad to SLO.

**Wireline
Grades**

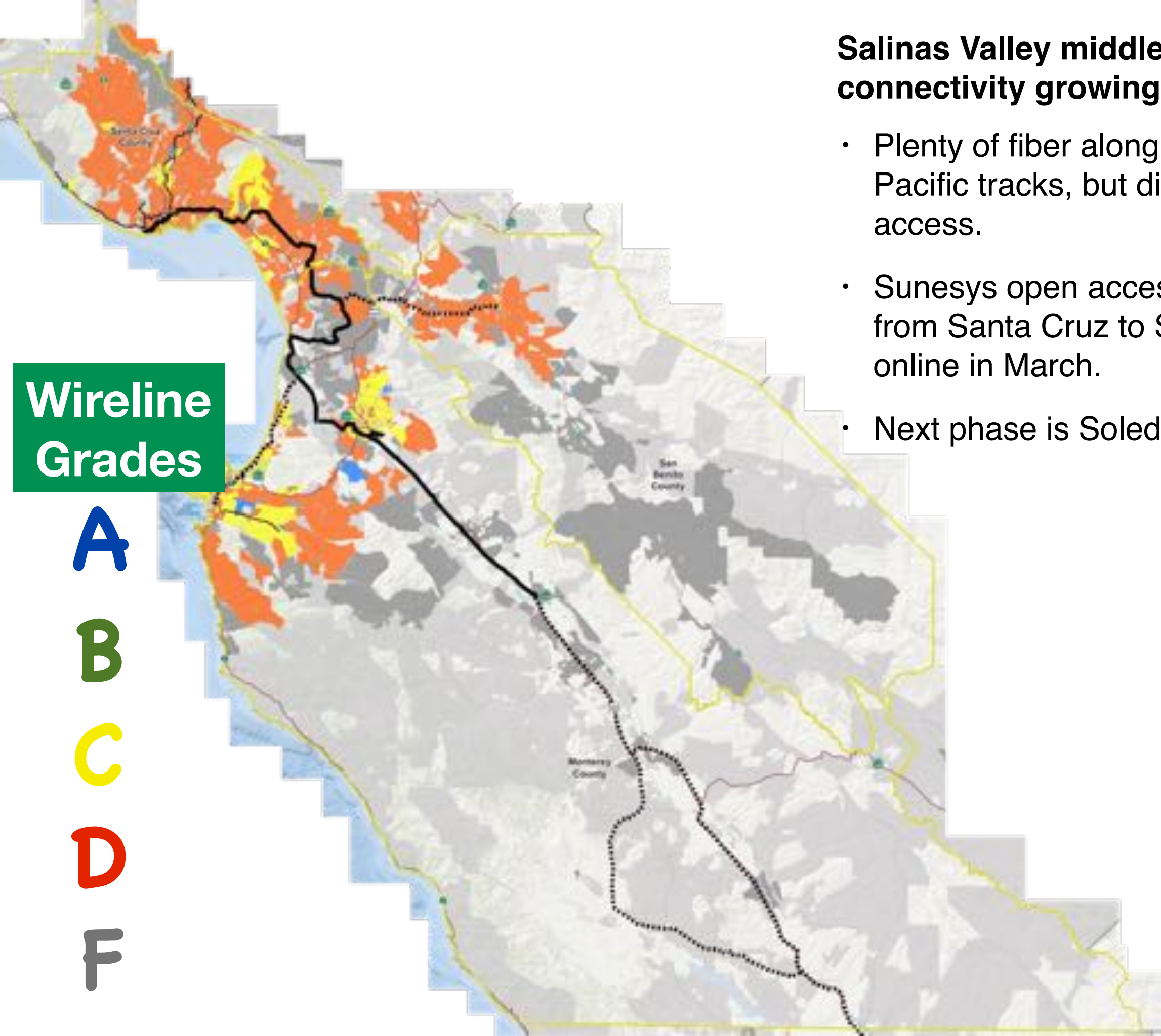
A

B

C

D

F



Distribution is problematic

- Not much fiber off main routes.
 - Cell tower companies, major ag operations, cities building some fiber & access points.
- Copper wireline infrastructure is substandard.
- Point to point wireless bridges gaps but has limited capacity.

**Wireline
Grades**

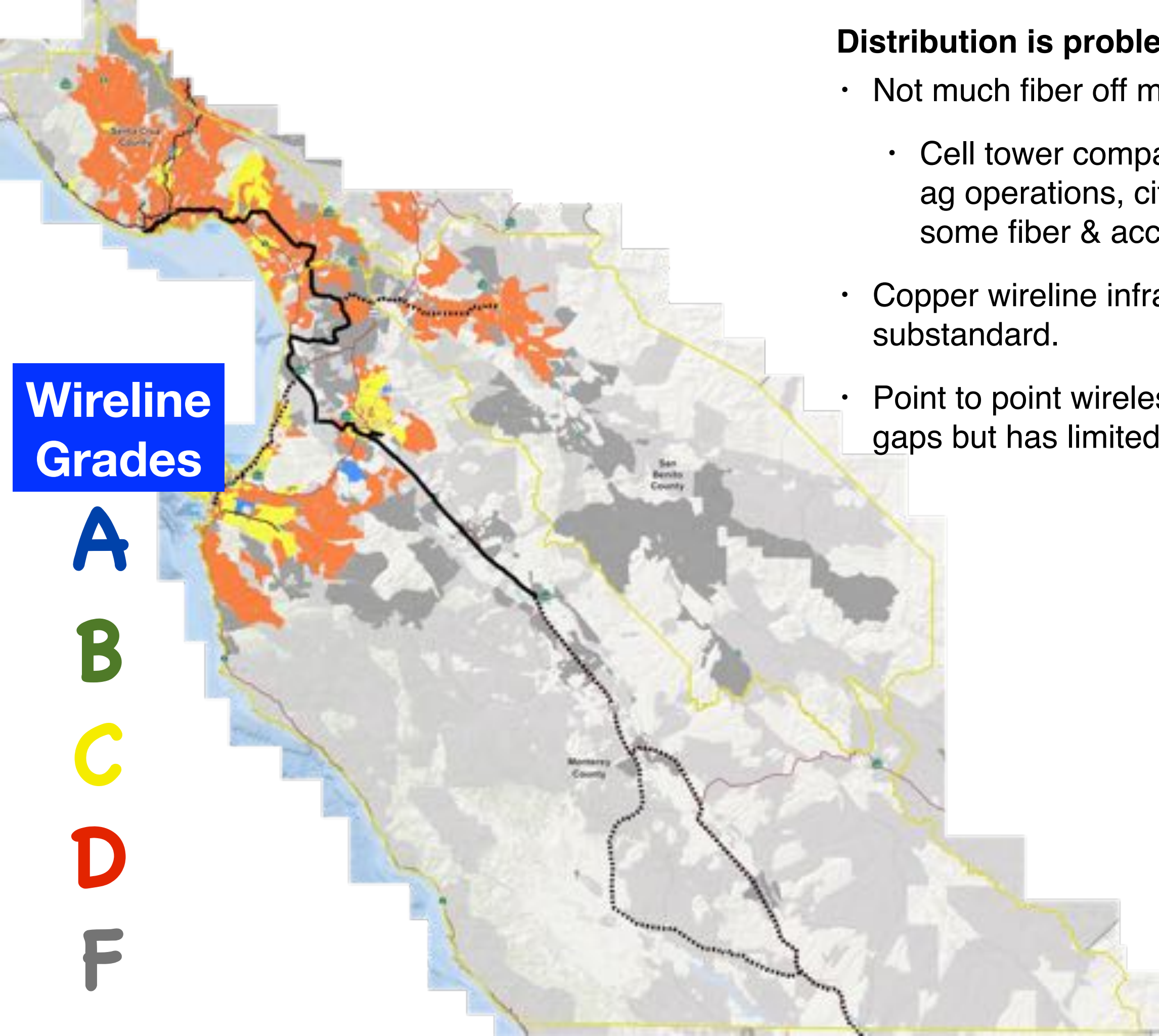
A

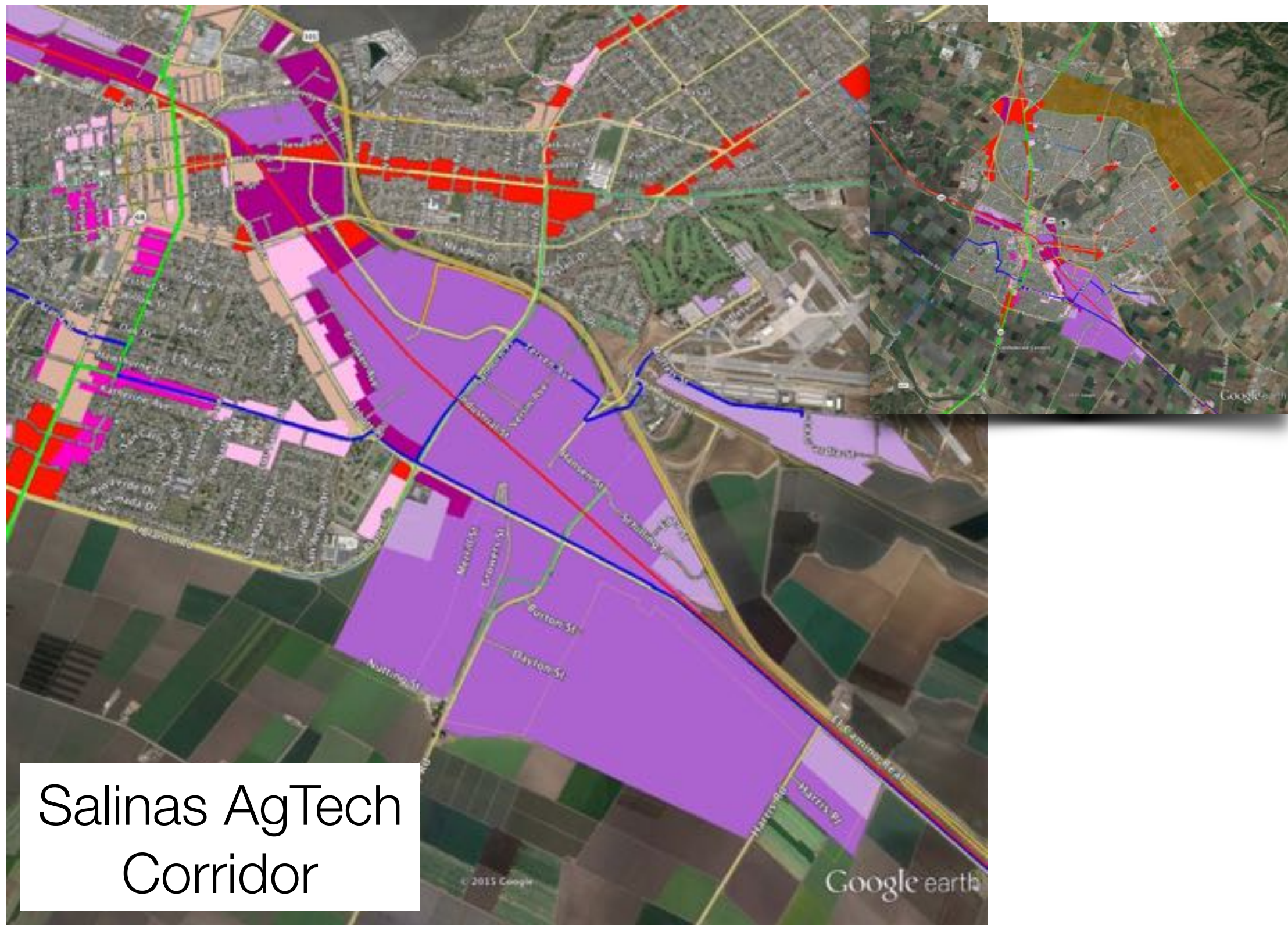
B

C

D

F



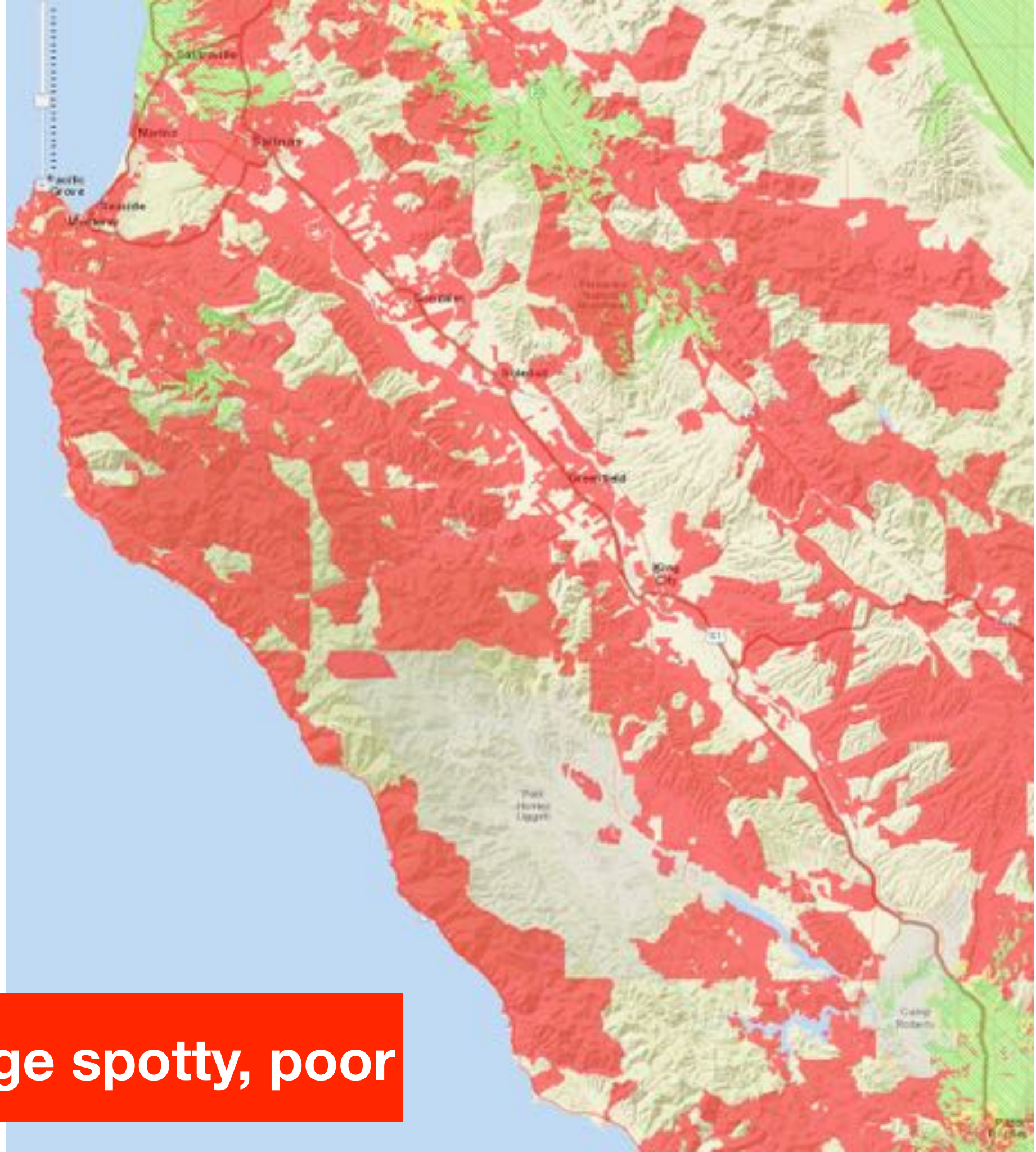


One solution: build on top of fiber routes

Fixed wireless is ad hoc

- CPUC rates Salinas Valley as "unserved" by fixed wireless.
- A few local operators provide limited service.
- Generally low speed, by commercial/industrial standards.
- Not "carrier class".

Wireless coverage spotty, poor



Claimed Cell Company Coverage

AT&T



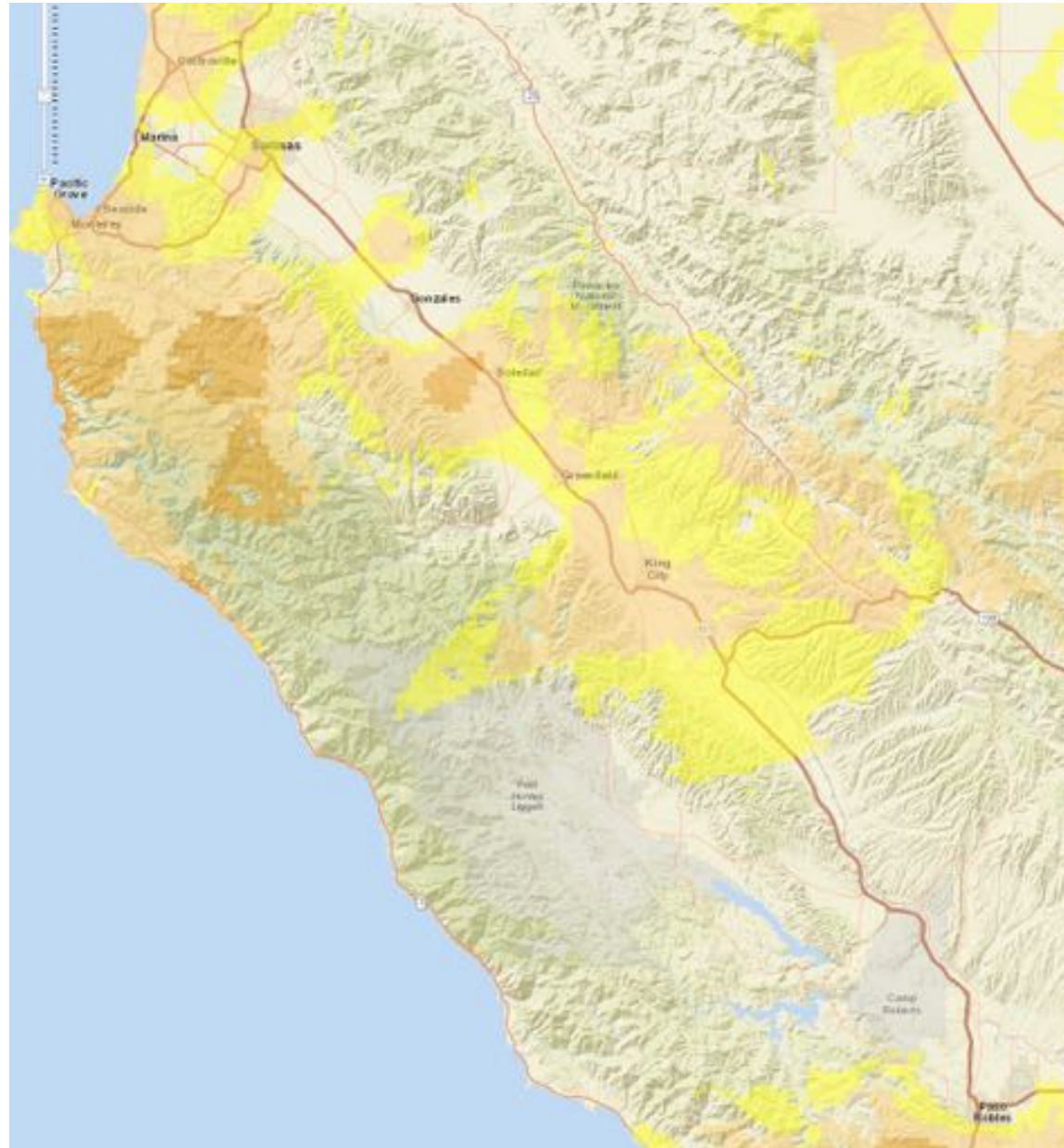
Verizon



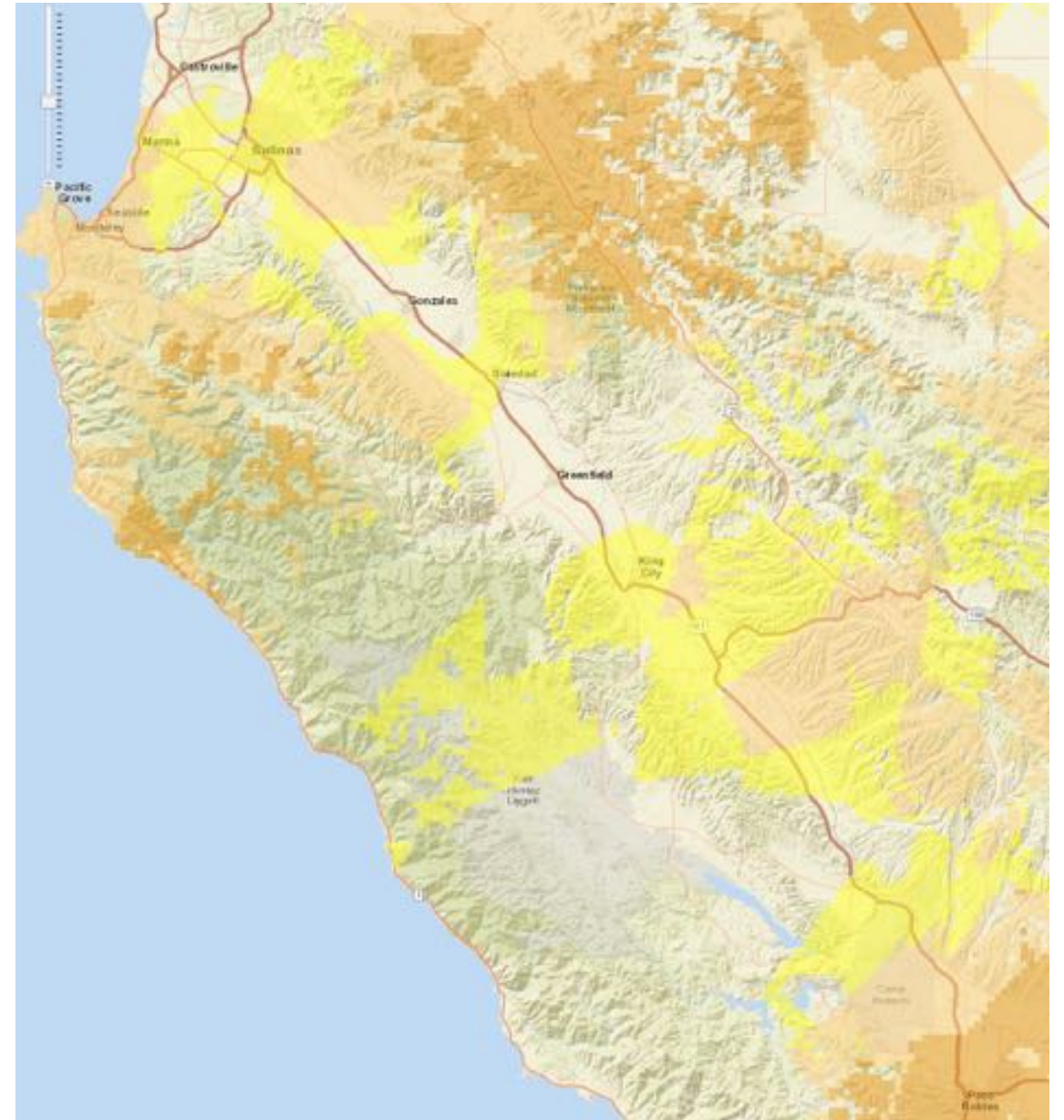
Wireless coverage spotty, poor

CPUC Measured Coverage

AT&T



Verizon



Wireless coverage spotty, poor

Salinas Valley AgTech Broadband Ecosystem

Long haul, intercity fiber growing, access improving.

Distribution infrastructure limited, growth will be driven by last mile projects and demand.

Last mile requires many different solutions, depending on application and resources.

Final question: who is responsible for solving it?



Central Coast Broadband Consortium

Back up slides



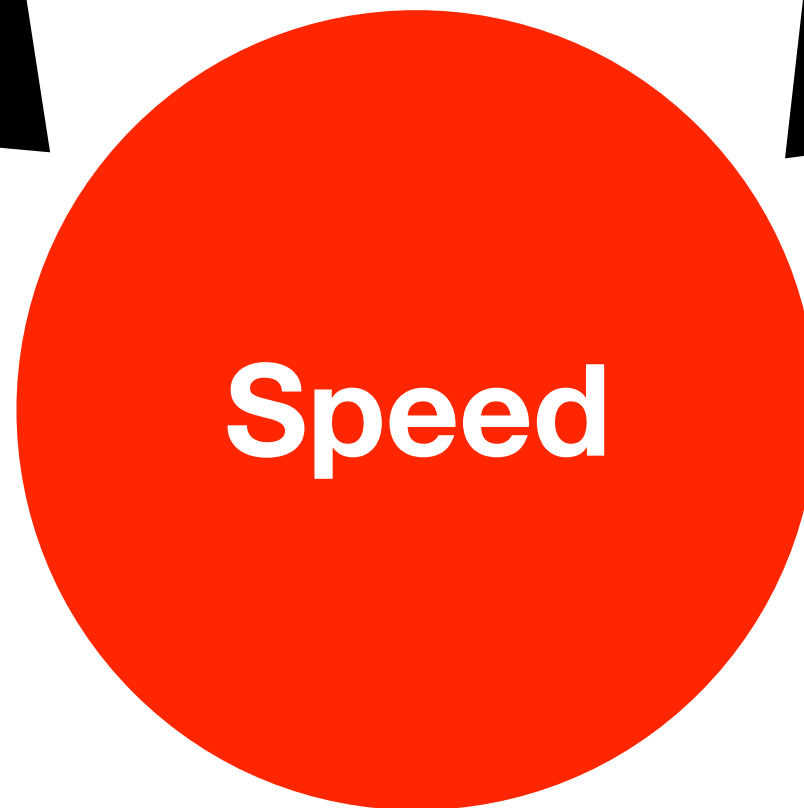
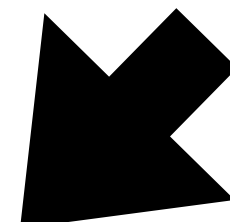
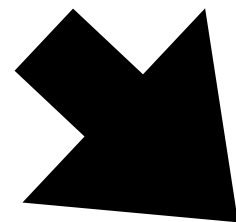
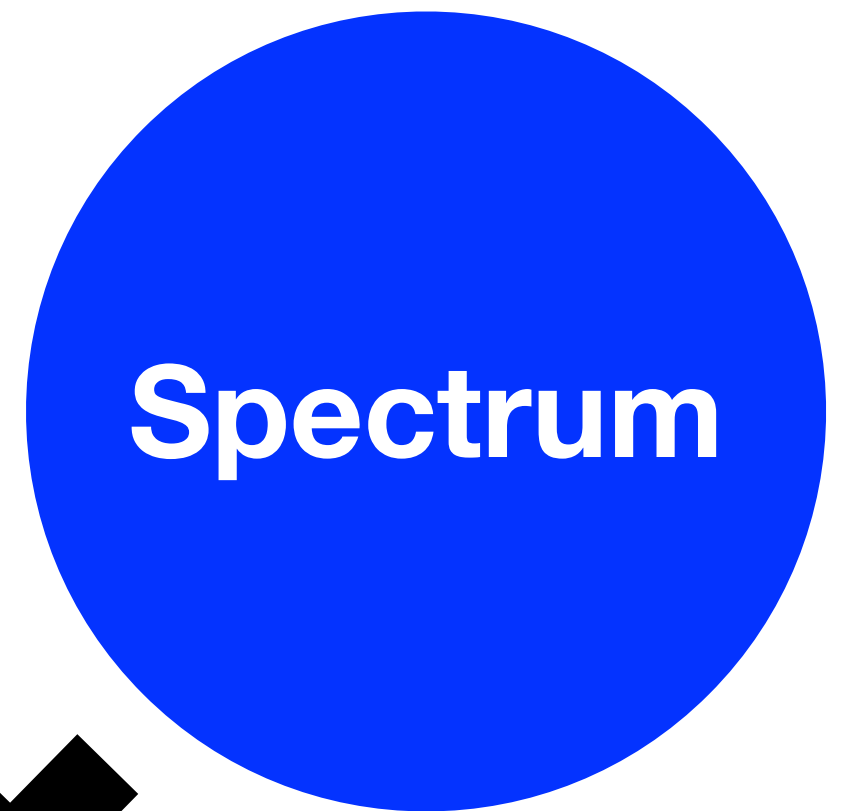
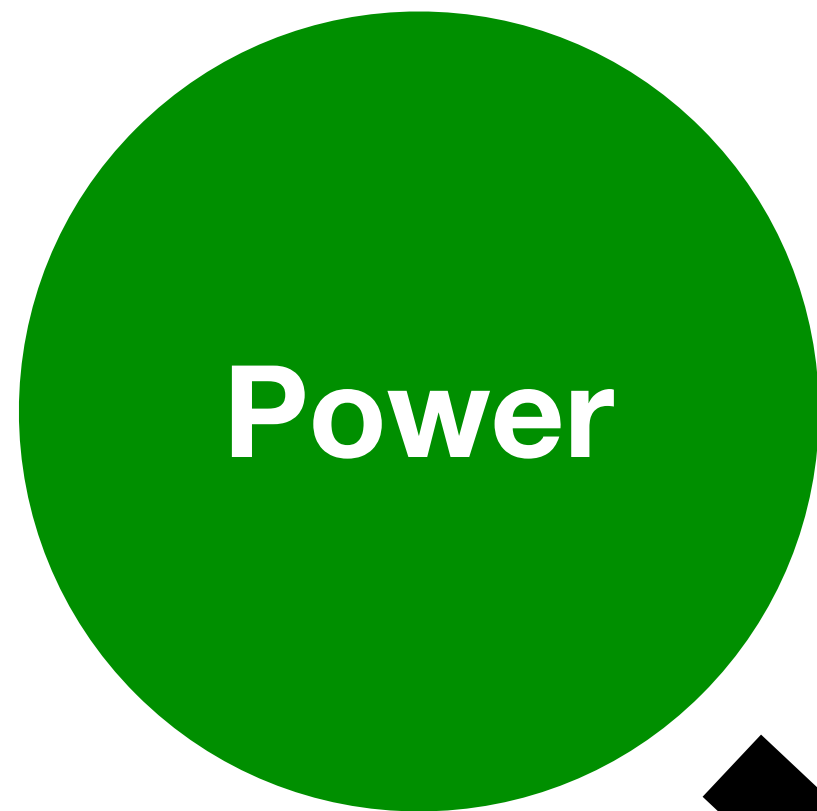
Tellus Venture
Associates

Steve Blum

President

steveblum@tellusventure.com

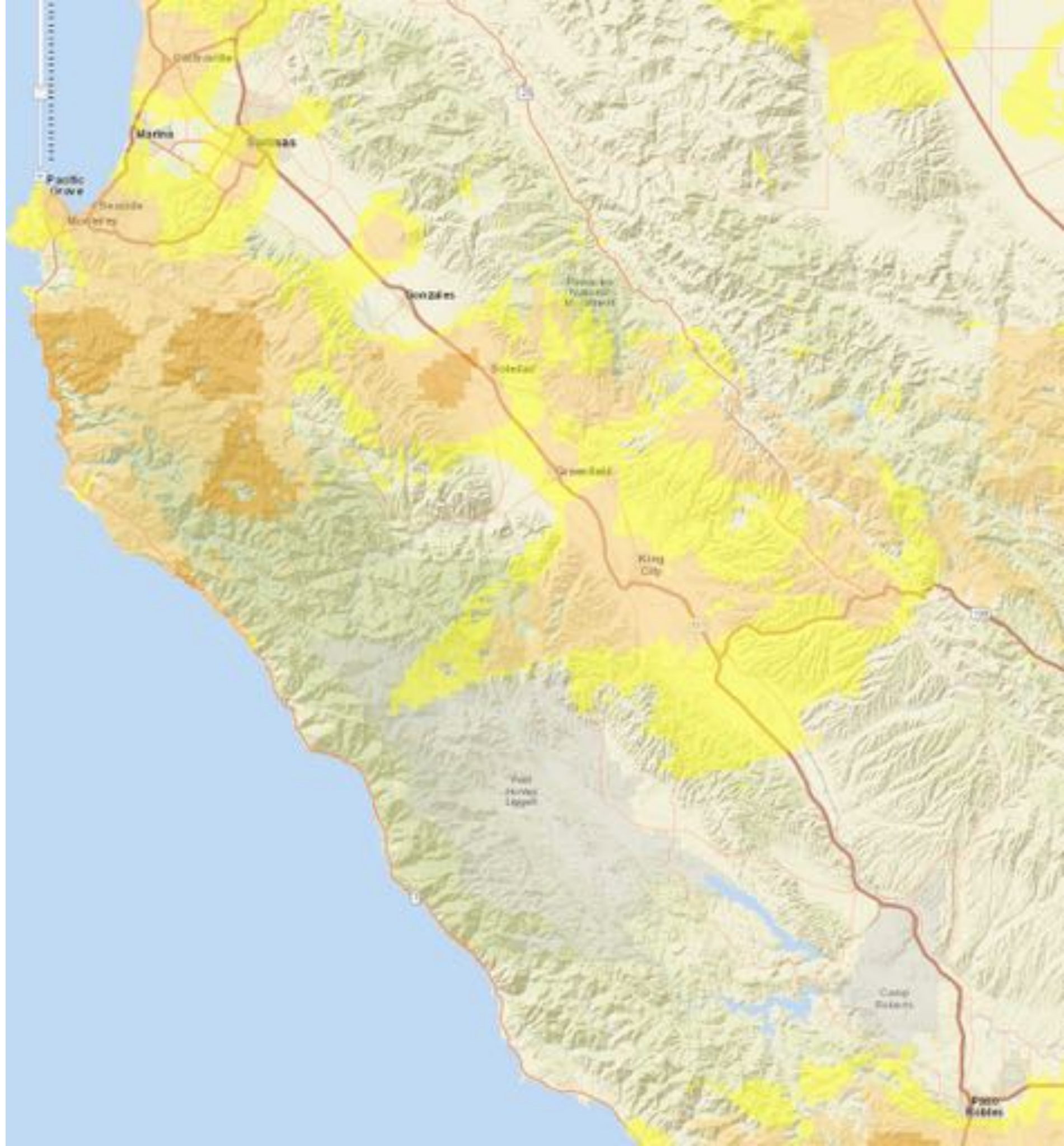
www.TellusVenture.com



Power (effective Watts) & spectrum (Hertz) determine wireless bit rates

Power is the primary AgTech constraint

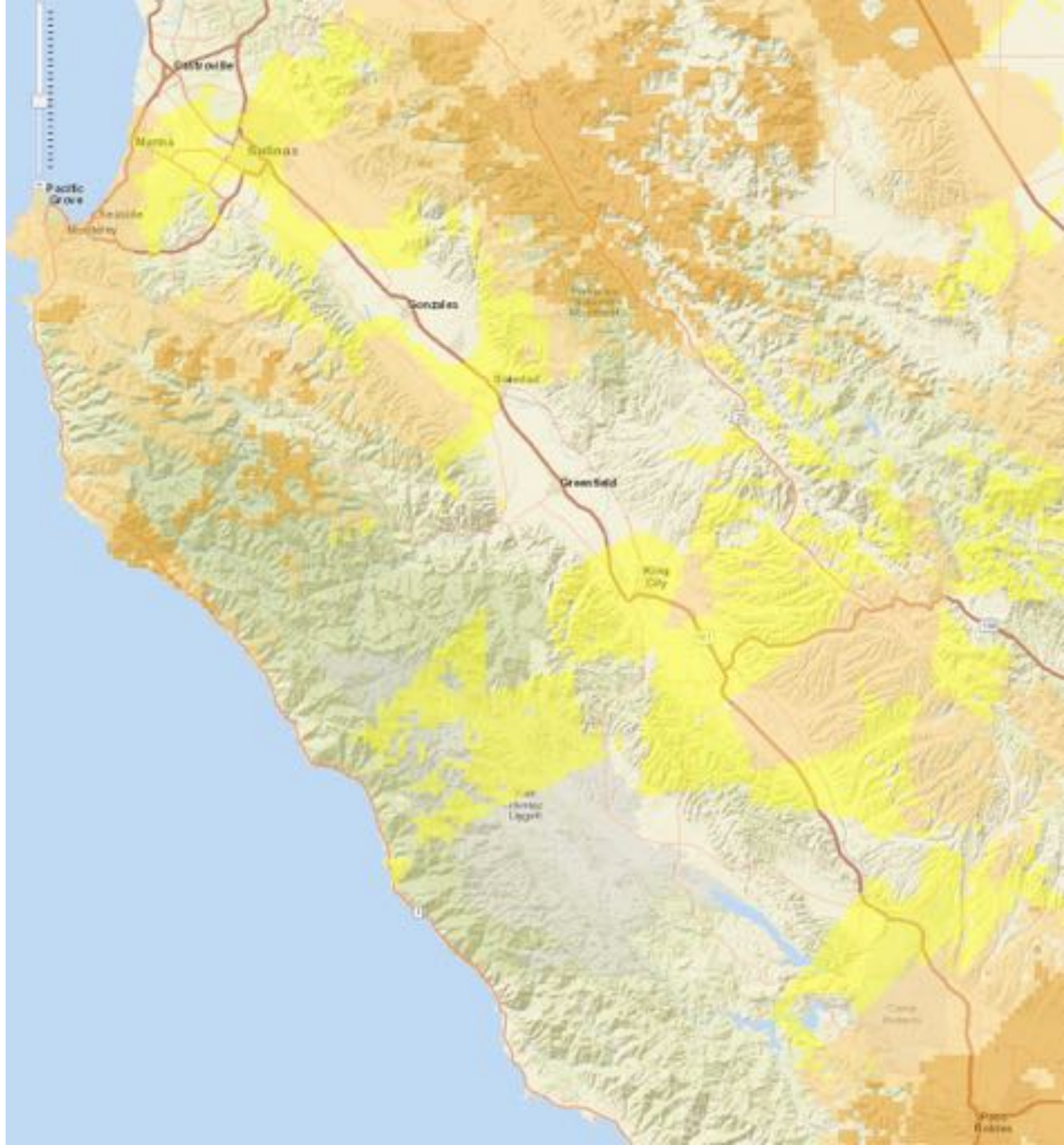
AT&T



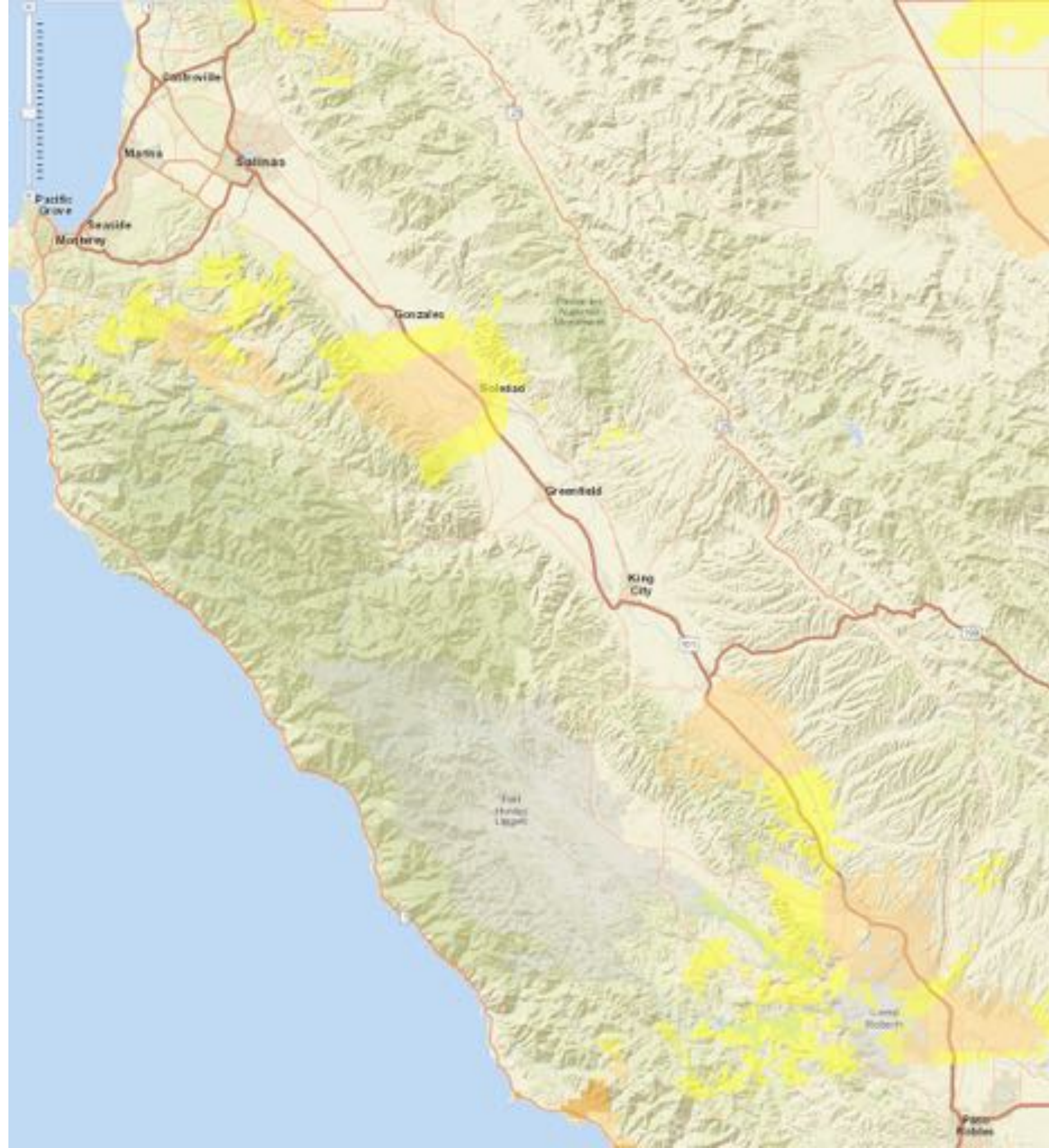
Source: CPUC Spring 2016
mobile field testing and
analysis.

Verizon

Source: CPUC Spring 2016
mobile field testing and
analysis.

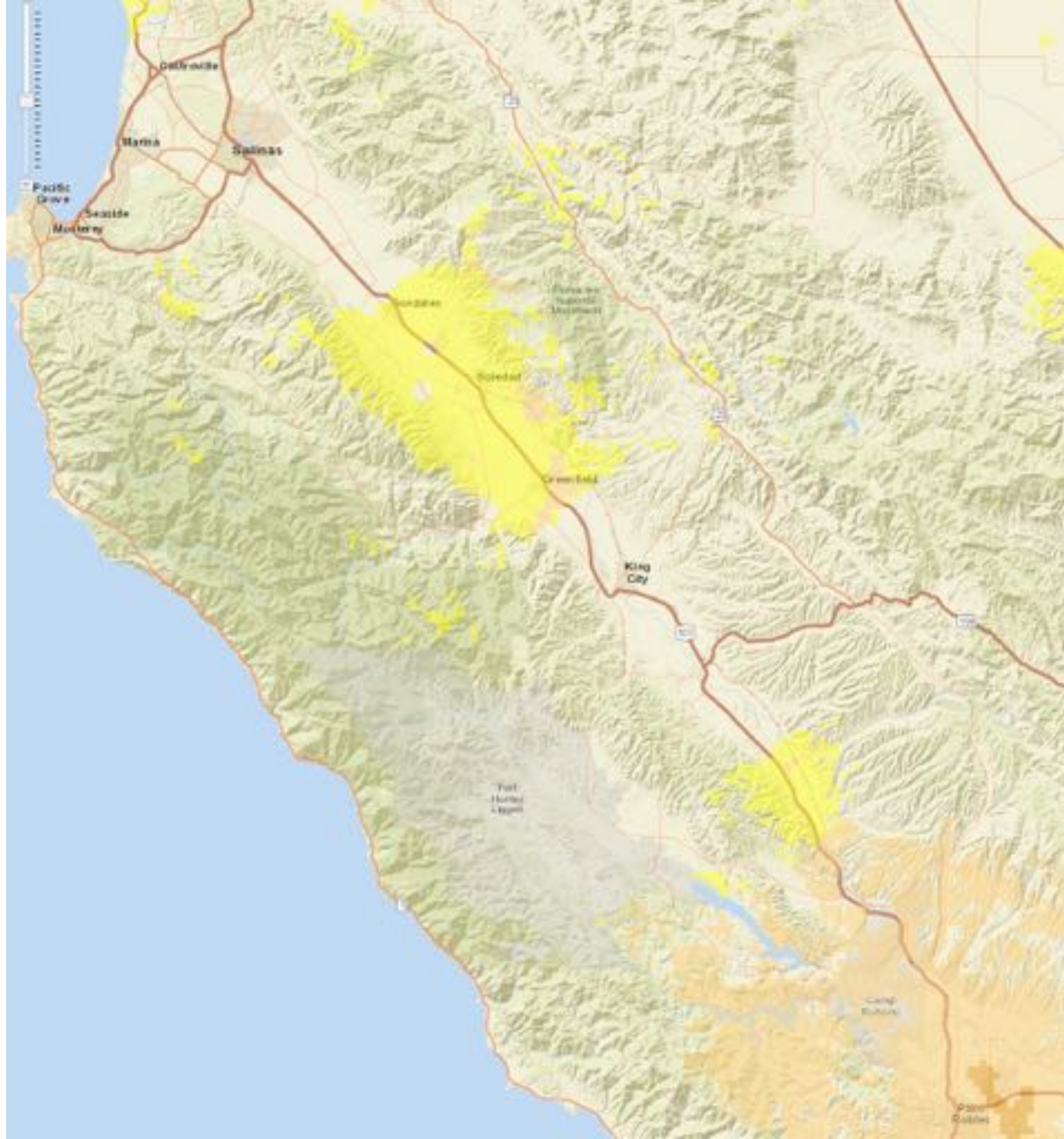


Sprint



Source: CPUC Spring 2016
mobile field testing and
analysis.

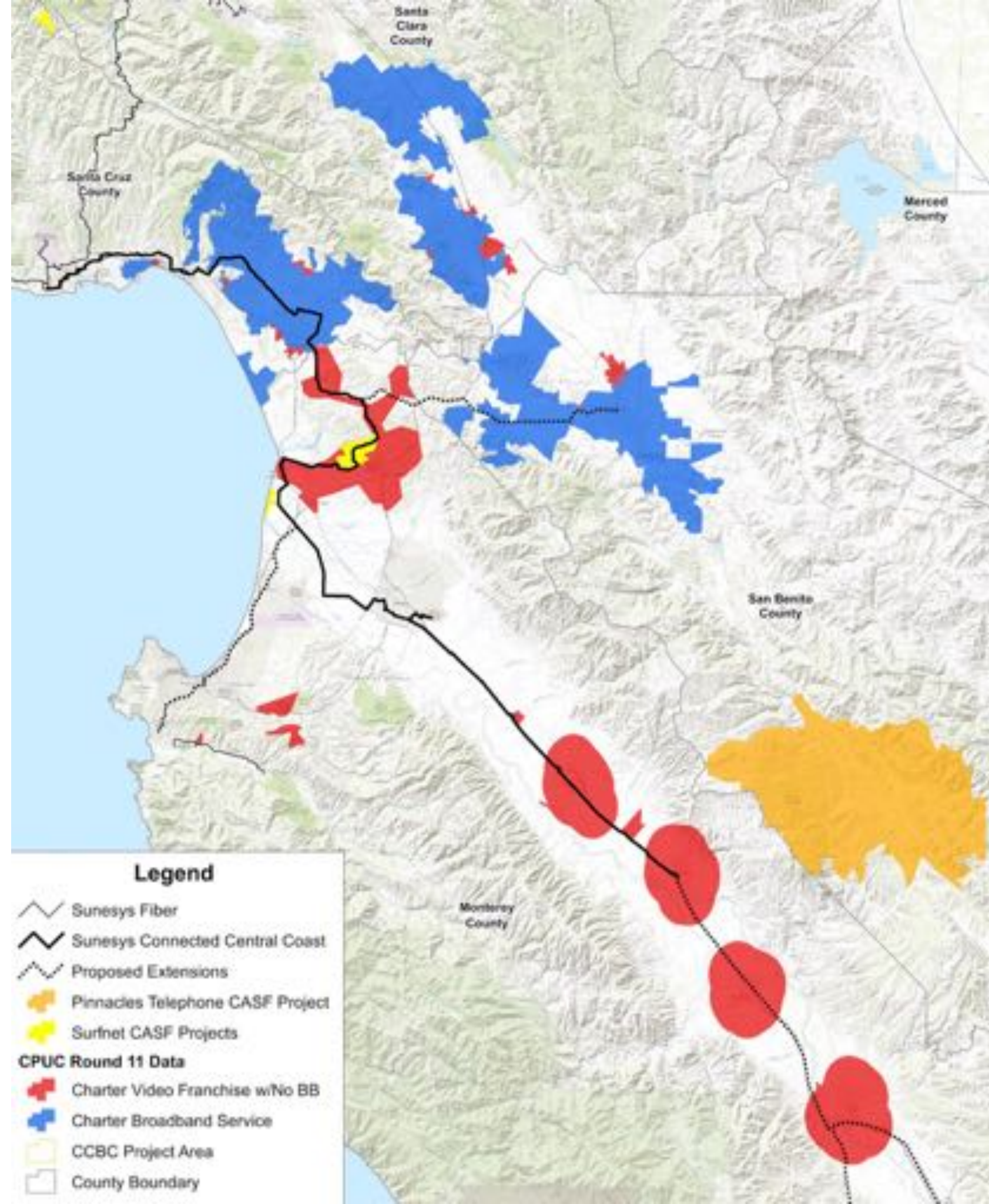
T-Mobile



Source: CPUC Spring 2016
mobile field testing and
analysis.

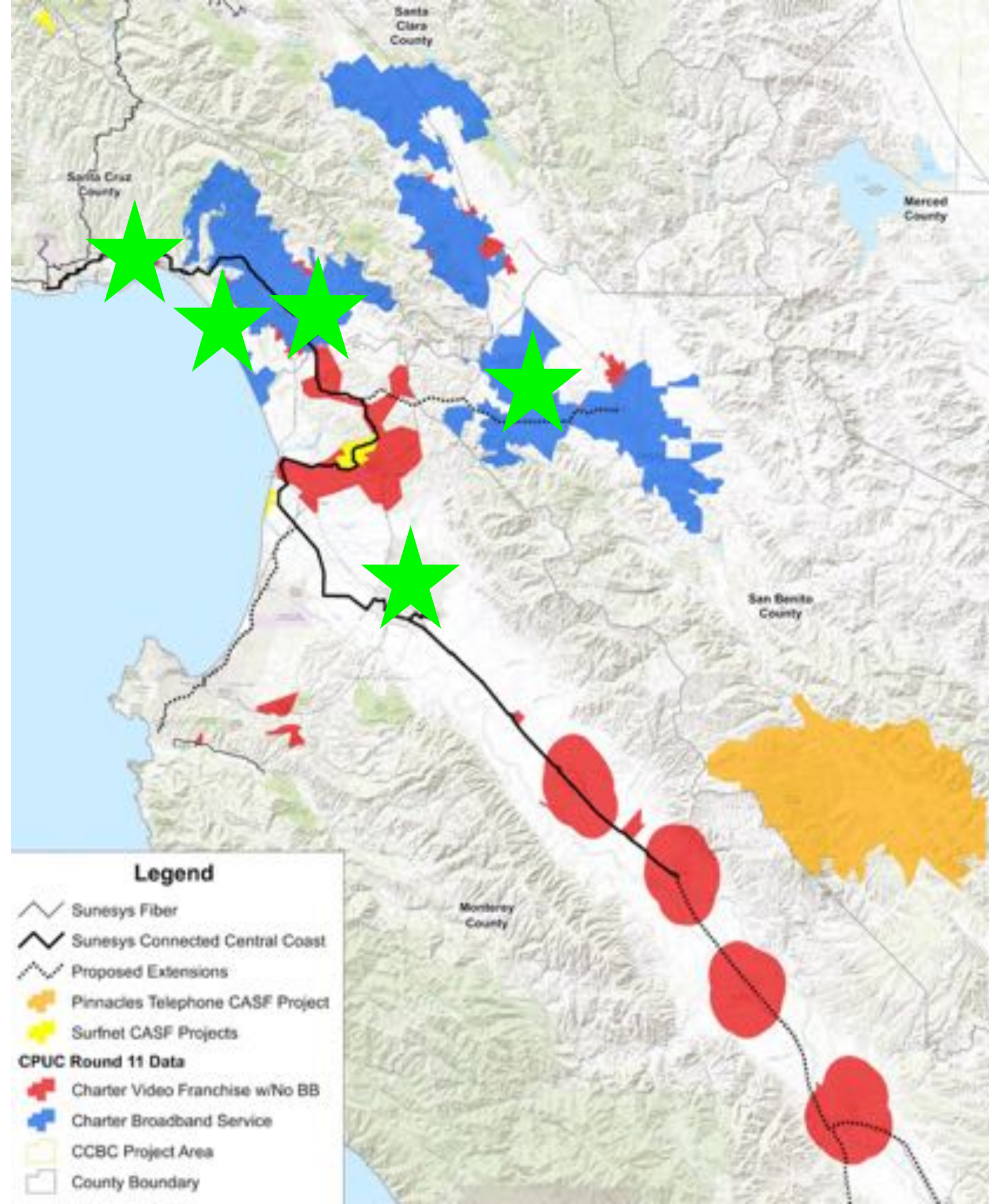
Infrastructure projects changing the landscape

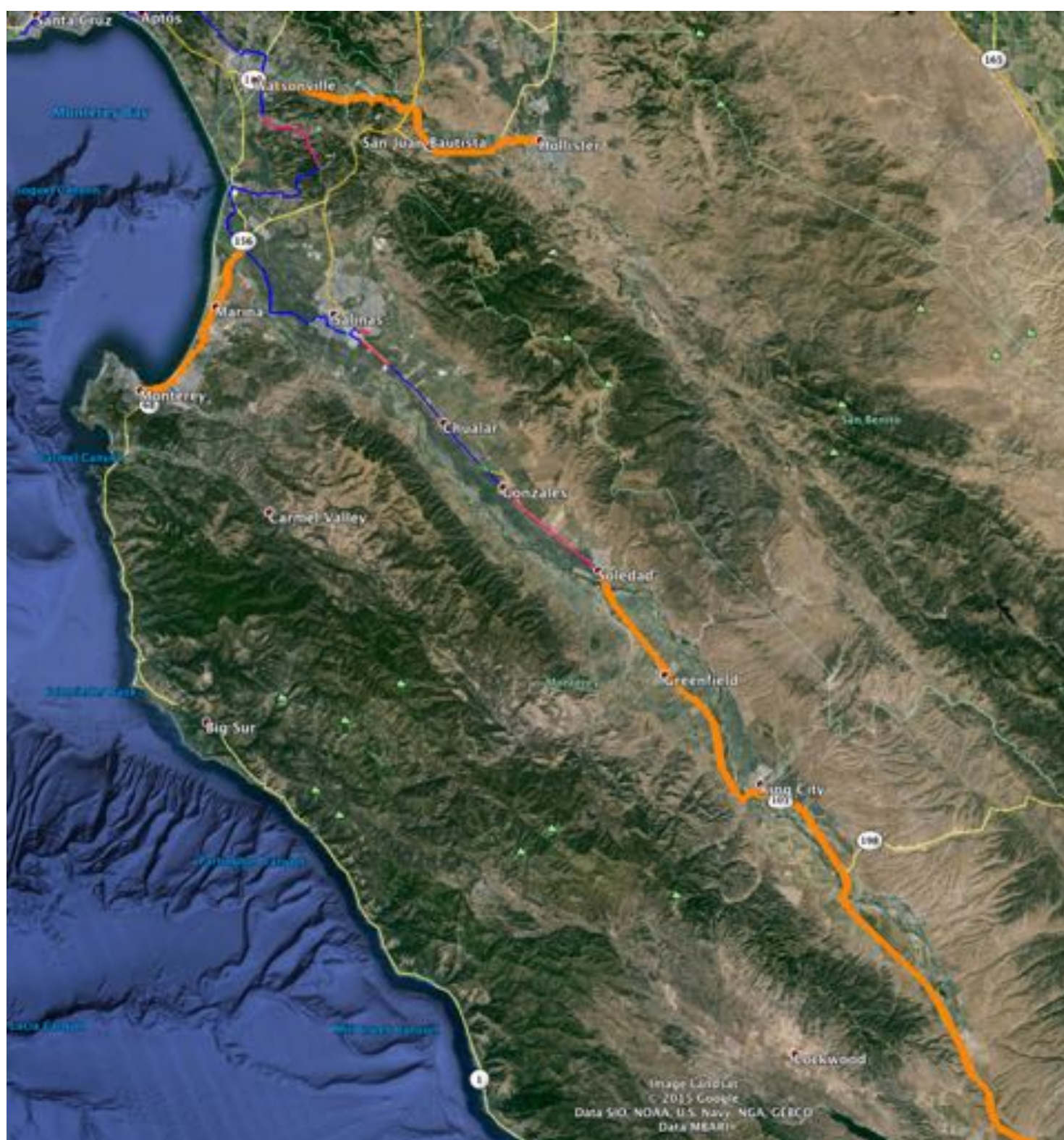
- Sunesys project will be regional backbone.
- Infrastructure builds by incumbents, independents.



Infrastructure projects changing the landscape

- Sunesys project will be regional backbone.
- Infrastructure builds by incumbents, independents.
- Muni projects in Santa Cruz (city & county), Watsonville, Hollister, Salinas. ★





Extend middle mile to King
City, SLO, Hollister & Monterey

Current projects show
feasibility

Monterey County

1. Greenfield
2. King City
3. Gonzales

Regional Wild Cards

1. Soledad
2. Castroville
3. Chualar

Santa Cruz County

1. Pleasure Point/Twin Lakes
2. Soquel
3. Brookdale

San Benito County

1. Aromas area
2. Airport/Northeast area
3. Cienega Road area

CCBC priority areas

100,000 people total
70,000 people CASF eligible
12 feasible projects

Central Coast Region – Charter Redlining

City	California FTB 2014 Returns	California FTB 2014 AGI total	Average Adjusted Gross Income	Charter broadband?
Capitola	5,237	\$322,618,000	\$61,604	Yes
San Juan Bautista	1,819	\$110,435,000	\$60,712	Yes
Hollister	21,970	\$1,217,528,000	\$55,418	Yes
Watsonville	36,888	\$1,602,864,000	\$43,452	Yes
Soledad	7,039	\$288,544,000	\$40,992	NO
Gonzales	4,112	\$161,665,000	\$39,315	NO
King City	6,942	\$265,079,000	\$38,185	NO
Greenfield	7,384	\$252,549,000	\$34,202	NO

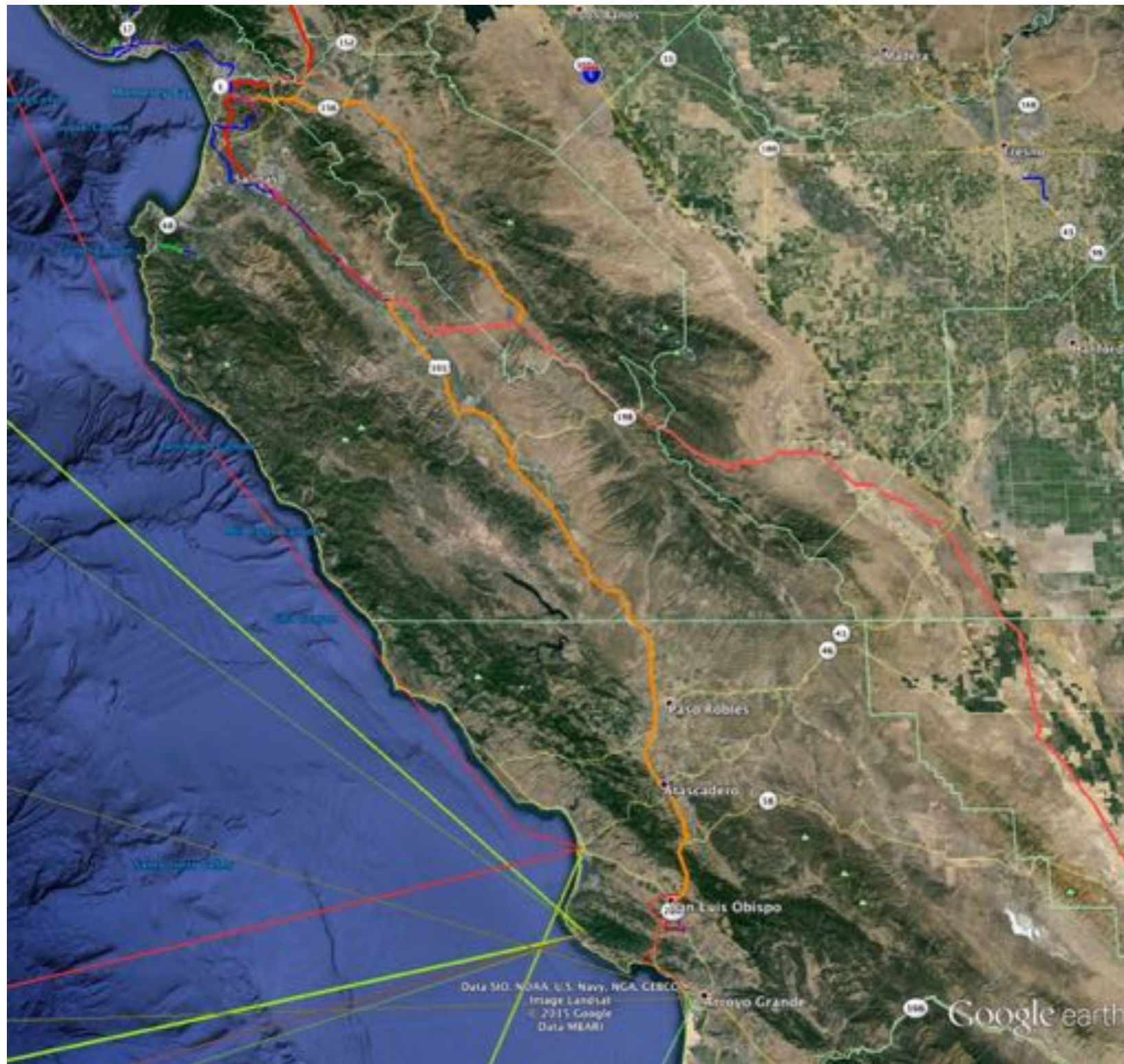
Source: California Franchise Tax Board Personal Income Statistics, February 2015

Redlining correlates to
income levels

CPUC proceeding best
chance for upgrades



Includes detailed fiber survey



Extend fiber to King City &
SLO, complete Hollister loop

Links greater Salinas Valley to major routes