

**Legend**

Bike Shop (Tienda de Bicicleta)	Park and Ride Lot (Estacionamientos de Intercambio)
Bike Rental (Alquiler de Bicicleta)	Library (Biblioteca)
Fire Station (Departamento de Bomberos)	City Hall (Ayuntamiento)
Hospital	High School (Escuela Secundaria)
Campground (Campamento)	College (Universidad)
Transit Center (Estación de Tránsito)	Airport (Aeropuerto)
Public Restroom (Baños Público)	Caltrans Route (Ruta de Caltrans)
	Pacific Coast Route (Ruta de Costa Pacifico)

**Note: All Fire Stations provide free drinking water.**

Bike routes shown are officially designated by the jurisdictions through which they pass, or are designated by Caltrans. The Transportation Agency for Monterey County has not undertaken any safety review of bike routes and facilities shown herein. The Transportation Agency has collected bike route and facility information. Those routes and facilities are identified on this map as an aid to the bicyclist. The Transportation Agency, its officers, employees, contractors, and the jurisdictions included on this map, shall not be responsible in any manner for loss, damage, or injury that may be suffered by users of this map. Some roads shown on this map may be privately-owned, and no right of way for public travel is intended by their inclusion on this map.

**Bikes on Busses**  
All Monterey-Salinas Transit busses are equipped with bike racks on the front of the bus. Two bicycles can be carried on each bus rack. Bicycles may also be allowed inside the bus if space is available in the wheelchair area, but wheelchairs take priority over bicycles. For route information contact Monterey-Salinas Transit at (831) 899-2555, (831) 425-7695 or on the web at: [www.mst.org](http://www.mst.org).

For further information contact the following agencies:

Transportation Agency for Monterey County  
55-B Plaza Circle  
Salinas, CA 93901  
(831) 775-0903 [www.tamcmonterey.org](http://www.tamcmonterey.org)

Caltrans  
Bicycle Coordinator  
50 Higuera Street  
San Luis Obispo, CA 93401  
(805) 549-3282 [www.dot.ca.gov](http://www.dot.ca.gov)

U.S. Bureau of Land Management  
20 Hamilton Court  
Hollister, CA 95023  
(831) 630-5000

California Highway Patrol  
19055 Portola Dr.  
Salinas 93908-1212  
831-455-4800 [www.chp.ca.gov](http://www.chp.ca.gov)

**TAMC**  
TRANSPORTATION AGENCY FOR MONTEREY COUNTY

Who is TAMC?

The Transportation Agency for Monterey County is the Regional Transportation Planning Agency for Monterey County. TAMC includes representation from its jurisdiction the cities of Monterey, Salinas, Marina, Sand City, Seaside, Carmel Valley, King City, Gonzalez, Soledad, Greenfield, Carmel, and Pebble Beach as well as the unincorporated areas of Monterey County. The mission of the Transportation Agency for Monterey County is to proactively fund, and plan a transportation system that enhances mobility, safety, access, environmental quality and economic activities by investing in regional transportation projects for Monterey County residents, businesses and visitors.

The Transportation Agency Bicycle and Pedestrian Facilities Advisory Committee consists of volunteers from Monterey County that meet on a regular basis to review proposed bike projects, plans, and provide input on existing road/pathways which affect cycling.

For more information on any of the above programs and projects, call the Transportation Agency at 831-775-0903, stop by, or write the Transportation Agency at 55 B Plaza circle, Salinas CA, 93901 or visit us at [www.tamcmonterey.org](http://www.tamcmonterey.org)

All questions and comments are appreciated and can be addressed to the Transportation Agency. By using one of the resources above you can inform the Transportation Agency of any debris or potholes in bike lanes, apply for a free bike locker so you can enjoy bicycling in more places, and voice your opinion on ways Monterey County facilities can meet your bicycling needs.

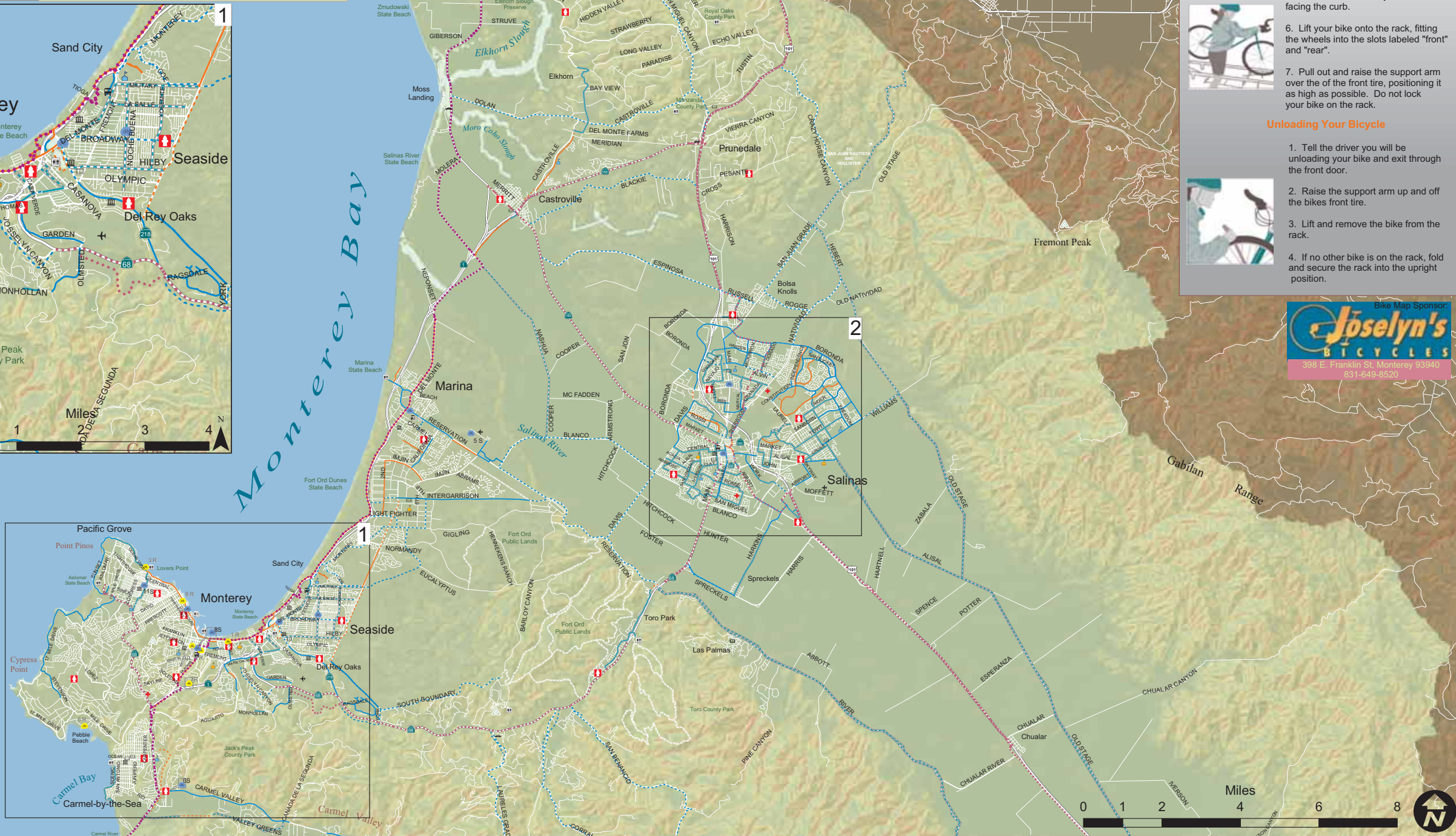
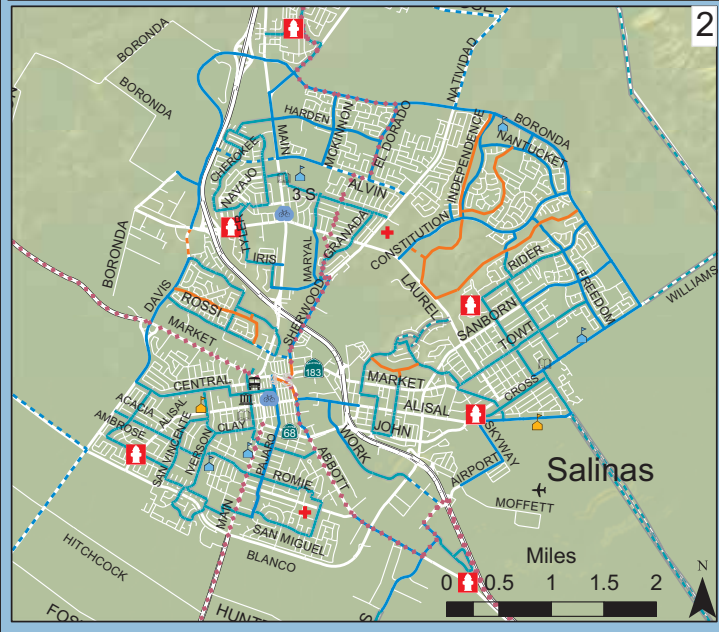
Copyright 2008 Transportation Agency for Monterey County

**Bicycle Shops**

- 1S. Aquarian Bicycles, 486 Washington St. Monterey
- 2S. Bay Bikes, 585 Cannery Row # 101, Monterey
- 3S. Bear Bikes, 1288 N Main St, Salinas
- 4S. Bobcat Bicycles Inc, 141 Monterey St, Salinas
- 5S. Boyerbikes, 721 Neeson Rd, Marina
- 6S. Carmel Bicycle, 7150 Carmel Valley Rd, Carmel-By-The-Sea
- 7S. Copacabana Bikes, 1986 Noche Buena St., Seaside
- 8S. Joselyn's Bicycles, 398 E Franklin St, Monterey
- 9S. Marina Cycle & Skate, 214 Reservation Rd, Marina
- 10S. Sports Center Bicycles, 1576 Del Monte Blvd, Seaside
- 11S. Winning Wheels Bicycle Shop, 318 Grand Ave, Pacific Grove

**Bicycle Rentals**

- 1R. AAA Bike Cycle Moped Rentals, 1250 Del Monte Ave, Monterey
- 2R. Adventures by the Sea (Cannery Row), 299 Cannery Row, Monterey
- 3R. Adventures by the Sea (Lovers Point), 624 Ocean View Blvd, Pacific Grove
- 4R. Adventures by the Sea (Pirates Cove), 285 Figueroa St, Monterey
- 5R. Adventures by the Sea (Portola Plaza), 201 Alvarado Mall, Monterey
- 6R. Adventures by the Sea (Stillwater Cove), 1576 Cypress Dr. Pebble Beach
- 7R. Bay Bike Rentals, 99 Pacific Street, Monterey
- 8R. Bay Bike Rentals, 640 Wave Street, Monterey



**Loading Your Bicycle On A Bus**

- When the bus approaches, stay on the sidewalk with your back away from the curb.
- Be ready to load your bike by removing any items, such as bags that may interfere with another bike while on bus.
- Load from the curb side of the bus.
- Squeeze and pull on the bike rack handle to release the folded rack. Lower the rack until it clicks into place.
- If there is no other bike on the rack, use the inside slot with your front wheel facing the curb.
- Lift your bike onto the rack, fitting the wheels into the slots labeled "front" and "rear".
- Pull out and raise the support arm over the of the front tire, positioning it as high as possible. Do not lock your bike on the rack.

**Unloading Your Bicycle**

- Tell the driver you will be unloading your bike and exit through the front door.
- Raise the support arm up and off the bikes front tire.
- Lift and remove the bike from the rack.
- If no other bike is on the rack, fold and secure the rack into the upright position.

Bike Map Sponsor:

**Joselyn's BICYCLES**

398 E. Franklin St. Monterey 93940  
831-649-8520