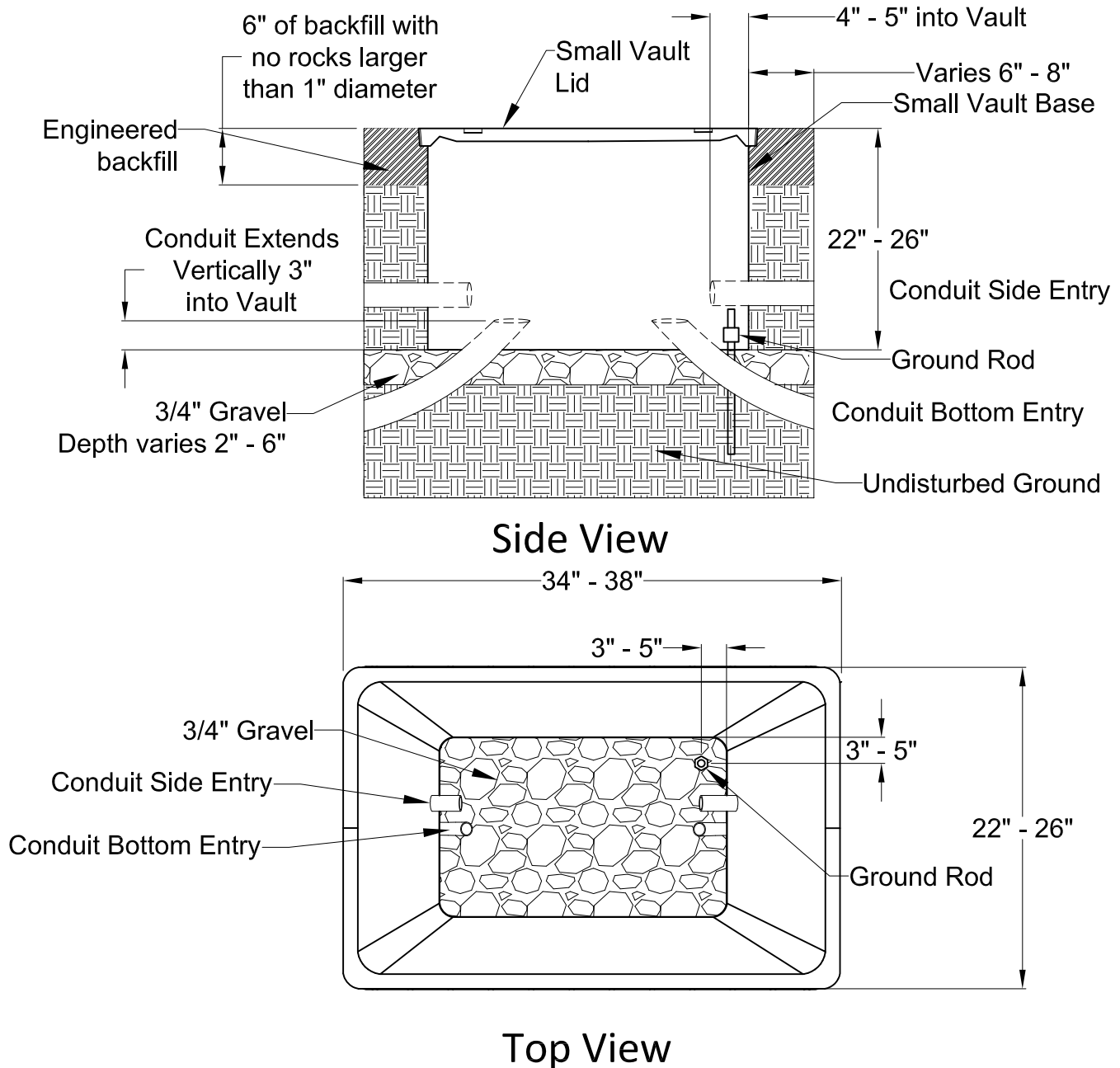


*Appendix A*  
*Typical Facilities*



# General Installation Drawing

## Small Vault - Tier 15



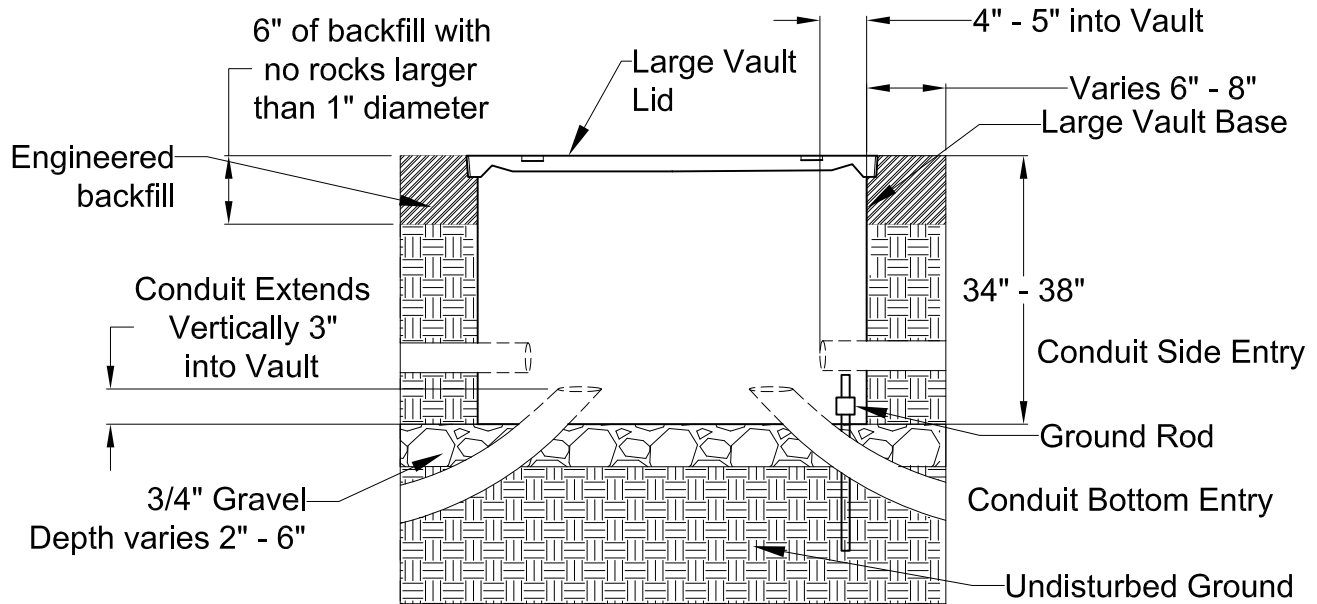
### Notes:

- All small vaults shall conform to the requirements of ANSI/SCTE 77 2010 and GR902 specifications.
- Vaults should be open bottom configuration, with optional holes.
- Cover should have a non-skid surface with coefficient of friction greater than or equal to .5 when installed in a dedicated pedestrian walkway. Cover will have locking capability.
- Vaults should be placed at outer edge of ROW.
- Vaults should be installed to local and local DOT standards if they differ from typical.
- All conduit should be capped or plugged. (Tape may be used for temporary capping during construction only.)
- Maximum number of conduit is (4) - 2" or (4) - 1" per side. DO NOT CUT the vertical racking.
- Tier 15 Rated
- One splice enclosure size large or smaller.
- 144 Maximum cable size.
- Maximum 150' storage.

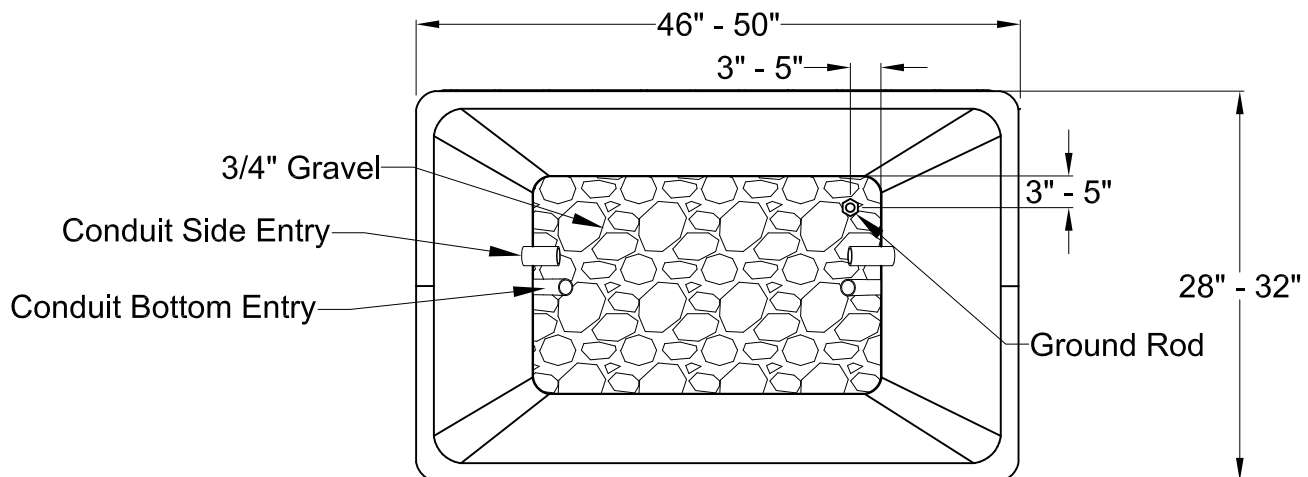
Rev.	Google fiber		
	General Installation Drawing		
	Installation - Small Vault - Tier 15		
	Date	Drawing No.	Rev.
Date	05/22/2014	V05A	-
Appr. By			

# General Installation Drawing

## Large Vault - Tier 15



Side View

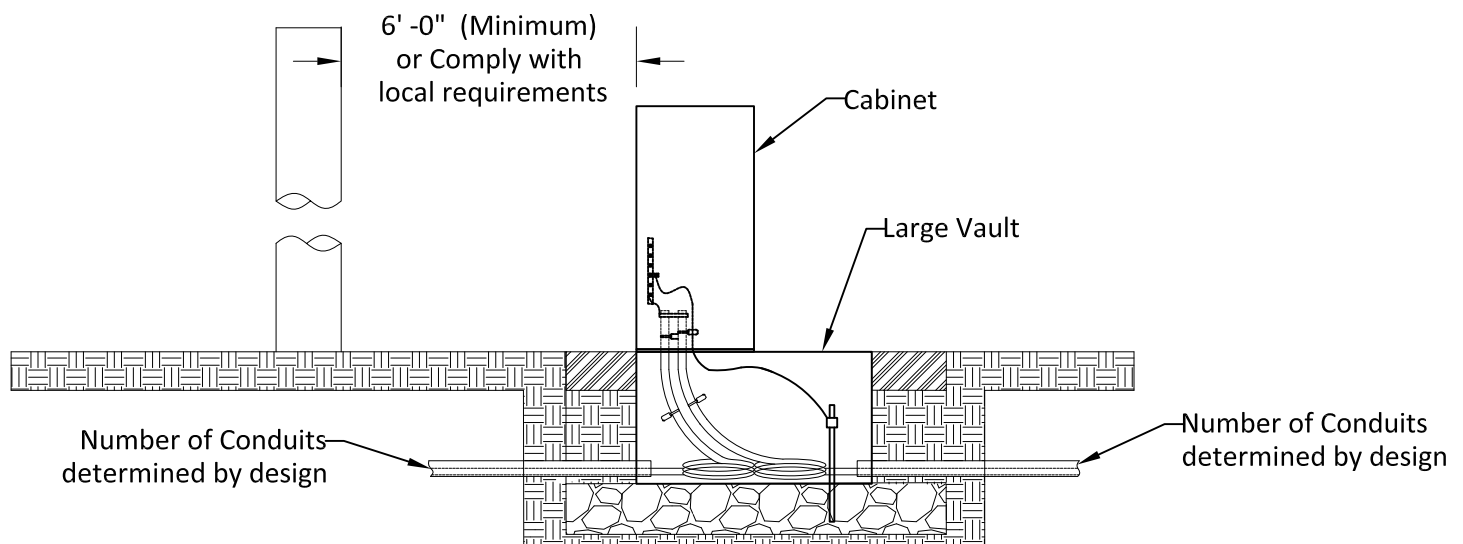
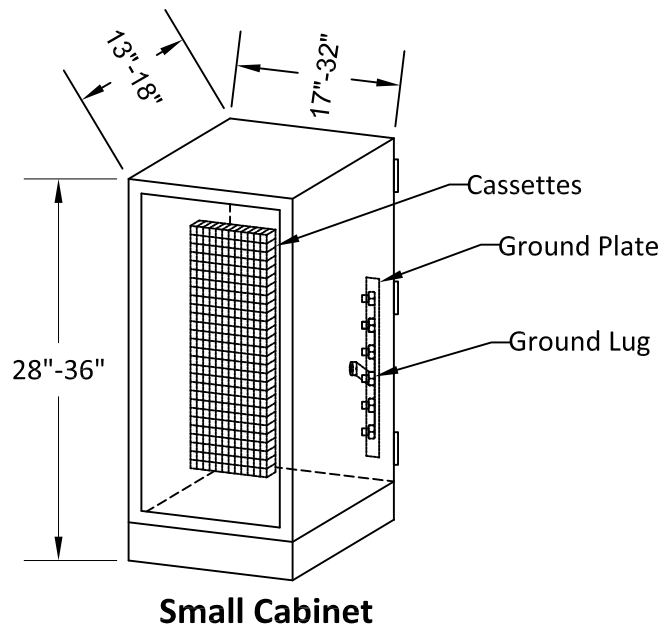


Top View

### Notes:

- All vaults shall conform to the requirements of ANSI/SCTE 77 2010 and GR902 specifications.
- Vaults should be open bottom configuration, with optional holes.
- Cover should have a non-skid surface with coefficient of friction greater than or equal to .5 when installed in a dedicated pedestrian walkway. Cover will have locking capability.
- Vaults should be installed to local and local DOT standards if they differ from typical.
- All conduit should be capped or plugged. (Tape may be used for temporary capping during construction only.)
- Maximum number of conduit is (6) per side. DO NOT CUT the vertical racking.
- Tier 15 Rated.
- Two splice enclosures.
- 288 Maximum cable size.
- Maximum 300' storage.
- Vaults should be placed at outer edge of ROW.


Rev.	Google fiber		
	General Installation Drawing		
	Large Vault - Tier 15		
	Date	Drawing No.	Rev.
Date	05/22/2014	V09A	-



Cabinet (Typical) - Technical Specifications	
	288-Port (Small)
DF Capacity	48
AF Capacity	288
Cable Entry	6

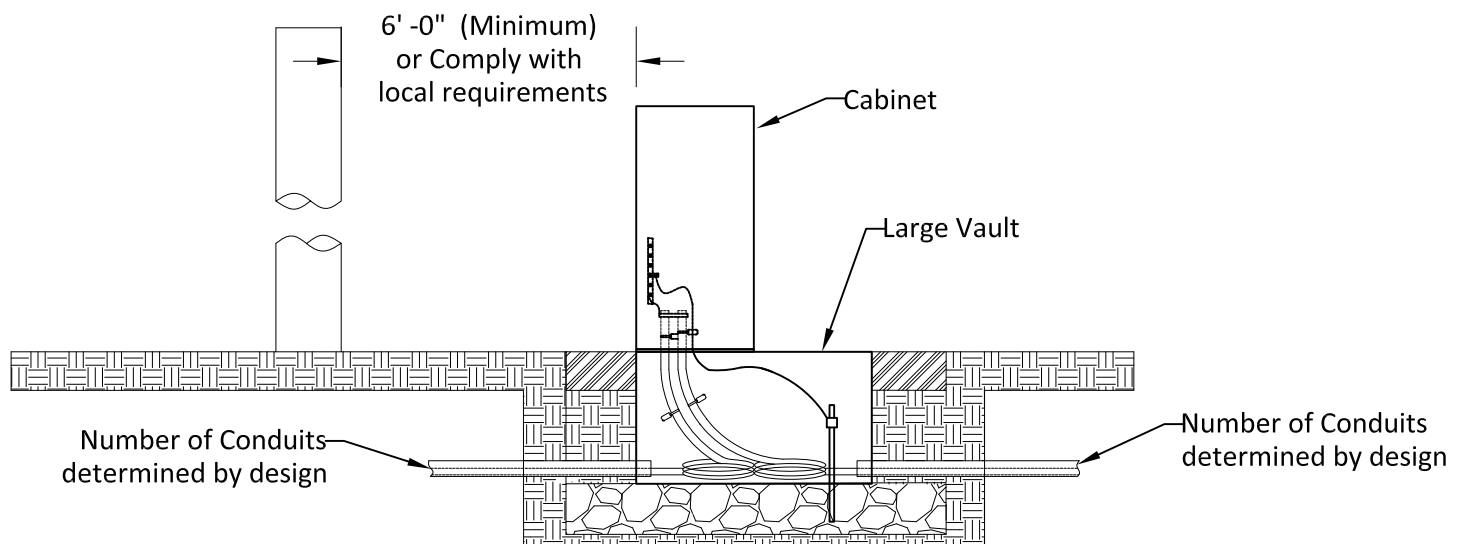
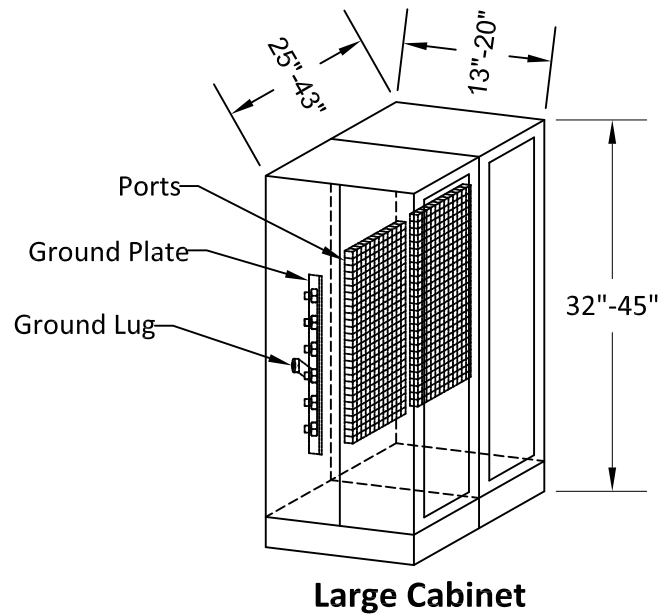
**Notes:**

1. Cabinets will have a ground plate and ground lug.
2. Do not place within 4' of fire hydrant (varies by locality).
3. Do not place where the cabinet will block pedestrian/vehicular views of traffic.
4. Must be placed in public ROW (not on sidewalk).
5. Must be placed at least 10' from nearest pole (varies by locality).
6. Place near side yards with privacy fences.
7. Place cabinets on level surface; do not place on steep grades.
8. Avoid placement in areas with highly manicured landscaping.
9. Avoid placement near bus stops.
10. Do not place where installation and maintenance would be unsafe.
11. See manufacturer's documentation for installation instructions.
12. For grounding refer to Google Engineering Guidelines.

Rev.			
Date	<p align="center"><b>General Installation Drawing</b> Small LCP Cabinet - Vault Mounted</p>		
Appr. By	Date	Drawing No.	Rev.
	06/20/2014	C01A	-

# General Installation Drawing


## Large LCP Cabinet (Vault Mounted)



Cabinet (Typical) - Technical Specifications	
	576-Port (Large)
DF Capacity	96
AF Capacity	576
Cable Entry	12

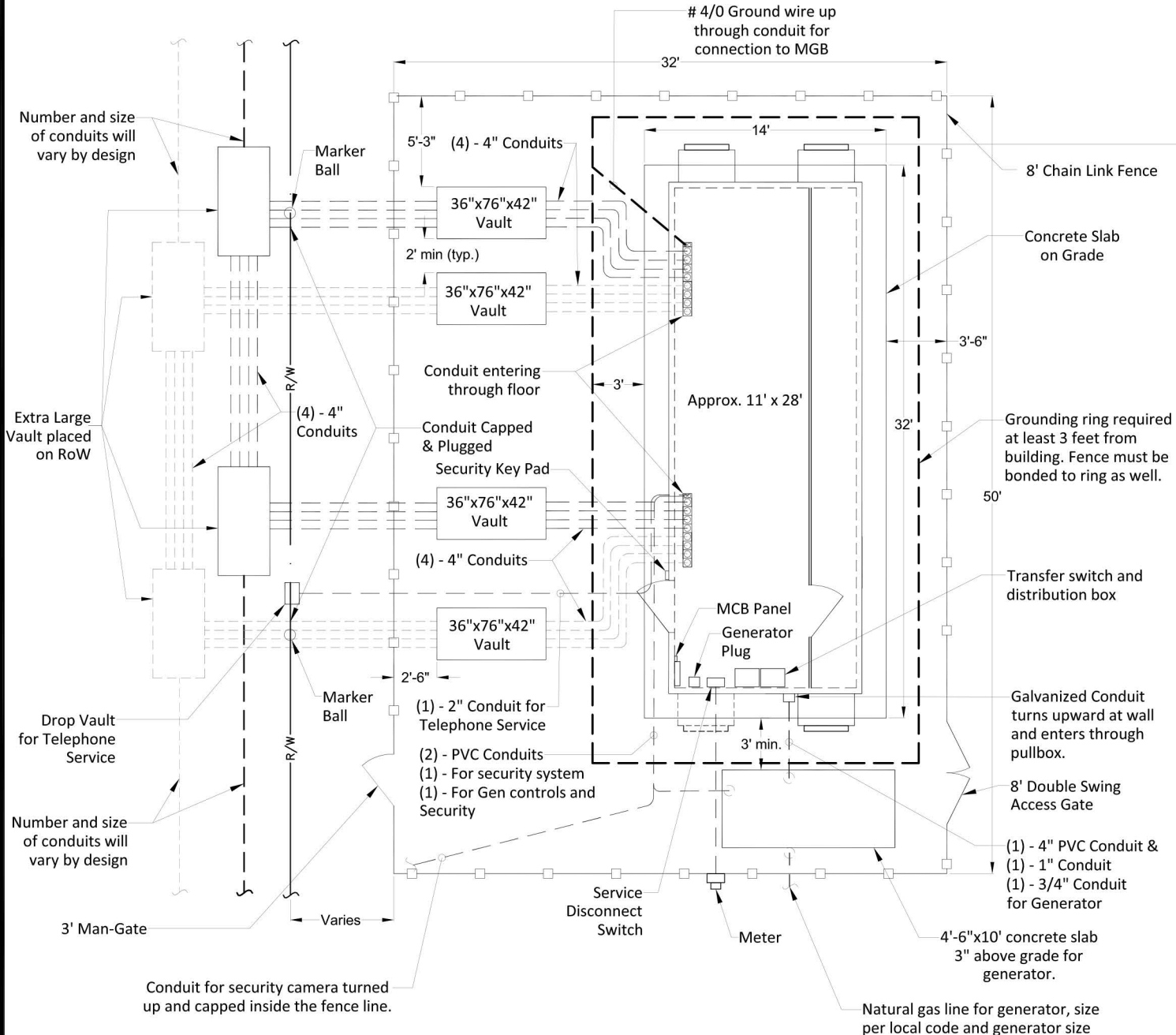
### Notes:

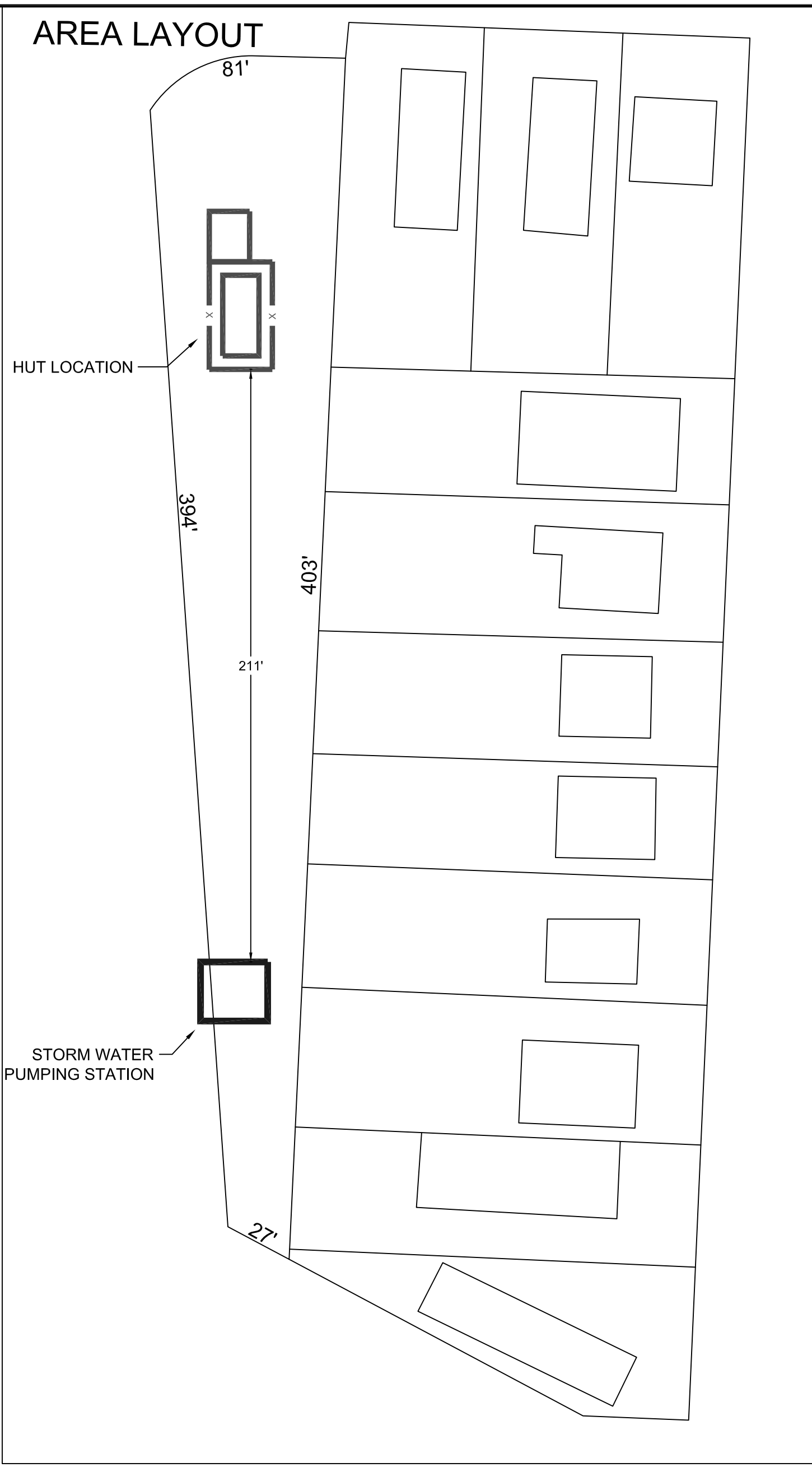
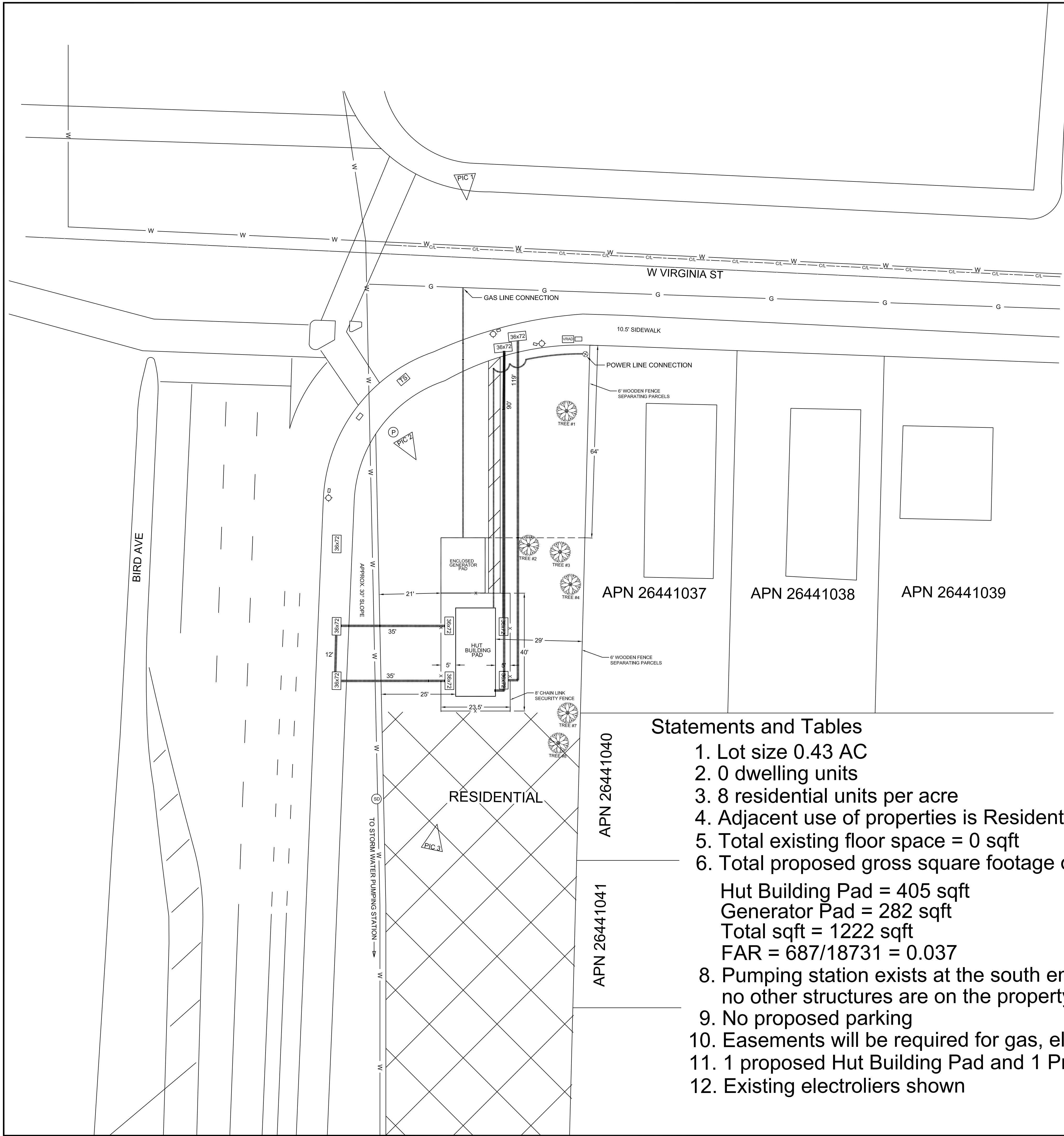
1. Cabinets will have a ground plate and ground lug.
2. Do not place within 4' of fire hydrant (varies by locality).
3. Do not place where the cabinet will block pedestrian/vehicular views of traffic.
4. Must be placed in public ROW (not on sidewalk).
5. Must be placed at least 10' from nearest pole (varies by locality).
6. Place near side yards with privacy fences.
7. Place cabinets on level surface; do not place on steep grades.
8. Avoid placement in areas with highly manicured landscaping.
9. Avoid placement near bus stops.
10. Do not place where installation and maintenance would be unsafe.
11. See manufacturer's documentation for installation instructions.
12. For grounding refer to Google Engineering Guidelines.

Rev. Date Appr. By			
	<b>General Installation Drawing</b> Large LCP Cabinet - Vault Mounted		
	Date	Drawing No.	Rev.
	06/20/2014	C11A	-

# General Installation Drawing Typical Fiber Hut Site Layout

Note: exact spec and layout may vary depending on site-specific conditions





Statements and Tables

1. Lot size 0.43 AC
2. 0 dwelling units
3. 8 residential units per acre
4. Adjacent use of properties is Residential
5. Total existing floor space = 0 sqft
6. Total proposed gross square footage of floor space of non-residential use  
Hut Building Pad = 405 sqft  
Generator Pad = 282 sqft  
Total sqft = 1222 sqft  
FAR = 687/18731 = 0.037
8. Pumping station exists at the south end portion of the property and no other structures are on the property
9. No proposed parking
10. Easements will be required for gas, electric, and fiber
11. 1 proposed Hut Building Pad and 1 Proposed generator Pad
12. Existing electroliers shown

CLIENT:



**ERICSSON**  
2795 Augustine Drive  
Santa Clara, CA 95054

PROJECT INFORMATION:

**SFO109**

BIRD AV & W. VIRGINIA ST  
SAN JOSE, CA 95125

SCALE: 1:30

CURRENT ISSUE DATE:

09/14/2015

ISSUED FOR:

REV:	DATE:	DESCRIPTION:	BY:

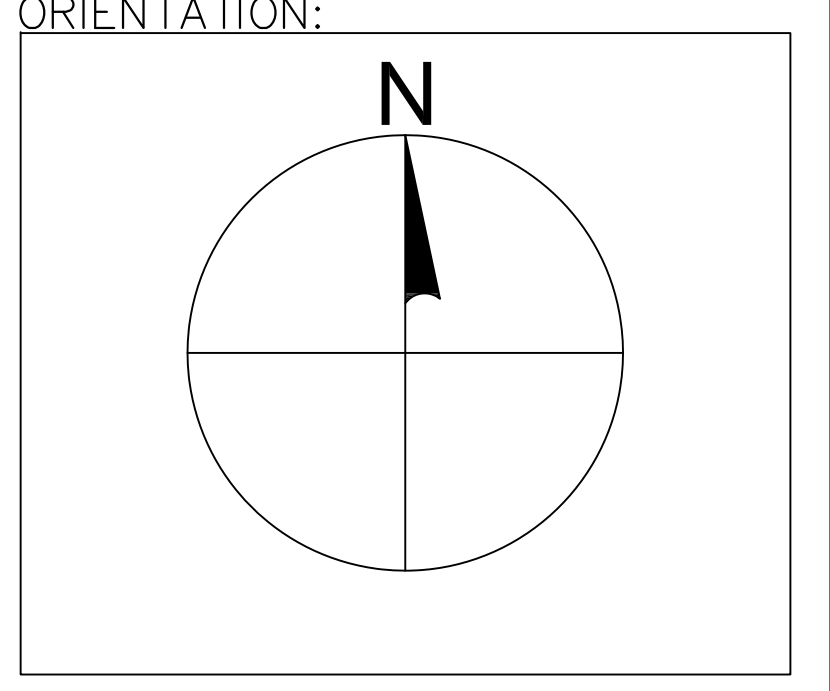
PLANS PREPARED BY:



**ERICSSON**  
2795 Augustine Drive  
Santa Clara, CA 95054

CONSULTANT:

DRAWN BY:	CHK:	APV:
SS	KW	DR



SHEET TITLE:

**SITE PLAN**

SHEET NUMBER:

**2**