

# “A Connected Central Coast” CASF Consortia Grant Project Update

12 April 2012

- Introductions
- Central Coast project overview
- CPUC mapping project
- Questions and discussion
- Lunch

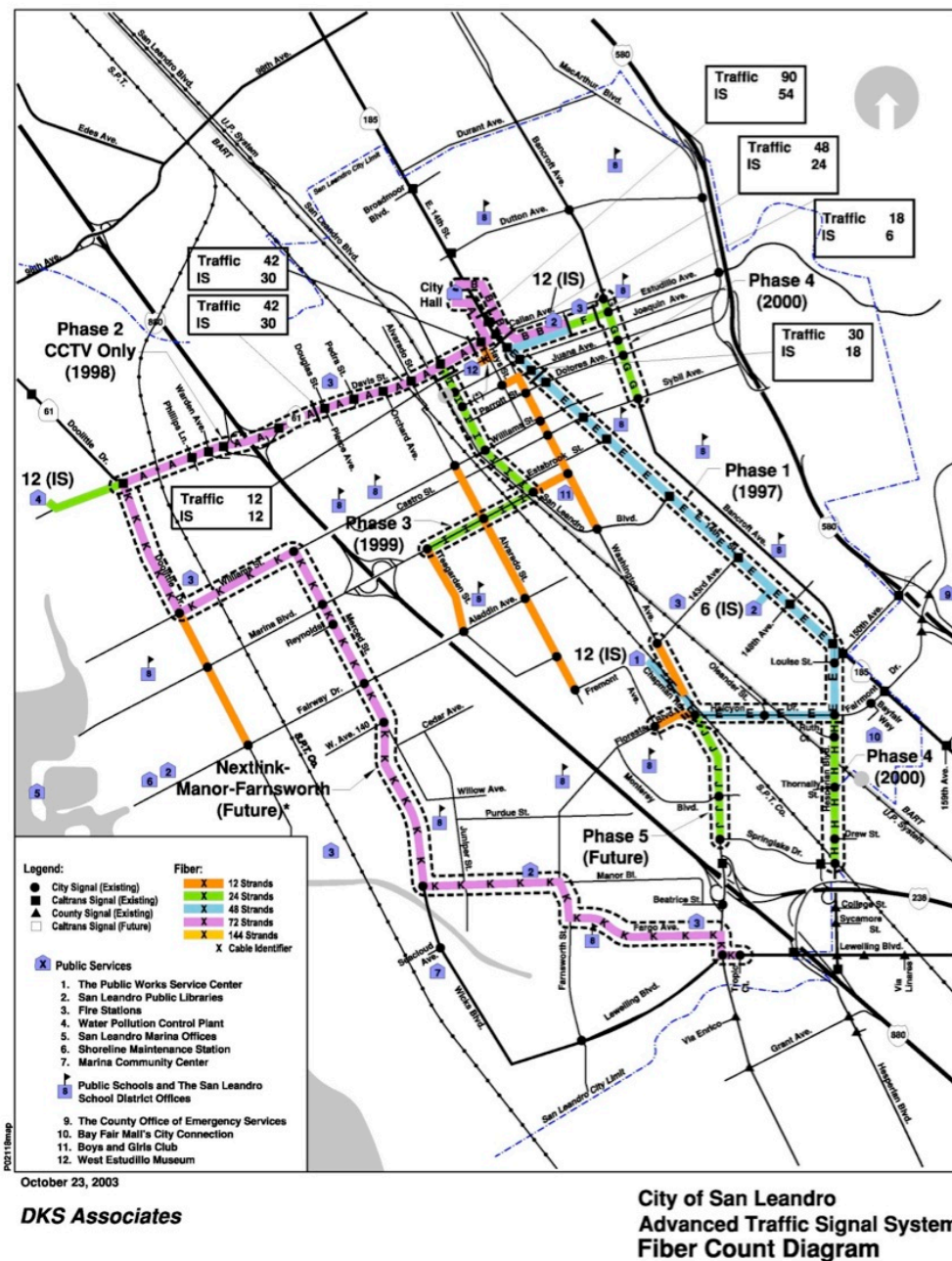
Agenda

One hour

- Primary project: more and better infrastructure
  - Budget
  - Project plan
- Deliverables
  - Maps & database of broadband assets
  - Deployment-friendly model policy bank
  - Framework for carrier incentives
  - Infrastructure & economic development resources
    - Includes specific, neutral support for CASF applications
- Adoption programs round out project

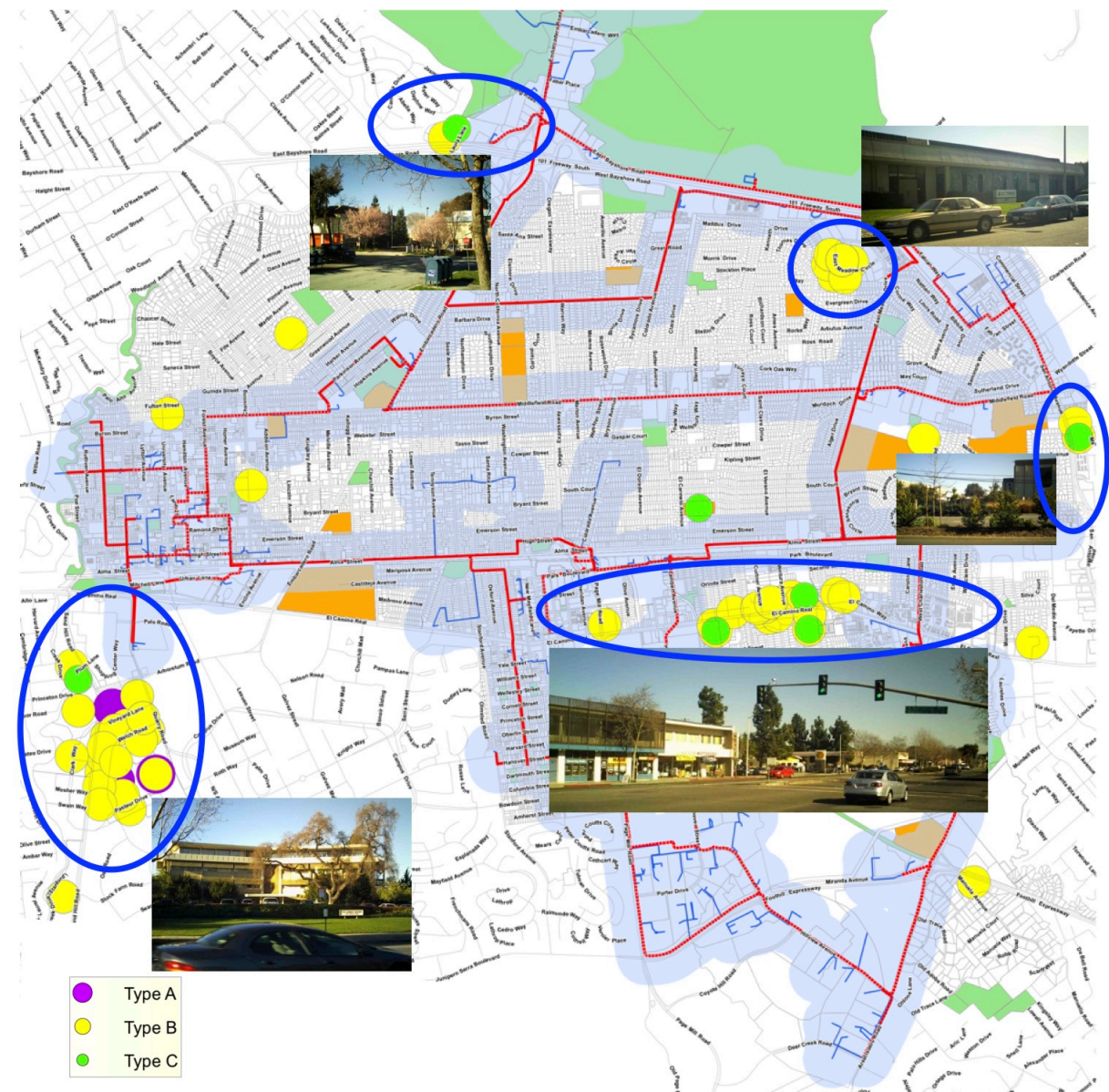
Create common tools

Applicable to policies, priorities,  
programs of individual agencies



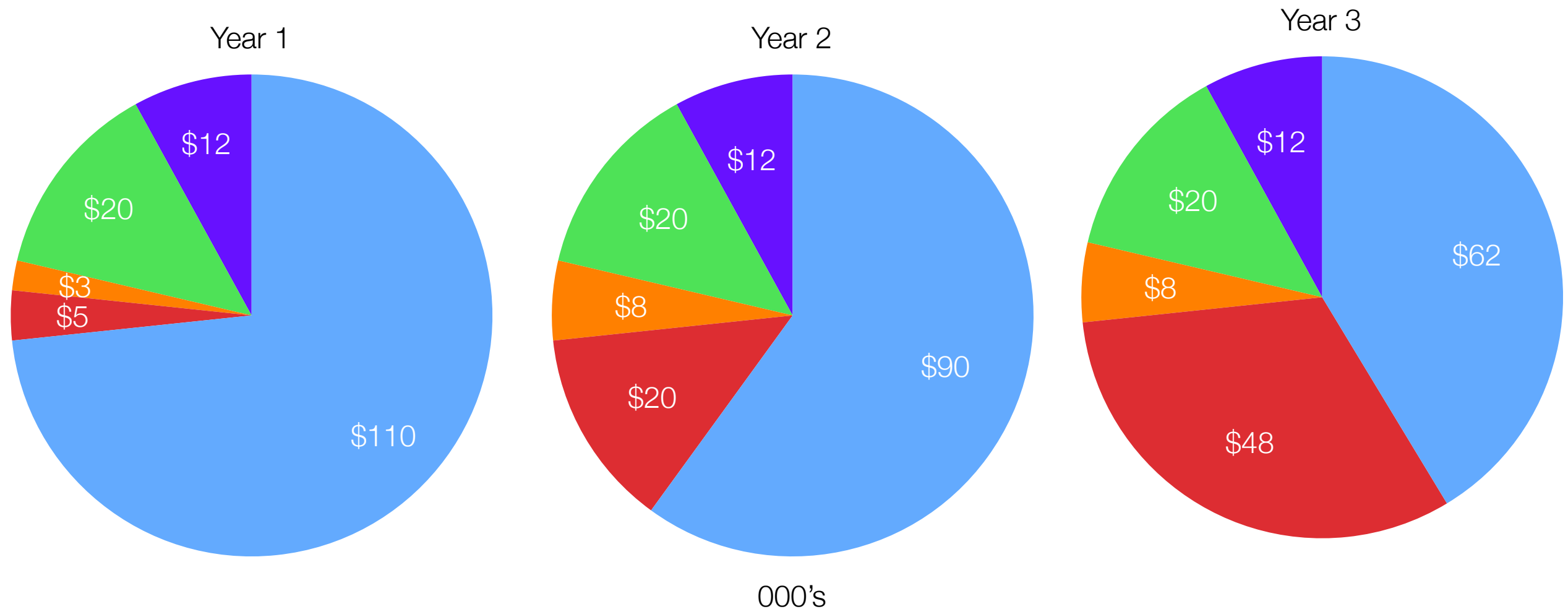
Lit San Leandro

City of Palo Alto fiber

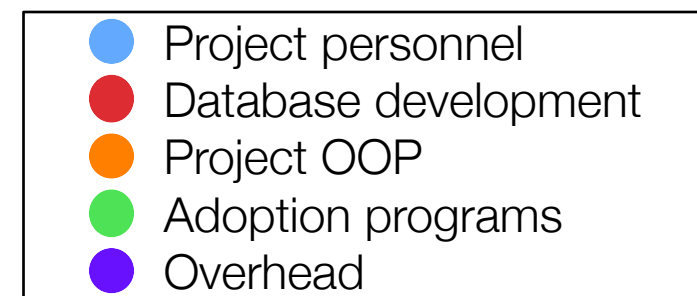


Mapping key to developing  
broadband projects

Sometimes deliberate, but best  
projects are serendipitous



Core grant-funded budget  
\$150K per year



	Year 1	Year 2	Year 3	Total
CASF Consortia Grant	\$150,000	\$150,000	\$150,000	\$450,000
CASF summit travel supplement	\$10,000	\$10,000	\$10,000	\$30,000
CCBC member in-kind contributions	\$57,250	\$76,750	\$76,750	\$210,750
Total	\$217,250	\$236,750	\$236,750	\$690,750



- Carrier, CCBC/community liaison as developed
  - To the extent desired
  - Disclosure/coordination not required
    - However, confidential only to extent allowed by law
- Mapping support
  - Under and unserved area overview
  - On file existing service information for project area
  - Project area demographics by CBG, zip code
  - On file information regarding existing infrastructure
  - Shape files and source information

Provide specific, neutral  
support for CASF applications

Available to any applicant from  
three country region

# Questions?

# Back up slides



- Partner agreements, if any
- Application preparation and filing
- Supporting information, including...
  - Basis for claiming an area is under/unserved
  - Business, marketing, financing, sustainability plans and projections
  - Financial, corporate, organizational, asset information
    - Applicant's existing infrastructure
  - Project budget, plan, engineering, technology

Responsibility on applicant,  
also filing, other elements

Project only provides specific  
support



000's

Economic development analyst	
GIS analyst	
Infrastructure specialist	
Network specialist	
Database developer	
Executive committee/expert groups	

# Responsibilities & budget

Contracted & contributed personnel



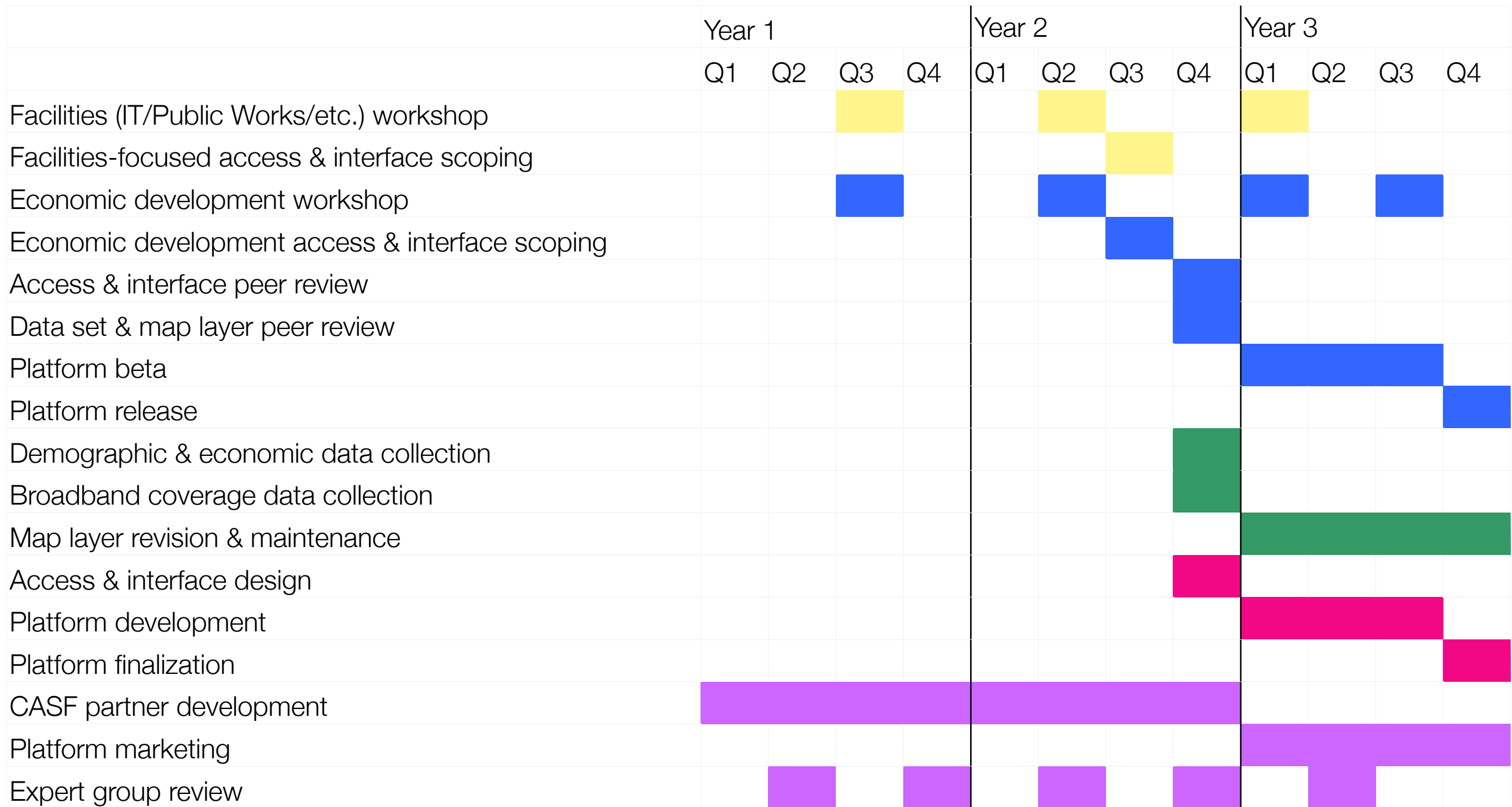
# Broadband asset database

Project 1

	Year 1				Year 2				Year 3			
	Q1	Q2	Q3	Q4	Q1	Q2	Q3	Q4	Q1	Q2	Q3	Q4
General plans review												
Development ordinances/policies survey												
Trench, conduit & wireless ordinances/policies survey												
Benchmark research and analysis												
Model policy drafting												
Model policy peer review												
Policy draft presentations & briefings												
Service provider briefings												
Policy map layer development												
Expert group review												

Model policy  
development

Project 2



# Deployment support platform

Project 3