

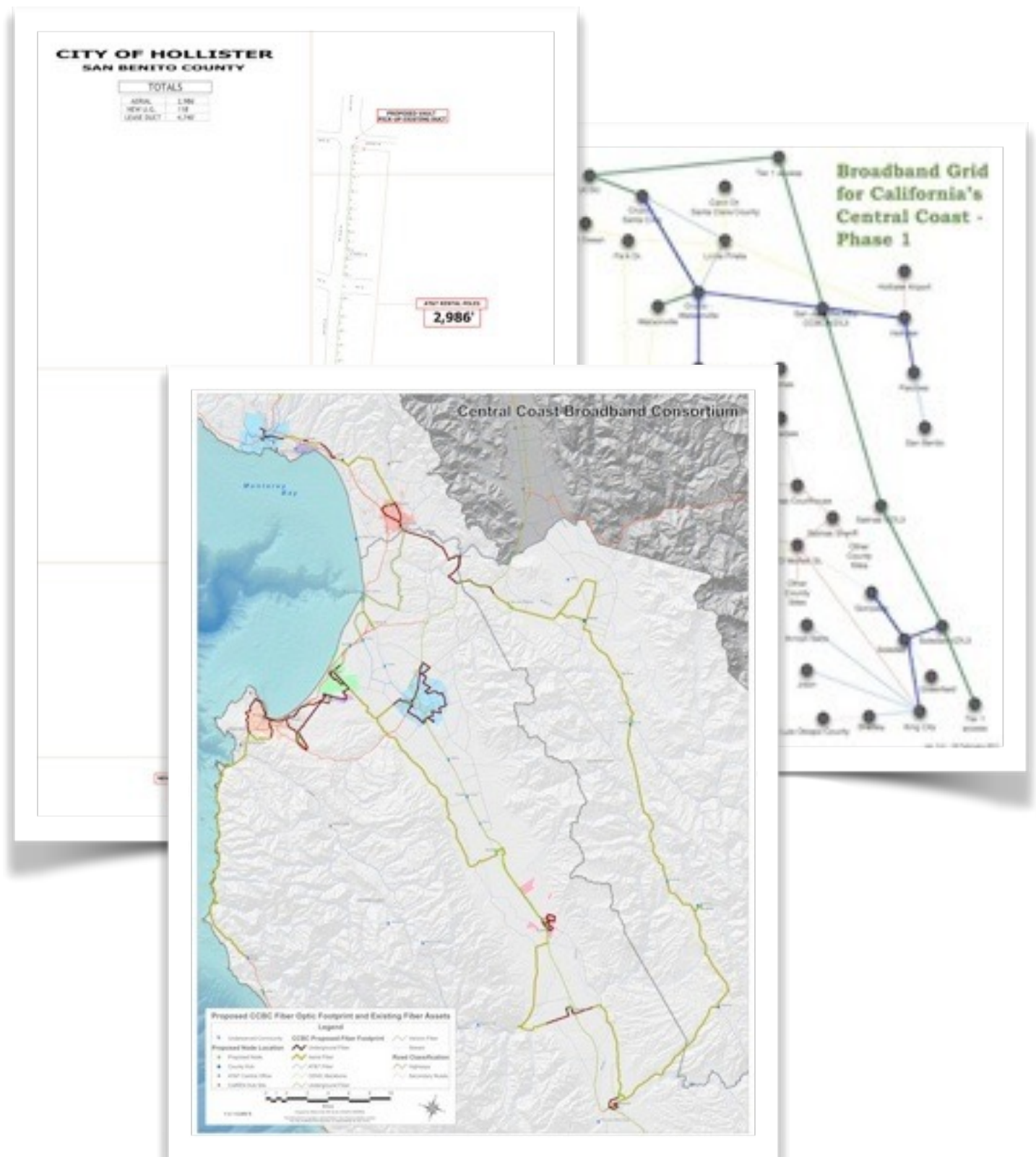


Central Coast Broadband Consortium

Broadband Policy and Projects

Central Coast Broadband Consortium 3 year project

- Priority is infrastructure and economic development.
- Funded by CPUC.
- Assist with grant applications.
- Broadband asset inventory.
- Model policy development.
- Continuing vision and roadmap for broadband development.





- Broadband requirements for new development, renovations
- Prioritizing broadband as a planning criterion
- Commercial/industrial vs. residential
- Anticipating and accommodating future needs



- Broadband conduit in CIP, public works, transportation projects
- Open trench policies
- Right of way and encroachment policies
- Conduit, pole, site leasing
- GIS integration



- Telecommuting
- Public services and digital inclusion
- Digital literacy and workforce development
- Systems interoperability, open data programs



- Wireless site, towers and antenna policies
- Environmental and aesthetic issues

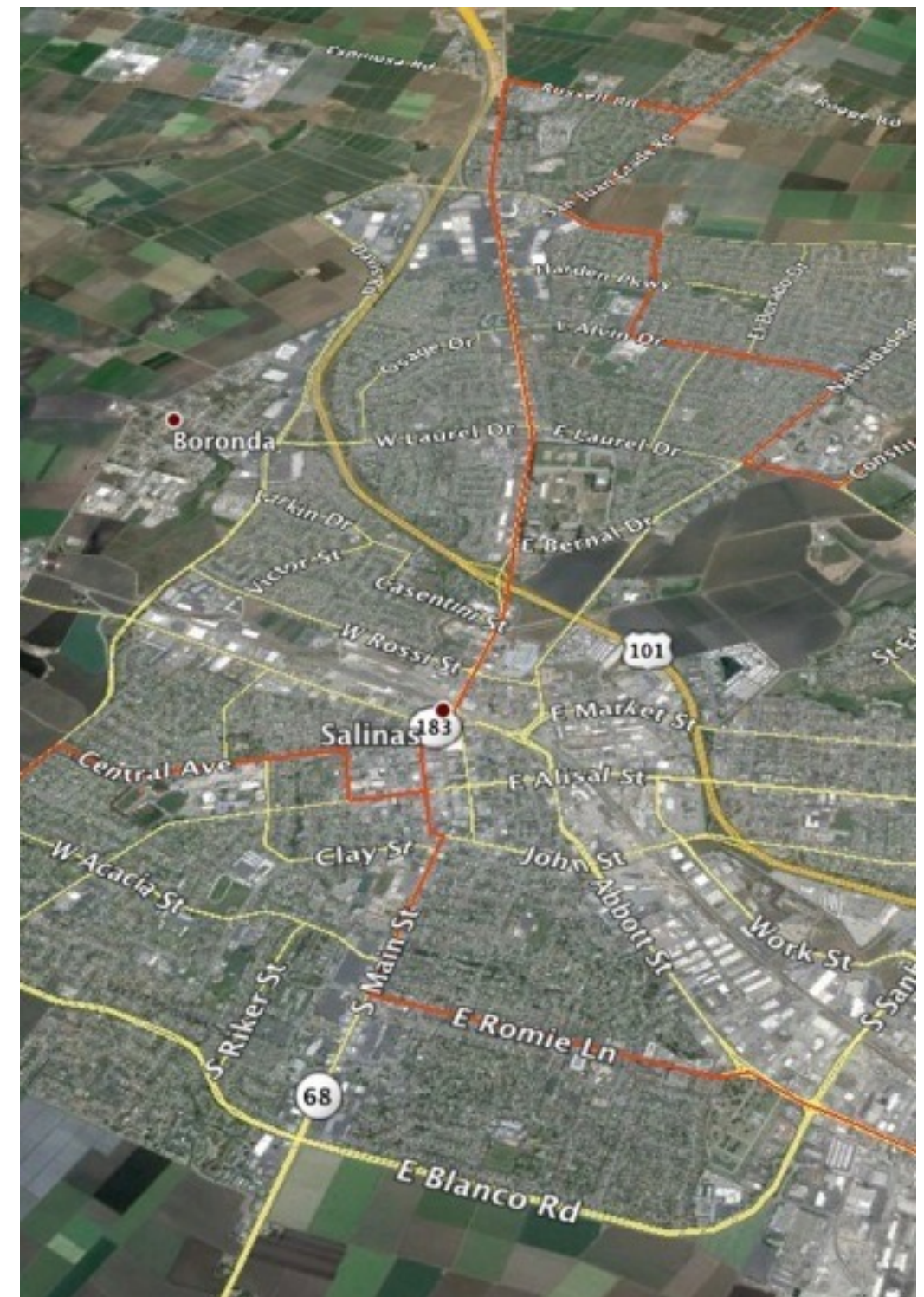
Core policies, practices identified and evaluated

Goal is to make broadband a routine policy consideration and planning element

Santa Cruz County adopting broadband policy

- Moving responsibility to Public Works.
- Broadband infrastructure subject only to encroachment process, like other utilities
- “Dig once”, infrastructure standards, shadow conduit.
- Model for region and state.





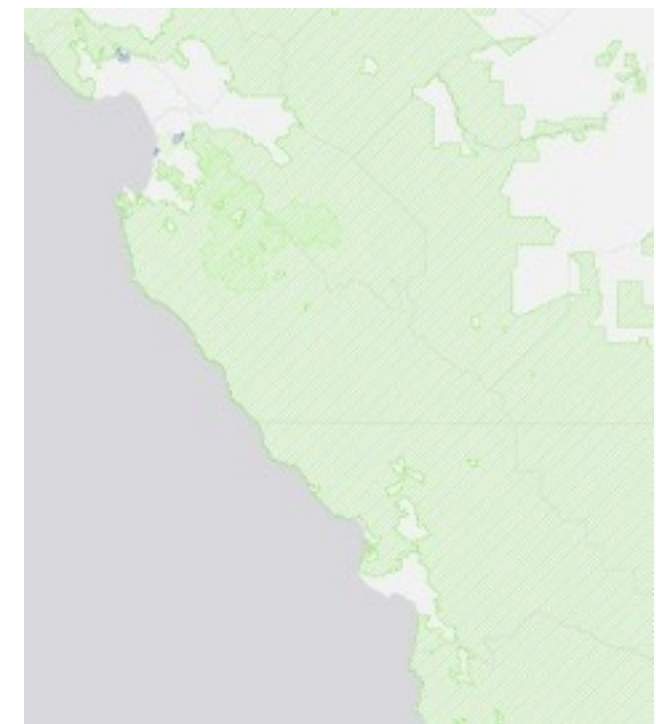
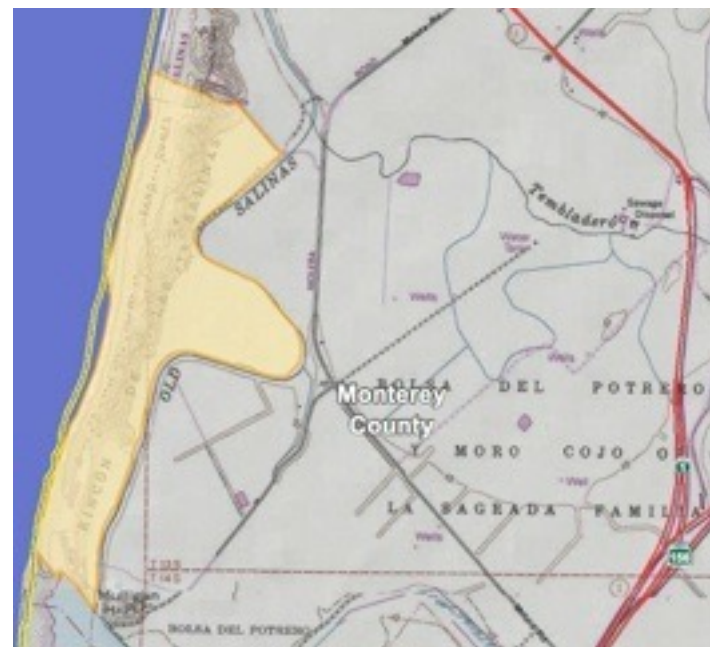
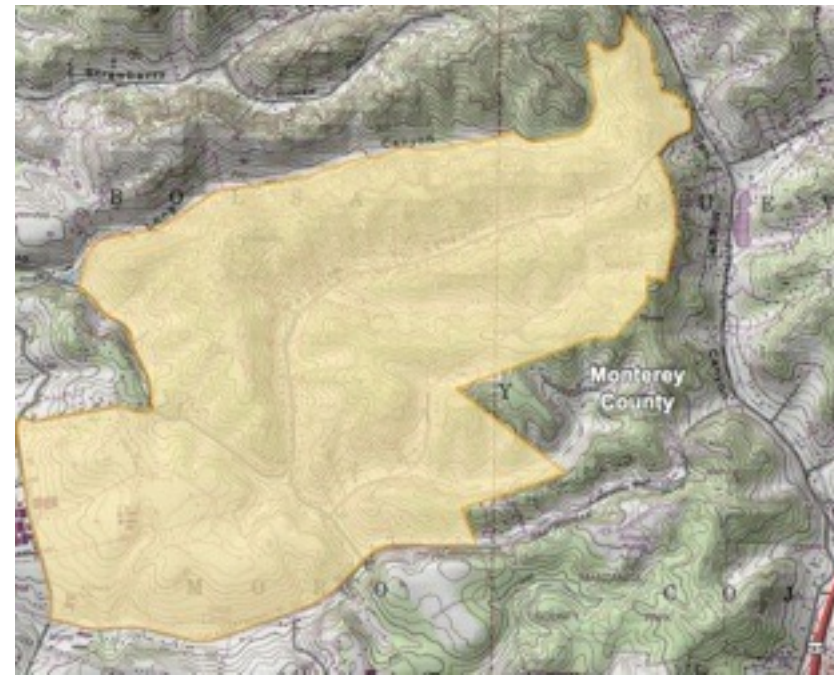
Mapping leads to muni
broadband projects

Watsonville replacing Charter
fiber, Salinas considering loop

The map illustrates the proposed high-speed rail alignment through the Salinas Valley. The route is shown as a blue line, beginning in Santa Cruz, passing through Watsonville, Castroville, Salinas, Chualar, Gonzales, and terminating at Soledad. The Salinas River is depicted in light blue, and the Salinas Valley is shaded in red and yellow. Major highways (CA-1, CA-25, CA-152, CA-101, US-101) and surrounding counties (Monterey, San Benito) are also labeled.

The map illustrates the proposed high-speed rail corridor through the Salinas Valley. The route is marked with a thick blue line, beginning in Santa Cruz, traversing Watsonville, Castroville, Salinas, Chualar, Gonzales, and terminating at Soledad. Key transportation features include State Routes CA-1, CA-25, CA-152, CA-101, and US-101. The Salinas River is depicted in light blue along the western edge. The map also delineates the boundaries of Monterey and San Benito counties. The Salinas Valley area is color-coded in red and yellow, likely representing different land use or ownership zones. The proposed rail alignment is shown as a straight line between major nodes, with some deviations to accommodate local infrastructure or terrain.

The map displays the Salinas River watershed in the Salinas Valley, California. The Salinas River is shown in blue, flowing from the north towards the south. The watershed area is highlighted in red, while the surrounding land is in yellow. Key locations labeled include Santa Cruz, Watsonville, Castroville, Salinas, Chualar, Gonzales, and Soledad. The map also shows the Salinas River flowing into the San Benito River and the Salinas River flowing into the Salinas River.



Six last mile projects for
three counties

Redshift in Chualar, Surfnet in
Santa Cruz & Monterey,
Pinnacles Telephone in San
Benito, Etheric region-wide



Central Coast
Broadband Consortium