

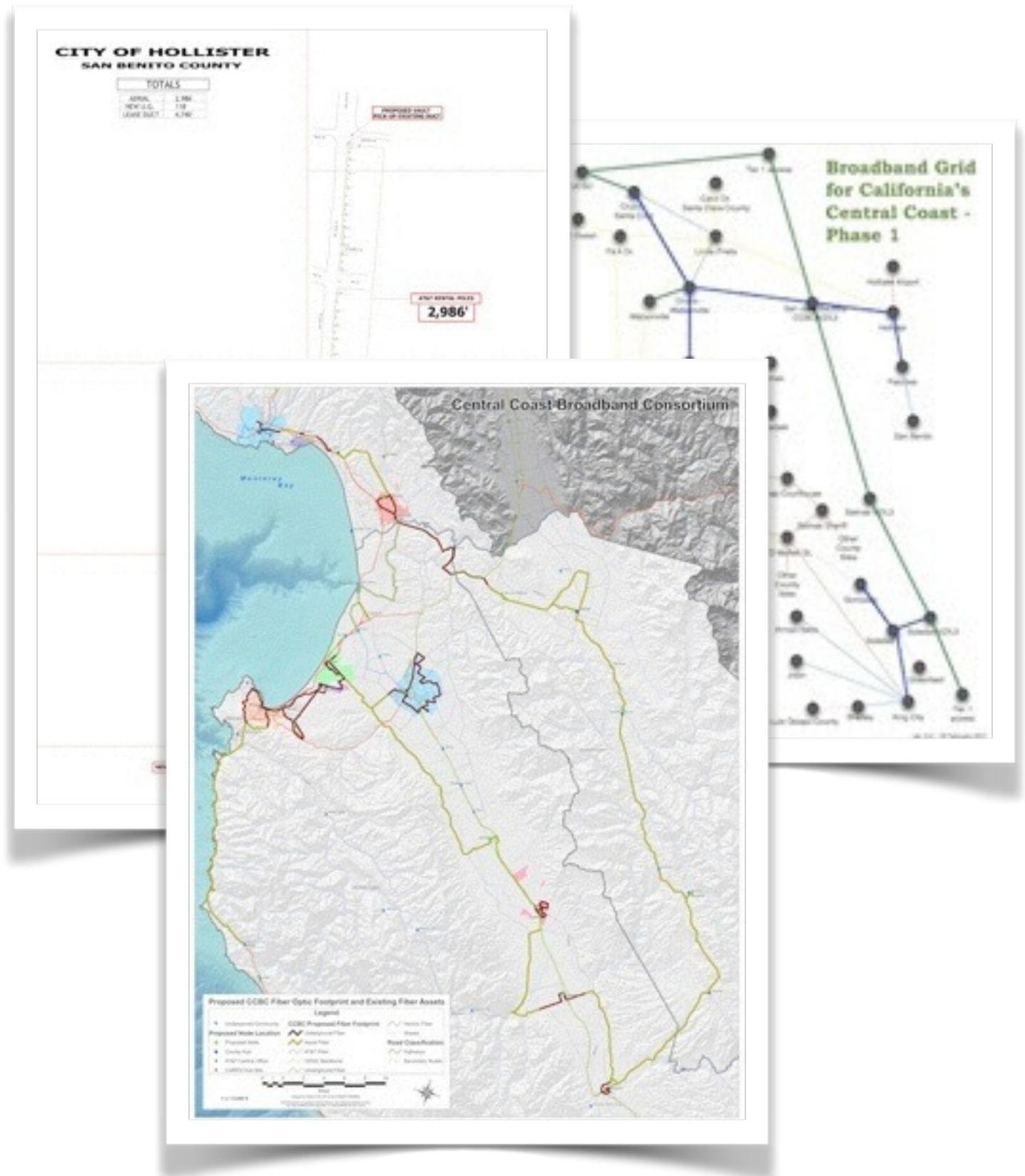
# Central Coast Regional Broadband Initiatives

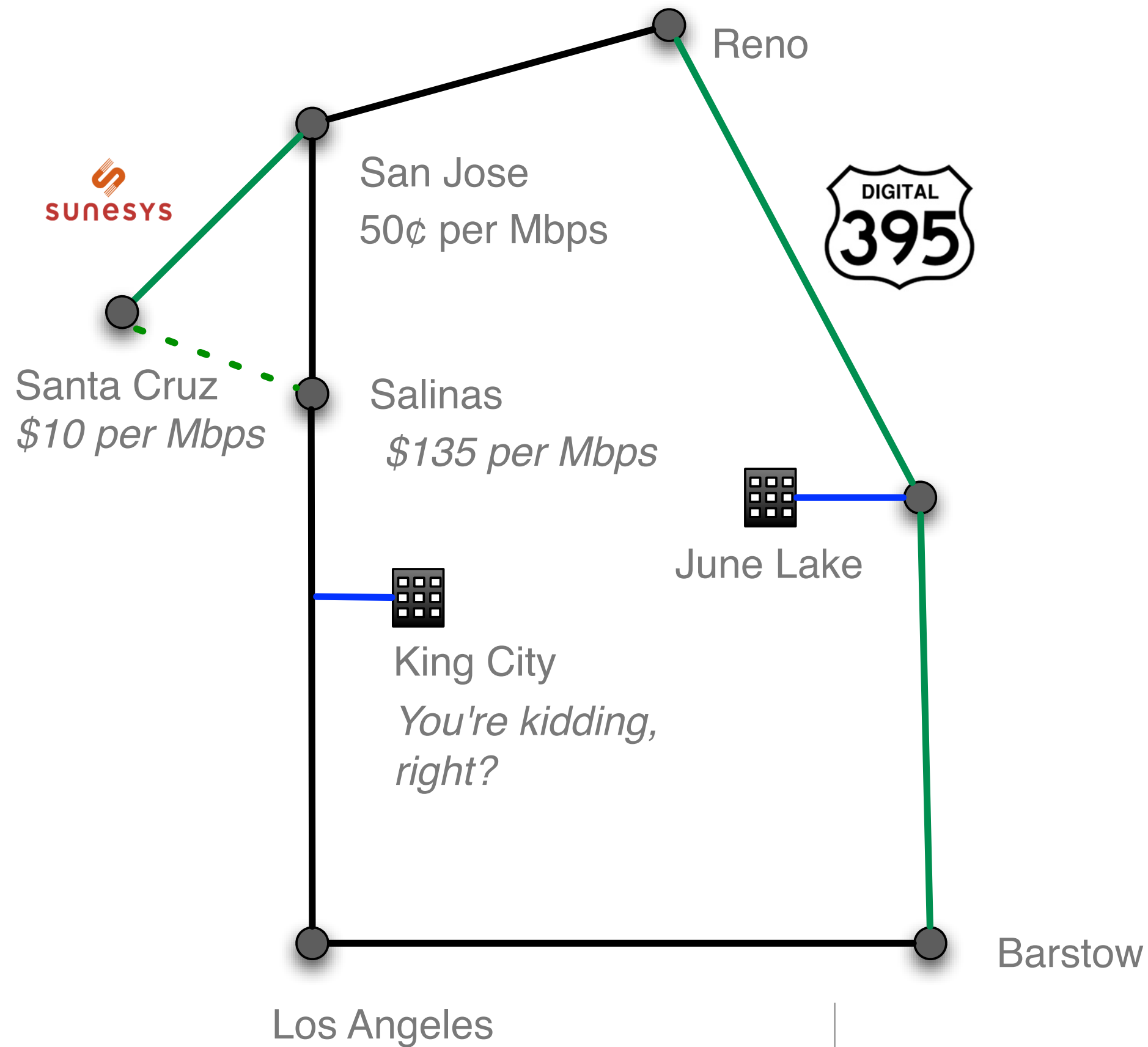
3 December 2013

---



- Priority is infrastructure and economic development.
- Funded by CPUC.
- Assist with grant applications.
- Broadband asset inventory.
- Model policy development.
- Continuing vision and roadmap for broadband development.



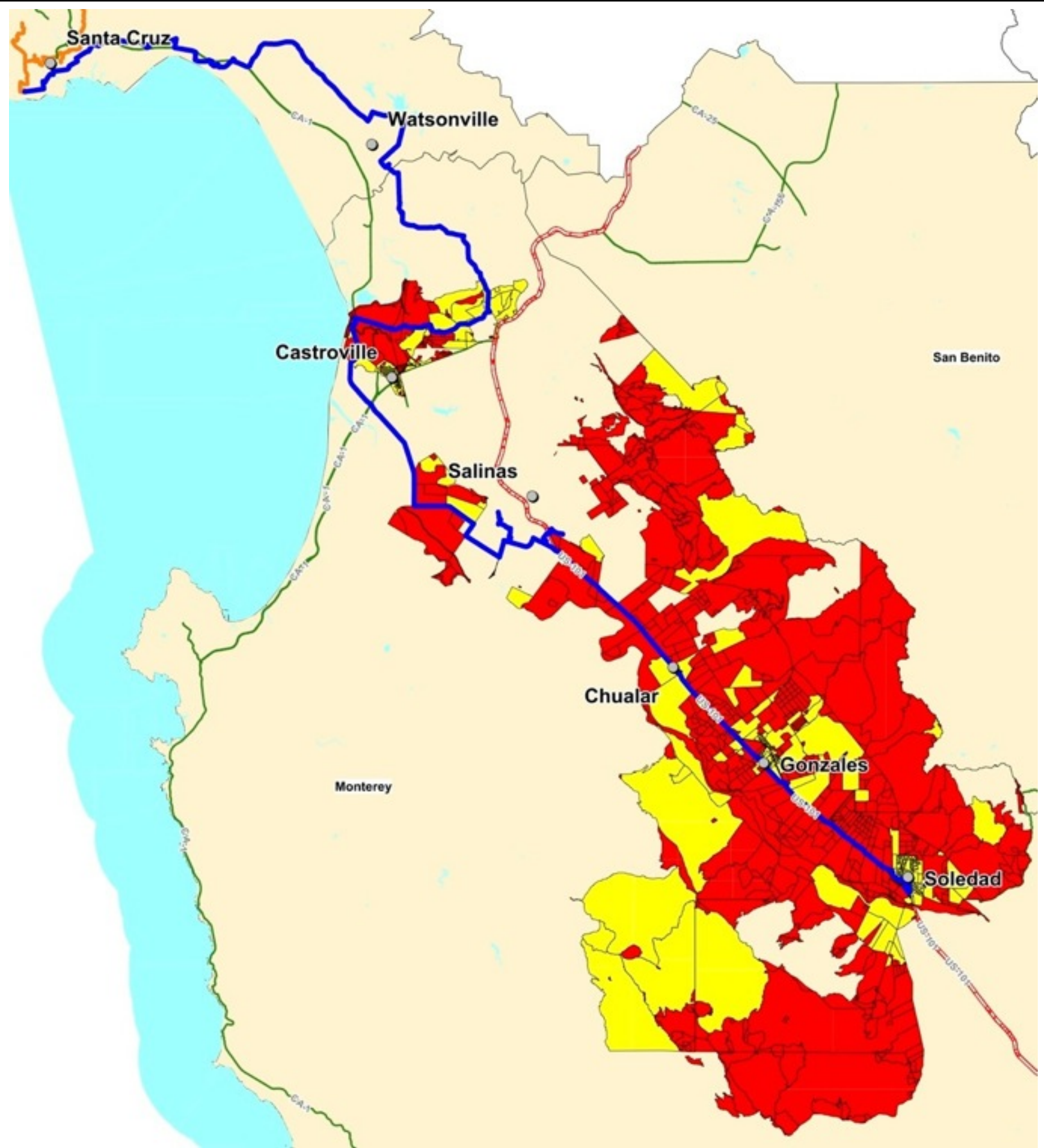


Distance & location matter

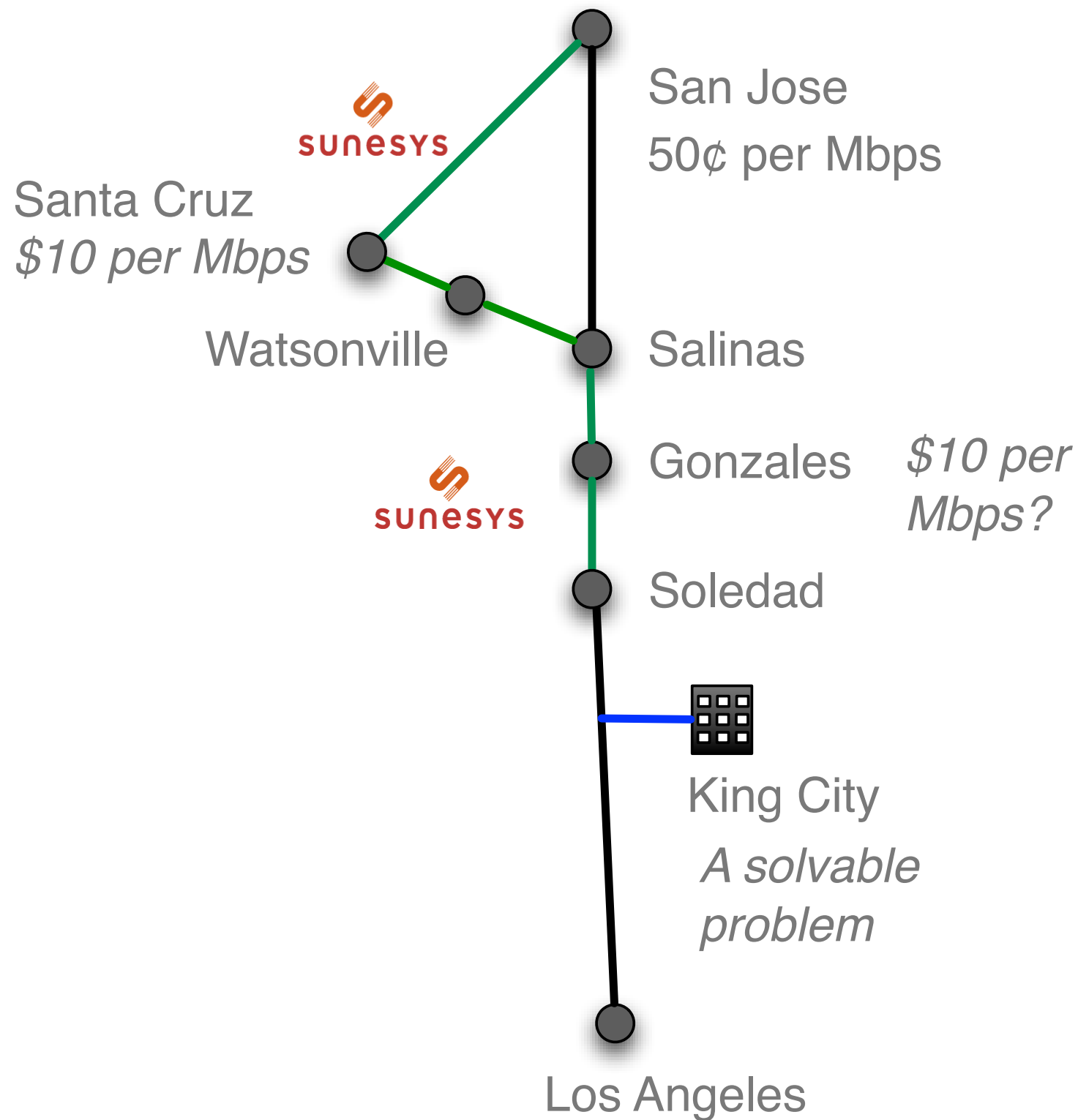
You mean the Internet isn't free?

# Sunesys-led middle mile project

Industrial grade 91-  
mile fiber route:  
Santa Cruz -  
Watsonville -  
Castroville - Salinas -  
Chualar - Gonzales -  
Soledad

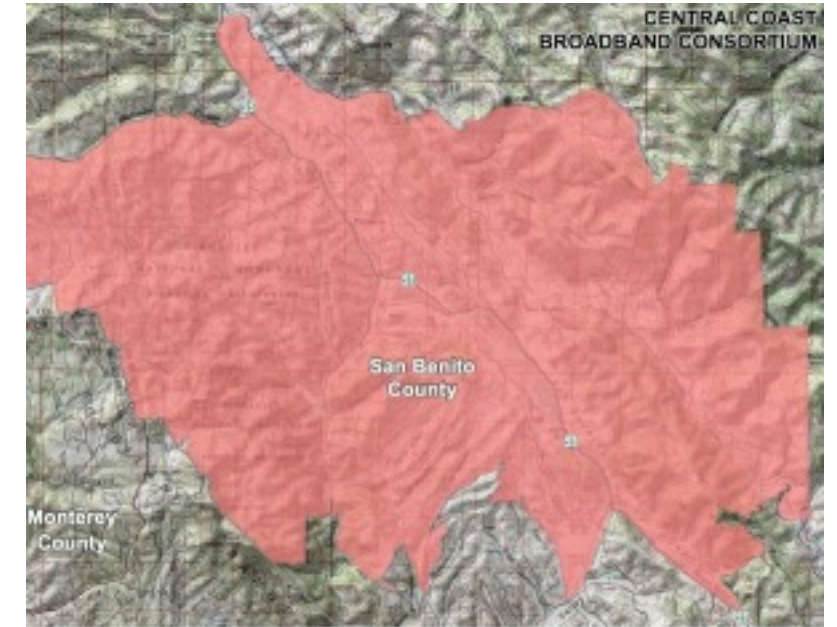
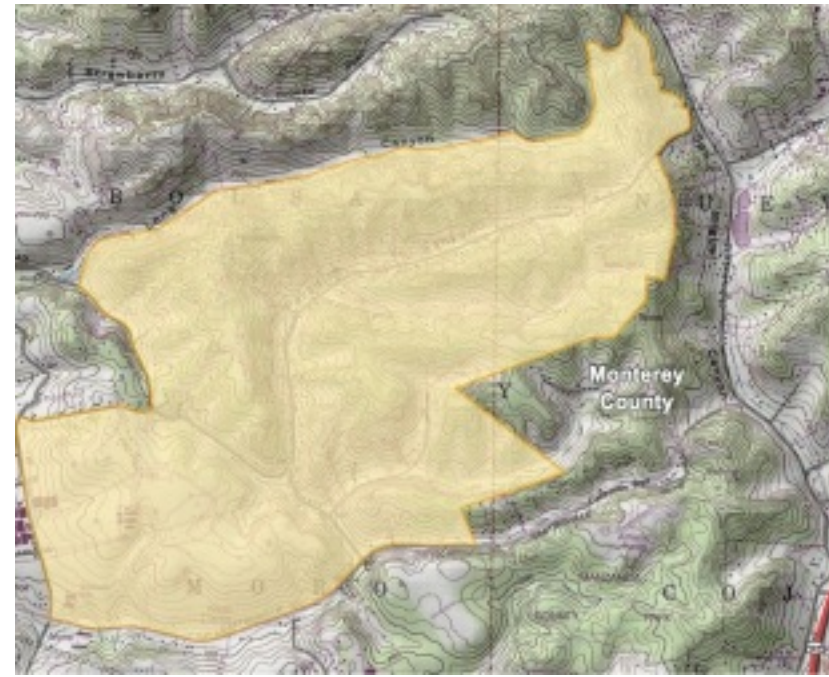






Accessible middle mile  
fiber lowers costs

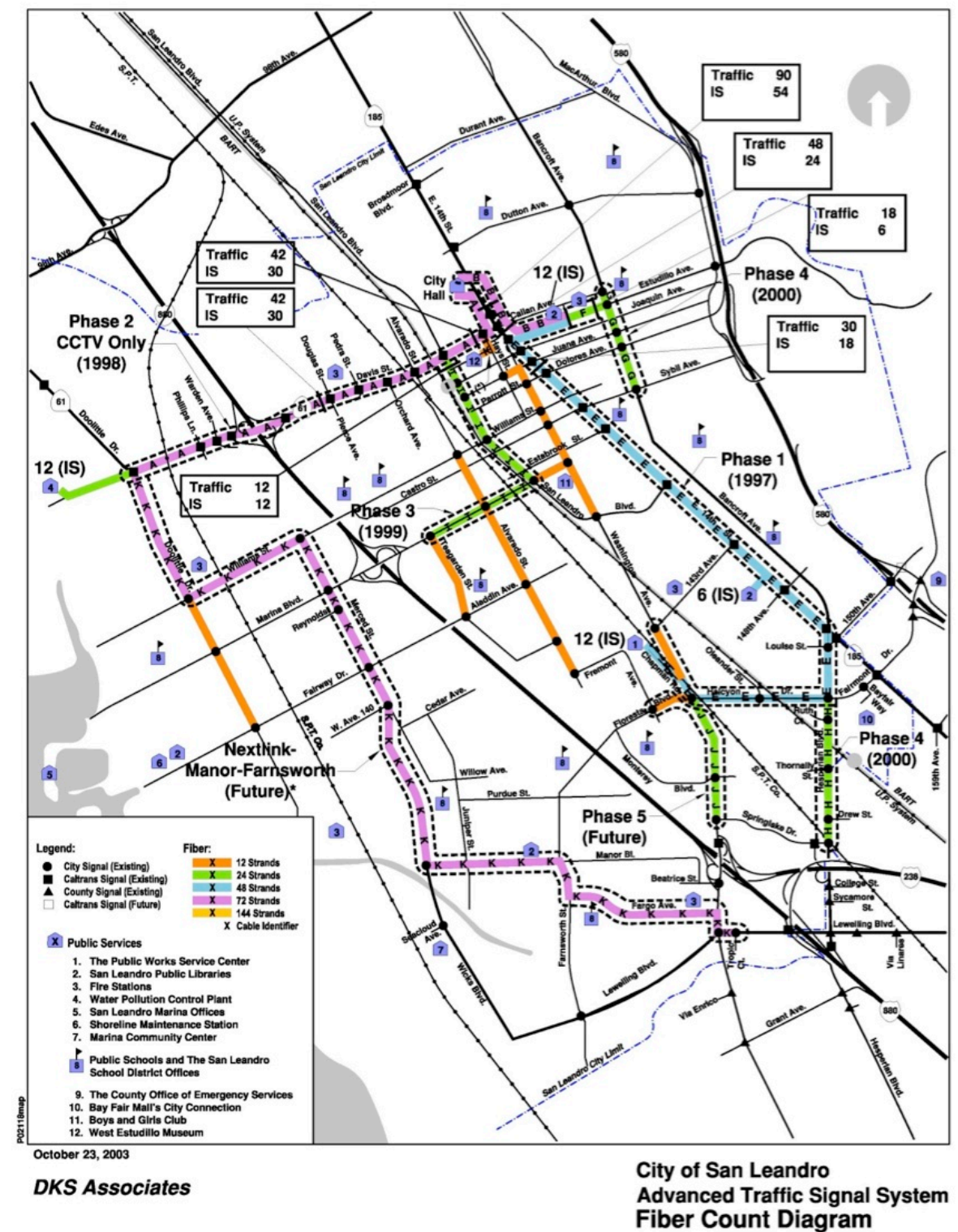
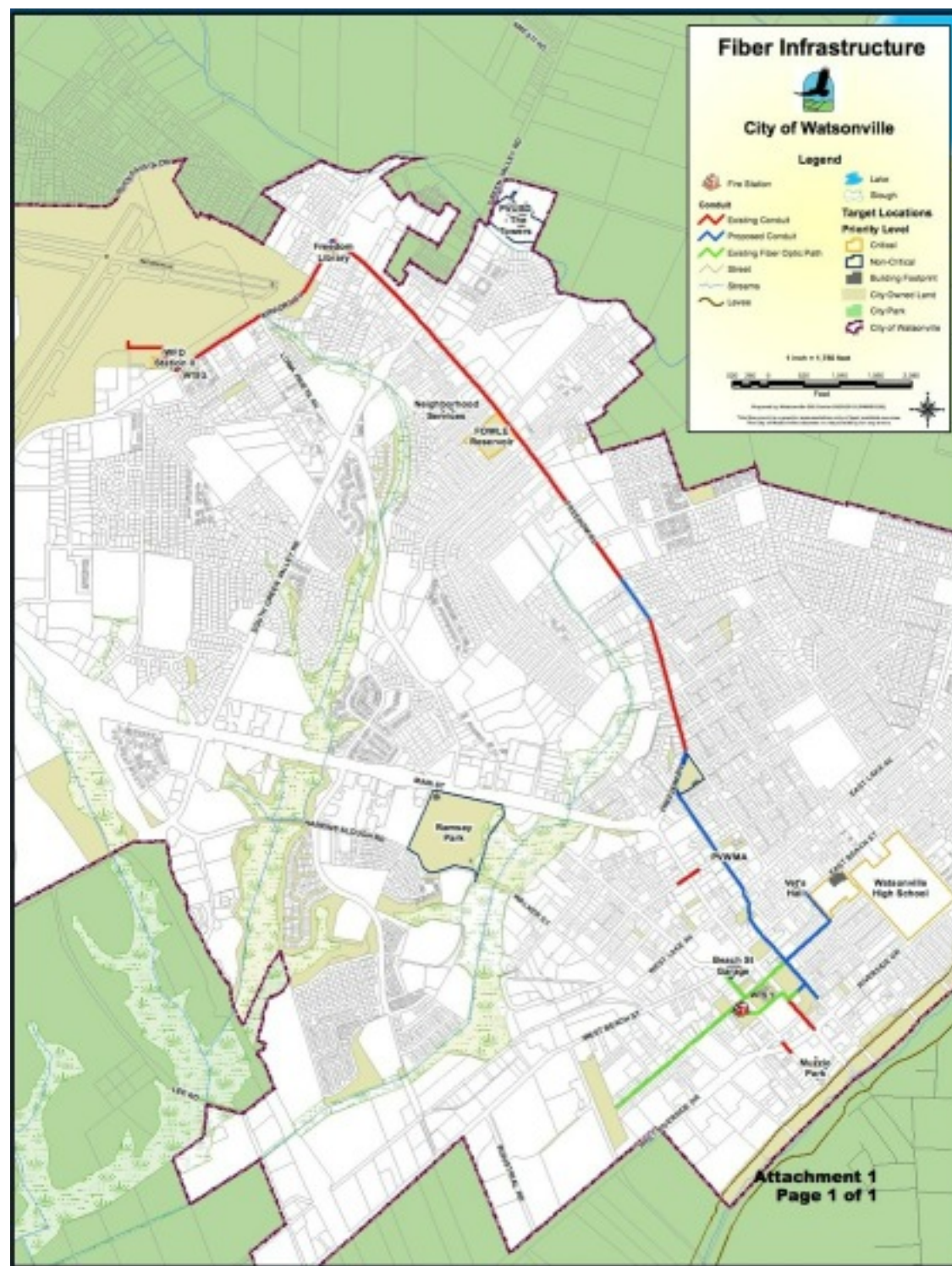
Otherwise, you're at the mercy  
of Comcast, Charter, AT&T



Six last mile projects for  
three counties

Redshift in Chualar, Surfnet in  
Santa Cruz & Monterey,  
Pinnacles Telephone in San  
Benito, Etheric region-wide





Mapping leads to muni  
broadband projects

Watsonville replacing Charter  
fiber



# Santa Cruz County adopting broadband policy

---

- Moving responsibility to Public Works.
- Broadband infrastructure subject only to encroachment process, like other utilities
- “Dig once”, infrastructure standards, shadow conduit.





- Municipal fiber projects in San Leandro, Palo Alto, Benicia, Salinas, Oakland.
  - Municipal wireless projects in Los Angeles, Oakland, Folsom, Lompoc.
  - Broadband policy development in Watsonville, Alameda, Morgan Hill
  - Community broadband system planning and implementation at The Villages in San Jose, Rancho Murieta near Sacramento, Corona.
  - Private ISP planning & funding in Monterey, Santa Cruz, San Benito, Nevada Counties.
- 



Planning, management and business development  
consulting for community broadband

Contact:

Steve Blum

+1-831-582-0700

steveblum@tellusventure.com

www.TellusVenture.com

---

