

# “A Connected Central Coast” CASF Consortia Grant Update

12 October 2011

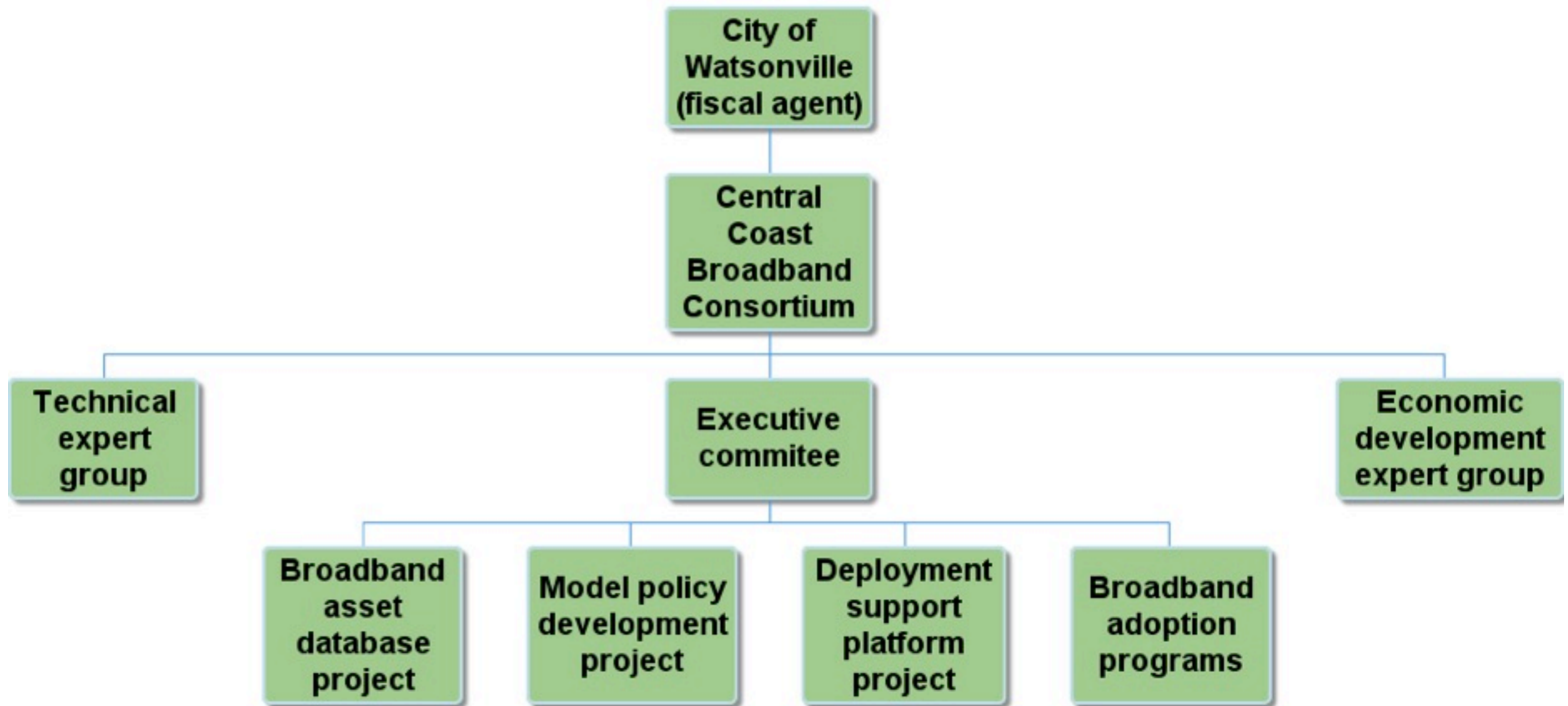
---



- **Primary project: more and better infrastructure**
  - Org chart
  - Budget
  - Project plan
- **Deliverables**
  - Maps & database of broadband assets
  - Deployment-friendly model policy bank
  - Framework for carrier incentives
  - Infrastructure & economic development resources
- **Adoption programs round out application**

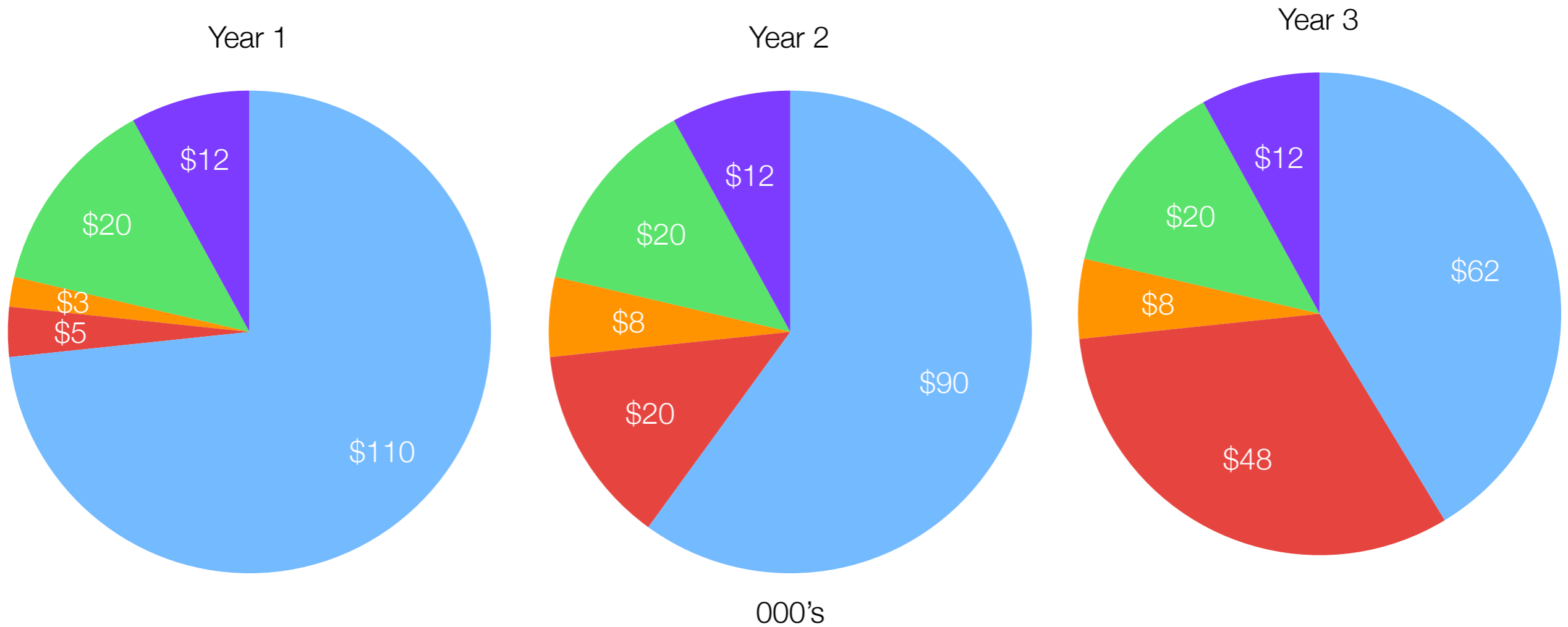
Create common tools

Applicable to policies, priorities,  
programs of individual agencies

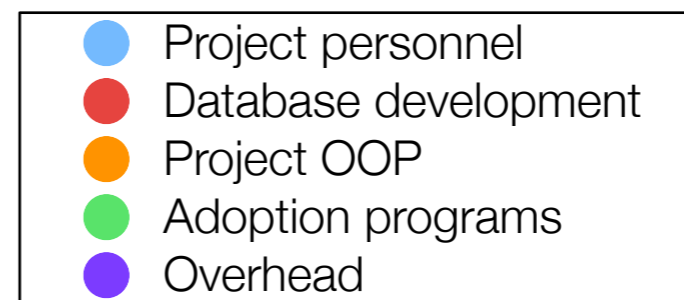


3-part deployment project &  
2 adoption programs

“A Connected Central Coast”




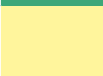

## Core grant-funded budget \$150K per year



	Year 1	Year 2	Year 3	Total
CASF Consortia Grant	\$150,000	\$150,000	\$150,000	\$450,000
CASF summit travel supplement	\$10,000	\$10,000	\$10,000	\$30,000
CCBC member in-kind contributions	\$57,250	\$76,750	\$76,750	\$210,750
<b>Total</b>	<b>\$217,250</b>	<b>\$236,750</b>	<b>\$236,750</b>	<b>\$690,750</b>



000's

Economic development analyst	
GIS analyst	
Infrastructure specialist	
Network specialist	
Database developer	
Executive committee/expert groups	

# Responsibilities & budget

Contracted & contributed personnel

	Year 1				Year 2				Year 3			
	Q1	Q2	Q3	Q4	Q1	Q2	Q3	Q4	Q1	Q2	Q3	Q4
Conduit inventory	Yellow											
Wireless site inventory			Yellow									
Existing right of way inventory				Yellow								
Pole route survey				Yellow	Yellow							
Fiber route & node survey	Orange											
Conduit validation		Orange										
Wireless facilities inventory				Orange	Orange							
Service provider briefings			Orange		Orange							
Map layer collection & review	Green											
Map layer development			Green									
Database architecture				Pink	Pink							
Database development						Pink						
Information access policy development	Purple											
Expert group review		Purple		Purple		Purple		Purple		Purple		

# Broadband asset database

Project 1

	Year 1				Year 2				Year 3			
	Q1	Q2	Q3	Q4	Q1	Q2	Q3	Q4	Q1	Q2	Q3	Q4
General plans review	█											
Development ordinances/policies survey	█											
Trench, conduit & wireless ordinances/policies survey		█										
Benchmark research and analysis			█	█								
Model policy drafting			█	█								
Model policy peer review					█							
Policy draft presentations & briefings						█	█	█				
Service provider briefings							█		█		█	
Policy map layer development							█					
Expert group review		█		█		█		█		█		

# Model policy development

Project 2

	Year 1				Year 2				Year 3				
	Q1	Q2	Q3	Q4	Q1	Q2	Q3	Q4	Q1	Q2	Q3	Q4	
Facilities (IT/Public Works/etc.) workshop			Yellow			Yellow			Yellow				
Facilities-focused access & interface scoping							Yellow						
Economic development workshop			Blue			Blue			Blue		Blue		
Economic development access & interface scoping							Blue						
Access & interface peer review								Blue					
Data set & map layer peer review								Blue					
Platform beta									Blue	Blue	Blue		
Platform release												Blue	
Demographic & economic data collection								Green					
Broadband coverage data collection								Green					
Map layer revision & maintenance									Green	Green	Green	Green	
Access & interface design								Pink					
Platform development									Pink	Pink	Pink		
Platform finalization												Pink	
CASF partner development		Purple				Purple							
Platform marketing										Purple	Purple	Purple	
Expert group review		Purple		Purple		Purple		Purple		Purple			

# Deployment support platform

Project 3



- Nominal timeline
  - Batched application review - end of October
  - Draft resolution - 1 November
  - Comments - throughout November
  - Commission vote - 1 or 15 December
  - Funding - 1st Quarter 2011
- ***Surprises always possible***

Application status

“Piece of cake”

# “A Connected Central Coast” CASF Consortia Grant Update

12 October 2011

---



Contact:

Steve Blum

Tellus Venture Associates

+1-831-582-0700

[steveblum@tellusventure.com](mailto:steveblum@tellusventure.com)

[www.tellusventure.com](http://www.tellusventure.com)