



# Central Coast Broadband Consortium

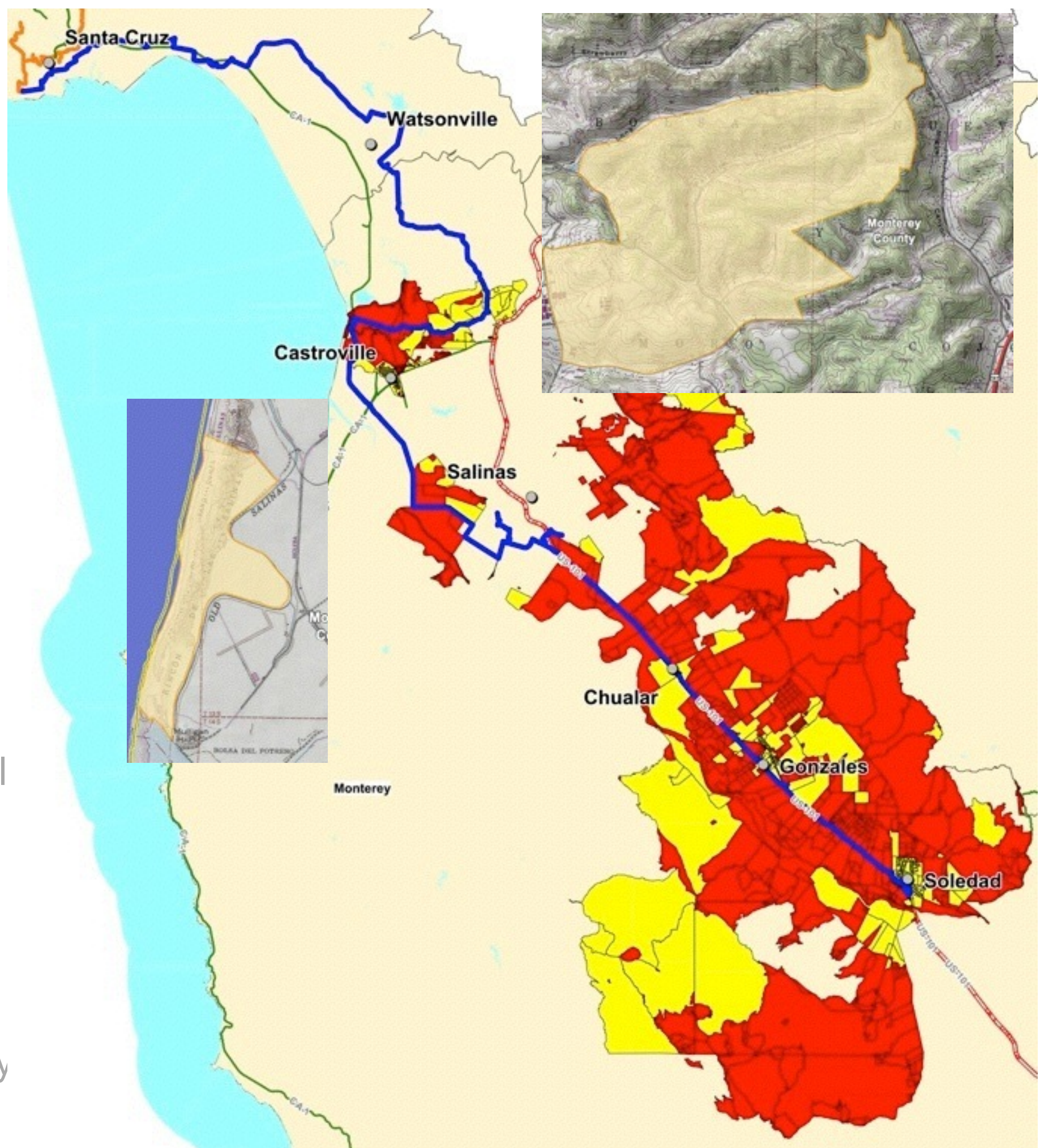
## Broadband Projects

# UCSCC-led middle mile project

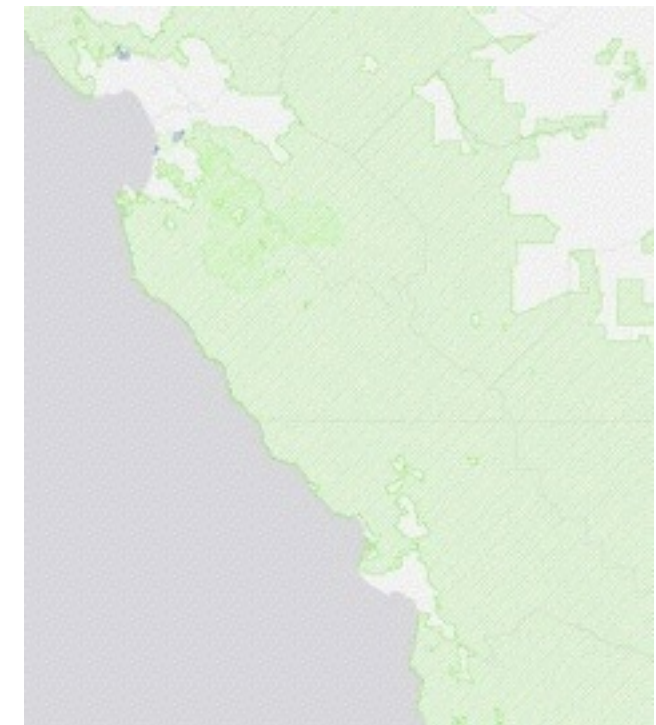
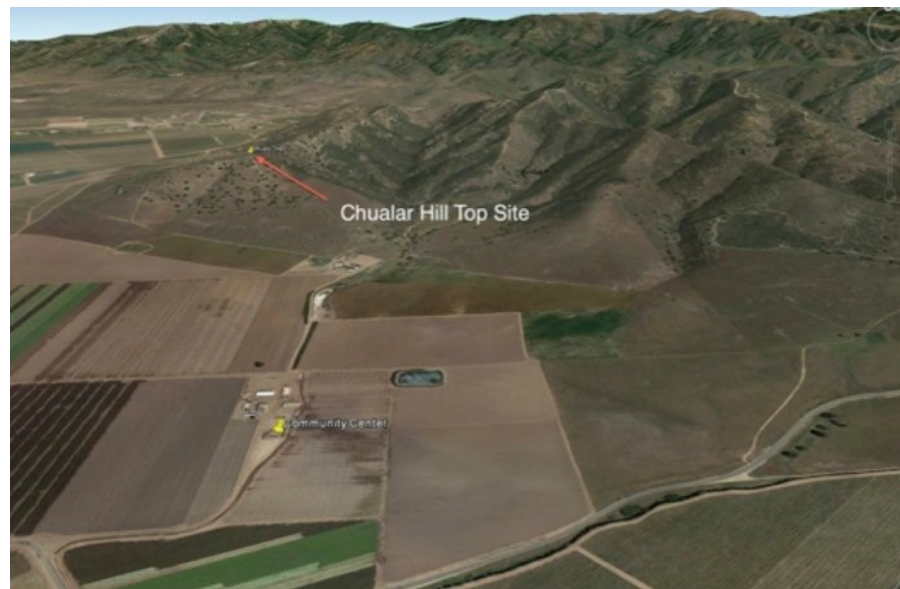
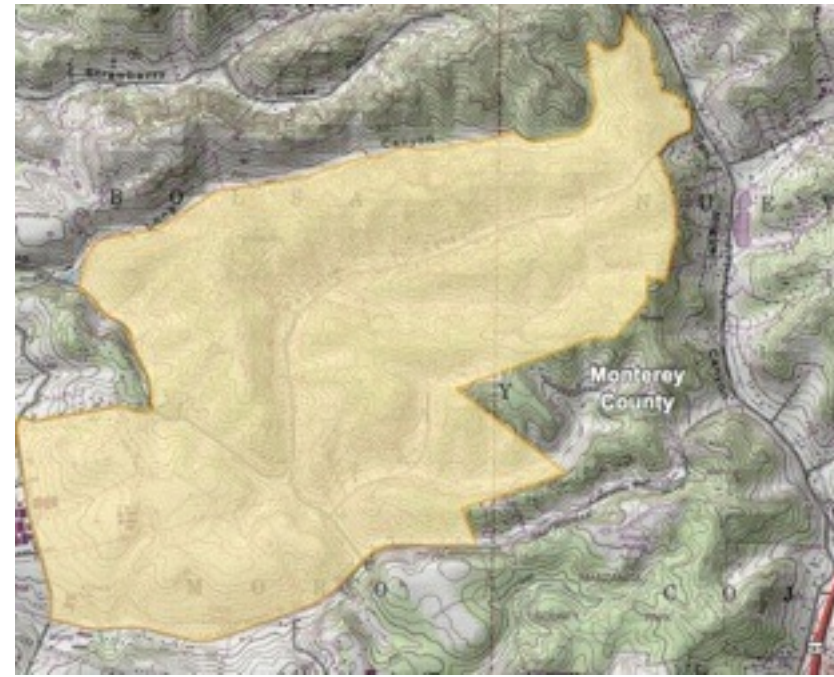
Industrial grade fiber  
route:

Santa Cruz -  
Watsonville - Castrovill  
- Salinas - Chualar -  
Gonzales - Soledad

*Plus*, last mile fiber  
projects by Surfnet in  
north Monterey County



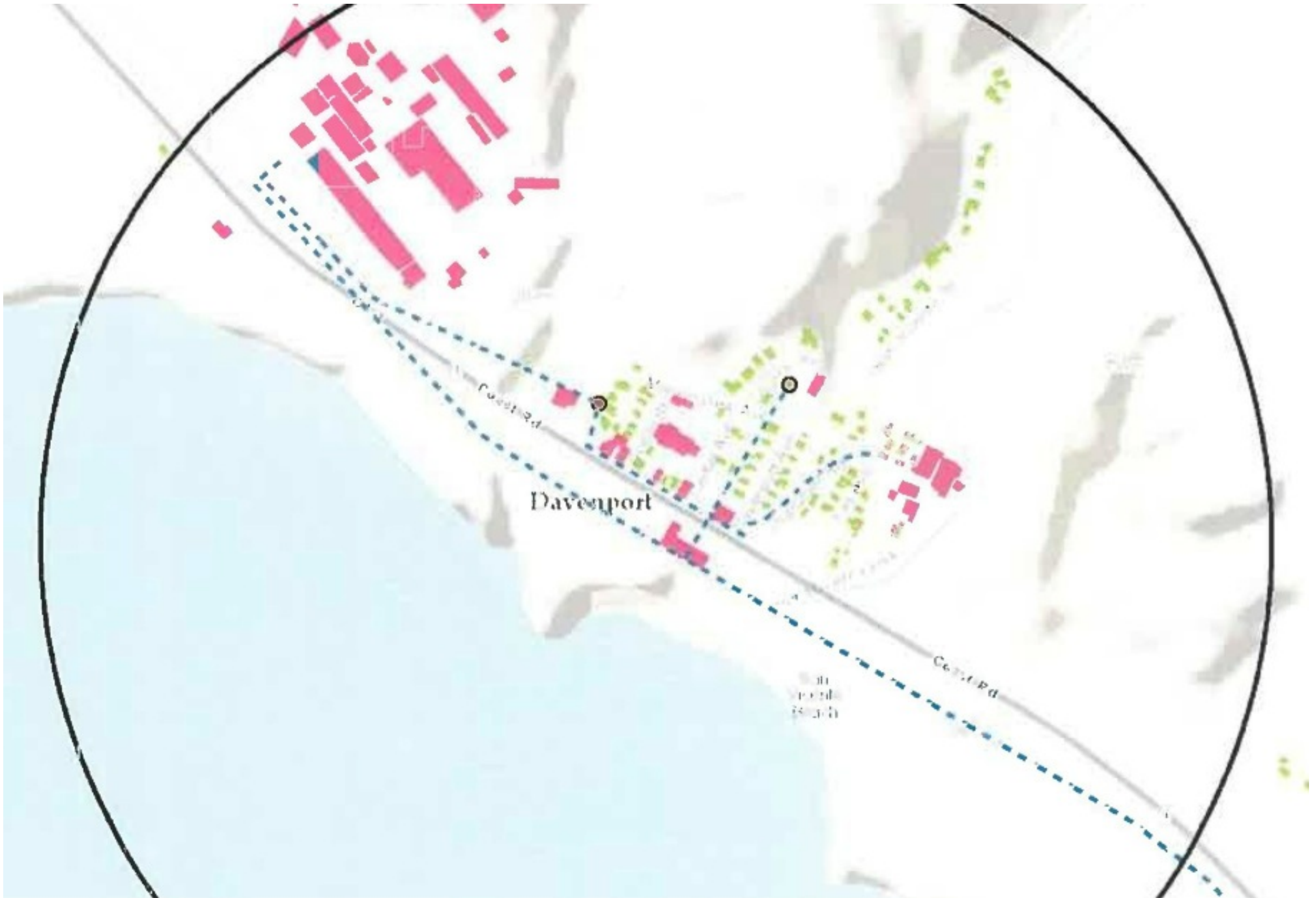




Grant funding sought for 8 last mile projects in 3 counties

Redshift, DeNovo in Salinas Valley,  
Surfnet in Santa Cruz & Monterey,  
Pinnacles Telephone in San Benito,  
Etheric region-wide

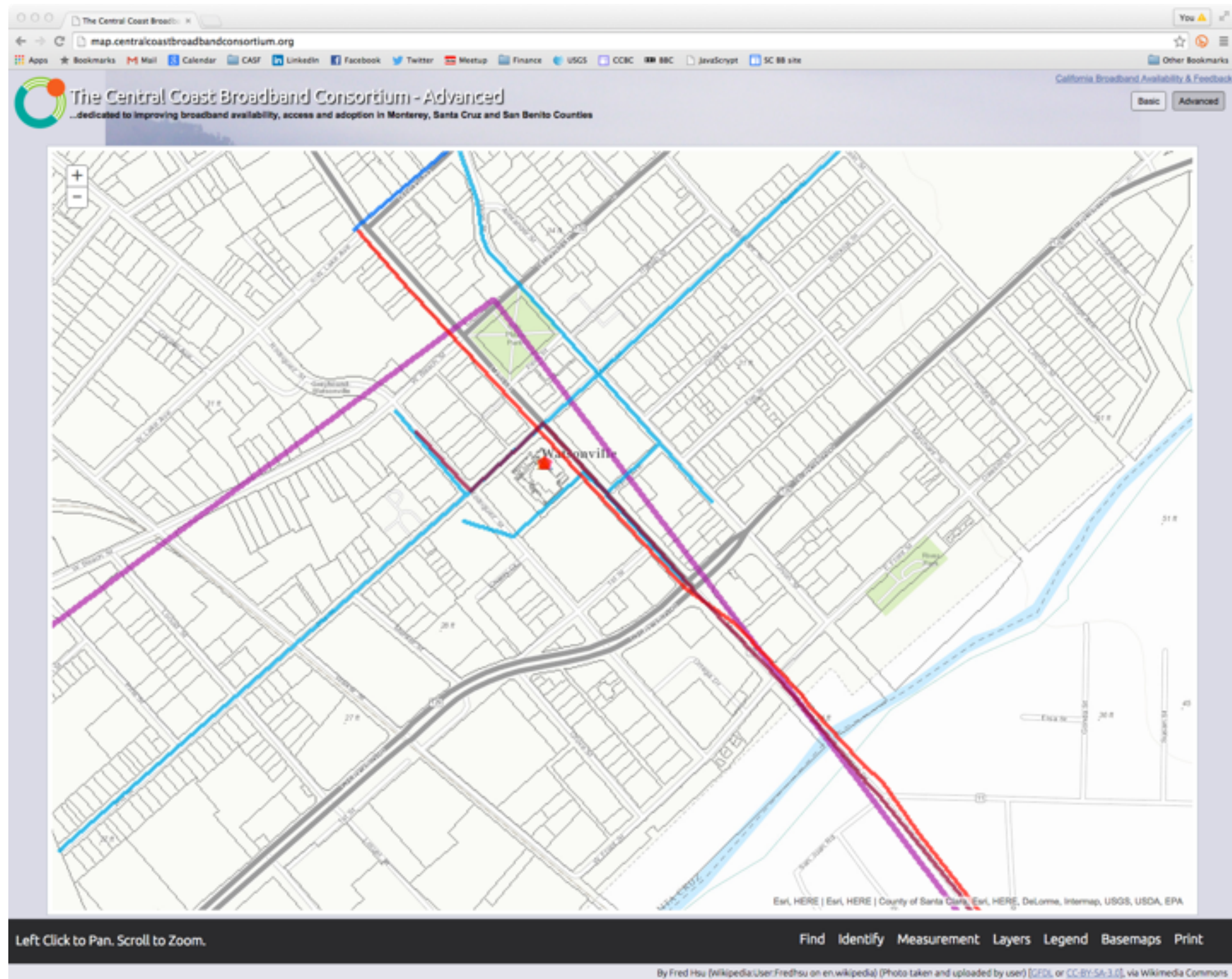




Santa Cruz County has a county fiber development plan

Targets economic development priority areas

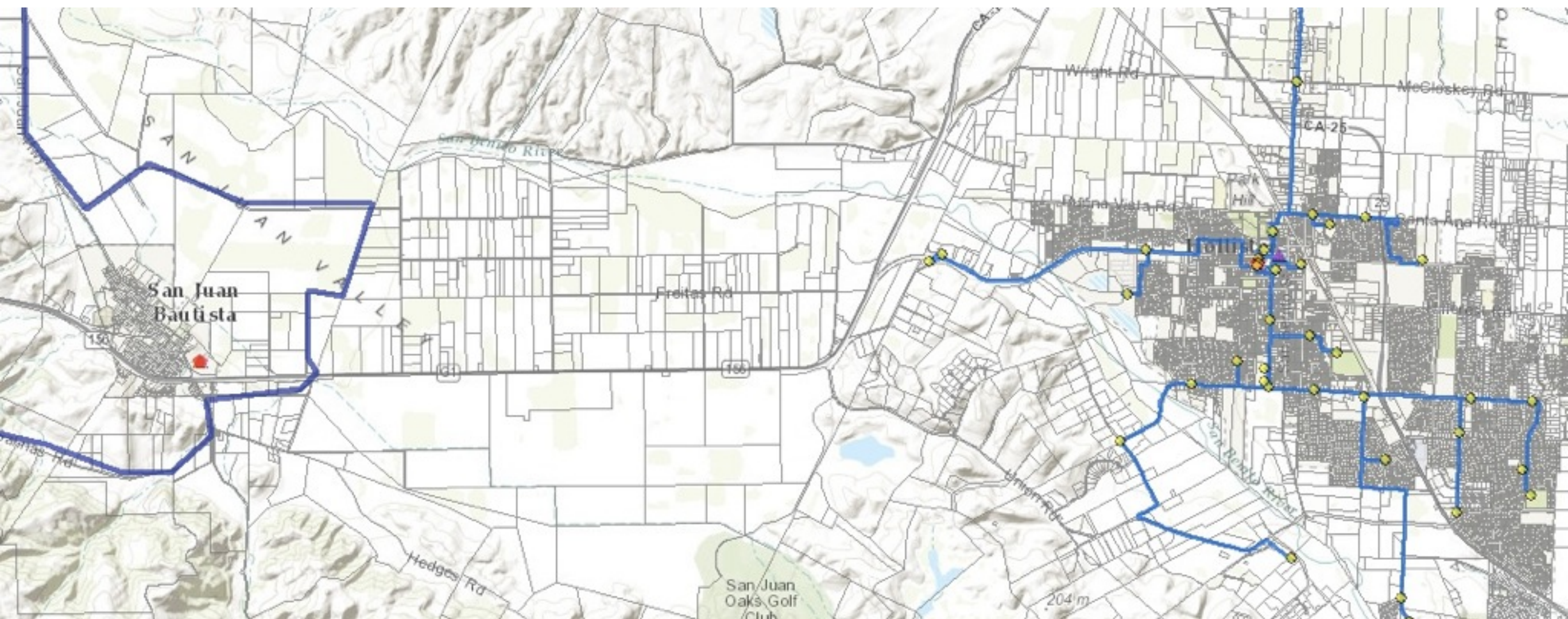




Watsonville built a municipal  
dark fiber network

Similar to projects in Palo Alto,  
San Leandro and Santa Clara





Hollister & San Benito County  
co-op fiber & conduit build

Initially for institutional use but  
available for economic  
development





City of Santa Cruz might back  
fiber to the home system

City council scheduled to vote  
on negotiating agreement next  
Tuesday





# Central Coast Broadband Consortium

## Broadband Policy



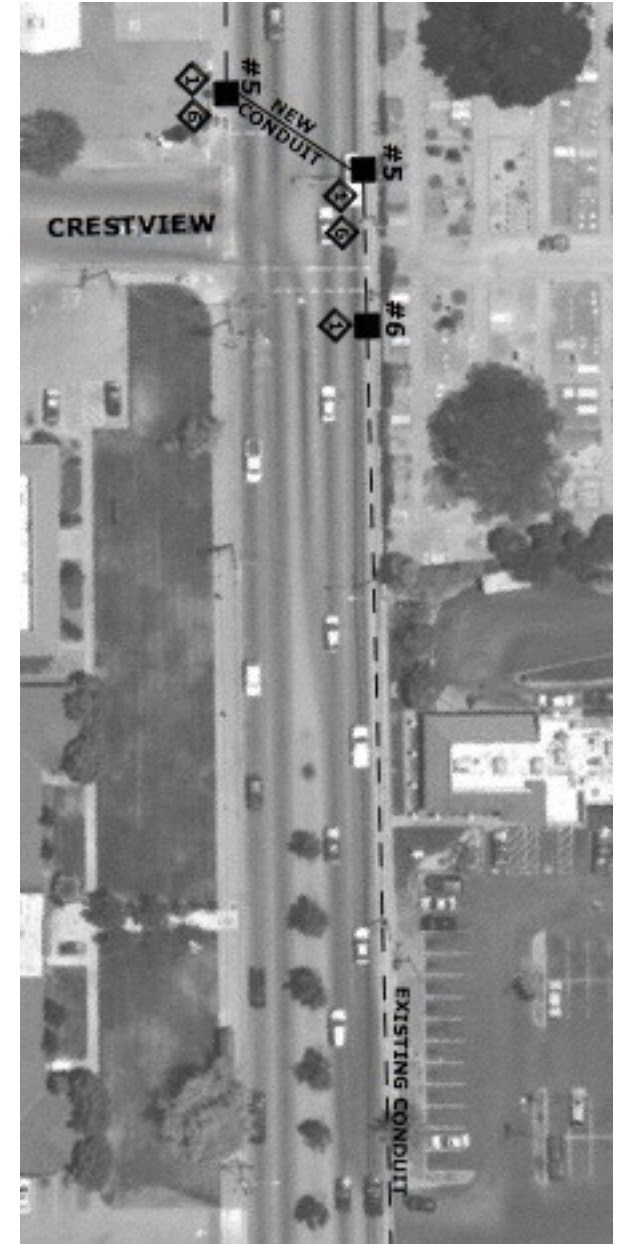
- Santa Cruz – City and County – requiring inclusion of telecoms facilities in public works projects
- Salinas including conduit in street projects
- Hollister has muni fiber/conduit system
- San Francisco has comprehensive draft policy for notification of potential interested utilities, including broadband
- Berkeley requires regular coordination among utilities, city and others doing excavation work



## Open trench policies

Two approaches: notification & inclusion

- Representative Anna Eshoo carrying a bill requiring federal highway projects include conduit
- Central Coast Broadband Consortium has developed draft policies for local and state consideration
- Watsonville has muni dark fiber network
- Hollister has muni fiber/conduit system
- GIS logging is vital
  - Lots of lost conduit in the ground
  - Watsonville built muni fiber network out of bits & pieces
  - Lit San Leandro was sparked by serendipity, but luck is a bad basis for planning
- Require electronic submission of plans & as-builts



## Shadow conduit & GIS

Local agency installs conduit prospectively



- Santa Cruz County giving sole control over telecoms projects to public works department, eliminating planning department from process.
- Allow the installation within public right of ways, subject only to 'time, place and manner' of access, through encroachment permit process
  - Conforms to state, federal law
- Work on standards and practice is key to securing buy in from civil engineers
- Engagement of public works people is vital
- Big projects bring permit surges



## Permitting

Public works departments starting to take ownership of fiber & conduit projects



- City of Brentwood started requiring conduit 15 years ago
  - Now has an independent fiber-to-the-home project underway
- City of Loma Linda has 70-page spec for structured wiring in new construction and major remodels
  - Requires connections to city's fiber network
  - No requirement to buy service from city
- City of San Leandro has similar policy for commercial property

## Construction standards



Treats broadband connections like other utilities



- Local agencies have some leeway in managing tower and antenna sites, but not much power to say “no”
- FCC “shot clock” gives local government 3 to 5 months to approve applications
- AB57 would add *deemed granted* presumption
- FCC rules require local government to approve modifications, within certain limits.
- Local agencies cannot regulate wireless facilities on the basis of tin foil hat fears.
- Clear, written policies are the best foundation for exercising what local control is possible

State, FCC squeezing local role in wireless planning & approval



Best way to increase wireless capacity is to build more fiber

- Telecommuting
- Public services and digital inclusion
- Digital literacy and workforce development
- Systems interoperability, open data programs



Other policy options

Demand-side considerations



# Questions?

Maps make the case

[CentralCoastBroadbandConsortium.org](http://CentralCoastBroadbandConsortium.org)





# Central Coast Broadband Consortium

Back up slides





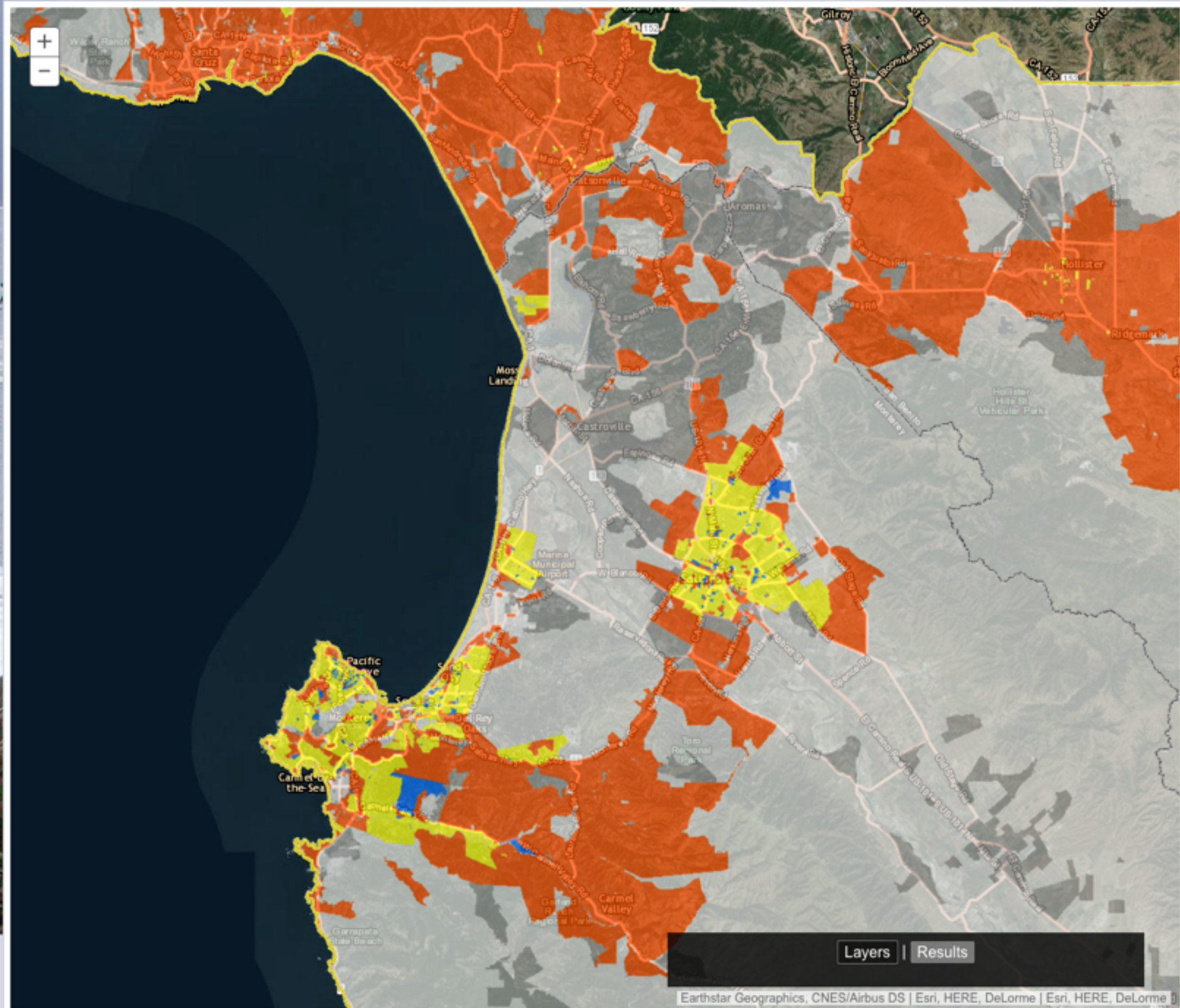
# The Central Coast Broadband Consortium - Advanced

...dedicated to improving broadband availability, access and adoption in Monterey, Santa Cruz and San Benito Counties

[California Broadband Availability & Feedback](#)

Basic

Advanced





# Wireline Service Grades for the City of Salinas

## Legend

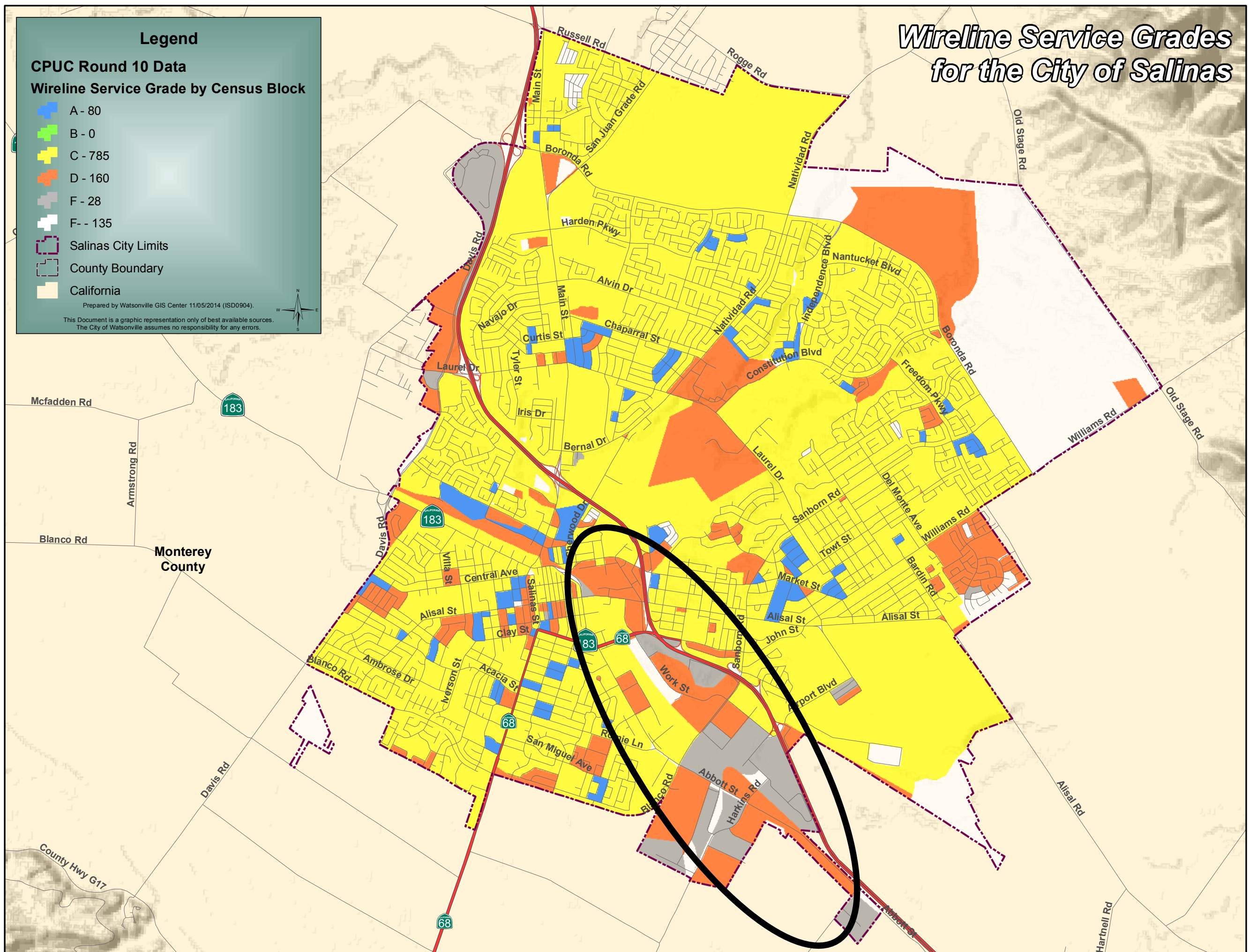
### CPUC Round 10 Data

#### Wireline Service Grade by Census Block

- A - 80
- B - 0
- C - 785
- D - 160
- F - 28
- F - 135
- Salinas City Limits
- County Boundary
- California

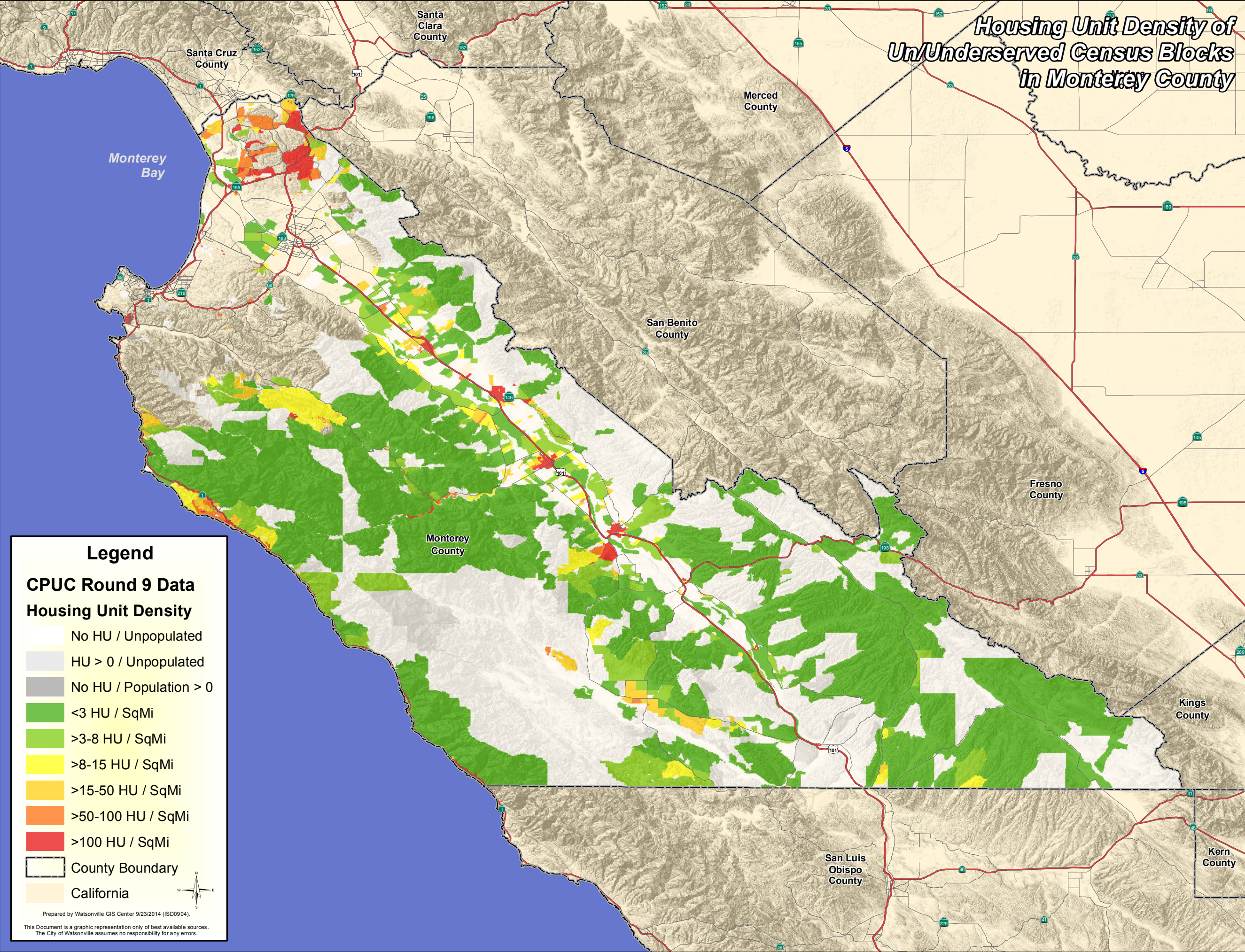
Prepared by Watsonville GIS Center 11/05/2014 (ISD0904).

This Document is a graphic representation only of best available sources.  
The City of Watsonville assumes no responsibility for any errors.





*Housing Unit Density of  
Un/Underserved Census Blocks  
in Monterey County*



**Legend**

**CPUC Round 9 Data**

**Housing Unit Density**

- No HU / Unpopulated
- HU > 0 / Unpopulated
- No HU / Population > 0
- <3 HU / SqMi
- >3-8 HU / SqMi
- >8-15 HU / SqMi
- >15-50 HU / SqMi
- >50-100 HU / SqMi
- >100 HU / SqMi
- County Boundary
- California

Prepared by Watsonville GIS Center 9/23/2014 (ISD0904).  
This Document is a graphic representation only of best available sources.  
The City of Watsonville assumes no responsibility for any errors.



## **Monterey County**

1. Greenfield
2. King City
3. Gonzales

## **Regional Wild Cards**

1. Soledad
2. Castroville
3. Chualar

## **Santa Cruz County**

1. Pleasure Point/Twin Lakes
2. Soquel
3. Brookdale

## **San Benito County**

1. Aromas area
2. Airport/Northeast area
3. Cienega Road area

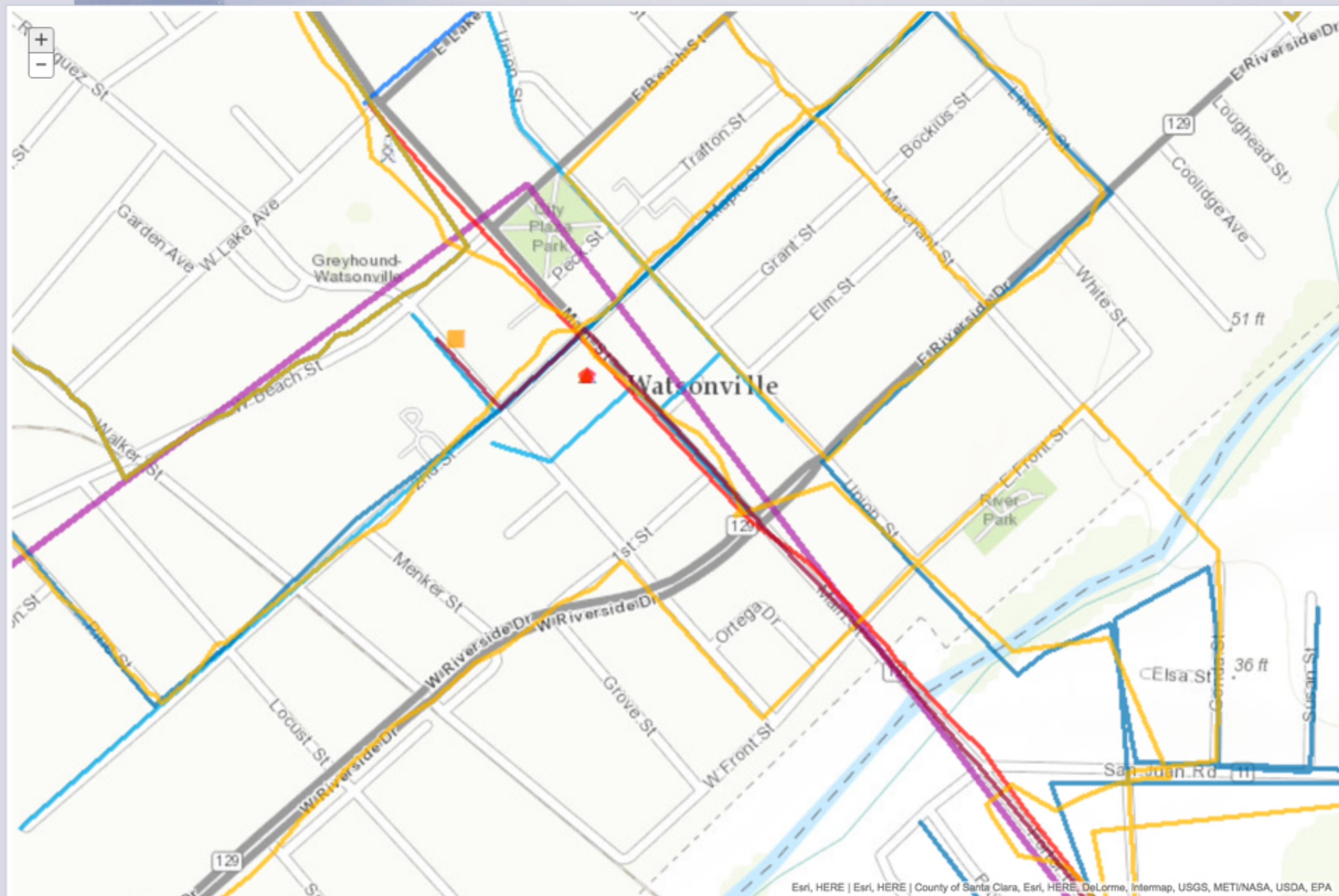
CCBC priority areas

100,000 people total  
70,000 people CASF eligible  
12 feasible projects













Find Identify Measurement Layers Legend Basemaps Print