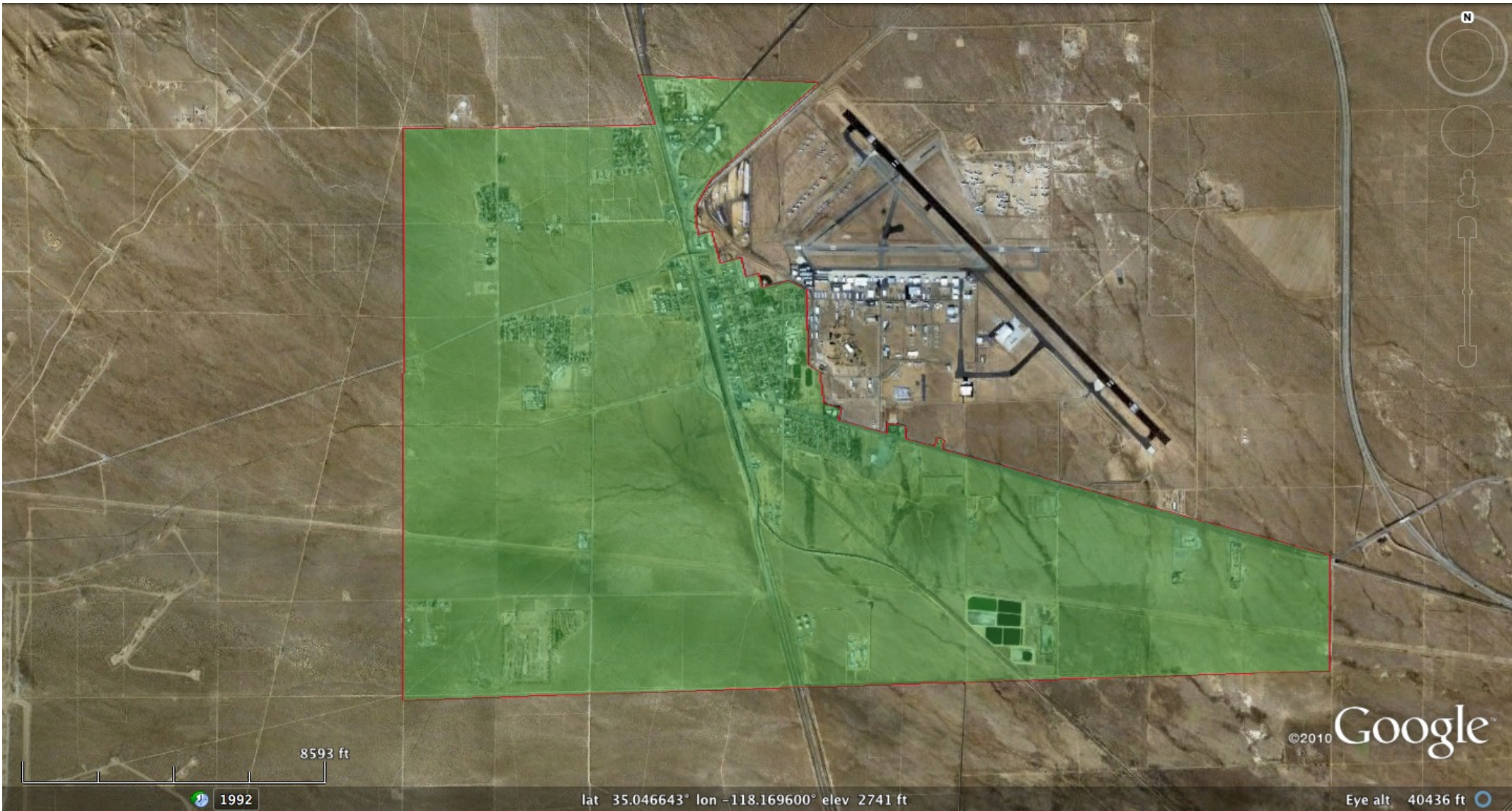


Project Info

Applicant's Name	Race Telecommunications, Inc.
Contact Person	Raul Alcaraz 340 Lorton Ave. Burlingame, CA 94010 raul@race.com
Project Title	Kern County City of Mojave
Proposed Project and Location	The City of Mojave, California
Project Type	Last Mile
CASF Funding requested	Grant funding of \$6,229,863.50
Description of the Project	Race Telecommunications, Inc. is applying for CASF funding to deploy a fiber-to-the-premises (FTTP) Last Mile network to serve 100% of the homes in a defined service area that includes the City of Mojave, California; a Census Defined Place (CDP) in the high-desert portion of Kern County. Fiber based entry level speeds will start at 15Mbps down and 10Mbps up.
Map of the Proposed Project	Included below
List of Census Block Groups and Zip Codes	60290059001 - 93501 60290059002 - 93501 60290059003 - 93501



8593 ft

1992

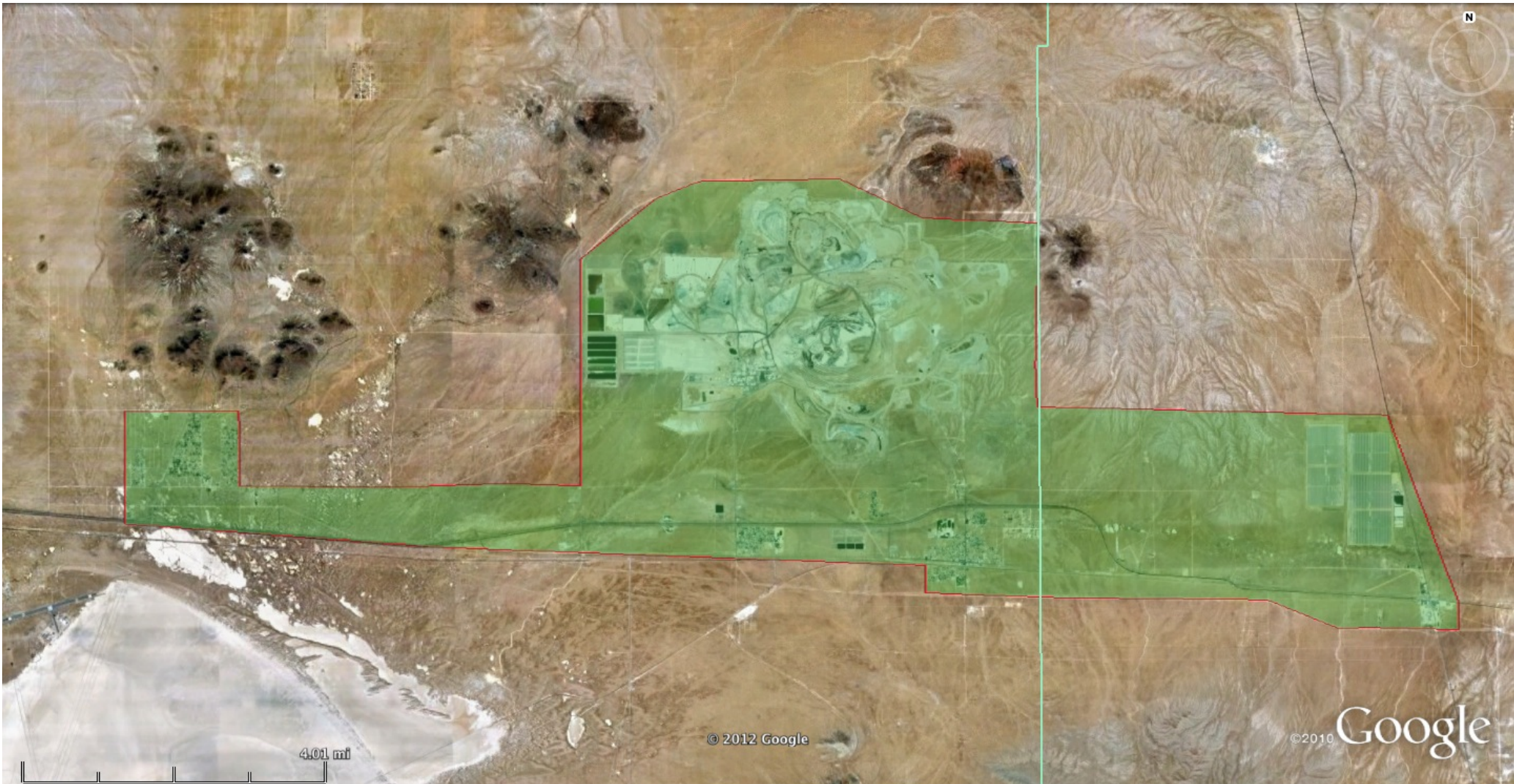
lat 35.046643° lon -118.169600° elev 2741 ft

©2010 Google

Eye alt 40436 ft

Project Info

Applicant's Name	Race Telecommunications, Inc.
Contact Person	Raul Alcaraz 340 Lorton Ave. Burlingame, CA 94010 raul@race.com
Project Title	Kern County City of Boron
Proposed Project and Location	The City of Boron, California
Project Type	Last Mile
CASF Funding requested	Grant funding of \$6,780,527.60
Description of the Project	Race Telecommunications, Inc. is applying for CASF funding to deploy a fiber-to-the-premises (FTTP) Last Mile network to serve 100% of the homes in a defined service area that includes the City of Boron California; a Census Defined Place (CDP) in the high-desert portion of Kern County. Fiber based entry level speeds will start at 15Mbps down and 10Mbps up.
Map of the Proposed Project	Included below
List of Census Block Groups and Zip Codes	60290056001 - 93516 60290056002 - 93516 60290056003 - 93516 60290116001 - 93516 60290116002 - 93516 60290055033 - 93516



Imagery Date: 12/3/2011

lat 35.029105° lon -117.697866° elev 2415 ft

Eye alt 17.74 mi