

PUBLIC UTILITIES COMMISSION OF THE STATE OF CALIFORNIA

**Communications Division
Broadband, Policy and Analysis Branch**

**RESOLUTION T-17429
April 10, 2014**

R E S O L U T I O N

Resolution T- 17429 Approval of Funding for the Grant Application of Sunesys, LLC, (U-6991 -C), from the California Advanced Services Fund (CASF) in the Amount of \$7,352,164 for the Connected Central Coast Unserved and Underserved Broadband Project

I. Summary

This Resolution approves funding in the amount of \$7,352,164 from the California Advanced Services Fund (CASF) for the CASF grant application of Sunesys, LLC, (Sunesys) for its Connected Central Coast Unserved and Underserved Broadband Project (Sunesys Project). The Sunesys Project will build a 91.18 mile middle-mile backhaul network from Santa Cruz to Soledad, and extend high-speed internet service to 430 square miles covering Castroville and the California Highway 156 (CA156) corridor towards Prunedale, Chualar, Gonzalez, Soledad and Salinas in the Central Coast. The proposed network will pass through 68 unserved and 1,069 underserved census blocks. This middle-mile infrastructure has the potential to service a number of unserved and underserved adjacent census blocks.

II. Background

On December 20, 2007, the California Public Utilities Commission (Commission) in Decision (D.) 07-12-054 established the CASF program as a two-year program to provide funds for the deployment of broadband infrastructure in unserved and underserved areas in California.

On September 25, 2010, Governor Schwarzenegger signed Senate Bill (SB) 1040¹ which codified the CASF program and expanded it to include three accounts: (1) the Infrastructure Grant Account, (2) the Consortia Grant Account, and (3) the Revolving Loan Account. The latter two accounts are intended to address the needs that were

¹Stats. 2010, c. 317, codified at Public Utilities (P.U.) Code § 281.

unmet under the original CASF program. Specifically, the purpose of the Revolving Loan Account is “to finance capital costs of broadband facilities not funded by a grant from the Broadband Infrastructure Grant Account.”² SB 1040 also expanded the CASF fund from \$100 million to \$225 million with the addition of \$100 million to the Infrastructure Grant Account, and allocation of \$10 million and \$15 million to the Consortia Grant Account and the Revolving Loan Account, respectively.³

On February 1, 2012, the Commission approved D.12-02-015 to implement new guidelines for the Infrastructure Grant and Revolving Loan Accounts. Key provisions of the Decision include:

- A maximum CASF grant award of 70 percent of project costs for unserved areas and 60 percent for underserved areas;
- A definition of an underserved area, “where broadband is available, but no wireline or wireless facilities-based provider offers service at advertised speeds of at least 6 mbps download and 1.5 mbps upload;” and
- A Revolving Loan Program to provide supplemental financing for projects also applying for CASF grant funding (up to 20% of projects costs, with a maximum of \$500,000), utilizing the same project and applicant eligibility requirements as the Infrastructure Grant Program.

Consequently, on May 10, 2012, the Commission approved Resolution T-17362 which established the application deadlines for the CASF Broadband Infrastructure Grant Account and the Revolving Loan Account as follows:

- October 1, 2012, for unserved areas;
- February 1, 2013, for underserved areas not previously funded by the CASF and hybrid projects that cover both unserved and underserved areas; and,
- A date to be determined for projects in underserved areas where the existing broadband infrastructure was partially funded by a CASF grant.

On February 1, 2013, Sunesys submitted an application for CASF funding in the unserved and underserved area of Central Coast, covering 91.18 mile route from Santa Cruz to Castroville and the CA156 corridor towards Prunedale, Chualar, Gonzalez, Soledad and Salinas.

²P.U. Code § 281(e).

³P.U. Code § 281(b)(1).

III. Notice/Protests

Communications Division (CD) staff posted the proposed area project map, census block groups (CBGs) and zip codes lists by county for the Sunesys Project on the Commission's CASF website page under "Pending New CASF Applications to offer Broadband as of February 11, 2013." CD received two challenges from Comcast Phone of California, LLC, on behalf of its affiliates (Comcast) and Verizon California, Inc., (Verizon) as described below, to the proposed project areas.

IV. Discussion

This Resolution adopts CD's recommended CASF funding award of \$7,352,164 for the Connected Central Coast Broadband Project. This award represents 60% of the pro-rated and adjusted total project cost of \$12,253,606 or 55% of the total project costs of \$13,300,000. Key project information and maps are shown on pages A-1 through A-5 of Appendix A and Appendix B.

A. Project Overview

Sunesys has held a Certificate of Public Convenience and Necessity (CPCN) (U-6991-C) since 2006, and offers fiber optic network construction and dark fiber network infrastructure connectivity. Sunesys owns and operates fiber networks in major metropolitan markets in the United States and is licensed to do business in twelve states including California. In addition, Sunesys leases dark fiber and managed private network services to a number of anchor institutions in the K-12, higher education, healthcare, enterprise, and telecommunications carriers in major metropolitan areas across the country.

In California, Sunesys owns and operates over 1,800 miles of fiber optic cable where much of the network was built to serve the K-12 communities across the State through the Universal Services Administration Company's E-Rate program serving 60 school districts. Other customers include healthcare institutions such as the City of Hope and major telecommunications carriers.

In its application, Sunesys contends that the proposed Sunesys Project area, located in Santa Cruz and Monterey Counties, consists of mostly underserved and some unserved areas that currently do not have access to wireline broadband service at served speeds and where wireless broadband speeds are less than 6 Mbps download and 1.5 Mbps upload. The economy in the area is based on tourism in the coastal regions and agriculture in the Salinas Valley. According to Sunesys, the Salinas Valley is the center for Monterey County's 3.8 billion dollar agriculture industry. However, the region faces many challenges. There are pockets of populations in poverty in North Monterey County and

down the Salinas Valley, where most of the population lives. When completed, the Sunesys Project will provide broadband backhaul access at speeds of up to 100 Gigabits per second (Gbps) per fiber strand from the City of Santa Cruz to the first major fiber point-of-presence (PoP) in the Salinas Valley at Soledad, and will partner with regional Internet Service Providers (ISPs) who provide last mile service to these communities.

The CBGs impacted by the project are listed in Appendix B.

The Sunesys Project installation will connect existing fiber from Sunnyvale to Santa Cruz and subsequently to Soledad, creating a fully redundant fiber service to the region with connectivity to major fiber PoP(s) in Sunnyvale and Soledad. Local service providers throughout the Central Coast will be able to connect to the middle-mile network to offer broadband to the communities in the area at or exceeding the 6 Mbps down and 1.5 Mbps up standard set by the CPUC. In addition, Sunesys will provide service to anchor institutions within the project area at significantly higher speeds than the CPUC standard.

According to Sunesys, several local last-mile service providers and local institutions have expressed interest in the project. Sunesys expects that as bandwidth demands continue to increase, additional last-mile service providers will lease connections. To gain backhaul access to the network, Sunesys will work to establish partnerships with service providers and other entities such as Surfnet, a last mile internet service provider; Cruzio, an internet, last mile and data center provider; the California Telehealth Network, California's statewide broadband network dedicated to healthcare; and the Central Coast Broadband Consortium (CCBCs), which works with the public and private sectors on broadband policy, economic initiatives, infrastructure funding and deployment. Additionally, Sunesys will focus to secure anchor institutions to gain access to the network, including Hartnell College and California State University (CSU) Monterey Bay.

Surfnet and Cruzio are two ISPs and last-mile carriers that have planned to partner with Sunesys and serve the Sunesys Project area. Surfnet plans to extend last-mile service in the communities of Paradise Road and Monterey Dunes in Northern Monterey County and is seeking CASF funding for these projects in a related, but separate application.

The Sunesys Project will have the potential to enable last-mile providers to serve up to 11,124 households in the Central Coast. There is also potential for the network to extend affordable bandwidth beyond individual households to businesses already in the area or businesses looking to move into the area.

The Sunesys Project commits to a five-year pricing plan, three years beyond the required two-years, starting from the initial date of service under the following terms:

| Description | Monthly Recurring Rate |
|---|---|
| Lease of fiber by ISPs | \$8.50 per fiber mile per month (this amount equates to \$1,550 for two strands of fiber for the whole route). An ISP pays a minimum charge of \$500 per month for two strands of dark fiber. |
| 1 Gbps – 4 Gbps | \$700 / month first gig; \$400/month each additional gig |
| 5 Gbps – 9 Gbps | \$2,000 / month five gigs; \$300/month each additional gig |
| 10 Gbps + | \$3,000 / month ten gigs; \$2,000/month each additional 10 gigs |
| Charges for Lateral connection to the Project | Negotiated with the customers and are based on infrastructure, any splicing, termination, or equipment required for additional Lateral connection to the network |

Sunesys has informed CD staff that it will honor its pricing commitment above for any contract, of any length, if it is signed during the initial five years. For example if in year four, a customer signs a 10 year contract; Sunesys will honor the above pricing through year 14.

Sunesys has letters of support from the following local service providers, institutions, and government and community agencies.

- California State Assembly – Districts 29 and 30
- Central Coast Broadband Consortium
- The Corporation for Education Network Initiatives in California (CENIC)
- City of Santa Cruz
- City of Watsonville
- County of Santa Cruz
- Cruzio
- California State University – Monterey Bay
- Wireless Education & Technology, CSU Monterey Bay
- California Telehealth Network
- Hartnell College
- Monterey County
- RedShift Internet Services
- Steinbeck Innovation Foundation
- Surfnet Communications

B. Project Qualification

To qualify under the CASF program, the applicant is required to submit proof that the area is unserved or underserved by submitting shapefiles of the proposed project. CD reviews the submitted shapefiles by comparing them with United States 2010 Census data and the California Broadband Availability Map, which contains broadband availability data as of June 30, 2012. Once CD determines that the area is eligible either as an unserved or underserved area, CD staff evaluates all other information submitted by the applicant to determine if the project meets the requirements as outlined in D.12-02-015. Other information CD reviews includes: proof of a CPCN from the Commission; descriptions of current and proposed broadband infrastructure; number of potential subscriber households and average incomes; project construction schedule; project budget; proposed pricing and commitment period for new subscribers; and financial viability of the applicant.

As an initial step in the review of Sunesys's application, CD checked the CBGs as submitted in the project application and corrected the CBGs to conform to the 12-digit format and the 2010 Census. Sunesys agreed with these adjustments. Additionally, CD checked the CBGs submitted in the project application to determine that the project was indeed unserved and underserved. In doing so, CD found broadband availability at served speeds by Satellite providers such as Hughes, Skycasters LLC, ViaSat Communications, and Starband. However, as determined in D.12-02-015, the Commission does not consider satellite broadband service in CASF project evaluation, unless the satellite project in an area was previously funded by the CASF.⁴ CD also found through the California Interactive Broadband Map (map) that the majority of the project area shows as served by mobile broadband providers such as Verizon and T-Mobile. CD requested Sunesys to conduct mobile speed tests in the project area. Sunesys conducted Mobile testing in June and again in November 2013, and the results showed that for the most part, the project area is underserved as further discussed below.

Comcast challenged the proposed project area on April 4, 2013. CD staff determined through the California Interactive Broadband Map that Comcast is indeed providing broadband availability at served speeds in the northern section of the project area in Census Blocks (CBs) 060530106061111, 060530106061191, 060530106061208, 060530106061219. Sunesys agreed to remove these served areas from its proposal and submitted the revised project area on April 4, 2013.

⁴ This determination was based on the limited speed capabilities of satellite services, the cost to the consumer, high latency, and unreliability known at the time of the decision. (D. 12-02-015 at 13-15.) Since that time, like other technologies, satellite services have improved.

On March 11, 2013, Verizon challenged the application stating that wireless carriers continue to build-out their 4G LTE networks. Verizon's challenge was very vague and did not contain information sufficient to determine if Verizon was challenging the entire project proposal or just a specific area of the project. On March 27, 2013, CD staff requested that Verizon clearly identify what areas of the project, by census block, it was challenging and to provide CD with the following information: number of subscribers by census block and speed tier, speed tests with a description on how the speed tests were conducted and what tools were used, and the addresses of the locations where the speed tests were performed to help determine if in fact the area is served. Verizon did not provide a response or any further information on the challenge and therefore CD staff considers Verizon's challenge unsubstantiated. On April 2, 2013, CD staff e-mailed Verizon confirming that Verizon did not provide a response and informed Verizon that CD will continue to consider the majority of the project as eligible for CASF funding.

Additionally, CD staff determined that there are other areas in the project that are categorized as served. These areas include the segment from Santa Cruz to Watsonville, an estimated 27 miles, and the segment from Watsonville to north of Prunedale, an estimated 3 miles, that are served by wireline at speeds greater than 6 Mbps download and 1.5 Mbps upload. However, these particular segments are necessary to extend existing fiber from Sunnyvale to Soledad. Sunesys asserts that these segments are primarily built to benefit the areas south of Prunedale and expects a higher demand for wholesale access to be provided to last mile providers in these southern parts. In D.12-02-015, the Commission established guidance for funding middle-mile projects where broadband infrastructure may have to pass served areas to reach an unserved or underserved area.⁵ In these instances, the Commission directed that applicants pro-rate the costs of such facilities and provide detailed explanation of the cost allocation. Accordingly, Sunesys prorated the costs associated with these two segments to reflect the expected benefits these facilities will provide to the unserved and underserved areas.⁶

CD staff, through the map, also determined that mobile broadband providers T-Mobile and Verizon Wireless service the Cities of Gonzales and Chualar. The map shows field tests performed by the Commission⁷ in the project area with speeds measuring at served levels. Sunesys performed its own tests using CalSPEED⁸ in the area and the results show the majority of the test points with speeds at served levels in both Gonzales and Chualar. Their tests confirmed the availability of service, and as a result the area is considered served. Therefore, the costs associated with this segment, an estimated three miles, are

⁵ D. 12-02-015, Appendix 1 Section III, at 3

⁶ Sunesys estimates that 85% of the costs for the Santa Cruz to Watsonville segment and 45% of the costs for the Watsonville to north Prunedale segment are for the benefit of the unserved and underserved areas of the project, respectively.

⁷ CD validates advertised speeds by conducting drive tests at 2,000 points within the State.

⁸ CalSPEED is the Commission's mobile application that is used to test mobile broadband speeds.

prorated to reflect the expected benefits of the build out to unserved and underserved areas.⁹ Sunesys provided an updated proposed project budget with prorated costs to account for the fiber backhaul going through these served areas.

Sunesys performed tests using CalSPEED on the remaining areas of Castroville, Moss Landing, Elkhorn and Prunedale. Specifically the map shows that T-Mobile serves the Castroville area. However, the tests performed by Sunesys on November 22, 2013 show actual speeds at underserved levels. Similarly in Moss Landing, the map shows that T-Mobile serves the area, but the majority of tests performed by Sunesys show actual speeds at underserved levels. The map also shows that mobile broadband providers Verizon, and in some parts, T-Mobile, serve the communities of Elkhorn and Prunedale, but the test results performed by Sunesys show otherwise. Moreover, the Commission's own mobile field test shows one test point in the area where Verizon's actual speeds are below served levels and T-Mobile's test shows "no service."

In the southernmost part of the Sunesys project, the city of Soledad shows as underserved by wireline and served by mobile broadband. However, CD has not been able to validate the maximum advertised mobile broadband speeds in the area. CD validates advertised speeds by conducting drive tests at 2,000 points within the state. There is one test point in Soledad, very close to Hwy 101, where actual speeds show less than 6 Mbps download/1.5 Mbps upload by the majority of mobile providers in the area: AT&T, Sprint, and Verizon. However, mobile provider T-Mobile shows actual speeds above 6 Mbps download/1.5 Mbps upload.¹⁰ However, the T-Mobile 3rd round interpolated¹¹ average downstream speed in the area is estimated to be 4 Mbps downstream; below the served threshold. Additionally, Sunesys provided CD staff mobile test results that were performed in Soledad using a Verizon phone and the Commission's CalSPEED mobile test application that further confirms broadband availability at underserved speeds by Verizon Wireless and in some instances, at unserved speeds when the mobile tests were conducted indoors. CD staff therefore deemed the area as eligible for funding.

The original CASF funding requested by Sunesys was \$11,970,000, which is 90% of the total project cost of \$13,300,000. After adjusting and prorating the costs of the segments that go through served areas of Santa Cruz, Watsonville, Gonzales and Chualar, as discussed above, the project funding is reduced to \$7,352,164, representing a CASF grant equal to 60% of the pro-rated and adjusted total project cost of \$12,253,606.

Since Sunesys's submission of its CASF project application, Round 7 broadband data as of December 31, 2012, show maximum advertised mobile broadband availability from

⁹ Sunesys estimates that 45% of the costs for this segment are for the benefit of unserved and underserved areas of the project.

¹⁰ 3rd Round mobile field tests conducted in spring 2013.

¹¹ CD inputs mobile test results into an interpolation model to predict speeds in an area.

Verizon at speeds greater than 6 Mbps download and 1.5 Mbps upload in the proposed project area¹². However, CD has not been able to validate the maximum advertised mobile broadband speeds in the area. CD validates advertised speeds by conducting drive tests at 2,000 points within the state. There are six test points in the eligible project area where actual speed test results during the fall 2012 mobile broadband drive test are more than 6 Mbps download and 1.5 Mbps upload. However, since the majority of test results conducted by Sunesys shows speeds less than 6 Mbps download or 1.5 Mbps upload in the area, it is unclear whether Verizon completely serves the project area. Additionally, as discussed above, Verizon did not provide a response or any further specific information when CD staff requested more details on the challenge in March 2013. For these reasons, CD staff considers the challenge unsubstantiated. Therefore, CD staff concludes that the remaining communities in the application are unserved or underserved at this time and eligible for CASF funding.

C. Project Evaluation and Recommendation for Funding

CD evaluated the application with respect to the scoring criteria defined in D.12-02-015, Appendix 1, Section VIII (Scoring Criteria). The Scoring Criteria includes: (i) Funds Requested per Potential Customer, (ii) Speed, (iii) Financial Viability, (iv) Pricing, (v) Total Number of Households in the Proposed Area, (vi) Timeliness of Completion of Project, (vii) Guaranteed Pricing Period, and (viii) Low-Income Areas. In addition, five (5) bonus points are added to the score of an applicant that is able to submit local government and community endorsements or letters of support.

Staff recommends funding for this project because it has an above average overall score relative to other projects and will serve customers in unserved and underserved areas. The project scored high in the areas of funds requested per household, total number of households in the proposed area, speeds offered, pricing commitment, and strong community support. The estimated cost per household is \$661 with a total of 11,124 households in the project area; where an estimated 59 households are unserved. Additionally, Sunesys is offering maximum advertised speeds of 100 Gbps per second per fiber strand and a five year pricing commitment. The project encompasses many anchor institutions which may benefit from the deployment of high-speed Internet access in the area (See Appendix D).

¹² On December 19, 2013, Round 8 broadband data as of June 30, 2013 became available in the CA Broadband Availability Map, after CD staff's completed its review and analysis of the numerous mobile tests conducted by the applicant in the project area in June and November 2013 and determination of eligible and not-eligible areas. Latest Commission mobile field tests show improvement of mobile speeds in the Elkhorn, Prunedale, Castroville and Soledad areas. However, the mobile test points vary by providers. Some mobile tests show some providers having mobile speeds at served levels but at other mobile test points in the surrounding area, those same providers show speeds at underserved levels.

The Sunesys Project has letters of support from many government organizations and foundations that stress the need for closing the digital gap for communities in the project area pertaining to education, healthcare, public safety and agricultural. Specifically for agriculture, the Steinbeck Innovation Foundation is working to build the world's first ag-tech cluster through education and advanced research. Having sufficient broadband capabilities in the area is critical and important to support agriculture innovation(s). A number of support letters also indicate the importance of expansion of healthcare services via broadband. Since more seniors are choosing to spend their retirement in this rural and semi-rural area, delivery of healthcare via broadband without sufficient broadband backhaul will be difficult.

The Sunesys Project will serve unserved and underserved areas and meets CASF funding requirements with respect to the following factors:

- Speed - the proposed speed offering of over 100 Gbps complies with the benchmark set by the Commission
- Service area - is determined to be unserved and underserved and covers 430 square miles
- Matching Funds - the applicant has certified that the matching funds will come from their capital budget; the submitted balance sheet, income and cash flow statements show that the applicant is financially viable and has the financial capability to match the funds
- Price commitment period- the applicant has committed to a pricing plan of five years which is three additional years to the standard CASF two year commitment
- Deployment schedule - the project will be completed within 24 months, within the Commission's required construction timeline

Sunesys, in its application and at subsequent meetings with CD staff, has claimed that a 90% CASF funding is necessary to provide last mile providers reasonable wholesale prices that will enable these last mile providers to provide affordable retail services to end users. Sunesys claimed that if CASF funding were to be reduced to 60%, it will have to charge higher prices for access to the middle mile network, and this could in turn lead to retail monthly recurring prices of \$65 to over \$100 for end use subscribers. In an email dated August 13, 2013, CD staff requested Sunesys to provide additional information to further substantiate its claims and whether it has explored other sources of funding for the project. Sunesys responded that there are no other sources of funding besides the planned Sunesys match and that Sunesys had looked for other sources of funding, such as the United States Department of Agriculture (USDA) Rural Utilities Service (RUS) Community Connect program and local redevelopment funds. However, according to Sunesys, it did not qualify for any funds that were available. Sunesys also stated that there were no tribes within the project area and as a result it could not apply for Tribal funds. Additionally,

the Sunesys Project does not qualify for the Federal Communications Commission (FCC) Connect America Fund since it is a middle-mile project.

In its September 9, 2013 response to CD’s questions regarding the need for a higher percentage funding, Sunesys provided a table detailing the payback period at various price points for 90% versus 60% CASF grant funding scenarios, assuming 15 entities subscribe for wholesale service (see Appendix C). As shown in the summary table below, with a 90% CASF grant, Sunesys is able to charge a price of \$8.50 per fiber mile per month with a payback period of less than 5 years. If the Commission reduced the CASF funding to 60%, Sunesys would have to charge four times the proposed pricing or \$34 per fiber mile per month in order to recoup its investment within the same payback period. Sunesys stated that for this project to be viable to the company, a payback period of less than 60 months must be achievable. At 60% CASF funding and pricing of \$8.50 per fiber mile per month, the projected payback period amounts to 19 years. Originally, Sunesys claimed that a payback period of longer than 5 years would not provide Sunesys with a sound business plan to achieve an appropriate payback on its invested capital. However, after pro-rating the cost of the segments transiting served areas, Sunesys agreed to a payback period of 8 years versus 5 years, assuming that CASF funding is at 83% of the initial total project cost of \$13,300,000.

| Price per fiber mile per month | 60% funding Payback Period (Months) | 90% funding Payback Period (Months) | 83% funding Payback Period (Months) |
|--------------------------------|-------------------------------------|-------------------------------------|-------------------------------------|
| \$8.50 | 228.8 | 57.2 | 97.7 |
| \$11 | 176.8 | - | - |
| \$34 | 57.2 | - | - |

Thus, as discussed above, Sunesys’s request for a higher percentage of CASF funding is predicated on the cost per fiber mile per month, the estimated number of last mile providers that are expected to sign-up for service, and the expected payback period. Changing any of these parameters may result in CASF funding levels above 60% but less than 83% of the total project costs of \$13.3 million. For example, if Sunesys were to increase the price it charges last-mile providers from \$8.50 per fiber mile per month to \$10, retain the number of last mile providers expected to sign up for service, and have a payback period of 10 years, it will require an estimated \$10,017,700 in CASF funding with Sunesys investing \$3,282,300 from its capital budget. This equates to 75% CASF funding of the total project costs of \$13.3 million or 81.75% CASF funding of the total pro-rated costs of \$12.25 million. Similarly, if Sunesys were to increase price to \$11 per fiber mile per month, retain the number of last mile providers expected to sign up for service, and have a payback period of 10 years, it will require an estimated \$9,689,470 in CASF funding with Sunesys investing \$3,610,530 from its capital budget. This equates to 73% CASF funding of total project costs of \$13.3 million or 79% CASF funding of total pro-rated costs.

However, it is not reasonable to assume that given a price increase that the number of last mile providers to sign up for service would not change. An increase in price is likely to negatively affect project subscribership.

Sunesys, in its September 9, 2013 response, also included a letter from Surfnet dated September 3, 2013, which stated that if Sunesys raises its rates for fiber mile from \$8.50 to \$11 per month, Surfnet will have to increase its end users' monthly recurring rates from \$65 to \$85. Surfnet contends that any increase above \$11 per month per fiber mile will likely push monthly recurring rates to \$100 or above, which is an unrealistic price that households within the project area are less likely to pay. Based on the socioeconomic demographics in the project area, CD staff anticipates that an increase in monthly recurring prices may reduce subscribership in the area where there is a relatively high unemployment rate and where 16.1% of the population lives below poverty level in 2008 to 2012.¹³ If Sunesys were to charge \$34 per fiber mile per month, it is likely that Surfnet will not be able to pursue the project because it will have to increase the price to end users so high that the take rate will not make the project financially viable.

As a result of the additional information provided by Sunesys, CD staff understands Sunesys' position that a higher level of CASF funding is needed for its project to move forward. It proposes a five year wholesale pricing commitment to last-mile providers at \$8.50 per fiber mile per month. This proposed pricing represents a significant reduction over the standard rates Sunesys charges in other markets that includes \$60 - \$65 fiber per mile per month on a three to five year contract. Further, given the lack of other available sources of funding for the project, as attested by Sunesys, a higher CASF funding of the total project costs is necessary in order to keep prices for access to the middle mile network at reasonable rates. Higher rates would negatively affect subscribership to the middle mile project and thereby affect broadband availability. However, CD staff is constrained by program requirements and recommends CASF funding at the maximum allowed for unserved and underserved areas as set forth in D.12-02-015. Sunesys has informed CD staff that it will not be willing to take on this project without CASF funding of at least 83% of the total project costs of \$13,300,000 or 90% of the total adjusted pro-rated cost of \$12,253,606, because a smaller funding percentage on this project will take too long to receive a viable return on the invested capital.

CD staff finds that funding the Sunesys Project is for the public benefit and aligns with CASF's goal to encourage the deployment of high-quality advanced information and communications technologies to all Californians to promote economic growth, job creation, and substantial social benefits. This project will benefit emergency services and a number of anchor institutions in the K-12, higher education, healthcare, enterprise,

¹³ For unemployment rates see Monthly Labor Force Data for Cities and Census Designated Places: <http://www.labormarketinfo.edd.ca.gov>. Poverty level between 2008 to 2012 was 16.1% for Monterey County, but within the project area, it is mostly higher. (See <http://quickfacts.census.gov/qfd/states/06/06053.html>)

agricultural sector and telecommunications carriers. Based on its review, CD determined that the Sunesys Project grant application qualifies for funding as an unserved and underserved area. The social benefits of this project extend to agricultural areas and low income communities and can benefit numerous first responders, schools and community anchor institutions.

D. Safety Impact

This project will improve connectivity to the surrounding areas and many anchor institutions. Sunesys will provide a robust middle-mile network to local ISPs, which will in return, enable them to offer affordable and reliable services to anchor institutions, emergency first responders and other public agencies. The high speed Internet connections will facilitate the transmission of data and communications amongst first responders and the public. There are many community anchor institutions in the project area such as the sheriff's office, fire department, schools, library, and ambulance services that will potentially benefit from the project. For a complete list of these anchor institutions, please see tables 1 thru 3, in Appendix D.

According to Sunesys, this project will build a middle-mile that is important to the migration to Next Generation (NG) 9-1-1 as well as the functioning of the emergency first responders. It will provide a pathway to the Internet for Santa Cruz and Monterey Counties. This path will be an option for all local ISPs to provide redundancy on services they provide to customers in the proposed service area.

The Sunesys Project could prove to be of critical value during natural disasters because it includes areas with high flood hazards and high earthquake occurrences and it is important to have reliable systems in place when and if a disaster strike.

V. Compliance Requirements

Sunesys should comply with all the guidelines, requirements, and conditions associated with the granting of CASF funds as specified in D.12-02-015. Such compliance includes, but is not limited to:

A. California Environmental Quality Act (CEQA)

The Sunesys Project is subject to the California Environmental Quality Act (CEQA) review. The Commission must complete CEQA review prior to disbursing CASF funds for construction activities.

Prior to any construction activity, the carrier is required to seek further authority from the Commission for such activity by filing a Proponent's Environmental Assessment (PEA) pursuant to Commission Rule of Practice and Procedure 2.4, and must undergo an environmental review pursuant to the California Environmental Quality Act (CEQA). (California Public Resources Code § 21000, *et seq.*) Carriers should contact the Supervisor of the Commission's Energy Division CEQA Unit well in advance of a contemplated filing to (a) consult with staff regarding the process of developing and filing a PEA; (b) provide for cost recovery per Rule of Practice and Procedure 2.5; and (c) enter into a Memorandum of Understanding to allow the Energy Division to initiate the retention of an environmental contractor to perform the environmental review.

Carriers may file a completed CEQA review conducted by another agency acting as the Lead Agency pursuant to CEQA; carriers should make every effort to ensure that the Commission's CEQA Unit is aware of and included in the CEQA process if it is conducted by another agency acting as the CEQA Lead Agency. Carriers should contact the Supervisor of the Commission's Energy Division CEQA Unit well in advance of a contemplated filing to consult with staff regarding the applicability of another agency's CEQA review.

B. Deployment Schedule

The Commission expects Sunesys to complete the project in 24 months from the start date. If the applicant is unable to complete the proposed project within the 24-month timeframe identified in its application, Sunesys must notify CD's Director as soon as it becomes aware of this prospect. The Commission may reduce payment for failure to notify CD's Director and timely complete the project. In D.12-02-015, the Commission required complete build-out of a CASF-funded project within 24 months from approval of the application.

C. Execution and Performance

CD staff and the CASF grant recipient shall determine a project start date after the CASF grant recipient has obtained all approvals. Should the recipient or contractor fail to commence work at the agreed upon time, the Commission, upon five (5) days written notice to the CASF recipient, reserves the right to terminate the award.

In the event that the CASF recipient fails to complete the project, in accordance with the terms of approval granted by the Commission, the CASF recipient must reimburse some or all of the CASF funds that it has received.

The CASF grant recipient must complete all performance under the award on or before the termination date of the award.

D. Performance Bond

The Commission requires a Performance Bond if the applicant certifies that the percentage of the total project costs it is providing comes from their capital budget and is not obtained from outside financing. A performance bond will be required from Sunesys if the project's matching funds do not come from its capital budget.

E. Price Commitment Period

The minimum required price commitment period for broadband service to all households within the project area is two years. Sunesys guarantees the price of service offered in the project area for five years.

F. Project Audit

The Commission has the right to conduct any necessary audit, verification, and discovery during project implementation and construction to ensure that CASF funds are spent in accordance with Commission approval.

The recipient's invoices will be subject to a financial audit by the Commission at any time within three (3) years of completion of the work.

G. Providing Voice Service

If the grantee is providing voice service in the project area, it must meet the Federal Communications Commission (FCC) standards for E-911 service and utilize battery backup Power. However, Sunesys will not be providing voice service.

H. Reporting

Grantees must submit quarterly progress reports on the status of the project irrespective of whether grantees request reimbursement or payment. Before full payment of the project, the CASF recipient must submit a project completion report. Progress reports shall use both the schedule for deployment; major construction milestones and costs submitted in the proposals, indicate the actual date of completion of each task/milestone as well as problems and issues encountered, and the actions taken to resolve these problems and issues during project implementation and construction; and identify future risks to the project. Recipients shall also include test results on the download speed and upload speed per CBG and per ZIP Code basis in the final completion report. Recipients must certify that each progress report is true and correct under penalty of perjury.

I. Submission of Form 477

The FCC currently requires broadband providers to submit Form 477 biannually and include speed data. While there is an imperfect match between the current reporting areas for the Form 477 and CASF, Form 477 information will be useful in documenting CASF deployment for the specific new service area(s) of the carrier. CASF recipients shall submit a copy of their Form 477 data directly to the Commission, under General Order 66-C, when they submit this data to the FCC for a five year period after completion of the project.¹⁴

VI. Payments to CASF Recipients

Submission of invoices from and payments to Sunesys shall be made in accordance with Section XI of Appendix 1 of D.12-02-015 and according to the guidelines and supporting documentation required in that decision.

Payment to Sunesys shall essentially follow the process adopted for funds created under P. U. Code § 270. The following table describes the timeline for processing CASF payments.

| Event | Payment Cycle 1 (Day/Month) | Payment Cycle 2 (Day/Month) |
|---|--|---|
| Invoices due from Sunesys to CD | 5 th of Month 1 | 20 th of Month 1 |
| Payment letters from CD to Administrative Services ¹⁵ | On 19 th of Month 1 | On 4 th of Month 2 |
| Invoices submitted from Administrative Services to State Controller’s Office (SCO) for payments | 20 th through 26 th of Month 1 | 5 th through 13 th of Month 2 |

Sunesys may submit its invoices under Payment Cycle 1 or 2.

If any date in this payment schedule falls on a weekend or holiday, that date will be advanced to the next business day but the remaining dates in the payment schedule will remain unchanged. The State Controller’s Office (SCO) requires 14 to 21 days to issue payment from the day that requests are received by SCO.

¹⁴ *Approval of the California Advanced Services Fund (CASF) Application Requirements and Scoring Criteria for Awarding CASF Funds* (2008) Cal. P.U.C. Res. No. T-17143 at 4.

¹⁵ The above schedule is contingent on the CASF recipient submitting clear, complete, and error-free invoices to CD. Additional time to process payments may be necessary if CD finds problems with the submitted invoices.

VII. Comments on Draft Resolution

In compliance with P.U. Code § 311(g), a notice letter was emailed on February 4, 2014, informing all applicants filing for CASF funding and parties on the service list of R.06-06-028 and the CASF distribution list of the availability of the draft of this Resolution for public comments at the Commission's website <http://www.cpuc.ca.gov/PUC/documents/>. This letter also informed parties that the final conformed Resolution adopted by the Commission will be posted and will be available at this same website.

The Commission received four letters supporting a higher funding level for the Sunesys Project, urging the Commission to increase CASF funding to 83% of the total project costs, and noting that there are strong justifications to support the higher award. These letters were from: Mayor Karina Cervantes of Watsonville, dated February 14, 2014; Supervisor Zack Friend of the County of Santa Cruz, dated February 19, 2014; Mayor Chuck Della Sala of Monterey, dated February 24, 2014; and Mayor Maria Orozco of Gonzales, dated February 26, 2014. All these letters point to a lack of broadband access in the economically depressed communities and how the Sunesys project would serve thousands of students attending K-12 schools, community colleges and universities, parents, businesses, and employees in the area. The letters also contend that these communities suffer from a lower quality of health care and public safety because residents and the agencies they rely upon cannot take full advantage of technological advancements.

VIII. Findings

1. On May 10, 2012, the Commission approved Resolution T-17362 which established the application deadlines for the CASF Broadband Infrastructure Grant Account and the Revolving Loan Account as follows: October 1, 2012, for unserved areas; February 1, 2013, for underserved areas not previously funded by the CASF and hybrid projects that cover both unserved and underserved areas; and, a date to be determined for projects in underserved areas where the existing broadband infrastructure was partially funded by a CASF grant.
2. Sunesys filed an application for CASF funding for its Connected Central Coast Project on February 1, 2013. The Sunesys Project will build a 91.18 mile middle-mile backhaul network from Santa Cruz to Soledad and extend high-speed internet service to 430 square miles covering Castroville and the CA156 corridor towards Prunedale, Chualar, Gonzalez, Soledad and Salinas in Central Coast. The proposed network will pass through 1,232 unserved and 445 underserved census blocks. This backhaul has the potential to service a number of unserved and underserved adjacent census blocks.
3. This expansion will have the potential to enable last mile providers to bring high speed Internet access to 11,124 households in the Central Coast area. The CBGs impacted by the project are specified in Appendix B.
4. CD posted the map, CBGs and zip codes lists by county for the Sunesys Project on the Commission's CASF website page under "Pending New CASF Applications to Offer Broadband as of February 11, 2013." CD received challenges from Comcast and Verizon to the proposed project areas. Verizon asserted that it provides Internet service in this area at served speeds. However, Verizon did not respond to CD staff inquiries to validate its challenge, and neither CD staff's mobile drive tests nor the interpolation model based on these tests validated Verizon's maximum advertised speed in the updated project area; therefore CD staff considers the challenge unsubstantiated.
5. CD reviewed and analyzed data submitted for the Sunesys Project CASF grant application to determine the project's eligibility for CASF funding. This data includes, but is not limited to: proof of a CPCN from the Commission; descriptions of current and proposed broadband infrastructure; geographic information system (GIS) formatted shapefiles mapping the subject areas; assertion that the area is unserved and underserved; number of potential subscriber households and average incomes; project construction schedule; project budget; proposed pricing and commitment period for new subscribers; and financial viability of the applicant.

6. CD reviewed the submitted shapefiles which mapped the proposed broadband deployment using United States 2010, Census data and the California Broadband Availability Map, which contains broadband availability data as of June 30, 2012. This helped to verify the existence or non-existence of broadband service areas and broadband speeds, where available.
7. Based on its review, CD determined that the project qualifies for funding under D.12-02-015 and recommends Commission approval of CASF funding for the Sunesys Project.
8. CD staff revised and reduced the CASF funding to \$7,352,164 for the Sunesys Project after pro-rating the costs associated with the middle-mile segments that transit served areas of Santa Cruz, Watsonville, Gonzales, and Chualar. This revised amount represents 60% of the pro-rated and adjusted total project cost of \$12,253,606.
9. Sunesys has stated that a higher level of CASF funding is needed for the project to move forward. However, CD staff is constrained by program requirements and recommends CASF funding at the maximum allowed for unserved and underserved areas as set forth in D.12-02-015.
10. At 60% CASF funding and at the proposed wholesale price of \$8.50 per fiber mile per month it would take Sunesys 19 years to obtain payback of their capital investment. To make the project financially viable in a 5 year period, Sunesys has estimated that it will need to charge last mile providers a higher wholesale price of at minimum \$34 per fiber mile per month.
11. A higher wholesale price above the \$8.50 per fiber mile per month will negatively impact existing CASF last-mile project proposals in the area from ISP Surfnet that proposes to bring broadband service to 398 households in Monterey County.
12. Sunesys is required to post a performance bond if all the project's matching funds do not come from its existing capital budget.
13. Sunesys is required to comply with all guidelines, requirements, and conditions associated with the granting of CASF funds as specified in D.12-02-015 and must submit the FCC Form 477, as specified in Resolution T-17143.
14. Sunesys proposes to conduct all work in 24 months.
15. This project is subject to the California Environmental Quality Act (CEQA) review and must abide by the requirements set forth in the CEQA Section of this Resolution.

16. A notice letter was emailed on February 4, 2014, informing all applicants filing for CASF funding, parties on the service list of R.06-06-028, and the CASF distribution list of the availability of the draft of this Resolution for public comments at the Commission's website <http://www.cpuc.ca.gov/PUC/documents/>. This letter also informed parties that the final conformed Resolution adopted by the Commission will be posted and available at this same website.

17. The Commission received four letters supporting the Sunesys Project and urging the Commission to approve a higher CASF funding level at 83% of the total project cost of \$13.3 million. These letters were from: Mayor Karina Cervantes of Watsonville, dated February 14, 2014; Supervisor Zack Friend of the County of Santa Cruz, dated February 19, 2014; Mayor Chuck Della Sala of Monterey, dated February 24, 2014; and Mayor Maria Orozco of Gonzales, dated February 26, 2014. All support letters are discussed in Section VII of this resolution.

18. The Commission finds CD's recommendation to fund the Sunesys Project as summarized in Appendix A to be reasonable and consistent with Commission orders and, therefore, adopts such recommendation.

THEREFORE, IT IS ORDERED that:

1. The Commission shall award from the CASF to Sunesys up to \$7,352,164 for the Sunesys LCC unserved and underserved area broadband project as described herein and summarized in Appendix A of this Resolution.
2. The program fund payment of up to \$7,352,164 for this unserved and underserved project shall be paid out of the CASF fund in accordance with the guidelines adopted in D.12-02-015 and in accordance with the compliance of avoidance measures described in this Resolution.
3. Payments to the CASF recipient shall be in accordance with Section XI of Appendix 1 of D.12-02-015 and in accordance with the process defined in the "Payments to CASF Recipients" section of this Resolution.
4. Sunesys shall post a performance bond if the project's matching funds do not come from its capital budget.
5. The CASF fund recipient, Sunesys, shall comply with all guidelines, requirements and conditions associated with the CASF funds award as specified in D.12-02-015 and must submit the FCC Form 477, as specified in Resolution T-17143.

This Resolution is effective today.

I hereby certify that this Resolution was adopted by the Public Utilities Commission at its regular meeting on April 10, 2014. The following Commissioners approved it:

PAUL CLANON
Executive Director

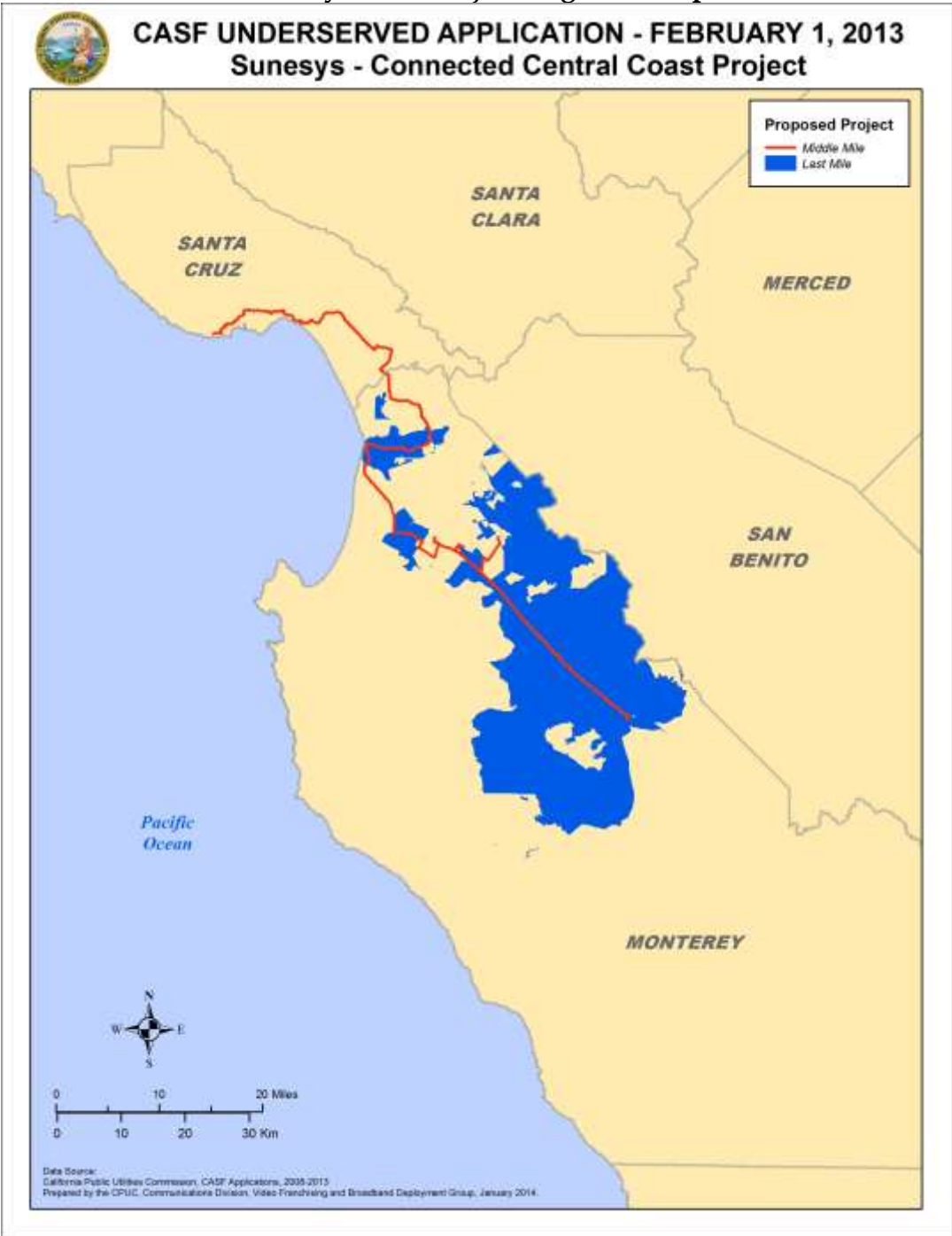
**APPENDIX A
 Resolution T- 17429
 Sunesys, Inc. Project
 Key Information**

| Project Name | | Sunesys, Inc., Project | |
|--|-------------|--|-------------|
| Project Plan | | This project will build a 91.18 mile middle-mile backhaul network from Santa Cruz to Soledad, and extend high-speed internet service to 430 square miles covering portions of the Central Coast between Salinas and Soledad in Santa Cruz and Monterey Counties. The proposed network will pass through 1,232 unserved and 445 underserved census blocks. Additionally, we believe this backhaul has the potential to service a number of unserved and underserved adjacent census blocks. | |
| Project Size (in square miles) | | 430 | |
| Download / upload speed (in Mbps) | | Over 100 Gbps | |
| Location | | Connected Central Coast | |
| Community Name | | Castroville and the CA156 corridor towards Prunedale, Chualar, Gonzalez, Soledad and Salinas | |
| CBGs / Household Income | | 60530103051 | \$80,500.00 |
| | | 60530103052 | \$84,773.00 |
| | | 60530104001 | \$48,566.00 |
| | | 60530104002 | \$44,808.00 |
| | | 60530104003 | \$37,258.00 |
| | | 60530104004 | \$41,699.00 |
| | | 60530106061 | \$67,083.00 |
| | | 60530108041 | \$39,048.00 |
| | | 60530108042 | \$48,818.00 |
| | | 60530108043 | \$48,750.00 |
| | | 60530109001 | \$0.00 |
| | | 60530111011 | \$53,929.00 |
| | | 60530111012 | \$59,113.00 |
| | 60530111013 | \$29,206.00 | |

Resolution T-17429
 CD/SIM

| | | | |
|--|-------------|--------------|--|
| | 60530111021 | \$41,285.00 | |
| | 60530111022 | \$60,993.00 | |
| | 60530111023 | \$77,432.00 | |
| | 60530146012 | \$46,500.00 | |
| | 60530147001 | \$70,341.00 | |
| | 60530147002 | \$87,143.00 | |
| | 60530147003 | \$71,991.00 | |
| | 60530147004 | \$54,063.00 | |
| | 60530148001 | \$56,500.00 | |
| | 60530148002 | \$49,141.00 | |
| | 60530148003 | \$64,492.00 | |
| | | 93907 | |
| ZIP Codes | | 93905 | |
| | | 93926 | |
| | | 93960 | |
| | | 95039 | |
| | | 95012 | |
| | | 93925 | |
| | | 93908 | |
| Estimated Potential Subscriber Size Households/ Subscribers | | 11,124 | |
| Deployment Schedule (from Commission approval date) | | 24 months | |
| Proposed Project Budget | | \$13,300,000 | |
| Total CASF Eligible Project Costs | | \$12,253,606 | |
| Amount of CASF Funds Approved (60%) | | \$7,352,164 | |
| Internally funded (40%) | | \$4,901,442 | |

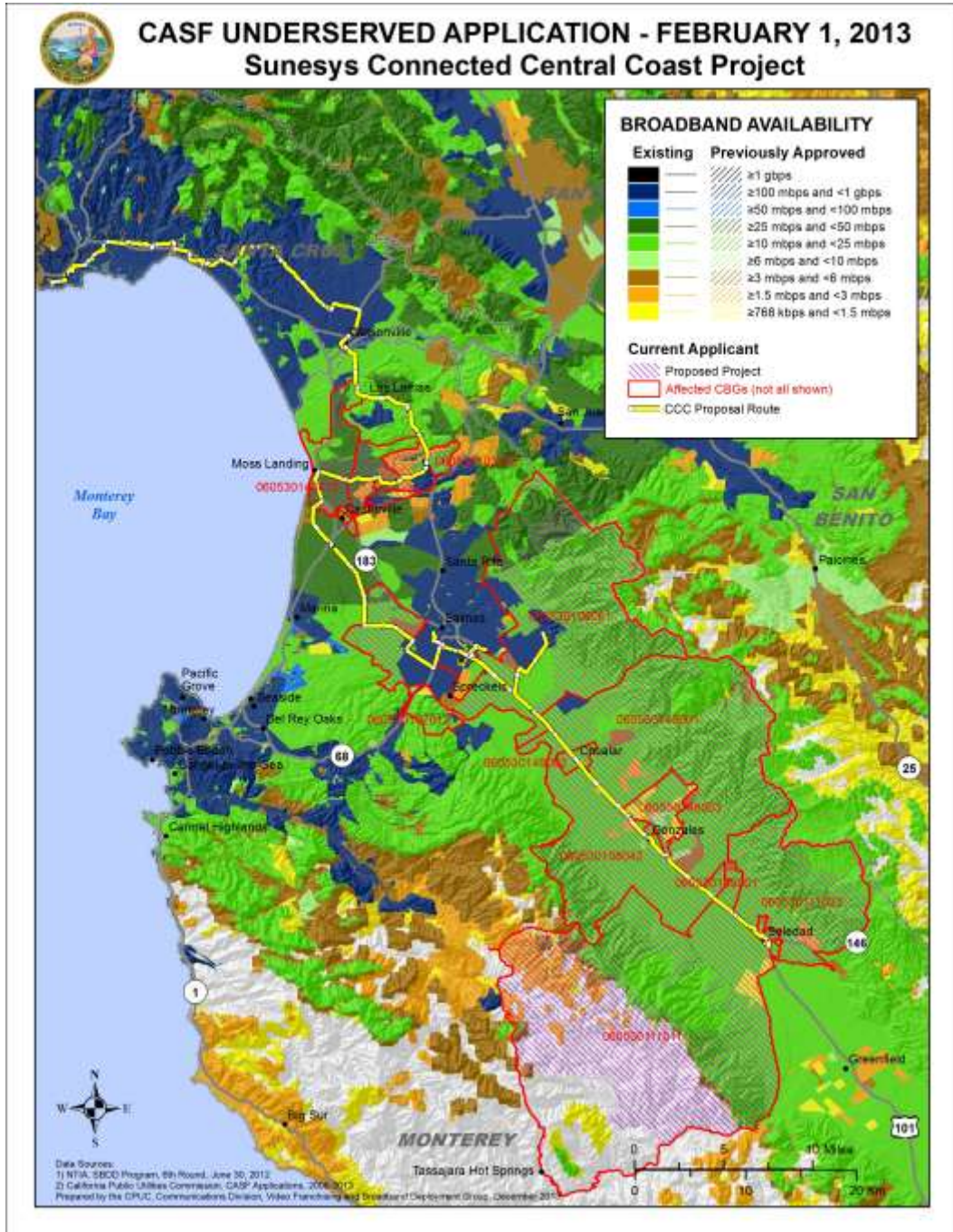
APPENDIX A
Resolution T-17429
Sunesys, Inc., Project Regional Map



APPENDIX A

Resolution T-17429

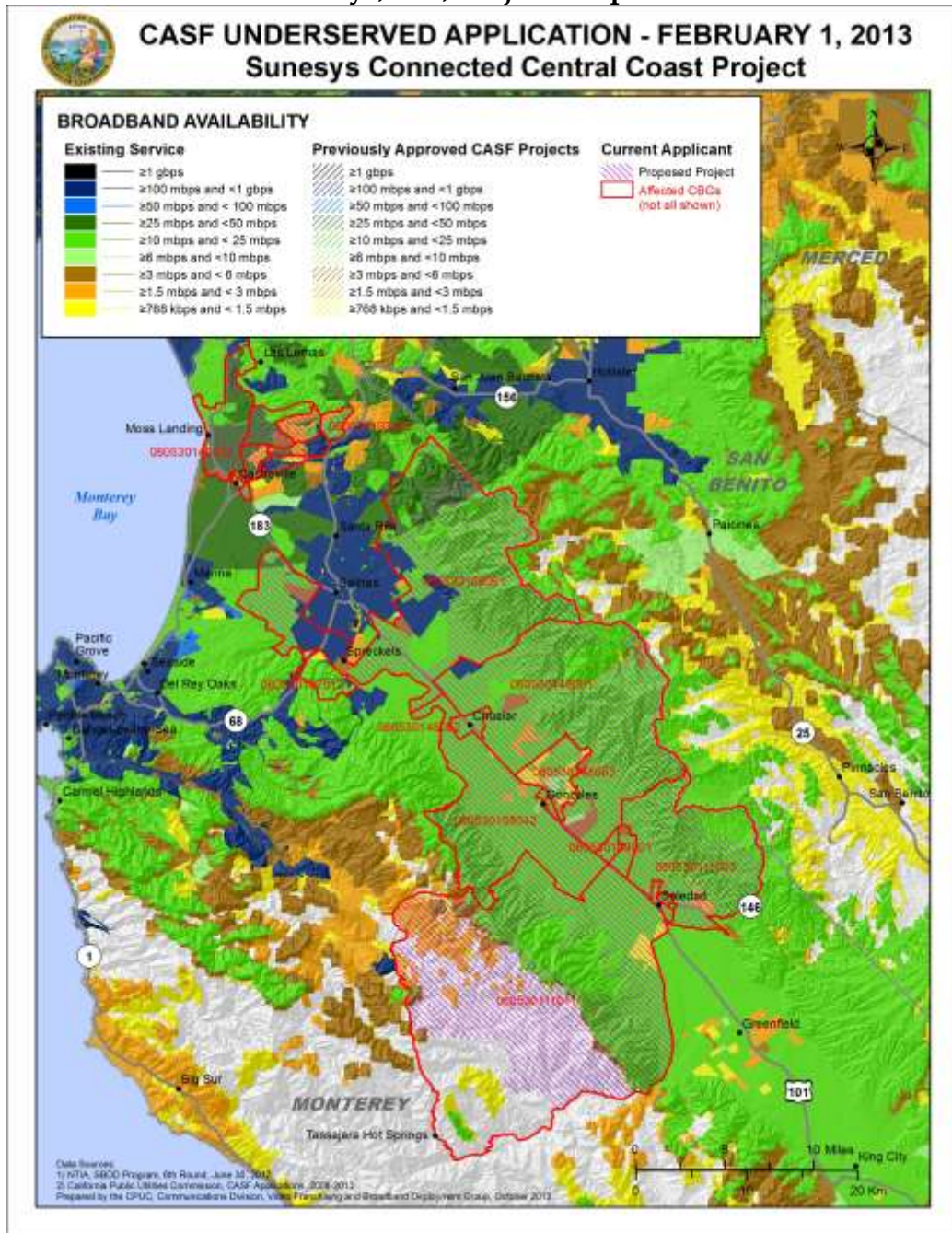
Sunesys, Inc., Project Route Map



APPENDIX A

Resolution T- 17429

Sunesys, Inc., Project Shapefiles



END OF APPENDIX A

APPENDIX B
Resolution T-17429
List of Census Block Groups

| Covered CBGs | But not including these CBs |
|--------------|--|
| 060530103051 | 060530103051000, 060530103051008 |
| 060530103052 | 060530103052011 |
| 060530104001 | |
| 060530104002 | |
| 060530104003 | |
| 060530104004 | |
| 060530106061 | 060530106061004, 060530106061007, 060530106061010, 060530106061012, 060530106061022, 060530106061055, 060530106061090, 060530106061091, 060530106061095, 060530106061111, 060530106061113, 060530106061117, 060530106061140, 060530106061141, 060530106061151, 060530106061153, 060530106061154, 060530106061156, 060530106061191, 060530106061192, 060530106061208, 060530106061209, 060530106061210, 060530106061211, 060530106061212, 060530106061213, 060530106061214, 060530106061216, 060530106061217, 060530106061219, 060530106061221, 060530106061233, 060530106061234, 060530106061240, 060530106061241, 060530106061243, 060530106061258, 060530106061260, 060530106061295, 060530106061297 |
| 060530108041 | |
| 060530108042 | |
| 060530108043 | |
| 060530109001 | |
| 060530111011 | 060530111011106, 060530111011143 |
| 060530111012 | 060530111012005 |
| 060530111013 | |
| 060530111021 | |
| 060530111022 | |
| 060530111023 | 060530111023027, 060530111023032 |
| 060530146012 | 060530146012000, 060530146012001, 060530146012002, 060530146012003, 060530146012004, 060530146012005, 060530146012006, 060530146012008, 060530146012009, 060530146012010, 060530146012011, 060530146012012, 060530146012013, 060530146012014, 060530146012016, 060530146012017, 060530146012018, 060530146012019, 060530146012020, 060530146012021, 060530146012022, 060530146012023, 060530146012024, 060530146012025, 060530146012026, 060530146012027, 060530146012052, 060530146012053, 060530146012054, 060530146012070, 060530146012071, 060530146012072, 060530146012073 |
| 060530147001 | 060530147001000, 060530147001001, 060530147001002, 060530147001003, 060530147001004, 060530147001010, 060530147001011 |
| 060530147002 | 060530147002006, 060530147002009 |
| 060530147003 | 060530147003000 |
| 060530147004 | |
| 060530148001 | 060530148001000, 060530148001005, 060530148001034, 060530148001035, 060530148001050, 060530148001088 |
| 060530148002 | |
| 060530148003 | |

END OF APPENDIX B

APPENDIX C
Resolution T-17429

Different Price Scenarios

| Supporting Providers | Miles | Annual Supporting Providers Contribution@ \$8.50 / Mile / Month | Annual Supporting Providers Contribution@ \$11 / Mile / Month | Annual Supporting Providers Contribution @ \$34 / Mile / Month |
|---|--------|---|---|--|
| Last Mile Provider A Note: Sunesys estimates 15 Last Mile Providers/anchors will sign up for backhaul services | 182.35 | \$18,600 | \$24,070 | \$74,399 |
| Total Annual Income from Service Providers (Based on 15 last miles providers/anchors obtaining backhaul) | | \$278,996 | \$361,053 | \$1,115,982 |
| Project Cost | | \$13,300,000 | \$13,300,000 | \$13,300,000 |
| 60% Funding | | \$7,980,000 | \$7,980,000 | \$7,980,000 |
| Differential | | \$5,320,000 | \$5,320,000 | \$5,320,000 |
| Payback Period (months) | | 228.8 | 176.8 | 57.2 |

| | |
|-------------------------|--------------|
| 90% Funding | \$11,970,000 |
| Differential | \$1,330,000 |
| Payback Period (months) | 57.2 |

| | |
|-------------------------|--------------|
| 83% Funding | \$11,028,245 |
| Differential | \$2,271,755 |
| Payback Period (months) | 97.1 |

END OF APPENDIX C

APPENDIX D
Resolution T-17429

Table 1 | Emergency First Responders' Agencies

| SPECIFIC_U | NAME | SUBNAME | | CITY | ZIP | County |
|-----------------|-----------------------------------|--------------------|-------------------------|---------------|-------|----------|
| Fire Station | SRFD | STATION 1 | 19900 PORTOLA DRIVE | | 93908 | Monterey |
| Fire Station | FIRE ST # 2 | | 582 HAWTHORNE STREET | | 93940 | Monterey |
| Fire Station | CARMEL VALLEY FIRE DEPARTMENT | | 26 VIA CONTENTA | | 93924 | Monterey |
| Fire Station | City of Monterey - Fire Station | | 401 DELA VINA AVENUE | | 93940 | Monterey |
| Fire Station | CARMEL VALLEY FIRE DISTRICT | MID VALLEY STATION | 8455 CARMEL VALLEY ROAD | | 93923 | Monterey |
| Fire Station | NCFPD | STATION 1 | 11200 SPEEGLE STREET | | 95012 | Monterey |
| Fire Station | NCFPD | STATION 2 | 17639 PESANTE ROAD | | | Monterey |
| Fire Station | NCFPD | STATION 3 | 301 ELKHORN ROAD | | | Monterey |
| Fire Station | CAL FIRE | AROMAS | 492 CARPENTERIA ROAD | | | Monterey |
| Fire Station | CAL FIRE | CARMEL HILL | 4180 17 MILE DRIVE | | | Monterey |
| Fire Station | CAL FIRE | KING CITY | 743 REICH STREET | | | Monterey |
| Fire Station | CAL FIRE | PEBBLE BEACH | 3101-B FOREST LAKE ROAD | | | Monterey |
| Fire Station | CAL FIRE | RIO ROAD | 3775 RIO ROAD | | | Monterey |
| Fire Station | CAL FIRE | GONZALES | HWY 101 | | | Monterey |
| Fire Station | MARINA FIRE DEPARTMENT | MARINA | 211 HILLCREST AVE | | | Monterey |
| Fire Station | SEASIDE FIRE DEPARTMENT | SEASIDE | 1635 BROADWAY AVE | | | Monterey |
| Fire Station | GONZALES FIRE DEPARTMENT | GONZALES | 325 CENTER ST | | | Monterey |
| Law Enforcement | SALINAS POLICE DEPARTMENT | | 113 CENTRAL AVE | SALINAS | | Monterey |
| Law Enforcement | MONTEREY COUNTY SHERIFF | | 1414 NATIVIDAD ROAD | SALINAS | | Monterey |
| Law Enforcement | CALIFORNIA HIGHWAY PATROL | | 960 EAST BLANCO ROAD | SALINAS | | Monterey |
| Law Enforcement | MONTEREY COUNTY SHERRIFF | | 1200 AGUAJITO ROAD #002 | MONTEREY | | Monterey |
| Law Enforcement | MONTEREY POLICE DEPARTMENT | | 351 MADISON STREET | MONTEREY | | Monterey |
| Law Enforcement | SEASIDE POLICE DEPARTMENT | | 440 HARCOURT AVE | SEASIDE | | Monterey |
| Law Enforcement | SEASIDE POLICE DEPARTMENT | | 986 HILBY AVE | SEASIDE | | Monterey |
| Law Enforcement | MONTEREY COUNTY COURTHOUSE | | 1200 AGUAJITO ROAD | MONTEREY | | Monterey |
| Law Enforcement | SAND CITY POLICE DEPT | | 1 SYLVAN WAY | SAND CITY | | Monterey |
| Law Enforcement | MONTEREY COUNTY SHERRIFF | | 240 CHURCH ST | SALINAS | | Monterey |
| Law Enforcement | PACIFIC GROVE POLICE DEPARTMENT | | 580 PINE AVE | PACIFIC GROVE | | Monterey |
| Law Enforcement | DEL REY OAKS POLICE DEPARTMENT | | 650 CANYON DEL REY BLVD | MONTEREY | | Monterey |
| Law Enforcement | CITY OF SOLEDAD POLICE DEPARTMENT | | 236 MAIN STREET | SOLEDAD | | Monterey |
| Law Enforcement | KING CITY POLICE DEPARTMENT | | 415 BASSETT STREET | KING CITY | | Monterey |
| Law Enforcement | GREENFIELD POLICE DEPARTMENT | | 215 EL CAMINO REAL | GREENFIELD | | Monterey |
| Law Enforcement | KING CITY CHP | | 2 BROADWAY CIRCLE | KING CITY | | Monterey |

Resolution T-17429

CD/SIM

| | | | | | | |
|-----------------|--|---------|-------------------------|----------------|---------------|------------|
| Law Enforcement | MONTEREY COUNTY SHERRIFF | | 250 FRANCISCAN WAY | KING CITY | | Monterey |
| Law Enforcement | CSUMB CAMPUS POLICE | | BUILDING 82, 3RD ST | SEASIDE | | Monterey |
| Law Enforcement | MARINA POLICE DEPARTMENT | | 211 HILLCREST AV | MARINA | | Monterey |
| Law Enforcement | GONZALES PD | | 109 4TH ST | GONZALES | | Monterey |
| Fire Station | Big Creek FFS | Stn. 33 | 240 Swanton Rd. | Davenport | 95017 | Santa Cruz |
| Fire Station | Burrell FFS | stn. 47 | 25050 Highland Way | Los Gatos | 95030 | Santa Cruz |
| Fire Station | Corralitos FFS | Stn. 41 | 120 Eureka Canyon Rd. | Watsonville | 95076 | Santa Cruz |
| Fire Station | Cordilleras FFS | Stn. 18 | 300 Edmonds Rd. | Redwood City | 94062 | Santa Cruz |
| Fire Station | Felton FFS | stn. 31 | 6059 Highway 9 | Felton | 95018-0316 | Santa Cruz |
| Fire Station | Jamison Creek FFS | stn. 23 | 16115 Jamison Creek Rd. | Boulder Creek | (831)338-4422 | Santa Cruz |
| Fire Station | Pajaro Dunes FFS | Stn. 42 | 2661 Beach Rd. | Watsonville | 95076 | Santa Cruz |
| Fire Station | Pescadero FFS | Stn. 59 | 1200 Pescadero Rd. | Pescadero | 94060 | Santa Cruz |
| Fire Station | Skylonda FFS | Stn. 58 | 17290 Skyline Blvd. | Woodside | 94062 | Santa Cruz |
| Fire Station | Soquel FFS | Stn. 43 | 4750 Old San Jose Rd. | Soquel | 95073 | Santa Cruz |
| Fire Station | Soquel Demo State Forest | | 4750 Old San Jose Rd. | Soquel | 95073 | Santa Cruz |
| Fire Station | Ben Lomond Camp | Stn. 80 | 13575 Empire Grade Rd. | Santa Cruz | 95060 | Santa Cruz |
| Fire Station | Pajaro Valley Fire Protection District | Stn. 61 | 762 Casserly Rd. | Watsonville | 95076 | Santa Cruz |
| Fire Station | Bonny Doon | Co. 32 | 975 Martin Rd. | Santa Cruz | 95060 | Santa Cruz |
| Fire Station | Bonny Doon | Co. 34 | 7276 Empire Grade Rd | Santa Cruz | 95060 | Santa Cruz |
| Fire Station | Davenport | Co. 37 | 75 Marine View Ave | Santa Cruz | 95060 | Santa Cruz |
| Fire Station | Paradise Park | Co. 38 | 211 Keystone Way | Santa Cruz | 95060 | Santa Cruz |
| Fire Station | MBA | Co. 46 | 783 San Andreas Rd. | La Selva Beach | 95076 | Santa Cruz |
| Fire Station | Saratoga Summit | Stn. 21 | 12900 Skyline Blvd. | Los Gatos | 95030 | Santa Cruz |
| Fire Station | Las Cumbres | Co. 26 | 18271 Las Cumbres Rd. | Los Gatos | 95030 | Santa Cruz |
| Fire Station | Mount Madonna | Stn. 62 | 445 Summit Rd | | | Santa Cruz |
| Fire Station | Loma Prieta | Stn. 44 | 17445 Old Summit Rd | Los Gatos | | Santa Cruz |
| Fire Station | Watsonville 2 | WTS 2 | 370 Airport Blvd | Watsonville | 95076 | Santa Cruz |
| Fire Station | Scotts Valley 1 | SCO 1 | 7 Erba Ln | Scotts Valley | 95066 | Santa Cruz |
| Fire Station | Central 2 | CTL 2 | 3445 Thurber Ln | Santa Cruz | 95065 | Santa Cruz |
| Fire Station | Central 3 | CTL 3 | 4747 Soquel Dr | Santa Cruz | 95073 | Santa Cruz |
| Fire Station | Central 4 | CTL 4 | 405 Capitola Av | Capitola | 95010 | Santa Cruz |
| Fire Station | Central 1 | CTL 1 | 930 17th Av | Santa Cruz | 95062 | Santa Cruz |
| Fire Station | Watsonville 1 | WTS 1 | 115 Second St | Watsonville | 95076 | Santa Cruz |
| Fire Station | Boulder Creek 1 | BOU 1 | 12230 Central Av | Boulder Creek | 95006 | Santa Cruz |
| Fire Station | Felton 1 | FEL 1 | 131 Kirby St | Felton | 95018 | Santa Cruz |
| Fire Station | Branciforte 1 | BRN 1 | 2711 Branciforte Dr | Santa Cruz | 95065 | Santa Cruz |
| Fire Station | Aptos LaSelva 3 | APT 3 | 312 Estrella AV | LaSelva | 95076 | Santa Cruz |

Resolution T-17429
CD/SIM

| | | | | | | |
|--------------------|--|-------|-------------------------|---------------|-------|------------|
| | | | | Bch | | |
| Fire Station | Aptos LaSelva 2 | APT 2 | 300 Bonita Dr | LaSelva Bch | 95003 | Santa Cruz |
| Fire Station | Aptos LaSelva 1 | APT 1 | 6934 Soquel Dr | Aptos | 95003 | Santa Cruz |
| Fire Station | Ben Lomond 1 | BEN 1 | 9430 Highway 9 | Ben Lomond | 95005 | Santa Cruz |
| Fire Station | Santa Cruz City 3 | SCZ 3 | 335 Younglove Av | Santa Cruz | 95060 | Santa Cruz |
| Fire Station | Santa Cruz City 2 | SCZ 2 | 1103 Soquel Av | Santa Cruz | 95062 | Santa Cruz |
| Fire Station | Zayante 1 | ZAY 1 | 7700 East Zayante Rdf | Felton | 95018 | Santa Cruz |
| Fire Station | UCSC 1 | UCZ 1 | 1156 High St | Santa Cruz | 95064 | Santa Cruz |
| Fire Station | Santa Cruz City 1 | SCZ 1 | 711 Center St | Santa Cruz | 95060 | Santa Cruz |
| Fire Station | Zayante 2 | ZAY 2 | x-streets: Lompico at C | | | Santa Cruz |
| Fire Station | Branciforte 2 | BRN 2 | 310 Rider Ridge Rd | Santa Cruz | 95065 | Santa Cruz |
| Fire Station | Scotts Valley 3 | SCO 3 | 251 Glenwood Dr | Scotts Valley | 95066 | Santa Cruz |
| Fire Station | Zayante 3 | ZAY 3 | 15585 Upper Zayante Rd | | | Santa Cruz |
| Police Station | Watsonville Police Station | | 215 Union St | Watsonville | | Santa Cruz |
| Police Sub-Station | Watsonville High School Police Sub-Station | | 250 East Beach St | Watsonville | | Santa Cruz |
| Police Sub-Station | Pajaro Valley High School Police Sub-Station | | 500 Harkins Slough Rd | Watsonville | | Santa Cruz |
| Police Sub-Station | East Lake Village Shopping Center Police Sub-Station | | 936 East Lake Ave | Watsonville | | Santa Cruz |
| Police Sub-Station | Police Activities League Facility | | 130 Rodriguez St | Watsonville | | Santa Cruz |
| Police Sub-Station | Freedom Library Police Sub-Station | | 2021 Freedom Blvd | Watsonville | | Santa Cruz |
| Police Station | City of Santa Cruz Police | | 155 Center St | Santa Cruz | | Santa Cruz |
| Police Station | Capitola Police Station | | 422 Capitola Ave | Capitola | | Santa Cruz |
| Police Station | Scotts Valley Police Station | | 1 Civic Center Dr | Scotts Valley | | Santa Cruz |
| Main Office | Santa Cruz Sheriff | | 701 Ocean St, Room 340 | Santa Cruz | | Santa Cruz |
| Service Center | Santa Cruz Sheriff - Aptos Service Center | | 19 D Rancho Del Mar | Aptos | | Santa Cruz |
| Detention Center | Santa Cruz Sheriff - Roundtree Men's Facility | | 90 Roundtree Ln | Watsonville | | Santa Cruz |
| Service Center | Santa Cruz Sheriff - South County Service Center | | 790 Green Valley Rd | Watsonville | | Santa Cruz |
| Service Center | Santa Cruz Sheriff - Rural Crimes Center | | 562 Casserly Rd | Watsonville | | Santa Cruz |
| Service Center | Santa Cruz Sheriff - Blaine St Women's Center | | 144 Blaine St | Santa Cruz | | Santa Cruz |
| Service Center | Santa Cruz Sheriff - Live Oak/Soquel Service Center | | 870 B 17th Ave | Santa Cruz | | Santa Cruz |
| Detention Center | Santa Cruz Sheriff - Main Jail | | 259 Water St | Santa Cruz | | Santa Cruz |
| Service Center | Santa Cruz Sheriff - San Lorenzo Valley Service Center | | 6059 Highway 9 | Felton | | Santa Cruz |
| Service Center | Santa Cruz Sheriff - Summit Service Center | | 23800 Summit Rd | Los Gatos | | Santa Cruz |

Table 2 | Community Anchor Institutions

| ANCHORNAME | ADDRESS | CITY | STATE | ZIP |
|---|--------------------------------------|---------------|-------|-------|
| ABOVE THE LINE -GROUP HOME SOCIETY | 2716 FREEDOM BLVD. | CORRALITOS | CA | 95076 |
| ALISAL COMMUNITY | 1437 DEL MONTE AVE | SALINAS | CA | 93905 |
| ALISAL HIGH | 777 WILLIAMS RD | SALINAS | CA | 93905 |
| ALISAL UNION | 1205 EAST MARKET STREET | SALINAS | CA | 93905 |
| ALL SAINTS EPISCOPAL DAY SCHOOL | 8060 CARMEL VALLEY RD. | CARMEL | CA | 93923 |
| ALTERNATIVE FAMILY EDUCATION | 185 BENITO AVE | SANTA CRUZ | CA | 95062 |
| AMERICAN RED CROSS, SANTA CRUZ COUNTY CHAPTER | 2960 SOQUEL AVENUE | SANTA CRUZ | CA | 95062 |
| AMERICAN RED CROSS-MONTEREY CO., CA | 942 LUPIN DRIVE | SALINAS | CA | 93906 |
| AMESTI ELEMENTARY | 25 AMESTI RD | WATSONVILLE | CA | 95076 |
| ANN SOLDO ELEMENTARY | 1140 MENASCO DR | WATSONVILLE | CA | 95076 |
| APTOS HIGH | 7301 FREEDOM BLVD | APTOS | CA | 95003 |
| APTOS JUNIOR HIGH | 1001 HUNTINGTON DR | APTOS | CA | 95003 |
| ARK INDEPENDENT STUDIES | 840 NORTH BRANCIFORTE AVE | SANTA CRUZ | CA | 95062 |
| AROMAS | 365 VEGA ST | AROMAS | CA | 95004 |
| AUDUBON CANYON RANCH, INC.(13935 SONOMA HWY.) | 13935 SONOMA HIGHWAY 12 | STINSON BEACH | CA | 94970 |
| BARDIN ELEMENTARY | 425 BARDIN RD | SALINAS | CA | 93905 |
| BARRIOS UNIDOS INC. | 1817 SOQUEL AVE. | SANTA CRUZ | CA | 95060 |
| BAY VIEW ELEMENTARY | 1231 BAY ST | SANTA CRUZ | CA | 95060 |
| BAY VIEW ELEMENTARY | 680 BELDEN | MONTEREY | CA | 93940 |
| BIG BROTHERS BIG SISTERS OF SANTA CRUZ COUNTY | 1500 41ST AVENUE, SUITE 250 | CAPITOLA | CA | 95010 |
| BIG SUR CHARTER SCHOOL | 47540 HIGHWAY 1 | BIG SUR | CA | 93920 |
| BIG SUR HEALTH CENTER | 46896 HIGHWAY 1 | BIG SUR | CA | 93920 |
| BITTERWATER-TULLY ELEMENTARY | 10 LONOAK RD | KING CITY | CA | 93930 |
| BITTERWATER-TULLY UNION ELEMENTARY | 45980 AIRLINE HWY,, STATE HIGHWAY 25 | KING CITY | CA | 93930 |
| BITTERWATER-TULLY UNION ELEMENTARY SCHOOL DISTRICT | LONOAK ROUTE BOX 10 | KING CITY | CA | 93930 |
| BONNY DOON ELEMENTARY | 1492 PINE FLAT RD | SANTA CRUZ | CA | 95060 |
| BONNY DOON UNION ELEMENTARY | 1492 PINE FLAT ROAD | SANTA CRUZ | CA | 95060 |
| BORONDA COMMUNITY DAY | 1114 FONTES LN | SALINAS | CA | 93907 |
| BORONDA MEADOWS | 915 LARKIN ST | SALINAS | CA | 93907 |
| BOULDER CREEK ELEMENTARY | 400 LOMOND ST | BOULDER CREEK | CA | 95006 |
| BOULDER CREEK ELEMENTARY SCHOOL | 400 LOMOND ST. | BOULDER CREEK | CA | 95006 |
| BRADLEY ELEMENTARY | 321 CORRALITOS RD | WATSONVILLE | CA | 95076 |
| BRADLEY ELEMENTARY | 65600 DIXIE ST | BRADLEY | CA | 93426 |
| BRADLEY UNION ELEMENTARY | 224 DIXIE STREET | BRADLEY | CA | 93426 |
| BRANCIFORTE MIDDLE | 315 POPLAR ST | SANTA CRUZ | CA | 95062 |
| BROOK KNOLL ELEMENTARY | 151 BROOK KNOLL DR | SANTA CRUZ | CA | 95060 |
| BUENA VISTA MIDDLE | 18250 TARA DR | SALINAS | CA | 93908 |
| C. T. ENGLISH MIDDLE | 23800 SUMMIT RD | LOS GATOS | CA | 95033 |
| CABRILLO COLLEGE | 6500 SOQUEL DRIVE | APTOS | CA | 95003 |
| CALABASAS ELEMENTARY | 202 CALABASAS RD | WATSONVILLE | CA | 95076 |
| CALIFORNIA RURAL LEGAL ASSISTANCE, INC. | 2100 GARDEN ROAD, SUITE D | MONTEREY | CA | 93940 |
| CALIFORNIA RURAL LEGAL ASSISTANCE, INC. (3 WILLIAMS RD.) | 3 WILLIAMS ROAD | SALINAS | CA | 93905 |
| CALIFORNIA RURAL LEGAL ASSISTANCE, INC. (501 SOQUEL AVE.) | 501 SOQUEL AVE., SUITE D | SANTA CRUZ | CA | 95062 |
| CALIFORNIA RURAL LEGAL ASSISTANCE, INC.(21 CARR ST.) | 21 CARR STREET | WATSONVILLE | CA | 95076 |
| CANDY BUTLER HIGH | 760 BROADWAY ST | KING CITY | CA | 93930 |
| CAPTAIN COOPER ELEMENTARY | HWY 1 | BIG SUR | CA | 93920 |
| CARMEL ADULT | 8421 CARMEL VALLEY ROAD | CARMEL | CA | 93923 |
| CARMEL HIGH | 3600 OCEAN AVE | CARMEL | CA | 93923 |
| CARMEL MIDDLE | 4380 CARMEL VALLEY RD | CARMEL | CA | 93922 |
| CARMEL RIVER ELEMENTARY | MONTE VERDE ST AND 15TH AVE | CARMEL | CA | 93923 |
| CARMEL UNIFIED | 4380 CARMEL VALLEY ROAD | CARMEL | CA | 93923 |
| CARMEL VALLEY HIGH | 27335 SCHULTE RD | CARMEL | CA | 93923 |
| CARR LAKE COMMUNITY DAY | 10 SHERWOOD PLACE | SALINAS | CA | 93906 |
| CASTROVILLE ELEMENTARY | 11161 MERRITT ST | CASTROVILLE | CA | 95012 |

Resolution T-17429

CD/SIM

| | | | | |
|---|-----------------------------|---------------|----|-------|
| CENTER FOR COMMUNITY ADVOCACY | 22 WEST GABILAN STREET | SALINAS | CA | 93901 |
| CENTER FOR EMPLOYMENT TRAINING | 10 BLANCA LANE | WATSONVILLE | CA | 95076 |
| CENTER FOR EMPLOYMENT TRAINING | 930 LOS COCHES DRIVE | SOLEDAD | CA | 93960 |
| CENTER FOR EMPLOYMENT TRAINING | 421 MONTEREY STREET | SALINAS | CA | 93901 |
| CENTRAL BAY HIGH (CONTINUATION) | 17500 PESANTE RD | SALINAS | CA | 93907 |
| CENTRAL COAST CENTER FOR INDEPENDENT LIVING | 234 CAPITOL ST. STE. A | SALINAS | CA | 93901 |
| CENTRAL COAST CENTER FOR INDEPENDENT LIVING | 234 CAPITOL ST. SUITE A | SALINAS | CA | 93901 |
| CENTRAL COAST HIGH | 225 NORMANDY RD | SEASIDE | CA | 93955 |
| CENTRAL COAST VNA & HOSPICE, INC. | P.O. BOX 2480 | MONTEREY | CA | 93942 |
| CENTRAL COAST YMCA | 117 CLAY ST | SALINAS | CA | 93901 |
| CENTRAL COAST YMCA | 600 CAMINO EL ESTERO | MONTEREY | CA | 93940 |
| CENTRAL COAST YMCA | 27 SUDDEN ST | WATSONVILLE | CA | 95076 |
| CENTRAL COAST YMCA | 560 N WALKER DR | SOLEDAD | CA | 93960 |
| CENTRAL COAST YMCA (HOLLISTER BRANCH) | 351 TRES PINES ROAD | SALINAS | CA | 93901 |
| CESAR CHAVEZ ELEMENTARY | 250 APPLE AVE | GREENFIELD | CA | 93927 |
| CESAR E. CHAVEZ ELEMENTARY | 1225 TOWT ST | SALINAS | CA | 93905 |
| CESAR E. CHAVEZ MIDDLE | 440 ARTHUR RD | WATSONVILLE | CA | 95076 |
| CHALONE HIGH | 690 MAIN ST | SOLEDAD | CA | 93960 |
| CHALONE PEAKS MIDDLE | 667 MEYER ST | KING CITY | CA | 93930 |
| CHARTWELL SCHOOL | 1490 IMPERIAL ST. | SEASIDE | CA | 93955 |
| CHILD DEVELOPMENT INC | 440 JAYNE | KING CITY | CA | 93930 |
| CHUALAR ELEMENTARY | 24285 LINCOLN ST | CHUALAR | CA | 93925 |
| CHUALAR UNION | 24285 LINCOLN STREET | CHUALAR | CA | 93925 |
| CHUALAR UNION ELEMENTARY SCHOOL DISTRICT | P.O. BOX 188 | CHUALAR | CA | 93925 |
| CLINIC DE SALUD DEL VALLE DE SALINAS-KING CITY CLINIC | 223 BASSET STREET | SALINAS | CA | 93905 |
| CLINICA DE SALUD DEL VALLE DE SALINAS - SANBORN CLINIC | 219 N SANBORN RD | SALINAS | CA | 93905 |
| CLINICA DE SALUD DEL VALLE DE SALINAS-ALVIN CLINIC | 620 E. ALVIN DRIVE, SUITE G | SALINAS | CA | 93905 |
| CLINICA DE SALUD DEL VALLE DE SALINAS-CASTROVILLE CLINIC | 10561 MERRITT STREET | SALINAS | CA | 93905 |
| CLINICA DE SALUD DEL VALLE DE SALINAS-CIRCLE CLINIC | 950 CIRCLE DRIVE | SALINAS | CA | 93905 |
| CLINICA DE SALUD DEL VALLE DE SALINAS-GREENFIELD CLINIC | 808 OAK AVENUE | SALINAS | CA | 93905 |
| CLINICA DE SALUD DEL VALLE DE SALINAS-SANBORN CLINIC | 219 N. SANBORN ROAD | SALINAS | CA | 93905 |
| CLINICA DE SALUD DEL VALLE DE SALINAS-SOLEDAD CLINIC | 799 FRONT STREET | SALINAS | CA | 93905 |
| COMMUNITY ACTION BOARD | 150 CHURCH | DAVENPORT | CA | 95017 |
| COMMUNITY ACTION BOARD | 406 MAIN ST # 207 | WATSONVILLE | CA | 95077 |
| COMMUNITY ACTION BOARD | 406 MAIN | WATSONVILLE | CA | 95076 |
| COMMUNITY ACTION BOARD | 501 SOQUEL AVE | SANTA CRUZ | CA | 95062 |
| COMMUNITY ACTION BOARD OF SANTA CRUZ COUNTY, INC. | 406 MAIN STREET, SUITE 207 | WATSONVILLE | CA | 95076 |
| COMMUNITY ACTION BOARD OF SANTA CRUZ COUNTY, INC. (CAPITOLA ROAD EXRENSION) | 522 CAPITOLA ROAD EXTENSION | WATSONVILLE | CA | 95076 |
| COMMUNITY ACTION BOARD OF SANTA CRUZ COUNTY, INC. (CENTER STREET) | 81 CENTER STREET | WATSONVILLE | CA | 95076 |
| COMMUNITY ACTION BOARD OF SANTA CRUZ COUNTY, INC. (CHURCH STREET) | 151 CHURCH STREET | WATSONVILLE | CA | 95076 |
| COMMUNITY ACTION BOARD OF SANTA CRUZ/GEMMA | 522 CAPITOLA RD EXT | SANTA CRUZ | CA | 95062 |
| COMMUNITY BRIDGES | 236 SANTA CRUZ AVENUE | APTOS | CA | 95003 |
| COMMUNITY FOUNDATION OF SANTA CRUZ COUNTY | 7807 SOQUEL DRIVE | APTOS | CA | 95003 |
| COMMUNITY FOUNDATION OF SANTA CRUZ COUNTY/DAVID B. LOVE | 1220 41ST AVE STE I | CAPITOLA | CA | 95010 |
| COMMUNITY HIGH (CONTINUATION) | 1004 DAVID AVE | PACIFIC GROVE | CA | 93950 |
| COMMUNITY HUMAN SERVICES | 2560 GARDEN ROAD | MONTEREY | CA | 93942 |
| COSTANOA CONTINUATION HIGH | 840 NORTH BRANCIFORTE AVE | SANTA CRUZ | CA | 95062 |
| COUNTY OF MONTEREY BRADLEY LIBRARY | 26 CENTRAL AVENUE | SALINAS | CA | 93901 |
| COUNTY OF MONTEREY CASTROVILLE LIBRARY | 26 CENTRAL AVENUE | SALINAS | CA | 93901 |
| COUNTY OF MONTEREY KC LIBRARY CKT. | 26 CENTRAL AVENUE | SALINAS | CA | 93901 |
| COUNTY OF MONTEREY PAJARO LIBRARY | 26 CENTRAL AVENUE | SALINAS | CA | 93901 |
| COUNTY OF MONTEREY SAN ARDO LIBRARY | 26 CENTRAL AVENUE | SALINAS | CA | 93901 |
| COUNTY OF MONTEREY LIBRARIES FRAME RELAY | 26 CENTRAL AVENUE | SALINAS | CA | 93901 |
| COUNTY OF SANTA CRUZ HEALTH SERVICES AGENCY | 12 W. BEACH ST. | WATSONVILLE | CA | 95076 |
| CREEKSIDE ELEMENTARY | 1770 KITTEERY ST | SALINAS | CA | 93906 |
| DE LAVEAGA ELEMENTARY | 1145 MORRISSEY BLVD | SANTA CRUZ | CA | 95065 |

Resolution T-17429

CD/SIM

| | | | | |
|--|---------------------------------|---------------|----|-------|
| DEAF AND HARD OF HEARING SERVICE CENTER, INC.(PAJARO ST., SALINAS) | 339 PAJARO STREET, SUITE B | SALINAS | CA | 93901 |
| DEL MAR ELEMENTARY | 1959 MERRILL ST | SANTA CRUZ | CA | 95062 |
| DEL REY ELEMENTARY | 502 KING ST | KING CITY | CA | 93930 |
| DEL REY WOODS ELEMENTARY | 1281 PLUMAS AVE | SEASIDE | CA | 93955 |
| DIENTES COMMUNITY DENTAL CARE | 1830 COMMERCIAL WAY | SANTA CRUZ | CA | 95065 |
| DR. MARTIN LUTHER KING, JR. ACADEMY | 925 NORTH SANBORN RD | SALINAS | CA | 93905 |
| E. A. HALL MIDDLE | 201 BREWINGTON AVE | WATSONVILLE | CA | 95076 |
| EASTER SEALS CENTRAL CALIFORNIA | 9010 SOQUEL DRIVE | APTOS | CA | 95003 |
| EASTER SEALS CENTRAL CALIFORNIA (HIGHWAY 9, BOULDER CREEK, CA) | 16403 HIGHWAY 9 | APTOS | CA | 95003 |
| ECHO VALLEY ELEMENTARY | 147 ECHO VALLEY RD | SALINAS | CA | 93907 |
| ECOLOGY ACTION OF SANTA CRUZ (211 RIVER STREET) | 211 RIVER STREET | SANTA CRUZ | CA | 95061 |
| EL GABILAN ELEMENTARY | 1256 LINWOOD DR | SALINAS | CA | 93906 |
| EL PAJARO COMMUNITY DEVELOPMENT CORPORATION | 23 E. BEACH ST. STE. 209 | WATSONVILLE | CA | 95076 |
| EL SAUSAL MIDDLE | 1155 EAST ALISAL ST | SALINAS | CA | 93905 |
| ELKHORN ELEMENTARY | 2235 ELKHORN RD | CASTROVILLE | CA | 95012 |
| ESALEN INSTITUTE | HIGHWAY 1 | BIG SUR | CA | 93920 |
| EVERETT ALVAREZ HIGH | 1900 INDEPENDENCE BLVD | SALINAS | CA | 93906 |
| FAIRVIEW MIDDLE | 401 FOURTH ST | GONZALES | CA | 93926 |
| FAMILY SERVICE AGENCY OF THE CENTRAL COAST | 104 WALNUT AVENUE, #208 | SANTA CRUZ | CA | 95060 |
| FISHWISE (500 SEABRIGHT AVE., SANTA CRUZ) | 500 SEABRIGHT AVENUE, SUITE 201 | SANTA CRUZ | CA | 95061 |
| FITCH MIDDLE SCHOOL | P.O. BOX 1031 | MONTEREY | CA | 93942 |
| FOOD BANK FOR MONTEREY COUNTY | 815 W MARKET | SALINAS | CA | 93901 |
| FOOTHILL ELEMENTARY | 1700 VIA CASOLI | MONTEREY | CA | 93940 |
| FOREST GROVE ELEMENTARY | 1065 CONGRESS AVE | PACIFIC GROVE | CA | 93950 |
| FRANK LEDESMA ELEMENTARY | 973 VISTA DE SOLEDAD | SOLEDAD | CA | 93960 |
| FRANK PAUL ELEMENTARY | 1300 RIDER AVE | SALINAS | CA | 93905 |
| FREEDOM ELEMENTARY | 25 HOLLY DR | FREEDOM | CA | 95019 |
| FREMONT ELEMENTARY | 1255 EAST MARKET ST | SALINAS | CA | 93905 |
| GABILAN ELEMENTARY | 330 NORTH WALKER DR | SOLEDAD | CA | 93960 |
| GATEWAY CENTER OF MONTEREY COUNTY, INC. | 850 CONGRESS AVENUE | PACIFIC GROVE | CA | 93950 |
| GATEWAY SCHOOL | 126 EUCALYPTUS AVE. | SANTA CRUZ | CA | 95060 |
| GAULT ELEMENTARY | 1320 SEABRIGHT AVE | SANTA CRUZ | CA | 95062 |
| GAVILAN VIEW MIDDLE | 18250 VAN BUREN AVE | SALINAS | CA | 93906 |
| GEORGE C. MARSHALL ELEMENTARY | 300 NORMANDY RD | SEASIDE | CA | 93955 |
| GEORGE L. MEE MEMORIAL HOSPITAL | 300 CANAL | KING CITY | CA | 93930 |
| GEORGE L. MEE MEMORIAL HOSPITAL | 467 EL CAMINO REAL | GREENFIELD | CA | 93927 |
| GEORGE L. MEE MEMORIAL HOSPITAL | 210 CANAL STREET | KING CITY | CA | 93930 |
| GEORGE L. MEE MEMORIAL HOSPITAL (300 CANAL ST., KING CITY, CA) | 300 CANAL STREET | KING CITY | CA | 93930 |
| GEORGE L. MEE MEMORIAL HOSPITAL (400 CANAL STREET, KING CITY, CA) | 400 CANAL STREET | KING CITY | CA | 93930 |
| GONZALES EVENING HIGH | 650 ELKO STREET | GONZALES | CA | 93926 |
| GONZALES HIGH | 501 FIFTH ST | GONZALES | CA | 93926 |
| GONZALES UNIFIED | 600 ELKO STREET | GONZALES | CA | 93926 |
| GOOD SHEPHERD CATHOLIC SCHOOL | 2727 MATTISON LANE | SANTA CRUZ | CA | 95065 |
| GOODWILL INDUSTRIES OF SANTA CRUZ, MONTEREY & SAN LUIS OBISPO COUNTIES | 350 ENCINAL ST | SANTA CRUZ | CA | 92126 |
| GOODWILL INDUSTRIES OF SANTA CRUZ, MONTEREY & SAN LUIS OBISPO COUNTIES | 249 10TH ST | MARINA | CA | 92126 |
| GOODWILL INDUSTRIES OF SANTA CRUZ, MONTEREY & SAN LUIS OBISPO COUNTIES | 1550 41ST AVE | CAPITOLA | CA | 92126 |
| GOODWILL INDUSTRIES OF SANTA CRUZ, MONTEREY & SAN LUIS OBISPO COUNTIES | 708 E ALISAL ST | SALINAS | CA | 92126 |
| GOODWILL INDUSTRIES OF SANTA CRUZ, MONTEREY & SAN LUIS OBISPO COUNTIES | 729 BROADWAY AVE | SEASIDE | CA | 92126 |
| GOODWILL INDUSTRIES OF SANTA CRUZ, MONTEREY & SAN LUIS OBISPO COUNTIES | 571 LIGHTHOUSE | MONTEREY | CA | 92126 |
| GOODWILL INDUSTRIES OF SANTA CRUZ, MONTEREY & SAN LUIS OBISPO COUNTIES | 1045 N MAIN ST | SALINAS | CA | 92126 |

Resolution T-17429

CD/SIM

| | | | | |
|--|--------------------------------|-------------------|----|-------|
| GOODWILL INDUSTRIES OF SANTA CRUZ, MONTEREY & SAN LUIS OBISPO COUNTIES | 1252 N MAIN | SALINAS | CA | 92126 |
| GOODWILL INDUSTRIES OF SANTA CRUZ, MONTEREY & SAN LUIS OBISPO COUNTIES | 470 MAIN ST | WATSONVILLE | CA | 92126 |
| GOODWILL INDUSTRIES OF SANTA CRUZ, MONTEREY & SAN LUIS OBISPO COUNTIES | 266 RESERVATION RD | MARINA | CA | 92126 |
| GOODWILL INDUSTRIES OF SANTA CRUZ, MONTEREY & SAN LUIS OBISPO COUNTIES | 204 UNION ST | SANTA CRUZ | CA | 92126 |
| GOODWILL INDUSTRIES OF SANTA CRUZ, MONTEREY & SAN LUIS OBISPO COUNTIES | 103 WHISPERING PINES DR | SCOTTS VALLEY | CA | 92126 |
| GRAVES ELEMENTARY | 15 MCFADDEN RD | SALINAS | CA | 93908 |
| GRAVES ELEMENTARY | 15 MCFADDEN ROAD | SALINAS | CA | 93908 |
| GRAVES SCHOOL DISTRICT | BOX 885 | SALINAS | CA | 93902 |
| GREEN ACRES ELEMENTARY | 966 BOSTWICK LN | SANTA CRUZ | CA | 95062 |
| GREENFIELD ELEMENTARY | 490 EL CAMINO REAL | GREENFIELD | CA | 93927 |
| GREENFIELD HIGH | 225 SOUTH EL CAMINO REAL | GREENFIELD | CA | 93927 |
| GREENFIELD UNION ELEMENTARY | 493 EL CAMINO REAL | GREENFIELD | CA | 93927 |
| H. A. HYDE ELEMENTARY | 125 ALTA VISTA ST | WATSONVILLE | CA | 95076 |
| HALL DISTRICT ELEMENTARY | 300 SILL RD | WATSONVILLE | CA | 95076 |
| HAPPY VALLEY ELEMENTARY | 3125 BRANCIFORTE DR | SANTA CRUZ | CA | 95065 |
| HAPPY VALLEY ELEMENTARY | 3125 BRANCIFORTE DRIVE | SANTA CRUZ | CA | 95065 |
| HARBOR HIGH | 300 LA FONDA AVE | SANTA CRUZ | CA | 95062 |
| HARDEN MIDDLE | 1561 MCKINNON ST | SALINAS | CA | 93906 |
| HARRISON MEMORIAL LIBRARY | P.O. BOX 800 | CARMEL BY THE SEA | CA | 93921 |
| HARTNELL COLLEGE | 411 CENTRAL AV | SALINAS | CA | 93901 |
| HARTNELL COMMUNITY COLLEGE - MAIN CAMPUS | 411 CENTRAL AVENUE | SALINAS | CA | 93901 |
| HEALTH PROJECTS CENTER | 1537 PACIFIC AVENUE, SUITE 300 | SANTA CRUZ | CA | 95060 |
| HENRY F. KAMMANN ELEMENTARY | 521 ROCHEX ST | SALINAS | CA | 93906 |
| HIGHLAND ELEMENTARY | 1650 SONOMA AVE | SEASIDE | CA | 93955 |
| HOPE REHABILITATION SERVICES | 220 LINCOLN ST | SANTA CRUZ | CA | 95060 |
| HOPE REHABILITATION SERVICES | 19055 PORTOLA DR | SALINAS | CA | 93908 |
| HOPE REHABILITATION SERVICES | 546 BRUNKEN AVE | SALINAS | CA | 93901 |
| HOPE REHABILITATION SERVICES | 14 CARR ST | WATSONVILLE | CA | 95076 |
| HOPE REHABILITATION SERVICES | 1580 DEL MONTE BLVD | SEASIDE | CA | 93955 |
| HOPE REHABILITATION SERVICES | 8056 VALENCIA ST | APTOS | CA | 95003 |
| HOPE SERVICES | 93 ROUNTREE LN | WATSONVILLE | CA | 95076 |
| HOPE SERVICES | 1 UNIVERSITY WAY | MONTEREY | CA | 93943 |
| HOSPICE OF SANTA CRUZ COUNTY | 940 DISC DRIVE | SCOTTS VALLEY | CA | 95066 |
| IMAGINE SUPPORTED LIVING SERVICES | 1395 41ST AVENUE, SUITE A | CAPITOLA | CA | 95010 |
| IONE OLSON ELEMENTARY | 261 BEACH RD | MARINA | CA | 93933 |
| J. C. CRUMPTON ELEMENTARY | 460 CARMEL AVE | MARINA | CA | 93933 |
| JACK FRANSCIONI ELEMENTARY | 779 ORCHARD LN | SOLEDAD | CA | 93960 |
| JANUS OF SANTA CRUZ | 200 7TH AVENUE, #150 | SANTA CRUZ | CA | 95062 |
| JESSE G. SANCHEZ ELEMENTARY | 901 NORTH SANBORN RD | SALINAS | CA | 93905 |
| JOHN E. STEINBECK ELEMENTARY | 1714 BURLINGTON DR | SALINAS | CA | 93906 |
| KING CITY ADULT | 760 BROADWAY | KING CITY | CA | 93930 |
| KING CITY ELEMENTARY SD | 435 PEARL ST RM 15 | KING CITY | CA | 93930 |
| KING CITY HIGH | 720 BROADWAY ST | KING CITY | CA | 93930 |
| KING CITY JOINT UNION HIGH | 800 BROADWAY STREET | KING CITY | CA | 93930 |
| KING CITY UNION | 435 PEARL STREET | KING CITY | CA | 93930 |
| KINSHIP CENTER | 124 RIVER ROAD | SALINAS | CA | 93908 |
| LA GLORIA ELEMENTARY | 220 ELKO ST | GONZALES | CA | 93926 |
| LA JOYA ELEMENTARY | 55 ROGGE RD | SALINAS | CA | 93906 |
| LA MESA ELEMENTARY | 1 LA MESA WAY | MONTEREY | CA | 93940 |
| LA PAZ MIDDLE | 1300 NORTH SANBORN RD | SALINAS | CA | 93905 |
| LAGUNITA ELEMENTARY | 975 SAN JUAN GRADE RD | SALINAS | CA | 93907 |
| LAGUNITA ELEMENTARY | 975 SAN JUAN GRADE ROAD | SALINAS | CA | 93907 |
| LAKEVIEW MIDDLE | 2350 EAST LAKE AVE | WATSONVILLE | CA | 95076 |
| LANDMARK ELEMENTARY | 235 OHLONE PARKWAY | WATSONVILLE | CA | 95076 |
| LAUREL WOOD ELEMENTARY | 645 LARKIN ST | SALINAS | CA | 93907 |

Resolution T-17429

CD/SIM

| | | | | |
|--|-----------------------------|----------------|----|-------|
| LIBERTY FAMILY ACADEMY | 8515 PRUNEDALE NORTH ROAD | PRUNEDALE | CA | 93907 |
| LINCOLN ELEMENTARY | 705 CALIFORNIA ST | SALINAS | CA | 93901 |
| LIVE OAK ELEMENTARY | 984 BOSTWICK LANE, SUITE 1 | SANTA CRUZ | CA | 95062 |
| LIVE OAK ELEMENTARY | 1916 CAPITOLA RD | SANTA CRUZ | CA | 95062 |
| LOMA PRIETA ELEMENTARY | 23800 SUMMIT RD | LOS GATOS | CA | 95033 |
| LOMA PRIETA JOINT UNION ELEMENTARY | 23800 SUMMIT ROAD | LOS GATOS | CA | 95033 |
| LOMA VISTA ELEMENTARY | 757 SAUSAL DR | SALINAS | CA | 93906 |
| LOS ARBOLES MIDDLE | 294 HILLCREST AVE | MARINA | CA | 93933 |
| LOS PADRES ELEMENTARY | 1130 JOHN ST | SALINAS | CA | 93905 |
| LUTHERAN SOCIAL SERVICES OF SOUTHERN CA (PALMS HIGHWAY, JOSHUA TREE) | 70478-29 PALMS HIGHWAY | ORANGE | CA | 92867 |
| MAIN STREET ELEMENTARY | 3400 NORTH MAIN ST | SOQUEL | CA | 95073 |
| MAIN STREET MIDDLE | 441 MAIN ST | SOLEDAD | CA | 93960 |
| MAR VISTA ELEMENTARY | 6860 SOQUEL DR | APTOS | CA | 95003 |
| MARINA HIGH | 298 PATTON PARKWAY | MARINA | CA | 93933 |
| MARINA VISTA ELEMENTARY | 390 CARMEL AVE | MARINA | CA | 93933 |
| MARINA VISTA SCHOOL | 390 CARMEL AVENUE | MARINA | CA | 93933 |
| MARTIN LUTHER KING | 1713 BROADWAY | SEASIDE | CA | 93955 |
| MCKINNON | 2100 MCKINNON | SALINAS | CA | 93906 |
| MEE MEMORIAL HOSPITAL | 309 MUSTANG CT | KING CITY | CA | 93930 |
| MEE MEMORIAL HOSPITAL | 809 WILLOW | KING CITY | CA | 93930 |
| MID COUNTY CHRISTIAN SCHOOL | 2701 CABRILLO COLLEGE DRIVE | APTOS | CA | 95003 |
| MINTIE WHITE ELEMENTARY | 515 PALM AVE | WATSONVILLE | CA | 95076 |
| MISSION ELEMENTARY | 36825 FOOTHILL RD | SOLEDAD | CA | 93960 |
| MISSION HILL MIDDLE | 425 KING ST | SANTA CRUZ | CA | 95060 |
| MISSION PARK ELEMENTARY | 403 WEST ACACIA ST | SALINAS | CA | 93901 |
| MISSION UNION ELEMENTARY | 36825 FOOTHILL ROAD | SOLEDAD | CA | 93960 |
| MONTEREY ADULT/ROP | 222 CASA VERDE WAY | MONTEREY | CA | 93940 |
| MONTEREY BAY ACADEMY | 783 SAN ANDREAS ROAD | LA SELVA BEACH | CA | 95076 |
| MONTEREY BAY CHARTER SCHOOL | 1004-B DAVID AVENUE | PACIFIC GROVE | CA | 93950 |
| MONTEREY COUNTY FREE LIBRARIES | 550 HARCOURT AV | SEASIDE | CA | 93955 |
| MONTEREY COUNTY FREE LIBRARIES | 188 SEASIDE CIR | MARINA | CA | 93933 |
| MONTEREY COUNTY FREE LIBRARIES | 11140 SPEEGLE | CASTROVILLE | CA | 95012 |
| MONTEREY COUNTY FREE LIBRARY | 188 SEASIDE CIR | MARINA | CA | 93933 |
| MONTEREY COUNTY OFFICE OF EDUCATION | 901 BLANCO CIRCLE | SALINAS | CA | 93912 |
| MONTEREY COUNTY OFFICE OF EDUCATION | P.O. BOX 80851 | SALINAS | CA | 93912 |
| MONTEREY COUNTY SPECIAL EDUCATION | 901 BLANCO CIRCLE | SALINAS | CA | 93912 |
| MONTEREY HIGH | 101 HERRMANN DR | MONTEREY | CA | 93940 |
| MONTEREY PARK ELEMENTARY | 410 SAN MIGUEL AVE | SALINAS | CA | 93901 |
| MONTEREY PENINSULA COLLEGE COMMUNITY COLLEGE DISTRICT | 980 FREMONT STREET | MONTEREY | CA | 93940 |
| MONTEREY PENINSULA UNIFIED | 700 PACIFIC STREET | MONTEREY | CA | 93942 |
| MONTEREY PENINSULA UNIFIED SCHOOL DIST. | P.O. BOX 1031 | MONTEREY | CA | 93942 |
| MONTEREY PENINSULA UNIFIED SCHOOL DISTRICT COMMUNI | 700 PACIFIC ST | MONTEREY | CA | 93940 |
| MONTEREY PENINSULA UNIFIED SCHOOL DISTRICT COMMUNI | 700 PACIFIC ST | MONTEREY | CA | 93940 |
| MONTEREY PUBLIC LIBRARY | 625 PACIFIC STREET | MONTEREY | CA | 93940 |
| MORELAND NOTRE DAME SCHOOL | 133 BRENNAN STREET | WATSONVILLE | CA | 95076 |
| MOUNT MADONNA SCHOOL | 445 SUMMIT ROAD | WATSONVILLE | CA | 95076 |
| MOUNT MADONNA SCHOOL | 491 SUMMIT ROAD | WATSONVILLE | CA | 95076 |
| MOUNT TORO HIGH | 10 SHERWOOD PLACE | SALINAS | CA | 93906 |
| MOUNTAIN ELEMENTARY | 3042 OLD SAN JOSE RD | SOQUEL | CA | 95073 |
| MOUNTAIN ELEMENTARY | 3042 OLD SAN JOSE ROAD | SOQUEL | CA | 95073 |
| NARCONON OF NORTHERN CALIFORNIA | 262 GAFFEY RD. | WATSONVILLE | CA | 95076 |
| NATIONAL STEINBECK CENTER | 1 MAIN STREET | SALINAS | CA | 93901 |
| NATIVIDAD ELEMENTARY | 1465 MODOC AVE | SALINAS | CA | 93906 |
| NATIVIDAD MEDICAL CENTER | 1441 CONSTITUTION BLVD. | SALINAS | CA | 93906 |
| NATIVIDAD MEDICAL CENTER | 1441 CONSTITUTION BL | SALINAS | CA | 93906 |
| NATIVIDAD MEDICAL CENTER | 1757 INDEPENDENCE BL | SALINAS | CA | 93906 |
| NEW BRIGHTON MIDDLE | 250 WASHBURN AVE | CAPITOLA | CA | 95010 |
| NEW REPUBLIC ELEMENTARY | 636 ARCADIA WAY | SALINAS | CA | 93906 |

Resolution T-17429

CD/SIM

| | | | | |
|--|-----------------------------|----------------|----|-------|
| NEW SCHOOL COMMUNITY DAY | 165 HARKINS SLOUGH RD | WATSONVILLE | CA | 95076 |
| NORTH MONTEREY COUNTY ADULT | 17500 PESANTE ROAD | SALINAS | CA | 93907 |
| NORTH MONTEREY COUNTY CENTER FOR INDEPENDENT STUDY | 17500 PESANTE RD | SALINAS | CA | 93907 |
| NORTH MONTEREY COUNTY HIGH | 13990 CASTROVILLE BLVD | CASTROVILLE | CA | 95012 |
| NORTH MONTEREY COUNTY MIDDLE | 10301 SEYMOUR ST | CASTROVILLE | CA | 95012 |
| NORTH MONTEREY COUNTY UNIFIED | 8142 MOSS LANDING ROAD | MOSS LANDING | CA | 95039 |
| NORTH SALINAS HIGH | 55 KIP DR | SALINAS | CA | 93906 |
| OAK AVENUE ELEMENTARY | 1239 OAK AVE | GREENFIELD | CA | 93927 |
| OCEAN ALTERNATIVE EDUCATION CENTER | 984 BOSTWICK LANE, SUITE 6 | SANTA CRUZ | CA | 95062 |
| OHLONE ELEMENTARY | 21 BAY FARMS RD | WATSONVILLE | CA | 95076 |
| O'NEILL SEA ODYSSEY | P.O. BOX 6300 | SANTA CRUZ | CA | 95063 |
| ORD TERRACE ELEMENTARY | 1755 LA SALLE AVE | SEASIDE | CA | 93955 |
| ORD TERRACE ELEMENTARY SCHOOL | P.O. BOX 1031 | MONTEREY | CA | 93942 |
| OSCAR F. LOYA ELEMENTARY | 1505 COUGAR DR | SALINAS | CA | 93905 |
| PACIFIC COAST CHRISTIAN ACADEMY | 381 SAN JUAN GRADE ROAD | SALINAS | CA | 93906 |
| PACIFIC ELEMENTARY | 50 OCEAN ST | DAVENPORT | CA | 95017 |
| PACIFIC ELEMENTARY | 50 OCEAN STREET | DAVENPORT | CA | 95017 |
| PACIFIC GROVE ADULT | 1025 LIGHTHOUSE AVENUE | PACIFIC GROVE | CA | 93950 |
| PACIFIC GROVE HIGH | 615 SUNSET DR | PACIFIC GROVE | CA | 93950 |
| PACIFIC GROVE MIDDLE | 835 FOREST AVE | PACIFIC GROVE | CA | 93950 |
| PACIFIC GROVE PUBLIC LIBRARY | 550 CENTRAL AVE. | PACIFIC GROVE | CA | 93950 |
| PACIFIC GROVE UNIFIED | 435 HILLCREST AVENUE | PACIFIC GROVE | CA | 93950 |
| PACIFIC GROVE UNIFIED SCHOOL DISTRICT | 555 SINEX AVENUE | PACIFIC GROVE | CA | 93950 |
| PACIFIC UNIFIED | 69325 HIGHWAY ONE | BIG SUR | CA | 93920 |
| PACIFIC UNIFIED SCHOOL DISTRICT | 69325 HIGHWAY 1 | BIG SUR | CA | 93920 |
| PACIFIC VALLEY (K-12) | 69325 HWY ONE | BIG SUR | CA | 93920 |
| PAJARO MIDDLE | 250 SALINAS RD | WATSONVILLE | CA | 95076 |
| PAJARO VALLEY HIGH | 500 HARKINS SLOUGH RD | WATSONVILLE | CA | 95076 |
| PAJARO VALLEY UNIFIED | 294 GREEN VALLEY ROAD | WATSONVILLE | CA | 95076 |
| PALMA HIGH SCHOOL | 919 IVERSON ST. | SALINAS | CA | 93901 |
| PARKFIELD ELEMENTARY | 70585 PARKFIELD COALINGA RD | SAN MIGUEL | CA | 93451 |
| PINNACLES HIGH | 690 MAIN ST | SOLEDAD | CA | 93960 |
| PLANNED PARENTHOOD MAR MONTE, INC. | 398 S GREEN VALLEY RD | WATSONVILLE | CA | 92126 |
| PLANNED PARENTHOOD MAR MONTE, INC. | 625 HILBY AVE | SEASIDE | CA | 92126 |
| PLANNED PARENTHOOD MAR MONTE, INC. | 316 N MAIN ST | SALINAS | CA | 92126 |
| PLANNED PARENTHOOD MAR MONTE, INC. | 1119 PACIFIC AVE | SANTA CRUZ | CA | 92126 |
| PLANNED PARENTHOOD MAR MONTE, INC. | 598 WALNUT AVE | GREENFIELD | CA | 92126 |
| PRISCILLA BOK LIBRARY | 200 EIGHTH STREET | MARINA | CA | 93933 |
| PRUNEDALE ELEMENTARY | 17719 PESANTE RD | SALINAS | CA | 93907 |
| RADCLIFF ELEMENTARY | 550 RODRIGUEZ ST | WATSONVILLE | CA | 95076 |
| RENAISSANCE HIGH CONTINUATION | 11 SPRING VALLEY RD | LA SELVA BEACH | CA | 95076 |
| RIO DEL MAR ELEMENTARY | 819 PINEHURST DR | APTOS | CA | 95003 |
| RIVER VIEW HIGH | 325 MARION AVENUE | BEN LOMOND | CA | 95005 |
| ROBERT DOWN ELEMENTARY | 485 PINE AVE | PACIFIC GROVE | CA | 93950 |
| ROBERT LOUIS STEVENSON | 3152 FOREST LAKE RD | PEBBLE BEACH | CA | 93953 |
| ROBERT LOUIS STEVENSON SCHOOL | 3152 FOREST LAKE ROAD | PEBBLE BEACH | CA | 93953 |
| ROGER S. FITCH MIDDLE | 999 COE AVE | SEASIDE | CA | 93955 |
| ROLLING HILLS MIDDLE | 130 HERMAN AVE | WATSONVILLE | CA | 95076 |
| ROOSEVELT ELEMENTARY | 120 CAPITOL ST | SALINAS | CA | 93901 |
| ROSE FERRERO ELEMENTARY | 400 ENTRADA DR | SOLEDAD | CA | 93960 |
| SALINAS ADULT | 20 SHERWOOD PLACE | SALINAS | CA | 93906 |
| SALINAS CITY ELEMENTARY | 840 SOUTH MAIN STREET | SALINAS | CA | 93901 |
| SALINAS CITY SCHOOL DISTRICT | 431 WEST ALISAL STREET | SALINAS | CA | 93901 |
| SALINAS COMMUNITY | 1420 NATIVIDAD RD | SALINAS | CA | 93906 |
| SALINAS HIGH | 726 SOUTH MAIN ST | SALINAS | CA | 93901 |
| SALINAS PUBLIC LIBRARY | 110 WEST SAN LUIS STREET | SALINAS | CA | 93901 |
| SALINAS UNION HIGH | 431 WEST ALISAL STREET | SALINAS | CA | 93901 |
| SALINAS UNION HIGH SCHOOL DISTRICT | 431 W. ALISAL STREET | SALINAS | CA | 93901 |
| SALINAS VALLEY MEMORIAL HEALTHCARE SYSTEM | 917 BLANCO CIR | SALINAS | CA | 92126 |
| SALINAS VALLEY MEMORIAL HEALTHCARE SYSTEM | 945 BLANCO CIR | SALINAS | CA | 92126 |
| SALINAS VALLEY MEMORIAL HEALTHCARE SYSTEM | 951 BLANCO CIR | SALINAS | CA | 92126 |

Resolution T-17429

CD/SIM

| | | | | |
|---|---------------------------|---------------|----|-------|
| SALINAS VALLEY MEMORIAL HEALTHCARE SYSTEM | 133 FOURTH ST | GONZALES | CA | 92126 |
| SALINAS VALLEY MEMORIAL HEALTHCARE SYSTEM | 8036 SAN MIGUEL CANYON RD | SALINAS | CA | 92126 |
| SALUD PARA LA GENTE | 45 NIELSON STREET | WATSONVILLE | CA | 95076 |
| SALVATION ARMY (1491 CONTRA COSTA, SEASIDE, CA) | 1491 CONTRA COSTA | MONTEREY | CA | 93942 |
| SALVATION ARMY (535 PALM AVE., SEASIDE, CA) | 535 PALM AVE. | SEASIDE | CA | 93955 |
| SALVATION ARMY (720 LAUREL ST., SANTA CRUZ, CA) | 720 LAUREL ST. | SANTA CRUZ | CA | 95061 |
| SALVATION ARMY (A BISHOP ST., WATSONVILLE, CA) | 29-A BISHOP ST. | WATSONVILLE | CA | 95076 |
| SALVATION ARMY (ELM ST., SEASIDE, CA) | 530 ELM STREET | SEASIDE | CA | 93955 |
| SALVATION ARMY (GRANT ST., WATSONVILLE, CA) | 112 GRANT ST. | WATSONVILLE | CA | 95077 |
| SALVATION ARMY (SCOTT ST., SAND CITY, CA) | 800 SCOTT ST. | MONTEREY | CA | 93942 |
| SALVATION ARMY (UNION ST., WATSONVILLE, CA) | 232 UNION ST. | WATSONVILLE | CA | 95076 |
| SAN ANTONIO ELEMENTARY | 67550 LOCKWOOD/JOLON RD | LOCKWOOD | CA | 93932 |
| SAN ANTONIO UNION ELEMENTARY | 67550 LOCKWOOD/JOLON ROAD | LOCKWOOD | CA | 93932 |
| SAN ARDO ELEMENTARY | 62428 CENTER ST | SAN ARDO | CA | 93450 |
| SAN ARDO UNION ELEMENTARY | 62428 CENTER STREET | SAN ARDO | CA | 93450 |
| SAN BENANCIO MIDDLE | 43 SAN BENANCIO RD | SALINAS | CA | 93908 |
| SAN LORENZO VALLEY ELEMENTARY | 7155 HWY 9 | FELTON | CA | 95018 |
| SAN LORENZO VALLEY HIGH | 7105 HWY 9 | FELTON | CA | 95018 |
| SAN LORENZO VALLEY HIGH SCHOOL | 6134 HIGHWAY 9 | FELTON | CA | 95018 |
| SAN LORENZO VALLEY MIDDLE | 7179 HACIENDA WAY | FELTON | CA | 95018 |
| SAN LORENZO VALLEY UNIFIED | 325 MARION AVENUE | BEN LOMOND | CA | 95005 |
| SAN LUCAS ELEMENTARY | 53675 SAN BENITO ST | SAN LUCAS | CA | 93954 |
| SAN LUCAS UNION ELEMENTARY | 53675 SAN BENITO STREET | SAN LUCAS | CA | 93954 |
| SAN VICENTE ELEMENTARY | 1300 METZ RD | SOLEDAD | CA | 93960 |
| SANTA CATALINA SCHOOL | 1500 MARK THOMAS DRIVE | MONTEREY | CA | 93940 |
| SANTA CRUZ ADULT | 319 LA FONDA AVENUE | SANTA CRUZ | CA | 95062 |
| SANTA CRUZ CITY ELEMENTARY | 405 OLD SAN JOSE ROAD | SOQUEL | CA | 95073 |
| SANTA CRUZ CITY ELEMENTARY ALTERNATIVE EDUCATION | 840 NORTH BRANCIFORTE AVE | SANTA CRUZ | CA | 95062 |
| SANTA CRUZ CITY HIGH | 405 OLD SAN JOSE ROAD | SOQUEL | CA | 95073 |
| SANTA CRUZ CITY SCHOOLS | 2931 MISSION STREET | SANTA CRUZ | CA | 95060 |
| SANTA CRUZ CO. CYA DISTRICT BEN LOMOND YCC | 13575 EMPIRE GRADE RD. | SANTA CRUZ | CA | 95060 |
| SANTA CRUZ COMMUNITY COUNSELING CENTER | 1025 CENTER | SANTA CRUZ | CA | 95060 |
| SANTA CRUZ COMMUNITY COUNSELING CENTER | 290 PIONEER | SANTA CRUZ | CA | 95060 |
| SANTA CRUZ COMMUNITY COUNSELING CENTER/ADMINISTRATIVE SERVICES | 195 HARVEY WEST BLVD. | SANTA CRUZ | CA | 95060 |
| SANTA CRUZ COMMUNITY COUNSELING CENTER/CHILD AND FAMILY DEVELOPMENT PROGRAMS | 408 EAST LAKE AVENUE | WATSONVILLE | CA | 95076 |
| SANTA CRUZ COMMUNITY COUNSELING CENTER/COMMUNITY RECOVERY SERVICES-ALTO FRONT | 740 FRONT STREET | SANTA CRUZ | CA | 95060 |
| SANTA CRUZ COMMUNITY COUNSELING CENTER/COMMUNITY SUPPORT SERVICES-PIONEER HOUSE | 290 PIONEER STREET | SANTZ CRUZ | CA | 95060 |
| SANTA CRUZ COMMUNITY COUNSELING CENTER/YOUTH SERVICES NORTH | 709 MISSION STREET | SANTA CRUZ | CA | 95060 |
| SANTA CRUZ COUNTY COMMUNITY | 400 ENCINAL ST | SANTA CRUZ | CA | 95060 |
| SANTA CRUZ COUNTY COURT | 400 ENCINAL ST | SANTA CRUZ | CA | 95060 |
| SANTA CRUZ COUNTY LAW LIBRARY | 701 OCEAN ST. RM 070 | SANTA CRUZ | CA | 95060 |
| SANTA CRUZ COUNTY OFFICE OF EDUCATION | 400 ENCINAL STREET | SANTA CRUZ | CA | 95060 |
| SANTA CRUZ COUNTY OFFICE OF EDUCATION | 809-H BAY AVENUE | CAPITOLA | CA | 95010 |
| SANTA CRUZ COUNTY SPECIAL EDUCATION | 400 ENCINAL ST | SANTA CRUZ | CA | 95060 |
| SANTA CRUZ GARDENS ELEMENTARY | 8005 WINKLE AVE | SANTA CRUZ | CA | 95065 |
| SANTA CRUZ HIGH | 415 WALNUT AVE | SANTA CRUZ | CA | 95060 |
| SANTA CRUZ MONTESSORI SCHOOL | 6230 SOQUEL DRIVE | APTOS | CA | 95003 |
| SANTA CRUZ PUBLIC LIBRARIES | 117 UNION ST | SANTA CRUZ | CA | 95060 |
| SANTA CRUZ WOMEN'S HEALTH CENTER | 250 LOCUST ST | SANTA CRUZ | CA | 95060 |
| SANTA CRUZ WOMEN'S HEALTH CENTER | 901 CENTER ST | SANTA CRUZ | CA | 95060 |
| SANTA CRUZ WOMEN'S HEALTH CENTER | 911 CENTER ST | SANTA CRUZ | CA | 95060 |
| SANTA CRUZ WOMEN'S HEALTH CENTER | 250 LOCUST ST | SANTA CRUZ | CA | 95060 |
| SANTA LUCIA ELEMENTARY | 502 COLLINS ST | KING CITY | CA | 93930 |
| SANTA RITA ELEMENTARY | 2014 SOUTH SANTA RITA ST | SALINAS | CA | 93906 |
| SANTA RITA UNION ELEMENTARY | 57 RUSSELL ROAD | SALINAS | CA | 93906 |
| SCOTTS VALLEY HIGH | 555 GLENWOOD DR | SCOTTS VALLEY | CA | 95066 |

Resolution T-17429

CD/SIM

| | | | | |
|---|---------------------------------------|---------------|----|-------|
| SCOTTS VALLEY MIDDLE | 8 BEAN CREEK RD | SCOTTS VALLEY | CA | 95066 |
| SCOTTS VALLEY UNIFIED | 4444 SCOTTS VALLEY DRIVE, SUITE 5B | SCOTTS VALLEY | CA | 95066 |
| SEASIDE HIGH | 2200 NOCHE BUENA ST | SEASIDE | CA | 93955 |
| SHERWOOD ELEMENTARY | 110 SOUTH WOOD ST | SALINAS | CA | 93905 |
| SHORELINE MIDDLE | 855 17TH AVE | SANTA CRUZ | CA | 95062 |
| SOLEDAD ADULT | 690 MAIN STREET | SOLEDAD | CA | 93960 |
| SOLEDAD HIGH | 425 GABILAN DR | SOLEDAD | CA | 93960 |
| SOLEDAD UNIFIED | 1261 METZ ROAD | SOLEDAD | CA | 93960 |
| SOMAVIA HIGH SCHOOL | 650 ELKO ST | GONZALES | CA | 93926 |
| SOQUEL ELEMENTARY | 2700 PORTER ST | SOQUEL | CA | 95073 |
| SOQUEL ELEMENTARY SCHOOL DISTRICT | 620 MONTEREY AVENUE | CAPITOLA | CA | 95010 |
| SOQUEL HIGH | 401 OLD SAN JOSE RD | SOQUEL | CA | 95073 |
| SOQUEL UNION ELEMENTARY | 620 MONTEREY AVENUE | CAPITOLA | CA | 95010 |
| SPRECKELS ELEMENTARY | FOURTH ST AND HATTON AVE | SPRECKELS | CA | 93962 |
| SPRECKELS UNION ELEMENTARY | 130 RAILROAD AVENUE | SPRECKELS | CA | 93962 |
| STARLIGHT ELEMENTARY | 225 HAMMER DR | WATSONVILLE | CA | 95076 |
| SUN STREET CENTERS | 11 PEACH DR | SALINAS | CA | 93901 |
| SUREPATH FINANCIAL SOLUTIONS | 23 E BEACH ST A | WATSONVILLE | CA | 92126 |
| T. S. MACQUIDDY ELEMENTARY | 330 MARTINELLI ST | WATSONVILLE | CA | 95076 |
| THE BAY SCHOOL | 5400 SOQUEL AVE., SUITE F | SANTA CRUZ | CA | 95062 |
| TORO PARK ELEMENTARY | 22500 PORTOLA DR | SALINAS | CA | 93908 |
| TRINITY YOUTH SERVICES (VICTORVILLE, CA) | 15500 W. SAND STREET | COLTON | CA | 92324 |
| TULARCITOS ELEMENTARY | 35 FORD RD | CARMEL VALLEY | CA | 93924 |
| UNITED WAY MONTEREY COUNTY | 2511 GARDEN ROAD, C-100 | MONTEREY | CA | 93940 |
| UNITED WAY MONTEREY COUNTY | 376 SOUTH MAIN ST. | MONTEREY | CA | 93940 |
| UNIVERSITY PARK ELEMENTARY | 833 WEST ACACIA ST | SALINAS | CA | 93901 |
| VALENCIA ELEMENTARY | 250 APTOS SCHOOL RD | APTOS | CA | 95003 |
| VENTANA HIGH (CONTINUATION) | 2015 EL CAMINO REAL | GREENFIELD | CA | 93927 |
| VINE HILL ELEMENTARY | 151 VINE HILL SCHOOL RD | SCOTTS VALLEY | CA | 95066 |
| VIRGINIA ROCCA BARTON ELEMENTARY | 680 LAS CASITAS DR | SALINAS | CA | 93905 |
| VISTA VERDE MIDDLE | 1199 ELM AVE | GREENFIELD | CA | 93927 |
| VOLUNTEER CENTERS OF SANTA CRUZ COUNTY | 1740 17TH AVE | SANTA CRUZ | CA | 95062 |
| WALNUT AVE. WOMEN'S CTR. | 303 WALNUT AVE | SANTA CRUZ | CA | 95060 |
| WALNUT AVENUE WOMEN'S CENTER | 303 WALNUT AVENUE | SANTA CRUZ | CA | 95060 |
| WALTER COLTON | 100 TODA VISTA DR | MONTEREY | CA | 93940 |
| WASHINGTON ELEMENTARY | 340 CORRAL DE TIERRA RD | SALINAS | CA | 93908 |
| WASHINGTON MIDDLE | 560 IVERSON ST | SALINAS | CA | 93901 |
| WASHINGTON UNION ELEMENTARY | 43 SAN BENANCIO ROAD | SALINAS | CA | 93908 |
| WATSONVILLE HIGH | 250 EAST BEACH ST | WATSONVILLE | CA | 95076 |
| WATSONVILLE PUBLIC LIBRARY | 310 UNION ST. | WATSONVILLE | CA | 95076 |
| WATSONVILLE/APTOS ADULT EDUCATION | 294 GREEN VALLEY ROAD | WATSONVILLE | CA | 95076 |
| WELLINGTON M. SMITH, JR. | 1420 NATIVIDAD RD | SALINAS | CA | 93906 |
| WESTLAKE ELEMENTARY | 1000 HIGH ST | SANTA CRUZ | CA | 95060 |
| WOMAN'S CRISIS SUPPORT - DEFENSA DE MUJERES | 220 E LAKE AVE | WATSONVILLE | CA | 95076 |
| WOMAN'S CRISIS SUPPORT - DEFENSA DE MUJERES | 1570 SOQUEL AVE | SANTA CRUZ | CA | 95065 |
| WOMEN'S CRISIS CENTER | P.O. BOX 1805 | SALINAS | CA | 93902 |
| WOMEN'S CRISIS SUPPORT-DEFENSA DE MUJERES | 220 E. LAKE AVENUE | WATSONVILLE | CA | 95076 |
| Y.M.C.A OF SILICON VALLEY – METRO | 16275 HIGHWAY 9 | BOULDER CREEK | CA | 95006 |
| YORK SCHOOL | 9501 YORK RD. | MONTEREY | CA | 93940 |
| YWCA OF WATSONVILLE (340 EAST BEACH ST.) | 340 EAST BEACH STREET | WATSONVILLE | CA | 95076 |

Resolution T-17429

CD/SIM

Table 3 | Public Safety Answering Points (PSAPs)

| DESCRIPTION | ADDRESS | CITY | STATE | ZIP |
|--|-------------------|-------------|-------|-------|
| Santa Cruz Regional 911 Center - SCCECC | 495 Brookwood Dr | SANTA CRUZ | CA | 95065 |
| Santa Cruz County Office of Emergency Services | 501 Brookwood Dr | SANTA CRUZ | CA | 95065 |
| Santa Cruz County Government Center | 701 Ocean St | SANTA CRUZ | CA | 95065 |
| Watsonville Courthouse/Civic Center | 1 Second St | WATSONVILLE | CA | 95076 |
| Santa Cruz County Health Services Agency | 1080 Emeline Ave | SANTA CRUZ | CA | 95065 |
| Santa Cruz County Health Services Agency | 1430 Freedom Blvd | WATSONVILLE | CA | 95076 |
| Monterey County Regional 911 Center - MCECC | 1322 Natividad Rd | SALINAS | CA | 93906 |
| Monterey County Office of Emergency Services | 1322 Natividad Rd | SALINAS | CA | 93906 |

END OF APPENDIX D