

**Frontier CASF Broadband Infrastructure Grant Application – Northeast Project: Phase I  
Item #1 - Project Summary**

**Applicant:** Citizens Telecommunications Company of California Inc. d/b/a Frontier Communications of California (U-1024-C)

**Contact:** Amy Warshauer  
Manager, Government & External Affairs  
[Amy.warshauer@ftr.com](mailto:Amy.warshauer@ftr.com)

**Project Title:** Northeast Project: Phase I

**Location:** Lassen & Modoc Counties

**Type:** Middle & Last Mile

**Grant Request:** \$11,849,212.87

**PROJECT SUMMARY**

Citizens Telecommunications Company of California Inc. d/b/a Frontier Communications of California (U-1024-C) (“Frontier”) is applying for a \$11,849,212.87 grant from the California Advanced Services Fund (CASF) Broadband Infrastructure Grant Account to deploy last mile VDSL2 facilities that will enable High Speed Internet (HSI), VoIP and over-the-top (OTT) video services (such as Netflix, Hulu, etc.) to 235 unserved CASF-eligible households in the region of Alturas, Ravendale and Standish within Lassen and Modoc Counties. Frontier also seeks to leverage the federal Connect America Fund II (CAF II) dollars to build out to 187 CAF II households within the region; this results in an upgrade of a total of 422 households. Frontier refers to the collective areas of this proposal as the “Northeast Project: Phase I” which will be explained in more detail below.

Frontier’s proposed project covers approximately 285.3 square miles and upgrades existing facilities that are capable of providing HSI, OTT and VoIP services. This project includes deployment of high capacity middle-mile fiber optic cable along Highway 395 where no other middle-mile infrastructure currently exists. This upgrade will allow service to last-mile customers with minimum speeds of 10 Mbps downstream and 1 Mbps Upstream and maximum speeds of 115 Mbps downstream and 7 Mbps upstream using VDSL2 technology.

This project would also offer these services to community anchor institutions at minimum speeds of 10 Mbps downstream and 1 Mbps Upstream and maximum speeds of 115 Mbps downstream and 7 Mbps upstream. In addition, 869 non-CASF Frontier households will benefit from the equipment upgrade; speeds for these households will also be capable of maximum speeds of 115 Mbps upload and 7 Mbps download and minimum speeds of 10 Mbps upload and 1 Mbps download. Importantly as well is that services will be available through Frontier’s low-income broadband programs described later.

**FUNDING RATIONALE**

AB 1665 resulted in the rules that disallow CAF II funding in areas that are eligible for CASF grants in order to prevent “double dipping” in public funds. Further, the legislation stated that in CASF regions that contain CAF II households, providers are encouraged to leverage both state and federal funds in order to avoid a “checkerboard” effect where some houses are served while others remain unserved. In

the spirit of AB 1665, Frontier is proposing to leverage state funds for 235 households that are CASF eligible and federal funds for 187 households that are CAF II eligible.

Under the new CASF rules adopted in D.18-12-018 (issued December 20, 2018) (Decision), Frontier believes that the proposed project qualifies for 100% funding – \$12,322,700.61 – which represents the full projected costs to provide service to 422 unserved households.

The total cost of building to 422 households amounts to \$12,322,700.61. Frontier plans to leverage federal funding from CAF II toward the 187 households at the CAF II cost of \$2,532.02 per household; a total investment of \$473,487.74. The state funded amount is therefore calculated by removing the \$473,487.74 CAF II household amount from the total projected project budget of \$12,322,700.61, resulting in a finalized CASF request of \$11,849,212.87.

The Decision provides a table which summarizes criteria for funding level determinations. According to this table, only projects in low-income areas or without any service from an existing facilities-based provider (a “dial-up only” area) are eligible to receive up to 100% funding. The proposed Northeast Phase I CASF project qualifies for 100% funding as it meets the following criteria:

Criteria	Reimbursement
Baseline for Eligible Project	60%
Presence of dial-up only (all households)	40%
<b>TOTAL</b>	<b>100%</b>

The proposed build resides within an area that is currently not served by any form of wireline or wireless facilities-based broadband and proposes a cost-effective expansion of broadband access to 235 unserved CASF-eligible households, 187 CAF II households, and by DSLAM proximity, upgrades service to an additional 869 non-CASF/CAF Frontier households. This project provides a fully redundant/diverse ring for the Northeast region and provides necessary backhaul that supports GeoLinks wireless broadband deployment. CASF funding for Phase I will also ensure essential middle-mile backhaul for last-mile deployment to 422 unserved households and enable future deployment to additional households that are eligible for CAF II, further leveraging federal funds to help close the Digital Divide in California.

- **Existence of communication facilities that may be upgraded to deploy broadband:** The Commission interprets this category mean that the proposed project relies primarily on existing infrastructure. This project plans to leverage Frontier’s existing infrastructure, and thus will be less expensive to build.
- **Location and accessibility of the area:** The Commission interprets this category to mean that the Legislature directed the Commission to award higher funding levels in remote areas, as specified. The Decision directs Staff to award more funding if an applicant proves a proposed project area meets two of the five characteristics outlined below; this project meets four of the five, as shown below in bold:
  - ✓ **The proposed project area contains rugged or difficult terrain (e.g., mountains, desert, national or state forest);**

- ✓ **The proposed project area is an unincorporated community;**
  - ✓ **The proposed project area is more than 10 miles from the nearest hospital;**
  - The proposed project area is more than 10 miles from the nearest state or federal highway; and/or (not applicable);
  - ✓ **The proposed project area is located in a rural census block, as defined by the U.S. Census Bureau.**
- **Significant contribution to achieving the program goal:** The proposed project would make a significant contribution to the CASF program as the area within the Northeastern California Connect Consortium, a region which is served at 90.4% and falls below the 98% goal set forth in AB 1665.
  - **Low-Income Community:** The proposed project area qualifies as a low-income community with a median household income of \$50,132 which falls below the \$50,200 threshold set forth in the Decision.

**Low-Income Plan:** Frontier features a choice of two low-income programs for customers: Frontier Fundamentals and Frontier Affordable Broadband.

#### **ADDITIONAL BENEFITS**

This project will support the goal of achieving 98% broadband service availability in the Northeastern California Connect Consortium. Based on latest CPUC broadband availability data (as of March, 2019), this consortium is served at 90.4%, being Modoc and Lassen Counties served at 64.9% and 84.9%, respectively. Frontier is the primary service provider in the Northeast region, rendering this project absolutely vital in the larger goal of providing service to those on the wrong side of the Digital Divide. Frontier has designated this project as “Phase I,” as it lays the necessary groundwork that will enable additional project build opportunities and will allow Frontier more options as we continue to assess opportunities to connect some of the most remote areas of the Northeast.

Local governments, the California Emerging Technology Fund and elected officials support this project as expanding and upgrading internet service in Modoc and Lassen Counties will benefit residents and community anchor institutions in areas such as education, healthcare, economic and workforce development, and resiliency, among others. This enhanced internet access will also allow these counties to better reach and provide services and information to rural residents and businesses, and access tools and resources that can help to optimize internal processes to achieve cost efficiencies. Additionally, enhanced internet service capabilities are critical for public safety communications allowing first responders to send and receive critical voice, video and data during emergencies and disasters.

Lassen County Office of Education supports this project based on the understanding that high-speed internet access is integral in connecting teachers to students, parents and educational resources. Rural school teachers and administrators acknowledge connectivity limitations as a primary obstacle to effectively using technology in the classroom. Additionally, students lacking internet connectivity at home are at a disadvantage when completing assignments that require online access and interaction. As more bandwidth intensive material moves online—such as educational videos, interactive learning tools, and video conferencing tools for teachers—connection speed is quickly becoming a major issue for rural

educators. This project will be important to reduce these barriers through expanded internet access in Lassen County.

The Alturas and Lassen Chamber of Commerce supports this Frontier Project as broadband availability is positively related to employment growth, especially in areas with lower population density consistent with the theory that rural remote areas may benefit more from high-speed internet by giving businesses access to regional markets. Additionally, businesses need broadband to access online training and classes to improve their employees' skills. Rural businesses do not have the budgets to send employees to professional development or are too small to send an employee away from operations. Bringing professional development in-house by enabling high-speed internet access reduces those challenges. Additionally, improved broadband access, speed and capacity allows businesses to expand their markets, diversify their funding streams and increase their workforce.

Farmers and ranchers will also benefit from high speed internet service as it provides innovative technological tools use to maintain greater control over crop and livestock production, processing, distribution, and storage resulting in greater efficiencies, lower prices, safer growing conditions, safer foods and reduced environmental and ecological impact.

Rural healthcare facilities and rural residents seeking healthcare services will greatly benefit from this project, as the healthcare sector is emerging as a heavy user of internet services. The evidence is strong for technologies that lower costs, connect remote populations, and expand the reach of urban-centered medical expertise. Furthermore, telehealth can connect physicians with physicians and patients with physicians and also provide access to specialists for treatment of multiple conditions.

Additionally, this project is supported by both Congressman LaMalfa and Assemblyman Dahle's offices.

The support of these organizations is highly important to ensure internet service adoption as demand aggregation from residential, business and local government customers will ensure viability of broadband service expansion in Modoc and Lassen Counties.

The application of Frontier for the Northeast Project: Phase I is a modest funding request for a region of the state that is severely unserved and underserved, and therefore is a prudent use of funds to help close the Digital Divide.

**Census Blocks Covered**

60350401003105	60350401003407	60350401003490
60350401003106	60350401003449	60350401003532
60350401003208	60350401003455	60350401003535
60350401003221	60350401003461	60350401003537
60350401003222	60350401003462	60350401003538
60350401003228	60350401003463	60350401003554
60350401003231	60350401003465	60350401003561
60350401003259	60350401003471	60350401003564
60350401003261	60350401003472	60350401003565
60350401003264	60350401003486	60350401003568
60350401003397	60350401003489	60350401003590

60350401003591	60350406001430	60490003003147
60350401003594	60350406001439	60490003003148
60350401003596	60490003001738	60490003003157
60350401003597	60490003002199	60490003003161
60350401003598	60490003002219	60490003003167
60350401003600	60490003002351	60490003003169
60350401003607	60490003002363	60490003003170
60350401003642	60490003002364	60490003003172
60350401003661	60490003002367	60490003003173
60350401003669	60490003002370	60490003003180
60350401003698	60490003002372	60490003003189
60350401003700	60490003002373	60490003003278
60350401003702	60490003002386	60490003003279
60350401003768	60490003002391	60490003003284
60350401003817	60490003002396	60490003003287
60350401003828	60490003002397	60490003003291
60350401003829	60490003002529	60490003003292
60350401003830	60490003002584	60490003003293
60350401003831	60490003002649	60490003003317
60350401003841	60490003003018	60490003003319
60350404001008	60490003003059	60490003003341
60350404001033	60490003003077	60490003003666
60350404001045	60490003003080	60490003003674
60350404001048	60490003003118	60490003003676
60350404001055	60490003003122	60490003003824
60350404001062	60490003003124	60490003003825
60350404001066	60490003003125	60490003003828
60350404001086	60490003003126	60490003003829
60350404001104	60490003003127	60490003003833
60350404001122	60490003003128	60490003003873
60350404001126	60490003003133	60490003003898
60350405001001	60490003003134	60490003003924
60350406001000	60490003003135	60490003003940
60350406001021	60490003003137	60490003003955
60350406001102	60490003003138	60490003003956
60350406001429	60490003003139	60490003003981

**ZIP Codes Covered**

96114  
96123  
96117

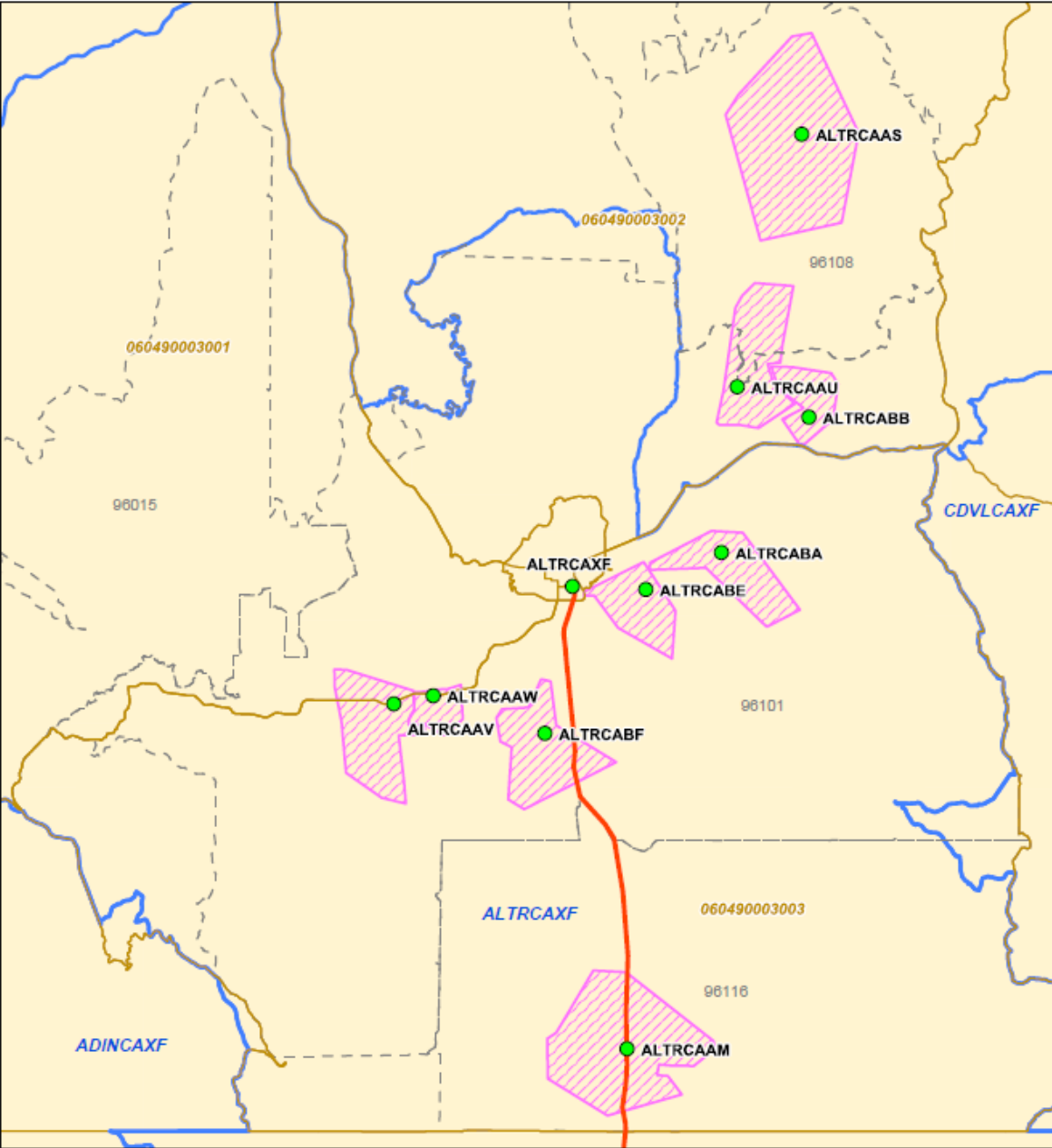
96101

96015

96108

96113

**ALTURAS CASF**

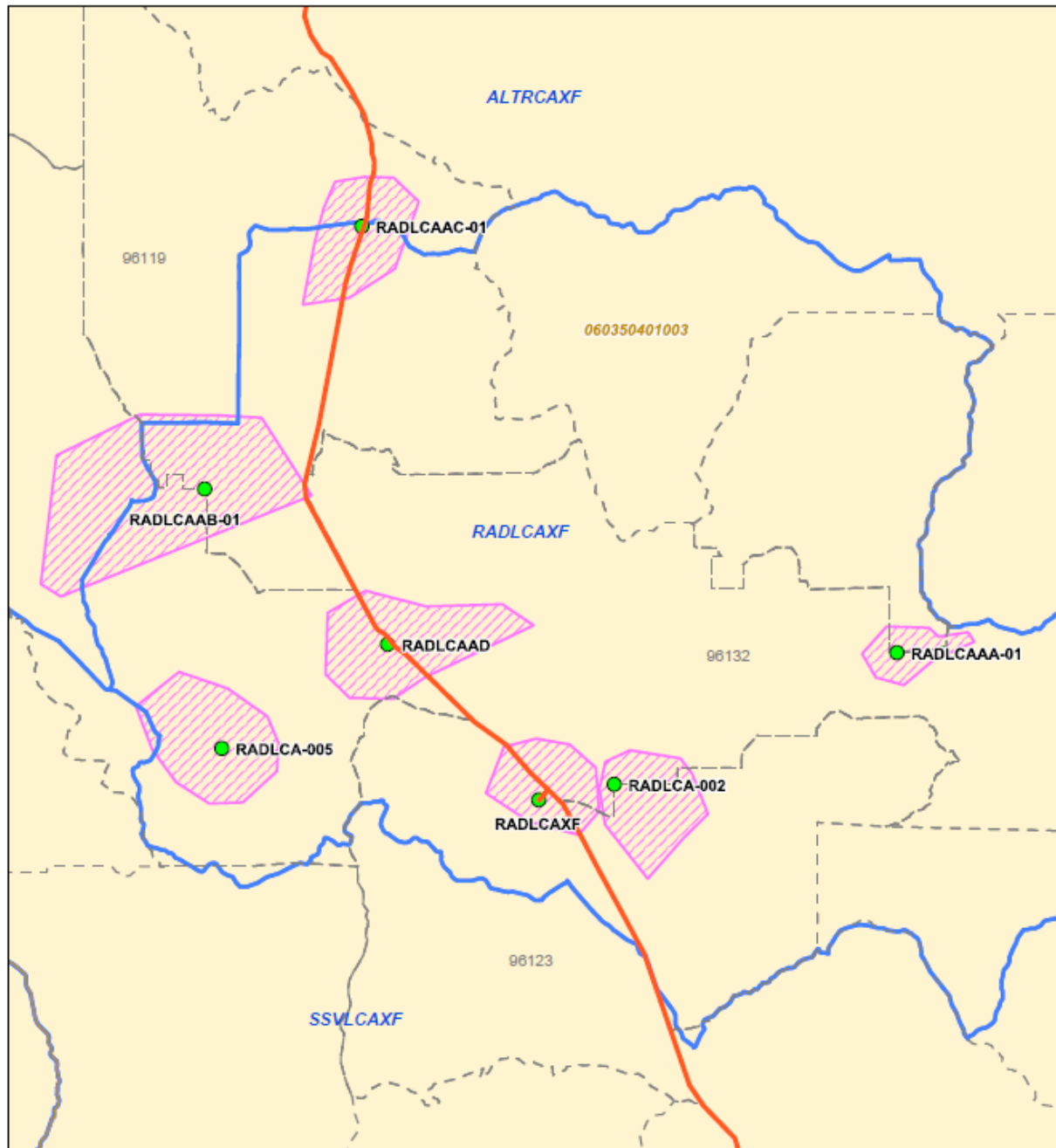


04/05/2019

**Legend**

- Remote
- Serving Area
- Frontier Wirecenter Boundary
- Fiber
- Census Block Groups
- Zip Code Boundary

# RAVENDALE CASF



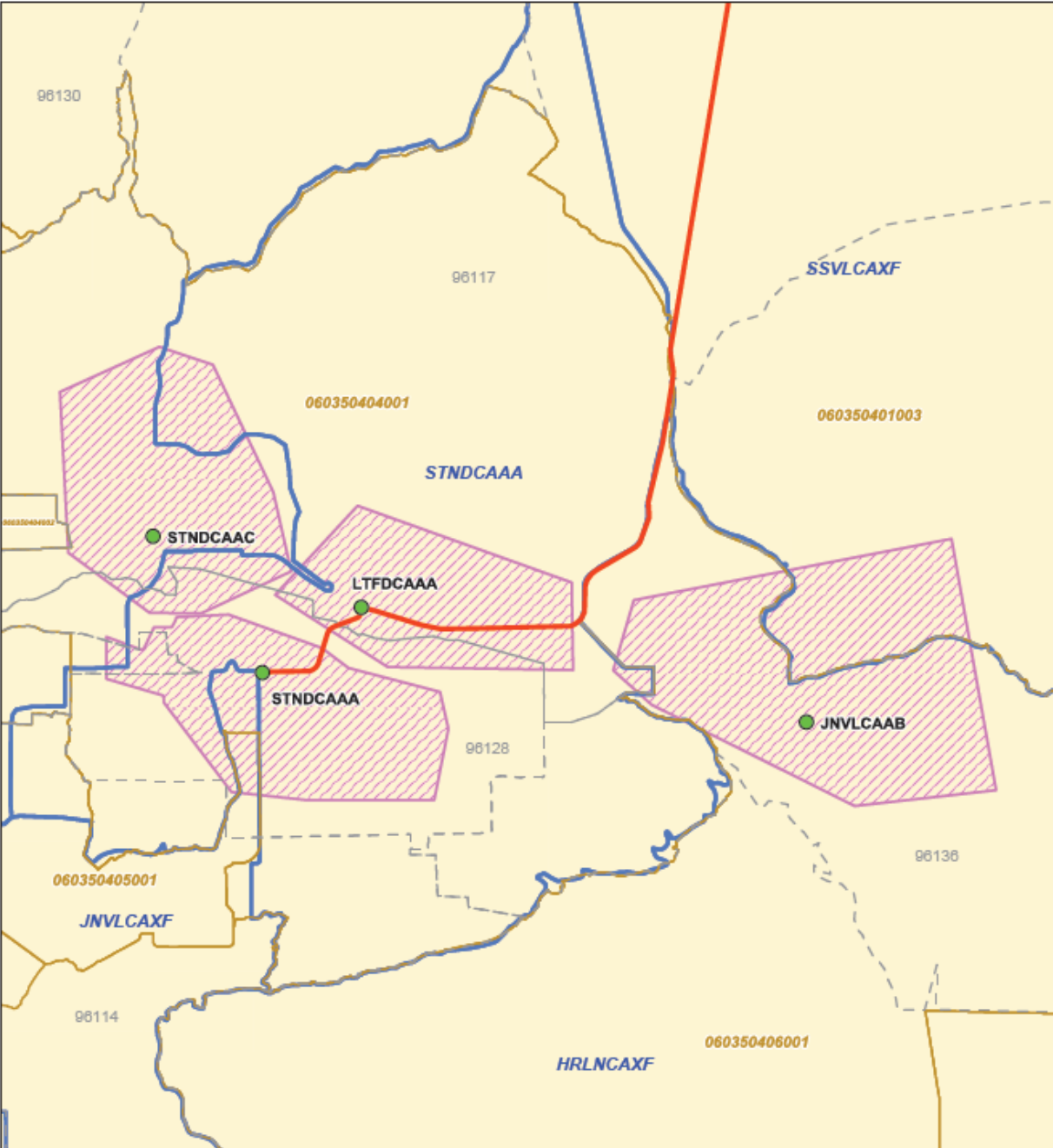
04/05/2019

## Legend

- Remote
- ▨ Serving Area
- ▭ Frontier Wirecenter Boundary
- Fiber
- ▭ Census Block Groups
- - - Zip Code Boundary



**STANDISH CASF**



04/05/2019

**Legend**

- Remote
- Serving Area
- Frontier Wirecenter Boundary
- Fiber
- Census Block Groups
- Zip Code Boundary