

**Anza Electric Cooperative Project Summary for Connect Anza phase 2 CASF  
Grant funding**

**Applicant name:** Anza Electric Cooperative Inc.

**Contact person:** Mr. Kevin Short, General Manager. 951-763-4333  
kevins@anzaelectric.org

**Project Title:** Connect Anza Phase 2

**Proposed Project Area Location:** Communities of Pinyon Pines, Garner Valley, and Mountain Center, located in the unincorporated area of Riverside County, CA.

**Project Type:** Last mile fiber to the home

**Total Funding:** \$3,689,033

**CASF Funding Requested:** \$2,213,420 (Grant funding)

**Self-Funding Match:** \$1,475,613

**No CASF Loan Request**

**Project Description:** Connect Anza will deploy a fiber optic cable on existing poles and rights of way and establish a network of sufficient capacity to establish high speed, quality internet service for Anza Electric Cooperatives (AEC's) existing service territory covering over 500 square miles, located wholly within western Riverside County. The area encompasses the communities of Mountain Center, Pinyon Pines, and Garner Valley which totals approximately 200 square miles of our service territory. All areas are within the boundaries of the CASF Broadband Infrastructure Priority Area listed in resolution T-17443. These areas are home to nearly 1,200 residents and several businesses. Connect Anza will offer free internet access to the local fire stations and the non-profit camp Ronald McDonald for children with cancer. Connect Anza, as an integral part of AEC, will provide reliable, affordable broadband high speed, Fiber-To-The-Home (FTTH) internet service to its member-owners at the lowest possible cost.

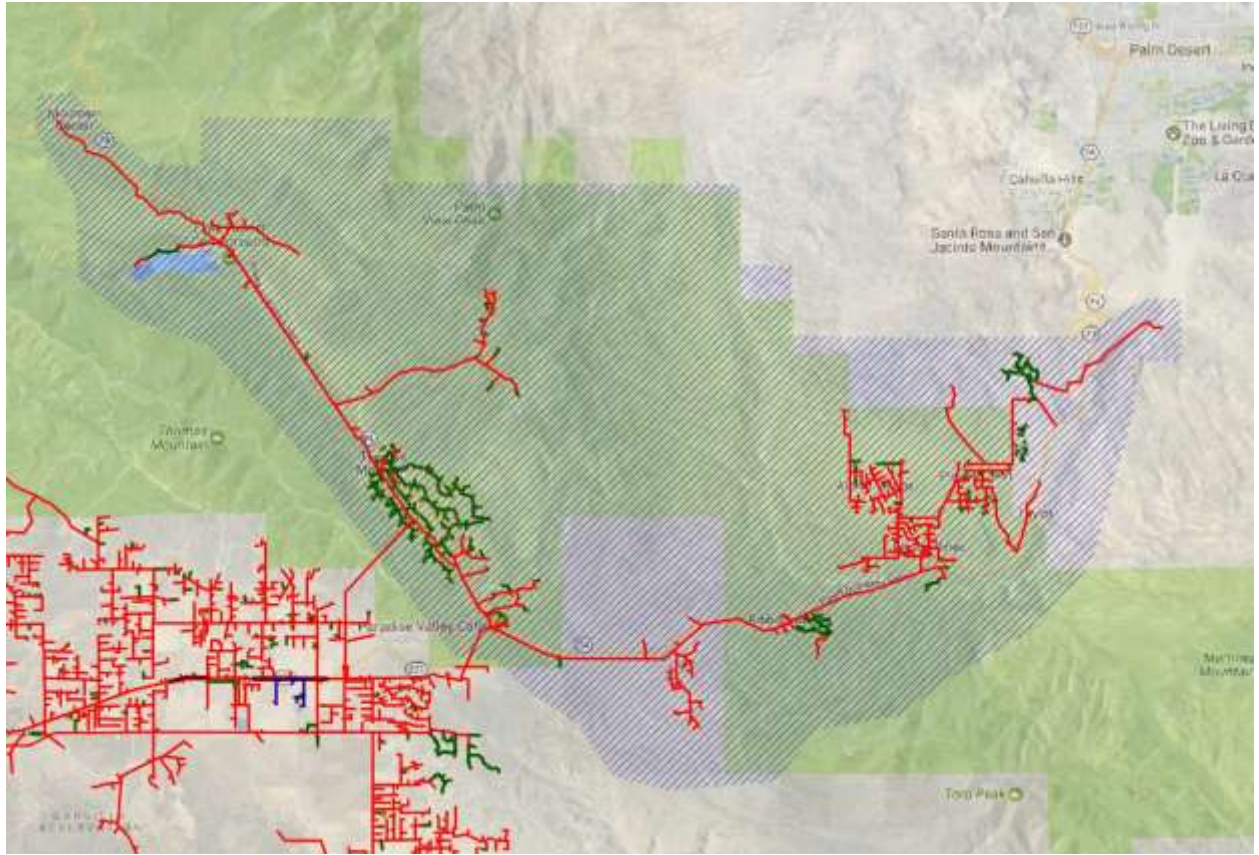
Anza Electric Cooperative Inc. Connect Anza Phase 2 project summary, last mile fiber to the home

Connect Anza will offer speeds of 50Mb/s both down and up to residents at a price point of \$49.00 per month with no cap or limits. AEC will also offer VoIP service including CASF e911 requirements at a monthly rate of \$20.

**Map of proposed project area:** See last page attached

**List of Census Block Groups and Zip Codes:**

<b>Census Block Group</b>	<b>Zip Code</b>
060650444022	92561
060650444024	92561



Anza Electric Cooperative Inc. Connect Anza Phase 2 project summary, last mile fiber to the home