



BEASORE/CENTRAL CAMP CASF PROJECT



Ryan Dulin
Director, Communications Division
California Public Utilities Commission

December 19, 2013



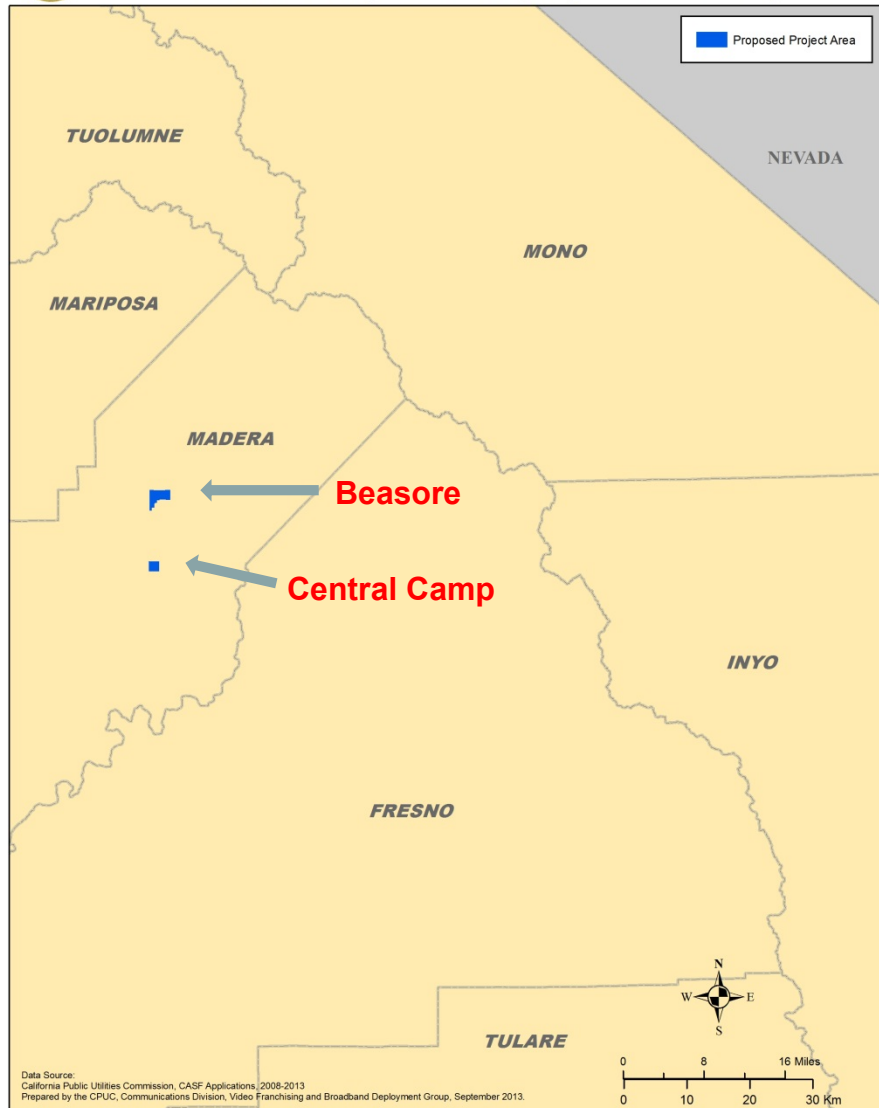
Beasore/Central Camp Project

- Proposed by Ponderosa Telephone Co.
- No landline phone service, poor cell reception
- Fiber-to-the-home with supporting backhaul
- Up to 50 mbps downstream / 20 mbps up
- Project seeks \$1,755,042 in CASF funds
(61.6 percent of \$2,847,306 total estimated cost of project)





CASF UNDERSERVED APPLICATION - FEBRUARY 1, 2013
Ponderosa Telephone Company - Beasore Project



Geography

- Eastern Madera County
- Sierra Nevada Foothills
- 3.49 square miles in aggregate
- Altitudes: Beasore, 6,800 feet; Central Camp 5,400 feet
- Weighted median income: \$44,757 per household
- Per 2010 Census:
 - Beasore 32 households, 84 housing units, 75 population
 - Central Camp 0 households, 75 housing units, 0 population
 - USFS, Ponderosa and County of Madera disagree, saying there are residents in Central Camp year round.





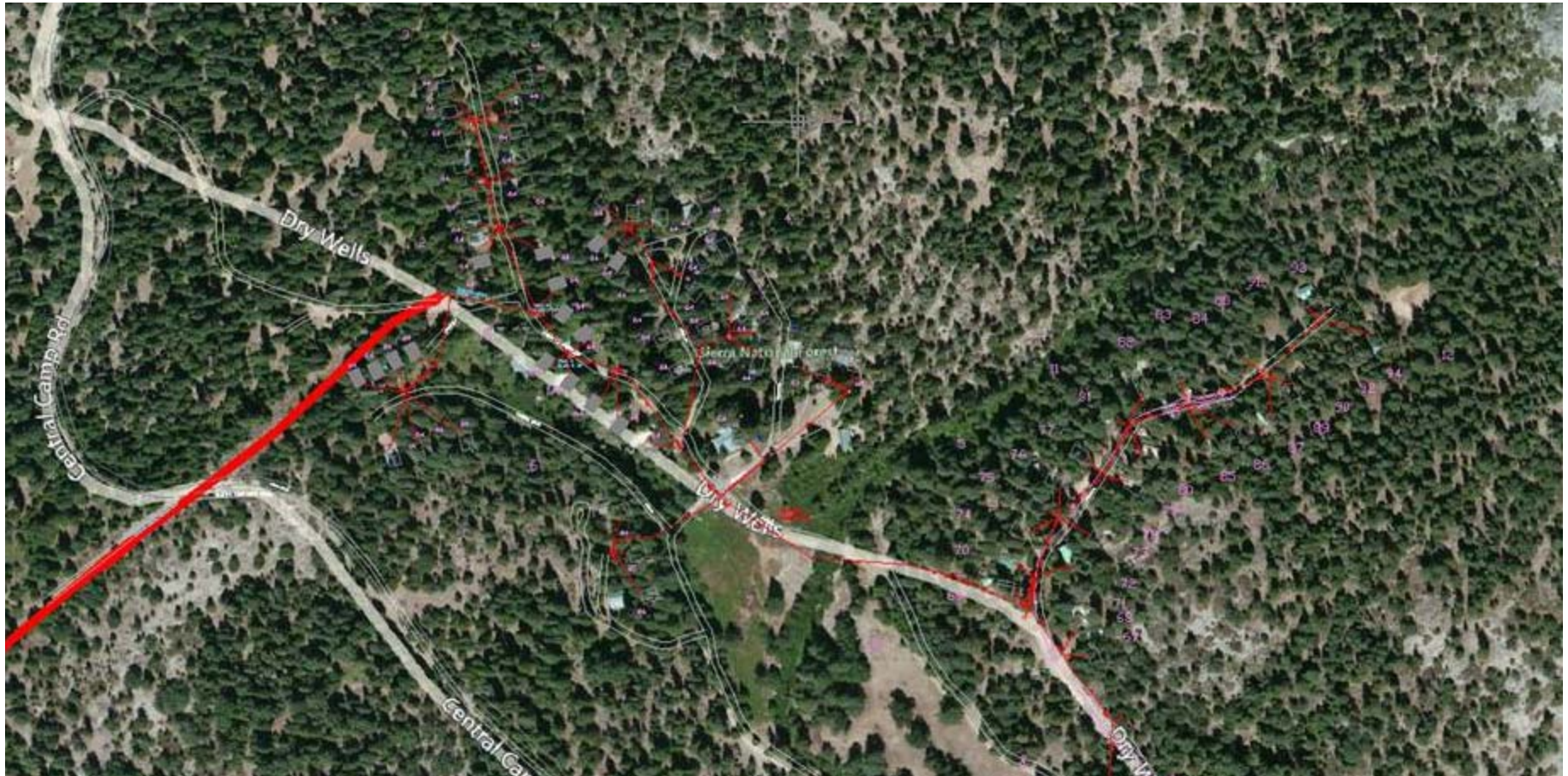
Responses to Commissioners' questions from Dec. 5 meeting

Follow up items	Research and Results		
1. Cost per housing unit, per area			
	Total Costs	CASF Match (61.6%)	Ponderosa Match (38.4%)
Beasore	\$2,335,166	\$1,439,366	\$895,800
Central Camp	\$421,040	\$259,523	\$161,517
Shared Costs (Design, Engineering, inspection, testing, etc.)	\$91,100	\$56,153	\$34,947
Total Project Costs	\$2,847,306	\$1,755,042	\$1,092,264
CASF Funds Requested	\$1,755,042		
Ponderosa Internally Funded	\$1,092,264		
	CPUC Cost Per Household	CPUC Cost Per Housing Unit	
Beasore	32 Households - \$45,858	84 Housing Units - \$17,488*	* Includes shared costs of \$353 per housing unit.
Central Camp	0 Households – Undefined	75 Housing Units - \$3,813*	
Total Project	32 Households - \$54,845	159 Housing Units - \$11,038*	
2. Confirmation that people live in the area; specifically in Central Camp	<p>Letter 1: USDA Forest Service Letter confirming that people live in Central Camp</p> <ul style="list-style-type: none"> · “Despite the findings of the 2010 US Census, Central Camp includes a permanent population” · “Central Camp includes many senior citizens living in the area” <p>Letter 2: Resident from Central Camp; past president of the Central Camp Home Owners Association</p> <ul style="list-style-type: none"> · “I have been an homeowner in Central Camp since 1986. There are approximately 70 homes in Central Camp. The majority of use is from May 1st to the end of Nov. Although some homes are used through the winter months. We have no cell phone service or internet access due to the terrain ” <p>➤ Information provided by CPUC Water Division: There are two Class D water utilities in the affected area; Beasore Meadows Water Company and Central Camp Water Company. Beasore serves 75 connections from June through October, while Central Camp serves 78 connections from May through October 15. Both systems shut down for winter.</p>		
3. Are there any school-age children living in the area?	Per the 2010 Census, six of the 32 household in the Beasore area have children under 18 years old. Despite inquiries to local authorities, CASF is unable to determine how many children are actually enrolled in area schools.		
4. Will the build out of the project benefit any surrounding communities that includes any schools?	Ponderosa has affirmed that wholesale access to the network will be provided in the project area. For example, if a wireless carrier chooses to put up a tower in the project area, backhaul access will be available. CASF staff has checked with the project team to see if there are future possibilities that the built-out of the project can benefit and extend to surrounding communities. Due to the isolated location of the project area, Ponderosa has stated that it will be difficult to further extend the current planned built out to surrounding areas that have schools. One of the surrounding communities in the area with schools is Oakhurst (an estimated 8 horizontal map miles; 19 road miles west of Central Camp). In Oakhurst, the schools show as having broadband at speeds greater than or equal to 6 mbps and less than 10 mbps upload and download. The community is also located outside of Ponderosa's exchange; in Sierra Telephone's service area.		





Central Camp (wide angle, with fiber routes)





Central Camp (fiber routes)





Central Camp (close up)



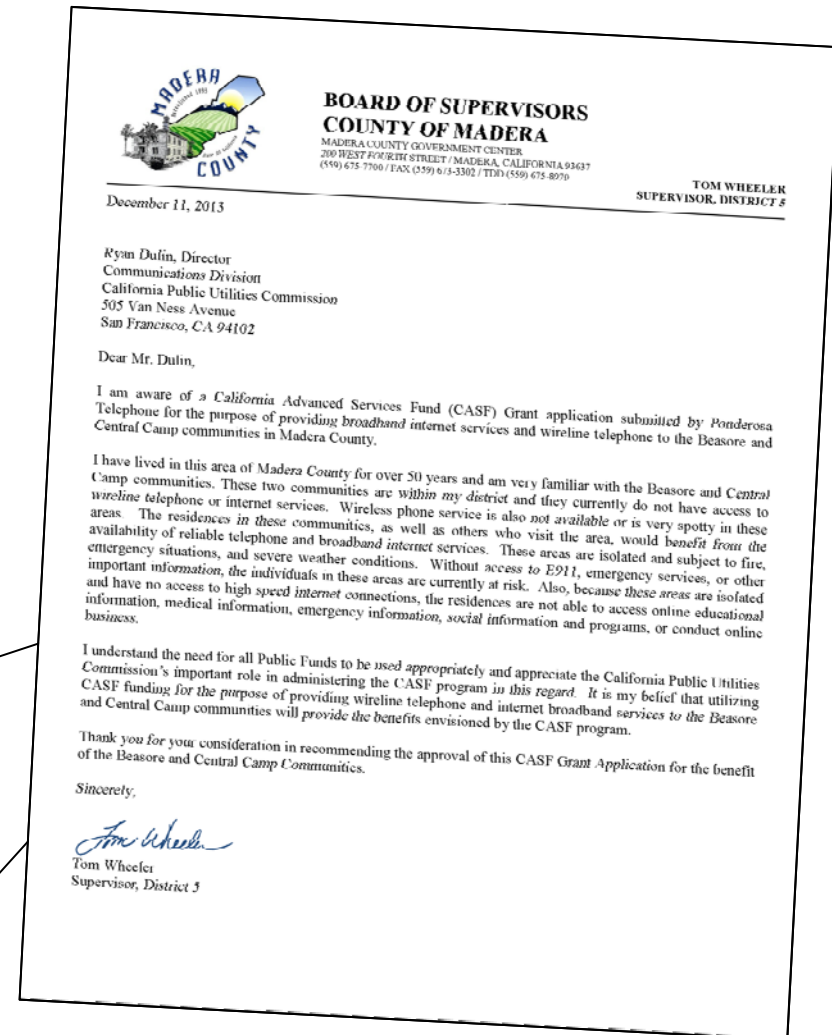


Five Letters of Local Support:

- United States Forest Service
- Supervisor Tom Wheeler (right)
- San Joaquin Valley Regional Broadband Consortium
- Richard Gonsalves
(Past President, Central Camp HOA)
- Scott Marsh
(Madera County Economic Development Commission)

“Without access to E911, emergency services, or other important information, the individuals in these areas are currently at risk.”

-- Supervisor Tom Wheeler





Thank you!

For Additional Information:

www.cpuc.ca.gov

