

1. Project Summary

Applicant: Surfnet Communications, Inc.
Contact person: Bob Fasulkey, CTO
Project title: Las Cumbres Fiber Project
Proposed Project Location: Santa Cruz County
Project Type: Last Mile
CASF Funding Requested: Amount of Grant \$729,932 / Amount of Loan \$243,311

Description of the Project:

Surfnet’s Las Cumbres Project will provide high-speed fiber to the home (FTTH) in an underserved area of Santa Cruz County near Skyline Blvd and Las Cumbres Road. The homeowners in this community are served by a common Home Owners Association (HOA) known as the Las Cumbres Conservation Corporation (LCCC). The Board of LCCC has voted and approved a Memorandum of Understanding (MOU) that endorses Surfnet as their provider for this project and agrees to share in the matching fund costs. Additionally, individual letters of support have been received from 77% of the homeowners and these are attached in Section 15.

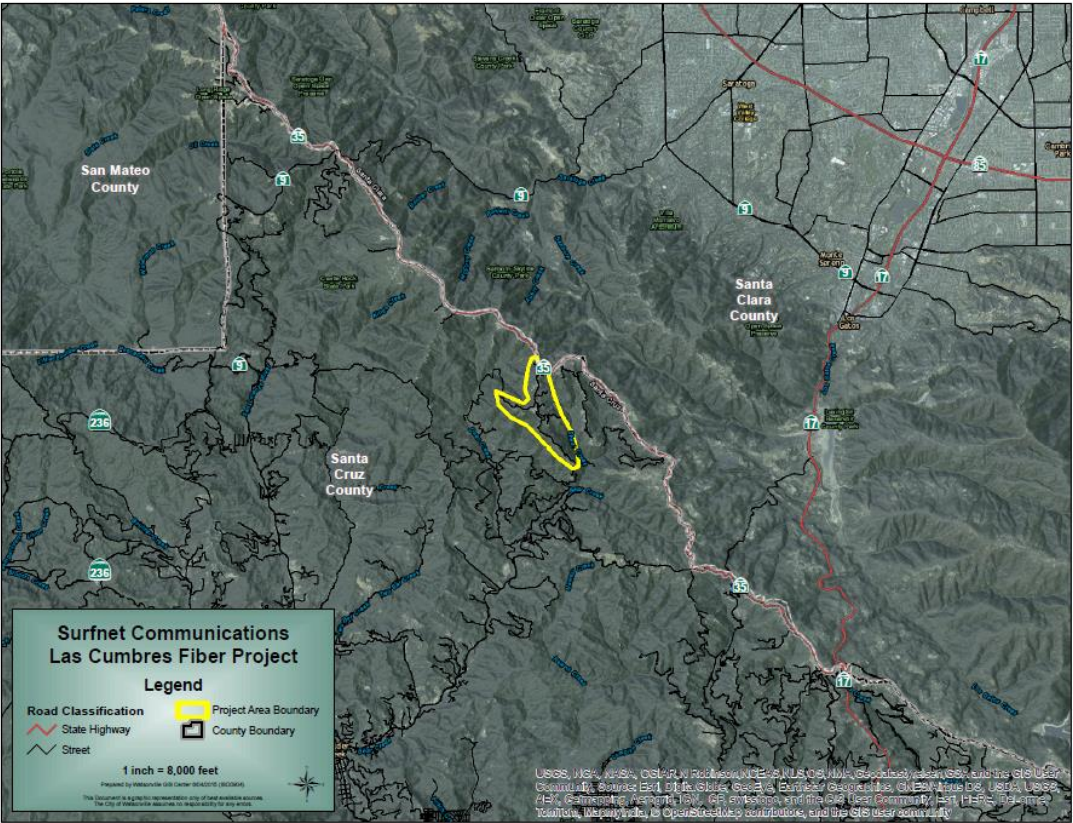


Figure 1: Map of Surfnet’s Las Cumbres Fiber Project Location

The project is located in a remote area in the Santa Cruz Mountains above Los Gatos. This has traditionally been an underserved area due to the difficulty of the terrain and the excessively high cost of providing wireline services.



Figure 2: Map of Project with Route Detail

This map shows the extent of the fiber being placed as well as the site of the microwave backhaul. The wireless backhaul site has connectivity to any of the Tier 1 data centers in the South Bay Area. This site is on common property owned and managed by the HOA. Fiber will be placed throughout the entire neighborhood along the (already disturbed) shoulders of the HOA owned roadways. It is estimated to be approximately 5.1 miles in length.

This map shows the Census Blocks that will be served as a result of this project.

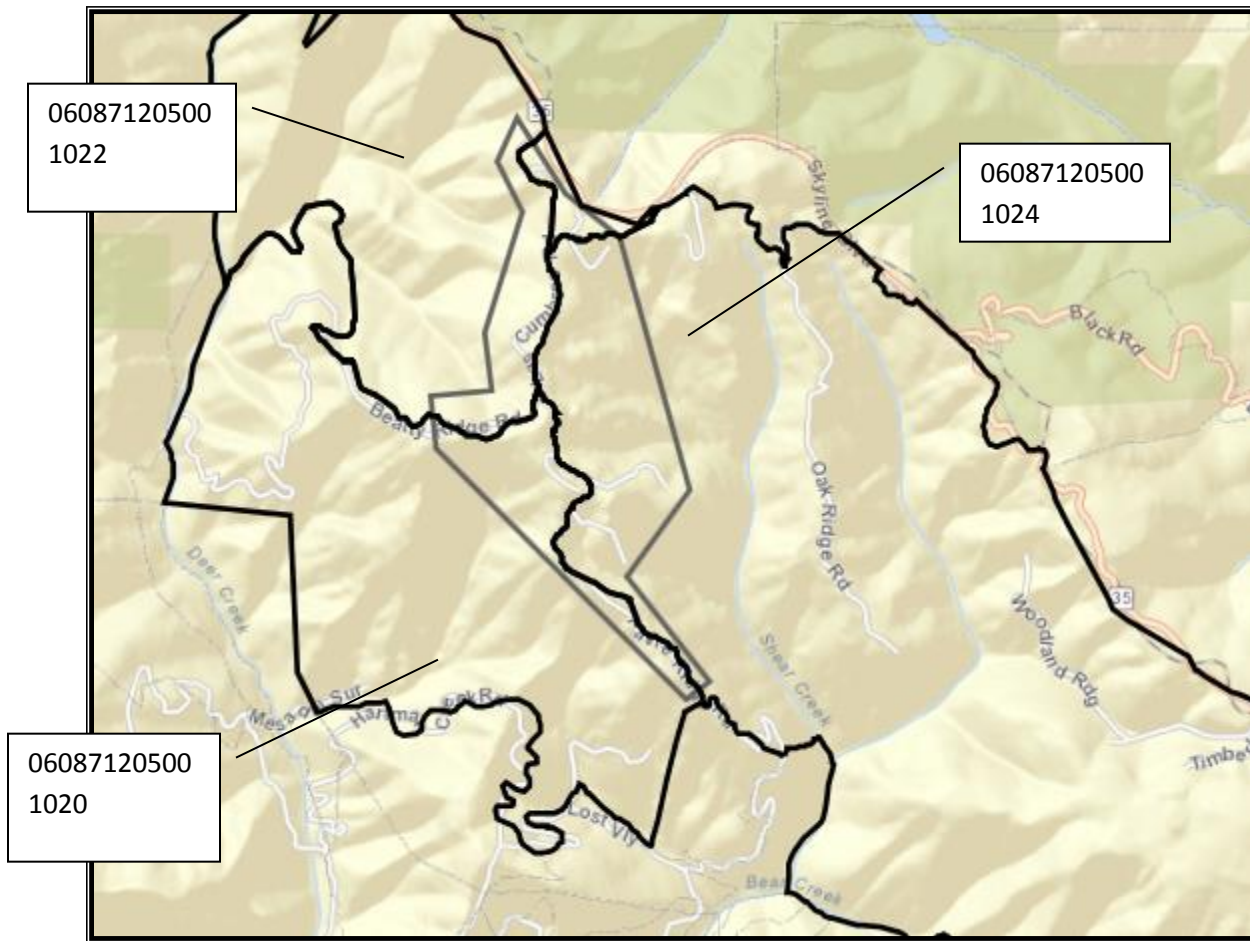


Figure 3: Map of the Proposed Project with Census Blocks

List of Census Block Groups:

All census block identified above are in the following Census Block Group:
060871205001

List of ZIP codes:

95033